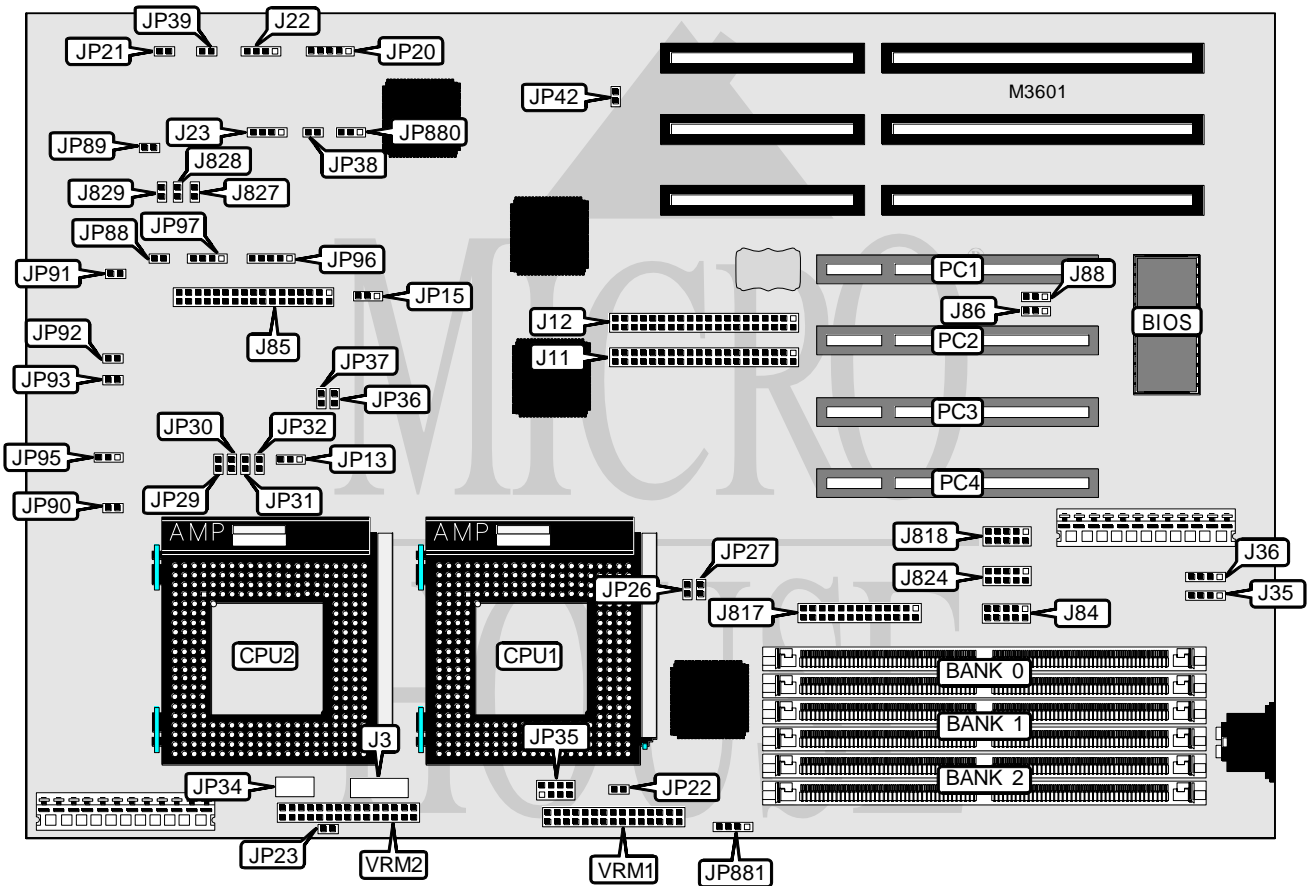


SUPER MICRO P 6 D N E

Processor	Pentium Pro
Processor Speed	150/166/180/200MHz
Chip Set	Intel
Video Chip Set	None
Maximum Onboard Memory	768MB (BEDO/EDO supported)
Maximum Video Memory	None
Cache	256/512KB (on Pentium Pro CPU)
BIOS	AMI
Dimensions	335mm x 223mm
I/O Options	32-bit PCI slots (4), floppy drive interface, green PC connector, IDE interfaces (2), parallel port, PS/2 mouse interface, serial ports (2), IR connector, VRM connectors (2), USB connectors (2)
NPU Options	None



Continued on next page . . .

SUPER MICRO

P 6 D N E

... continued from previous page

CONNECTIONS			
Purpose	Location	Purpose	Location
IDE interface 1	J11	Reset switch	JP21
IDE interface 2	J12	Green PC connector	JP39
Speaker	J22	Buzzer connector	JP89
IDE interface LED	J23	Chassis fan power	JP91
USB connector 1	J35	Chassis fan power	JP92
USB connector 2	J36	Chassis fan power	JP93
PS/2 mouse interface	J84	IR connector	JP96
Floppy drive interface	J85	External battery	JP881
Parallel port	J817	32-bit PCI slots	PC1 - PC4
Serial port 1	J818	VRM connector 1	VRM1
Serial port 2	J824	VRM connector 2	VRM2
Power LED & keylock	JP20		

USER CONFIGURABLE SETTINGS		
Function	Label	Position
í Factory configured - do not alter	J3	Unidentified
í Factory configured - do not alter	J86	Pins 1 & 2 closed
í Factory configured - do not alter	J88	Pins 1 & 2 closed
í Factory configured - do not alter	J827	Unidentified
í Factory configured - do not alter	J828	Unidentified
í Factory configured - do not alter	J829	Unidentified
í Factory configured - do not alter	JP13	Pins 2 & 3 closed
í Factory configured - do not alter	JP15	Pins 2 & 3 closed
í Factory configured - do not alter	JP22	Open
í Factory configured - do not alter	JP23	Open
í Factory configured - do not alter	JP26	Open
í Factory configured - do not alter	JP27	Closed
í Factory configured - do not alter	JP34	Unidentified
í Factory configured - do not alter	JP35	Unidentified
í Factory configured - do not alter	JP38	Open
í ISA CLK = PCI CLK/4	JP42	Closed
ISA CLK = PCI CLK/3	JP42	Open
í Factory configured - do not alter	JP88	Open
í Factory configured - do not alter	JP90	Unidentified
í Factory configured - do not alter	JP95	Open
í Factory configured - do not alter	JP97	Unidentified
í CMOS memory normal operation	JP880	Pins 1 & 2 closed
CMOS memory clear	JP880	Pins 2 & 3 closed

Continued on next page...

SUPER MICRO P 6 D N E

... continued from previous page

DRAM CONFIGURATION			
Size	Bank 0	Bank 1	Bank 2
8MB	(2) 1M x 36	None	None
16MB	(2) 1M x 36	(2) 1M x 36	None
16MB	(2) 2M x 36	None	None
24MB	(2) 2M x 36	(2) 1M x 36	None
24MB	(2) 1M x 36	(2) 1M x 36	(2) 1M x 36
32MB	(2) 4M x 36	None	None
32MB	(2) 2M x 36	(2) 2M x 36	None
40MB	(2) 4M x 36	(2) 1M x 36	None
48MB	(2) 4M x 36	(2) 2M x 36	None
48MB	(2) 4M x 36	(2) 1M x 36	(2) 1M x 36
56MB	(2) 4M x 36	(2) 2M x 36	(2) 1M x 36
64MB	(2) 8M x 36	None	None
64MB	(2) 4M x 36	(2) 4M x 36	None
80MB	(2) 8M x 36	(2) 2M x 36	None
80MB	(2) 8M x 36	(2) 1M x 36	(2) 1M x 36
88MB	(2) 8M x 36	(2) 2M x 36	(2) 1M x 36
96MB	(2) 8M x 36	(2) 4M x 36	None
96MB	(2) 4M x 36	(2) 4M x 36	(2) 4M x 36
96MB	(2) 8M x 36	(2) 2M x 36	(2) 2M x 36
104MB	(2) 8M x 36	(2) 4M x 36	(2) 1M x 36
112MB	(2) 8M x 36	(2) 4M x 36	(2) 2M x 36
128MB	(2) 8M x 36	(2) 4M x 36	(2) 4M x 36
128MB	(2) 16M x 36	None	None
128MB	(2) 8M x 36	(2) 8M x 36	None
136MB	(2) 8M x 36	(2) 8M x 36	(2) 1M x 36
136MB	(2) 16M x 36	(2) 1M x 36	None
144MB	(2) 16M x 36	(2) 2M x 36	None
144MB	(2) 16M x 36	(2) 1M x 36	(2) 1M x 36
152MB	(2) 16M x 36	(2) 2M x 36	(2) 1M x 36
160MB	(2) 16M x 36	(2) 4M x 36	None
160MB	(2) 16M x 36	(2) 2M x 36	(2) 2M x 36
168MB	(2) 16M x 36	(2) 4M x 36	(2) 1M x 36
176MB	(2) 16M x 36	(2) 4M x 36	(2) 2M x 36
192MB	(2) 16M x 36	(2) 8M x 36	None
192MB	(2) 16M x 36	(2) 4M x 36	(2) 4M x 36
200MB	(2) 16M x 36	(2) 8M x 36	(2) 1M x 36
208MB	(2) 16M x 36	(2) 8M x 36	(2) 2M x 36
224MB	(2) 16M x 36	(2) 8M x 36	(2) 4M x 36
256MB	(2) 32M x 36	None	None
256MB	(2) 16M x 36	(2) 16M x 36	None
256MB	(2) 16M x 36	(2) 8M x 36	(2) 8M x 36
264MB	(2) 32M x 36	(2) 1M x 36	None
264MB	(2) 16M x 36	(2) 16M x 36	(2) 1M x 36

Continued on next page...

SUPER MICRO P 6 D N E

... continued from previous page

DRAM CONFIGURATION (CON'T)			
Size	Bank 0	Bank 1	Bank 2
272MB	(2) 32M x 36	(2) 1M x 36	(2) 1M x 36
272MB	(2) 32M x 36	(2) 2M x 36	None
272MB	(2) 16M x 36	(2) 16M x 36	(2) 2M x 36
288MB	(2) 32M x 36	(2) 2M x 36	(2) 2M x 36
288MB	(2) 32M x 36	(2) 4M x 36	None
288MB	(2) 16M x 36	(2) 16M x 36	(2) 4M x 36
320MB	(2) 32M x 36	(2) 4M x 36	(2) 4M x 36
320MB	(2) 32M x 36	(2) 8M x 36	None
320MB	(2) 16M x 36	(2) 16M x 36	(2) 8M x 36
384MB	(2) 32M x 36	(2) 8M x 36	(2) 8M x 36
384MB	(2) 32M x 36	(2) 16M x 36	None
384MB	(2) 16M x 36	(2) 16M x 36	(2) 16M x 36
512MB	(2) 32M x 36	(2) 32M x 36	None
512MB	(2) 32M x 36	(2) 16M x 36	(2) 16M x 36
768MB	(2) 32M x 36	(2) 32M x 36	(2) 32M x 36

Note: Board accepts BEDO/EDO memory. Board also accepts x 32 SIMMs.

CACHE CONFIGURATION
Note: 256KB/512KB cache is located on the Pentium Pro CPU.

CPU SPEED SELECTION						
Speed	JP29	JP30	JP31	JP32	JP36	JP37
150MHz	Open	Closed	Closed	Closed	Closed	Open
166MHz	Open	Closed	Closed	Closed	Open	Closed
180MHz	Closed	Open	Closed	Closed	Closed	Open
200MHz	Closed	Open	Closed	Closed	Open	Closed

THERMAL CONTROL SELECTION		
Turn on temperature	Turn off temperature	JP95
55	37	Pins 1 & 2 closed
64	50	Pins 2 & 3 closed
72	43	Open

Note: Temperature is in Celsius.