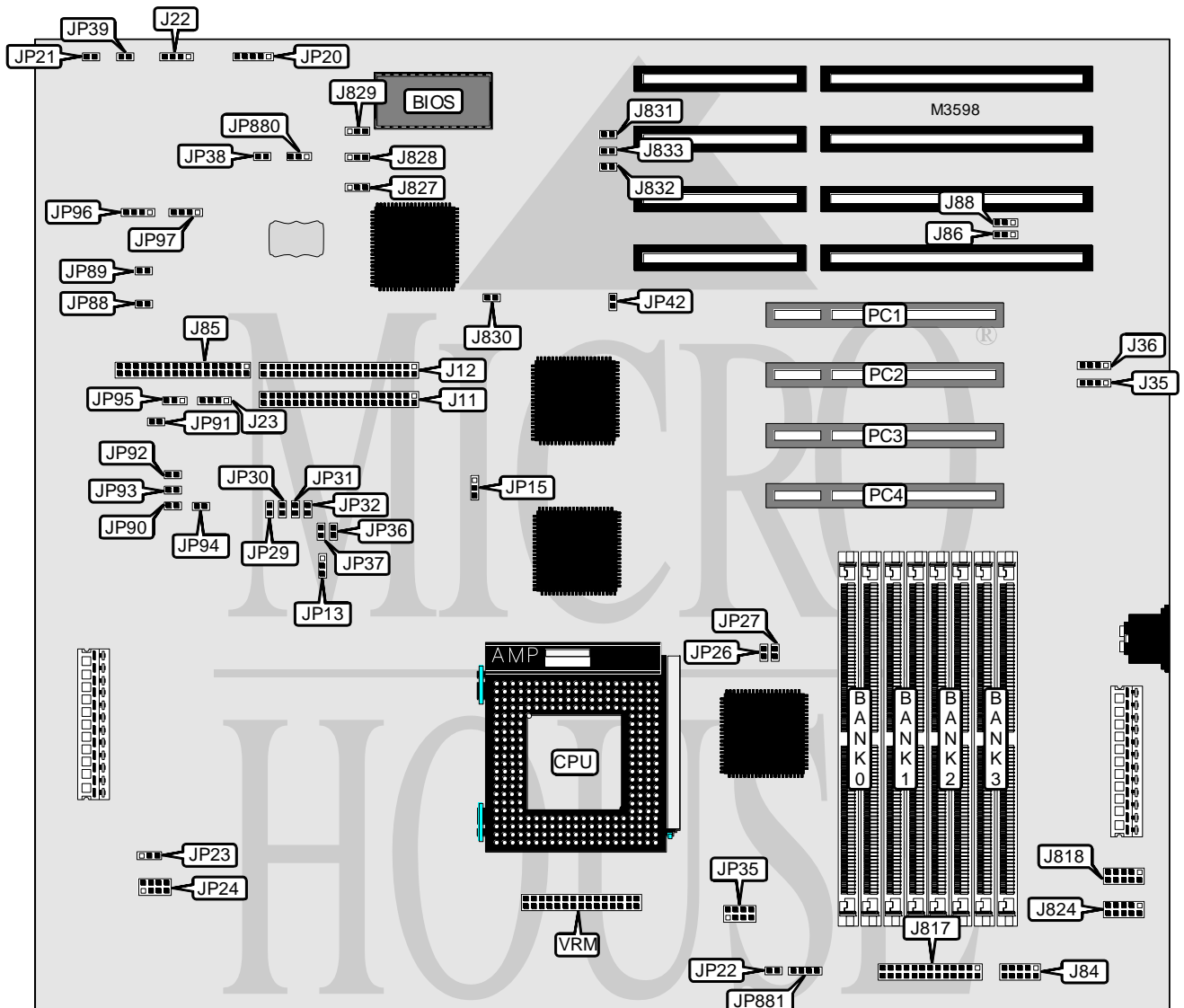


SUPER MICRO P 6 S N F

Processor	Pentium Pro
Processor Speed	150/166/180/200MHz
Chip Set	Intel
Video Chip Set	None
Maximum Onboard Memory	1GB (BEDO/EDO supported)
Maximum Video Memory	None
Cache	256/512KB (on Pentium Pro CPU)
BIOS	AMI
Dimensions	351mm x 305mm
I/O Options	32-bit PCI slots (4), floppy drive interface, green PC connector, IDE interfaces (2), parallel port, PS/2 mouse interface, serial ports (2), IR connector, VRM connector, USB connectors (2)
NPU Options	None



Continued on next page. . .

SUPER MICRO

P 6 S N F

... continued from previous page

CONNECTIONS			
Purpose	Location	Purpose	Location
IDE interface 1	J11	Power LED & keylock	JP20
IDE interface 2	J12	Reset switch	JP21
Speaker	J22	Green PC connector	JP39
IDE interface LED	J23	Buzzer connector	JP89
USB connector	J35	Chassis fan power	JP91
USB connector	J36	Chassis fan power	JP92
PS/2 mouse interface	J84	Chassis fan power	JP93
Floppy drive interface	J85	IR connector	JP96
Parallel port	J817	External battery	JP881
Serial port 1	J818	32-bit PCI slots	PC1 - PC4
Serial port 2	J824	VRM connector	VRM

USER CONFIGURABLE SETTINGS		
Function	Label	Position
í Factory configured - do not alter	J86	Pins 1 & 2 closed
í Factory configured - do not alter	J88	Pins 1 & 2 closed
í Factory configured - do not alter	J827	Pins 1 & 2 closed
í Factory configured - do not alter	J828	Pins 1 & 2 closed
í Factory configured - do not alter	J829	Pins 1 & 2 closed
í Factory configured - do not alter	J830	Unidentified
í Factory configured - do not alter	J831	Unidentified
í Factory configured - do not alter	J832	Unidentified
í Factory configured - do not alter	J833	Unidentified
í Factory configured - do not alter	JP13	Pins 2 & 3 closed
í Factory configured - do not alter	JP15	Pins 2 & 3 closed
í Factory configured - do not alter	JP22	Unidentified
í Factory configured - do not alter	JP23	Unidentified
í Factory configured - do not alter	JP24	Unidentified
í Factory configured - do not alter	JP26	Open
í Factory configured - do not alter	JP27	Closed
í Factory configured - do not alter	JP35	Unidentified
í Factory configured - do not alter	JP38	Open
ISA CLK = PCI CLK/4	JP42	Closed
ISA CLK = PCI CLK/3	JP42	Open
í Factory configured - do not alter	JP88	Open
í Factory configured - do not alter	JP90	Open
í Factory configured - do not alter	JP94	Open
í Factory configured - do not alter	JP97	Unidentified
í CMOS memory normal operation	JP880	Pins 1 & 2 closed
CMOS memory clear	JP880	Pins 2 & 3 closed

Continued on next page...

**SUPER MICRO
P 6 S N F**

... continued from previous page

DRAM CONFIGURATION				
Size	Bank 0	Bank 1	Bank 2	Bank 3
8MB	(2) 1M x 36	None	None	None
16MB	(2) 1M x 36	(2) 1M x 36	None	None
16MB	(2) 2M x 36	None	None	None
32MB	(2) 1M x 36	(2) 1M x 36	(2) 1M x 36	(2) 1M x 36
32MB	(2) 2M x 36	(2) 2M x 36	None	None
32MB	(2) 4M x 36	None	None	None
48MB	(2) 1M x 36	(2) 1M x 36	(2) 2M x 36	(2) 2M x 36
48MB	(2) 2M x 36	(2) 2M x 36	(2) 1M x 36	(2) 1M x 36
64MB	(2) 2M x 36	(2) 2M x 36	(2) 2M x 36	(2) 2M x 36
64MB	(2) 4M x 36	(2) 4M x 36	None	None
64MB	(2) 8M x 36	None	None	None
80MB	(2) 1M x 36	(2) 1M x 36	(2) 4M x 36	(2) 4M x 36
80MB	(2) 4M x 36	(2) 4M x 36	(2) 1M x 36	(2) 1M x 36
96MB	(2) 2M x 36	(2) 2M x 36	(2) 4M x 36	(2) 4M x 36
96MB	(2) 4M x 36	(2) 4M x 36	(2) 2M x 36	(2) 2M x 36
128MB	(2) 4M x 36	(2) 4M x 36	(2) 4M x 36	(2) 4M x 36
128MB	(2) 8M x 36	(2) 8M x 36	None	None
128MB	(2) 16M x 36	None	None	None
144MB	(2) 1M x 36	(2) 1M x 36	(2) 8M x 36	(2) 8M x 36
144MB	(2) 8M x 36	(2) 8M x 36	(2) 1M x 36	(2) 1M x 36
160MB	(2) 2M x 36	(2) 2M x 36	(2) 8M x 36	(2) 8M x 36
160MB	(2) 8M x 36	(2) 8M x 36	(2) 2M x 36	(2) 2M x 36
192MB	(2) 4M x 36	(2) 4M x 36	(2) 8M x 36	(2) 8M x 36
192MB	(2) 8M x 36	(2) 8M x 36	(2) 4M x 36	(2) 4M x 36
256MB	(2) 8M x 36	(2) 8M x 36	(2) 8M x 36	(2) 8M x 36
256MB	(2) 16M x 36	(2) 16M x 36	None	None
256MB	(2) 32M x 36	None	None	None
272MB	(2) 1M x 36	(2) 1M x 36	(2) 16M x 36	(2) 16M x 36
272MB	(2) 16M x 36	(2) 16M x 36	(2) 1M x 36	(2) 1M x 36
288MB	(2) 2M x 36	(2) 2M x 36	(2) 16M x 36	(2) 16M x 36
288MB	(2) 16M x 36	(2) 16M x 36	(2) 2M x 36	(2) 2M x 36
320MB	(2) 4M x 36	(2) 4M x 36	(2) 16M x 36	(2) 16M x 36
320MB	(2) 16M x 36	(2) 16M x 36	(2) 4M x 36	(2) 4M x 36
384MB	(2) 8M x 36	(2) 8M x 36	(2) 16M x 36	(2) 16M x 36
384MB	(2) 16M x 36	(2) 16M x 36	(2) 8M x 36	(2) 8M x 36
512MB	(2) 16M x 36	(2) 16M x 36	(2) 16M x 36	(2) 16M x 36
512MB	(2) 32M x 36	(2) 32M x 36	None	None
528MB	(2) 1M x 36	(2) 1M x 36	(2) 32M x 36	(2) 32M x 36
528MB	(2) 32M x 36	(2) 32M x 36	(2) 1M x 36	(2) 1M x 36
544MB	(2) 2M x 36	(2) 2M x 36	(2) 32M x 36	(2) 32M x 36
544MB	(2) 32M x 36	(2) 32M x 36	(2) 2M x 36	(2) 2M x 36

Continued on next page...

SUPER MICRO P6SNF

... continued from previous page

DRAM CONFIGURATION (CON'T)				
Size	Bank 0	Bank 1	Bank 2	Bank 3
576MB	(2) 4M x 36	(2) 4M x 36	(2) 32M x 36	(2) 32M x 36
576MB	(2) 32M x 36	(2) 32M x 36	(2) 4M x 36	(2) 4M x 36
640MB	(2) 8M x 36	(2) 8M x 36	(2) 32M x 36	(2) 32M x 36
640MB	(2) 32M x 36	(2) 32M x 36	(2) 8M x 36	(2) 8M x 36
768MB	(2) 16M x 36	(2) 16M x 36	(2) 32M x 36	(2) 32M x 36
768MB	(2) 32M x 36	(2) 32M x 36	(2) 16M x 36	(2) 16M x 36
1GB	(2) 32M x 36	(2) 32M x 36	(2) 32M x 36	(2) 32M x 36

Note: Board accepts BEDO/EDO memory. Board also accepts x 32 SIMMs.

CACHE CONFIGURATION
Note: 256KB/512KB cache is located on the Pentium Pro CPU.

CPU SPEED SELECTION						
Speed	JP29	JP30	JP31	JP32	JP36	JP37
150MHz	Open	Closed	Closed	Closed	Closed	Open
166MHz	Open	Closed	Closed	Closed	Open	Closed
180MHz	Closed	Open	Closed	Closed	Closed	Open
200MHz	Closed	Open	Closed	Closed	Open	Closed

THERMAL CONTROL SELECTION		
Turn on temperature	Turn off temperature	JP95
55	51	Pins 1 & 2 closed
62	58	Pins 2 & 3 closed
69	65	Open

Note: Temperature is in Celsius.