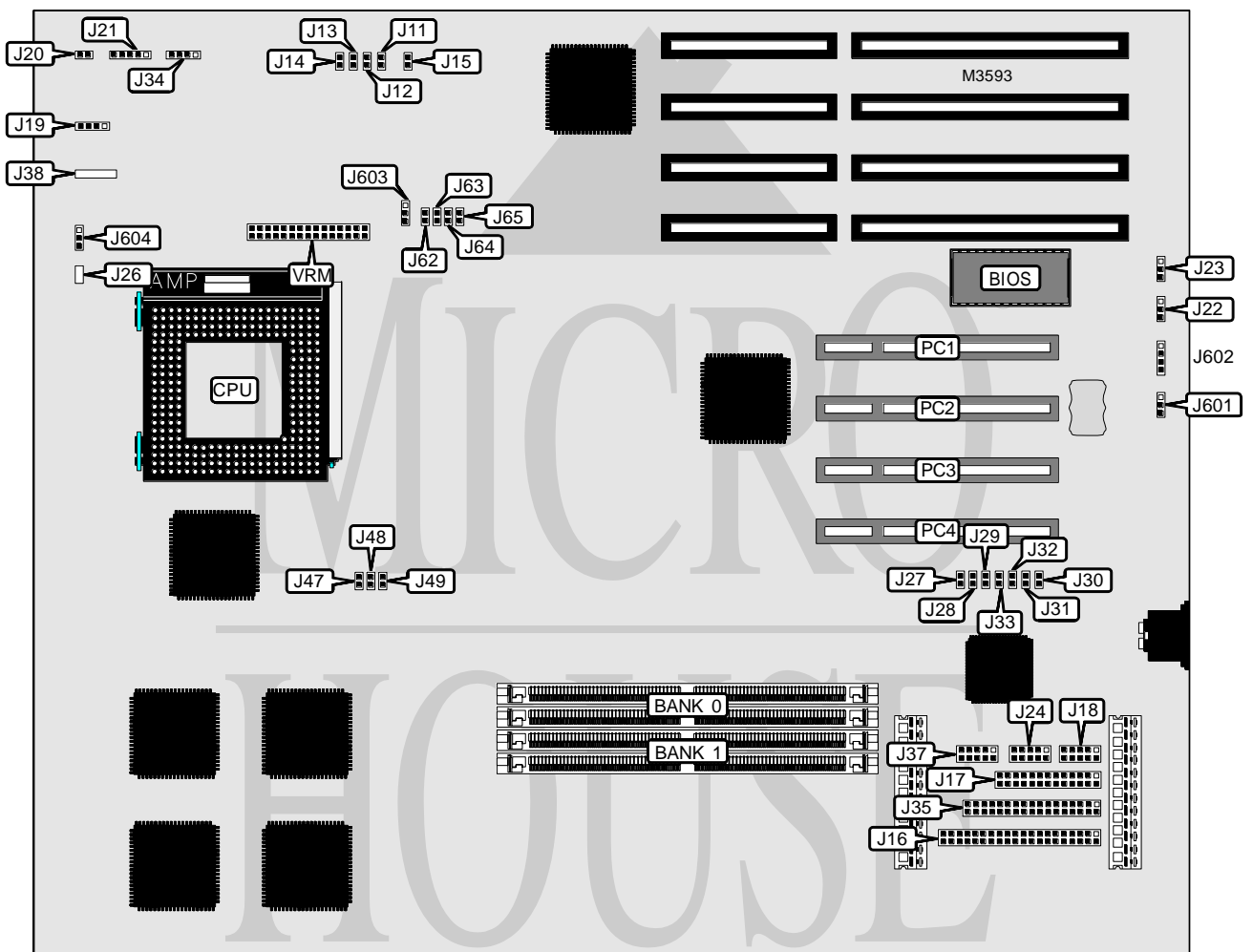


SUPER MICRO P6SOF

Processor	Pentium Pro
Processor Speed	133/150/166/180/200MHz
Chip Set	Intel
Video Chip Set	None
Maximum Onboard Memory	256MB
Maximum Video Memory	None
Cache	256/512KB (on Pentium Pro CPU)
BIOS	AMI
Dimensions	351mm x 305mm
I/O Options	32-bit PCI slots (4), floppy drive interface, IDE interface, parallel port, PS/2 mouse interface, serial ports (2), VRM connector
NPU Options	None



Continued on next page . . .

SUPER MICRO

P 6 S O F

... continued from previous page

CONNECTIONS			
Purpose	Location	Purpose	Location
IDE interface	J16	Speaker	J34
Parallel port	J17	Floppy drive interface	J35
Serial port 1	J18	PS/2 mouse interface	J37
IDE interface LED	J19	External battery	J602
Reset switch	J20	Chassis fan power	J603
Power LED & keylock	J21	Chassis fan power	J604
Serial port 2	J24	32-bit PCI slots	PC1 - PC4
PW LED	J26	VRM connector	VRM

USER CONFIGURABLE SETTINGS		
Function	Label	Position
í Factory configured - do not alter	J11	Open
í Factory configured - do not alter	J12	Open
í Factory configured - do not alter	J13	Open
í Factory configured - do not alter	J14	Open
í Factory configured - do not alter	J15	Open
í Factory configured - do not alter	J22	Pins 1 & 2 closed
í Factory configured - do not alter	J23	Pins 2 & 3 closed
í Factory configured - do not alter	J27	Open
í Factory configured - do not alter	J28	Closed
í Factory configured - do not alter	J29	Closed
í Factory configured - do not alter	J30	Open
í Factory configured - do not alter	J31	Open
í Factory configured - do not alter	J32	Open
í Factory configured - do not alter	J33	Open
í Factory configured - do not alter	J38	Unidentified
í CMOS memory normal operation	J601	Pins 1 & 2 closed
CMOS memory clear	J601	Pins 2 & 3 closed

DRAM CONFIGURATION		
Size	Bank 0	Bank 1
8MB	(2) 1M x 36	None
16MB	(2) 2M x 36	None
16MB	(2) 1M x 36	(2) 1M x 36
32MB	(2) 4M x 36	None
32MB	(2) 2M x 36	(2) 2M x 36
64MB	(2) 8M x 36	None
64MB	(2) 4M x 36	(2) 4M x 36
128MB	(2) 16M x 36	None
128MB	(2) 8M x 36	(2) 8M x 36
256MB	(2) 16M x 36	(2) 16M x 36

Continued on next page...

SUPER MICRO

P 6 S O F

... continued from previous page

CACHE CONFIGURATION

Note: 256KB/512KB cache is located on the Pentium Pro CPU.

CPU SPEED SELECTION

Speed	J47	J48	J49	J62	J63	J64	J65
133MHz	Open	Closed	Open	Closed	Closed	Closed	Closed
150MHz	Closed	Open	Closed	Closed	Closed	Closed	Open
166MHz	Open	Closed	Open	Closed	Closed	Closed	Open
180MHz	Closed	Open	Closed	Closed	Open	Closed	Closed
200MHz	Open	Closed	Open	Closed	Open	Closed	Closed