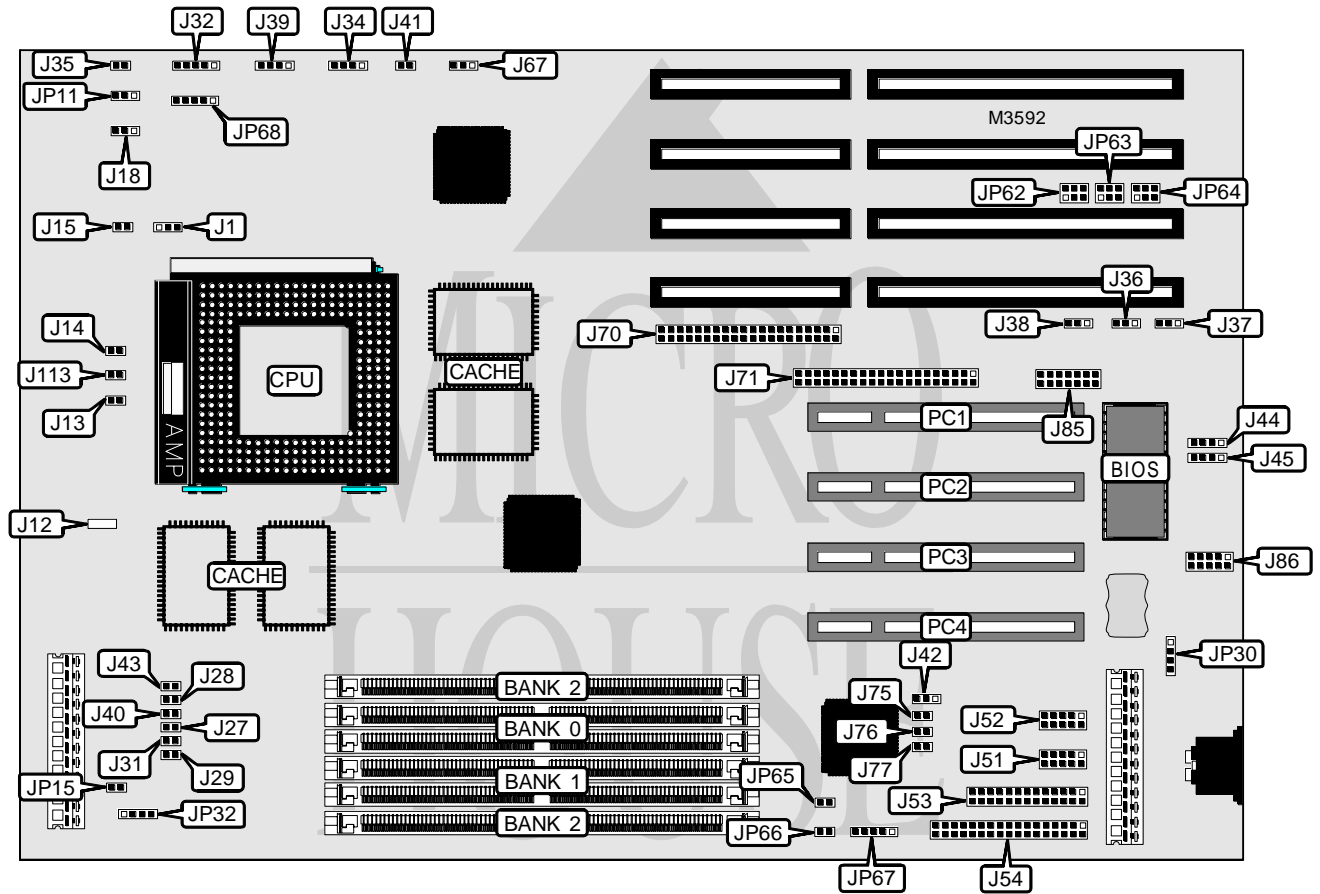


SUPER MICRO P5STE

Processor	Pentium
Processor Speed	75/90/100/120/133/150/166/180/200MHz
Chip Set	Intel
Video Chip Set	None
Maximum Onboard Memory	768MB (EDO supported)
Maximum Video Memory	None
Cache	256/512KB
BIOS	Award
Dimensions	330mm x 218mm
I/O Options	32-bit PCI slots (4), floppy drive interface, IDE interfaces (2), parallel port, PS/2 mouse interface, serial ports (2), IR connector, USB connectors (2)
NPU Options	None



Continued on next page...

SUPER MICRO P5STE

... continued from previous page

CONNECTIONS			
Purpose	Location	Purpose	Location
Buzzer connector	J13	Parallel port	J53
Chassis fan power	J14	Floppy drive interface	J54
Overheat LED	J15	IDE interface 1	J70
Chassis fan power	J18	IDE interface 2	J71
Power LED & keylock	J32	Legacy connector	J85
IDE interface LED	J34	PS/2 mouse interface	J86
Reset switch	J35	External battery	JP30
Speaker	J39	Turbo LED	JP32
USB connector	J44	IR connector	JP67
USB connector	J45	IR connector	JP68
Serial port 2	J51	32-bit PCI slots	PC1 - PC4
Serial port 1	J52		

USER CONFIGURABLE SETTINGS		
Function	Label	Position
í Factory configured - do not alter	J12	Unidentified
í Factory configured - do not alter	J15	Unidentified
í Factory configured - do not alter	J28	Closed
í Factory configured - do not alter	J36	Unidentified
í Factory configured - do not alter	J37	Pins 1 & 2 closed
í Factory configured - do not alter	J38	Unidentified
í Factory configured - do not alter	J41	Open
í CMOS memory normal operation	J42	Pins 1 & 2 closed
CMOS memory clear	J42	Pins 2 & 3 closed
í Factory configured - do not alter	J43	Open
í ISA CLK = PCI CLK/4	J67	Pins 2 & 3 closed
ISA CLK = PCI CLK/3	J67	Pins 1 & 2 closed
í Factory configured - do not alter	J75	Unidentified
í Factory configured - do not alter	J76	Unidentified
í Factory configured - do not alter	J77	Unidentified
í Factory configured - do not alter	J113	Unidentified
í Factory configured - do not alter	JP15	Unidentified
í Factory configured - do not alter	JP62	Unidentified
í Factory configured - do not alter	JP63	Unidentified
í Factory configured - do not alter	JP64	Unidentified
í Factory configured - do not alter	JP65	Unidentified
í Factory configured - do not alter	JP66	Unidentified

Continued on next page...

SUPER MICRO P5STE

... continued from previous page

DRAM CONFIGURATION			
Size	Bank 0	Bank 1	Bank 2
16MB	(2) 1M x 36	(2) 1M x 36	None
16MB	(2) 2M x 36	None	None
24MB	(2) 2M x 36	(2) 1M x 36	None
24MB	(2) 1M x 36	(2) 1M x 36	(2) 1M x 36
32MB	(2) 4M x 36	None	None
32MB	(2) 2M x 36	(2) 2M x 36	None
40MB	(2) 4M x 36	(2) 1M x 36	None
48MB	(2) 4M x 36	(2) 2M x 36	None
48MB	(2) 4M x 36	(2) 1M x 36	(2) 1M x 36
56MB	(2) 4M x 36	(2) 2M x 36	(2) 1M x 36
64MB	(2) 8M x 36	None	None
64MB	(2) 4M x 36	(2) 4M x 36	None
80MB	(2) 8M x 36	(2) 2M x 36	None
80MB	(2) 8M x 36	(2) 1M x 36	(2) 1M x 36
88MB	(2) 8M x 36	(2) 2M x 36	(2) 1M x 36
96MB	(2) 8M x 36	(2) 4M x 36	None
96MB	(2) 4M x 36	(2) 4M x 36	(2) 4M x 36
96MB	(2) 8M x 36	(2) 2M x 36	(2) 2M x 36
104MB	(2) 8M x 36	(2) 4M x 36	(2) 1M x 36
112MB	(2) 8M x 36	(2) 4M x 36	(2) 2M x 36
128MB	(2) 8M x 36	(2) 4M x 36	(2) 4M x 36
128MB	(2) 16M x 36	None	None
128MB	(2) 8M x 36	(2) 8M x 36	None
136MB	(2) 8M x 36	(2) 8M x 36	(2) 1M x 36
136MB	(2) 16M x 36	(2) 1M x 36	None
144MB	(2) 16M x 36	(2) 2M x 36	None
144MB	(2) 16M x 36	(2) 1M x 36	(2) 1M x 36
152MB	(2) 16M x 36	(2) 2M x 36	(2) 1M x 36
160MB	(2) 16M x 36	(2) 4M x 36	None
160MB	(2) 16M x 36	(2) 2M x 36	(2) 2M x 36
168MB	(2) 16M x 36	(2) 4M x 36	(2) 1M x 36
176MB	(2) 16M x 36	(2) 4M x 36	(2) 2M x 36
192MB	(2) 16M x 36	(2) 8M x 36	None
192MB	(2) 16M x 36	(2) 4M x 36	(2) 4M x 36
200MB	(2) 16M x 36	(2) 8M x 36	(2) 1M x 36
208MB	(2) 16M x 36	(2) 8M x 36	(2) 2M x 36
224MB	(2) 16M x 36	(2) 8M x 36	(2) 4M x 36
256MB	(2) 32M x 36	None	None
256MB	(2) 16M x 36	(2) 16M x 36	None
256MB	(2) 16M x 36	(2) 8M x 36	(2) 8M x 36
264MB	(2) 32M x 36	(2) 1M x 36	None
264MB	(2) 16M x 36	(2) 16M x 36	(2) 1M x 36

Continued on next page...

SUPER MICRO P5STE

... continued from previous page

DRAM CONFIGURATION (CON'T)			
Size	Bank 0	Bank 1	Bank 2
272MB	(2) 32M x 36	(2) 1M x 36	(2) 1M x 36
272MB	(2) 32M x 36	(2) 2M x 36	None
272MB	(2) 16M x 36	(2) 16M x 36	(2) 2M x 36
288MB	(2) 32M x 36	(2) 2M x 36	(2) 2M x 36
288MB	(2) 32M x 36	(2) 4M x 36	None
288MB	(2) 16M x 36	(2) 16M x 36	(2) 4M x 36
320MB	(2) 32M x 36	(2) 4M x 36	(2) 4M x 36
320MB	(2) 32M x 36	(2) 8M x 36	None
320MB	(2) 16M x 36	(2) 16M x 36	(2) 8M x 36
384MB	(2) 32M x 36	(2) 8M x 36	(2) 8M x 36
384MB	(2) 32M x 36	(2) 16M x 36	None
384MB	(2) 16M x 36	(2) 16M x 36	(2) 16M x 36
512MB	(2) 32M x 36	(2) 32M x 36	None
512MB	(2) 32M x 36	(2) 16M x 36	(2) 16M x 36
768MB	(2) 32M x 36	(2) 32M x 36	(2) 32M x 36

Note: Board accepts EDO memory. Board also accepts x 32 SIMMs.

CACHE CONFIGURATION
Note: Either 256KB or 512KB cache will be installed at the factory.

CPU SPEED SELECTION						
CPU speed	Clock speed	Multiplier	J27	J29	J31	J40
75MHz	50MHz	1.5x	Open	Closed	Closed	Open
90MHz	60MHz	1.5x	Open	Closed	Open	Open
100MHz	66MHz	1.5x	Open	Open	Closed	Open
120MHz	60MHz	2x	Closed	Closed	Open	Open
133MHz	66MHz	2x	Closed	Open	Closed	Open
150MHz	60MHz	2.5x	Closed	Closed	Open	Closed
166MHz	66MHz	2.5x	Closed	Open	Closed	Closed
180MHz	60MHz	3x	Open	Closed	Open	Closed
200MHz	66MHz	3x	Open	Open	Closed	Closed

CPU VOLTAGE SELECTION	
Voltage	JP11
2.5v	Pins 2 & 3 closed
2.9v	Open
3.3v	Pins 1 & 2 closed

THERMAL CONTROL SELECTION		
Turn on temperature	Turn off temperature	J1
57	51	Pins 1 & 2 closed
62	58	Pins 2 & 3 closed
69	65	Open

Note: Temperature is in Celsius.

