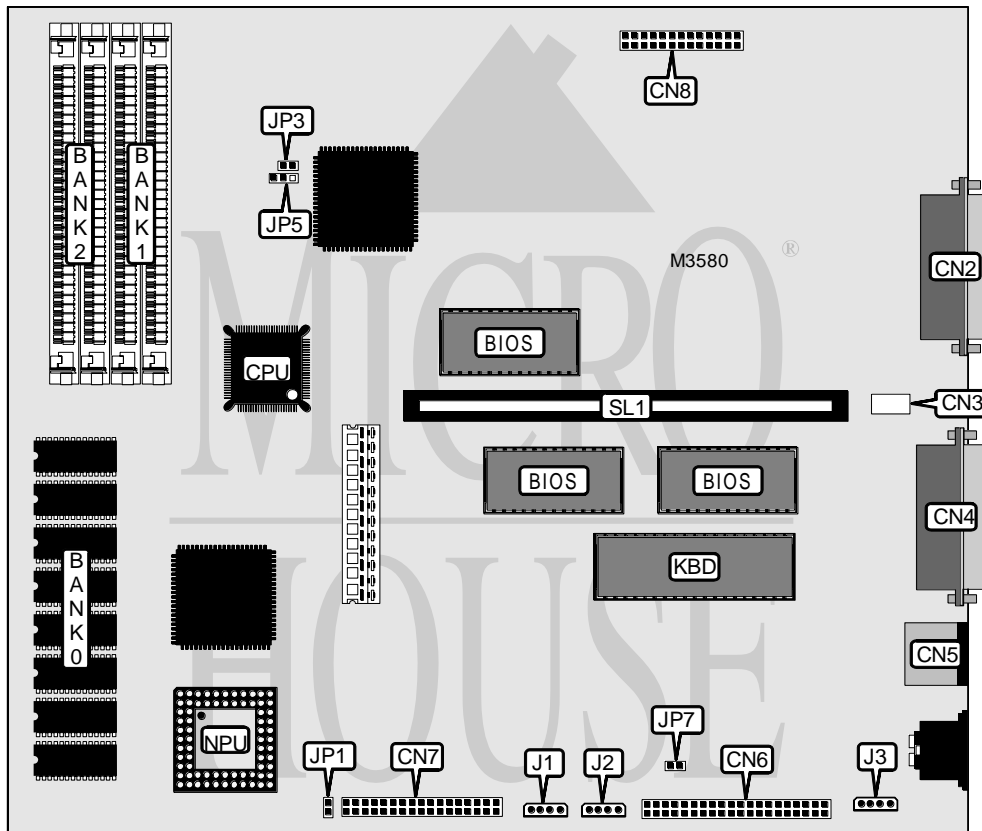


IBM CORPORATION
EDUQUEST 9603 (MODELS 010/01X)
EDUQUEST 9603 (MODELS 040/04X)

Processor	80386SX
Processor Speed	25MHz
Chip Set	Unidentified
Video Chip Set	Unidentified
Maximum Onboard Memory	16MB
Maximum Video Memory	512KB
Cache	None
BIOS	Unidentified
Dimensions	254mm x 218mm
I/O Options	Floppy drive interface, IDE interface, parallel port, PS/2 mouse port, serial port, feature connector, video connector, riser slot
NPU Options	80387SX



Continued on next page . . .

IBM CORPORATION

EDUQUEST 9603 (MODELS 010/01X)

EDUQUEST 9603,9606 (MODELS 040/04X)

... continued from previous page

CONNECTIONS			
Purpose	Location	Purpose	Location
Parallel port	CN2	Feature connector	CN8
Video connector	CN3	Floppy drive power connector	J1
Serial port	CN4	Floppy drive power connector 5.25"	J2
PS/2 mouse port	CN5	IDE interface power connector	J3
IDE interface	CN6	Riser slot	SL1
Floppy drive interface	CN7		

USER CONFIGURABLE SETTINGS		
Function	Label	Position
í Factory configured - do not alter	JP1	Open
í Feature connector not used with an Action Media card	JP3	Open
Feature connector uses adapter card and feature video connector	JP3	Closed
í On board video enabled	JP5	Pins 1 & 2 closed
On board video disabled	JP5	Pins 2 & 3 closed
í Password normal operation	JP7	Open
Password clear	JP7	Closed

DRAM CONFIGURATION (MODELS 010/01X)			
Size	Bank 0	Bank 1	Bank 2
1MB	1MB	None	None
3MB	1MB	(2) 1M x 9	None
5MB	1MB	(2) 1M x 9	(2) 1M x 9
8MB	1MB	(2) 4M x 9	None
16MB	1MB	(2) 4M x 9	(2) 4M x 9

Note: Bank 0 is factory installed and is not configurable. When 8MB or 16MB is installed, bank 0 is disabled.

DRAM CONFIGURATION (MODELS 040/04X)			
Size	Bank 0	Bank 1	Bank 2
1MB	4MB	None	None
3MB	4MB	(2) 1M x 9	None
5MB	4MB	(2) 1M x 9	(2) 1M x 9
8MB	4MB	(2) 4M x 9	None
16MB	4MB	(2) 4M x 9	(2) 4M x 9

Note: Bank 0 is factory installed and is not configurable. When 16MB is installed, bank 0 is disabled.

VIDEO MEMORY CONFIGURATION
Note: Board is installed with 512KB memory. The location is unidentified.