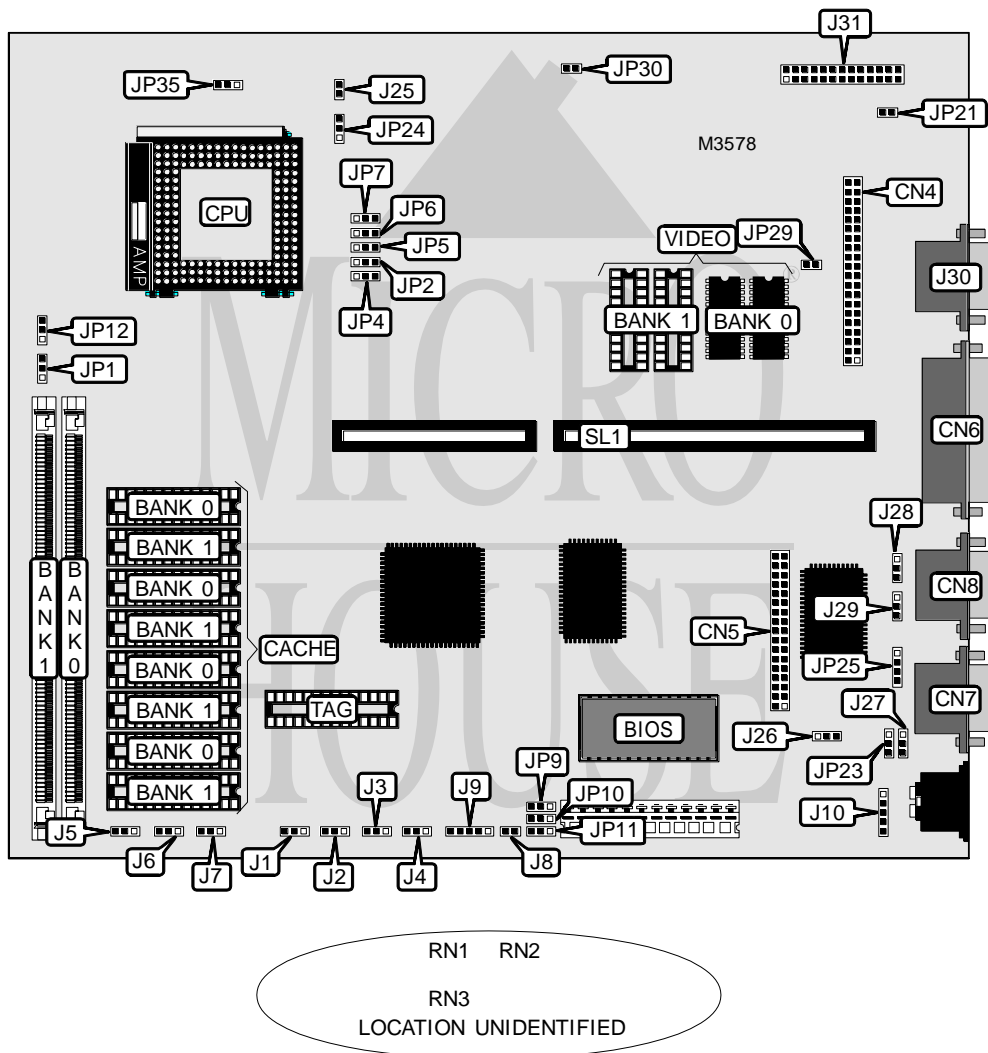


# SKYWELL TECHNOLOGY CORPORATION, LTD. PT2000A10

<b>Processor</b>	CX486DX/AM486DX(PLUS)/TI486DX/CX486DX2/TI486DX2/AM486DX2/ 80486DX2/AM486DX4/CX486DX4/TI486DX4/80486DX4/SL80486DX4/P24D/P24T/ CX5X86/CXM9/AM5X86
<b>Processor Speed</b>	25/33/40/50(internal)/50/66(internal)/75(internal)/100(internal)MHz
<b>Chip Set</b>	Unidentified
<b>Video Chip Set</b>	Unidentified
<b>Maximum Onboard Memory</b>	64MB
<b>Maximum Video Memory</b>	2MB
<b>Cache</b>	128/256/512/1024KB
<b>BIOS</b>	Award
<b>Dimensions</b>	254mm x 218mm
<b>I/O Options</b>	Floppy drive interface, IDE interface, green PC connector, parallel port, serial ports (2), VGA feature connector, VGA port, riser slot, IR connector
<b>NPU Options</b>	None



Continued on next page. . .

SKYWELL TECHNOLOGY CORPORATION, LTD.  
PT2000A10

... continued from previous page

CONNECTIONS			
Purpose	Location	Purpose	Location
IDE interface	CN4	Auxiliary keyboard connector	J10
Floppy drive interface	CN5	VGA port	J30
Parallel port	CN6	VGA feature connector	J31
Serial port 1	CN7	IDE interface LED	JP21
Serial port 2	CN8	IR connector	JP25
Reset switch	J8	Riser slot	SL1
Power LED & keylock	J9		

USER CONFIGURABLE SETTINGS		
Function	Label	Position
í VGA address select normal operation	JP12	Pins 1 & 2 closed
VGA address select use A27 - A31	JP12	Pins 2 & 3 closed
í CMOS memory normal operation	JP23	Pins 1 & 2 closed
CMOS memory clear	JP23	Pins 2 & 3 closed
í Factory configured - do not alter	JP29	Unidentified
í Factory configured - do not alter	JP30	Unidentified

DRAM CONFIGURATION		
Size	Bank 0	Bank 1
1MB	(1) 256K x 36	None
2MB	(1) 512K x 36	None
2MB	(1) 256K x 36	(1) 256K x 36
3MB	(1) 256K x 36	(1) 512K x 36
3MB	(1) 512K x 36	(1) 256K x 36
4MB	(1) 1M x 36	None
4MB	(1) 512K x 36	(1) 512K x 36
5MB	(1) 256K x 36	(1) 1M x 36
5MB	(1) 1M x 36	(1) 256K x 36
6MB	(1) 512K x 36	(1) 1M x 36
6MB	(1) 1M x 36	(1) 512K x 36
8MB	(1) 2M x 36	None
8MB	(1) 1M x 36	(1) 1M x 36
9MB	(1) 2M x 36	(1) 256K x 36
10MB	(1) 2M x 36	(1) 512K x 36
12MB	(1) 2M x 36	(1) 1M x 36
16MB	(1) 4M x 36	None
17MB	(1) 256K x 36	(1) 4M x 36
17MB	(1) 4M x 36	(1) 256K x 36
18MB	(1) 512K x 36	(1) 4M x 36
18MB	(1) 4M x 36	(1) 512K x 36
20MB	(1) 1M x 36	(1) 4M x 36
20MB	(1) 4M x 36	(1) 1M x 36

Continued on next page...

SKYWELL TECHNOLOGY CORPORATION, LTD.  
PT2000A10

... continued from previous page

DRAM CONFIGURATION (CON'T)		
Size	Bank 0	Bank 1
24MB	(1) 2M x 36	(1) 4M x 36
32MB	(1) 8M x 36	None
32MB	(1) 4M x 36	(1) 4M x 36
33MB	(1) 256K x 36	(1) 8M x 36
33MB	(1) 8M x 36	(1) 256K x 36
34MB	(1) 512K x 36	(1) 8M x 36
34MB	(1) 8M x 36	(1) 512K x 36
36MB	(1) 1M x 36	(1) 8M x 36
36MB	(1) 8M x 36	(1) 1M x 36
40MB	(1) 2M x 36	(1) 8M x 36
48MB	(1) 4M x 36	(1) 8M x 36
48MB	(1) 8M x 36	(1) 4M x 36
64MB	(1) 16M x 36	None
64MB	(1) 8M x 36	(1) 8M x 36

CACHE CONFIGURATION			
Size	Bank 0	Bank 1	TAG
128KB	(4) 32K x 8	None	(1) 8K x 8
256KB (A)	(4) 32K x 8	(4) 32K x 8	(1) 32K x 8
256KB (B)	(4) 64K x 8	None	(1) 32K x 8
512KB (A)	(4) 64K x 8	(4) 64K x 8	(1) 32K x 8
512KB (B)	(4) 128K x 8	None	(1) 32K x 8
1MB	(4) 128K x 8	(4) 128K x 8	(1) 64K x 8

CACHE JUMPER CONFIGURATION			
Size	J1	J2	J3
128KB	Pins 1 & 2 closed	Pins 1 & 2 closed	Pins 1 & 2 closed
256KB (A)	Pins 1 & 2 closed	Pins 1 & 2 closed	Pins 1 & 2 closed
256KB (B)	Pins 1 & 2 closed	Pins 1 & 2 closed	Pins 1 & 2 closed
512KB (A)	Pins 1 & 2 closed	Pins 1 & 2 closed	Pins 2 & 3 closed
512KB (B)	Pins 1 & 2 closed	Pins 1 & 2 closed	Pins 2 & 3 closed
1MB	Pins 1 & 2 closed	Pins 1 & 2 closed	Pins 2 & 3 closed

CACHE JUMPER CONFIGURATION (CON'T)				
Size	J4	J5	J6	J7
128KB	Pins 1 & 2 closed	Pins 2 & 3 closed	Pins 1 & 2 closed	Pins 1 & 2 closed
256KB (A)	Pins 1 & 2 closed	Pins 1 & 2 closed	Pins 1 & 2 closed	Pins 1 & 2 closed
256KB (B)	Pins 1 & 2 closed	Pins 1 & 2 closed	Pins 2 & 3 closed	Pins 1 & 2 closed
512KB (A)	Pins 2 & 3 closed	Pins 1 & 2 closed	Pins 1 & 2 closed	Pins 1 & 2 closed
512KB (B)	Pins 2 & 3 closed	Pins 1 & 2 closed	Pins 1 & 2 closed	Pins 2 & 3 closed
1MB	Pins 2 & 3 closed	Pins 1 & 2 closed	Pins 1 & 2 closed	Pins 1 & 2 closed

Continued on next page...

**SKYWELL TECHNOLOGY CORPORATION, LTD.**  
**PT2000A10**

... continued from previous page

VIDEO MEMORY CONFIGURATION		
Size	Bank 0	Bank 1
1MB	1MB	None
2MB	1MB	1MB

Note: The size of the chips are unidentified.

CPU SPEED SELECTION			
Speed	JP9	JP10	JP11
25MHz	Pins 2 & 3 closed	Pins 1 & 2 closed	Pins 2 & 3 closed
33MHz	Pins 2 & 3 closed	Pins 2 & 3 closed	Pins 1 & 2 closed
40MHz	Pins 1 & 2 closed	Pins 1 & 2 closed	Pins 2 & 3 closed
50iMHz	Pins 2 & 3 closed	Pins 1 & 2 closed	Pins 2 & 3 closed
50MHz	Pins 1 & 2 closed	Pins 2 & 3 closed	Pins 1 & 2 closed
66iMHz	Pins 2 & 3 closed	Pins 2 & 3 closed	Pins 1 & 2 closed
75iMHz	Pins 2 & 3 closed	Pins 1 & 2 closed	Pins 2 & 3 closed
100iMHz	Pins 2 & 3 closed	Pins 2 & 3 closed	Pins 1 & 2 closed

CPU TYPE SELECTION					
Type	JP1	JP2	JP4	JP5	JP6
CX486DX	Open	1 & 2	1 & 2	1 & 2	1 & 2
AM486DX (PLUS)	1 & 2	1 & 2	2 & 3	2 & 3	1 & 2
TI486DX	Open	1 & 2	1 & 2	1 & 2	1 & 2
CX486DX2	Open	1 & 2	1 & 2	1 & 2	1 & 2
TI486DX2	Open	1 & 2	1 & 2	1 & 2	1 & 2
AM486DX2	1 & 2	1 & 2	2 & 3	2 & 3	1 & 2
80486DX2	Open	1 & 2	1 & 2	Open	1 & 2
AM486DX4	1 & 2	1 & 2	2 & 3	2 & 3	1 & 2
CX486DX4	Open	1 & 2	1 & 2	1 & 2	1 & 2
TI486DX4	Open	1 & 2	1 & 2	1 & 2	1 & 2
80486DX4	Open	1 & 2	1 & 2	Open	1 & 2
SL80486DX4	Open	1 & 2	1 & 2	Open	1 & 2
P24D	1 & 2	1 & 2	1 & 2	2 & 3	1 & 2
P24T	1 & 2	1 & 2	1 & 2	2 & 3	1 & 2
CX5X86	1 & 2	1 & 2	1 & 2	2 & 3	1 & 2
CX M9	Open	1 & 2	1 & 2	2 & 3	1 & 2
AM5X86	1 & 2	1 & 2	2 & 3	2 & 3	1 & 2

Note: Pins designated should be in the closed position.

Continued on next page...

SKYWELL TECHNOLOGY CORPORATION, LTD.  
PT2000AIO

... continued from previous page

CPU TYPE SELECTION (CON'T)					
Type	JP7	JP35	RN1	RN1	RN3
CX486DX	1 & 2	1 & 2	Not installed	Installed	Not installed
AM486DX (PLUS)	1 & 2	1 & 2	Not installed	Not installed	Installed
TI486DX	1 & 2	1 & 2	Not installed	Installed	Not installed
CX486DX2	1 & 2	1 & 2	Not installed	Installed	Not installed
TI486DX2	1 & 2	1 & 2	Not installed	Installed	Not installed
AM486DX2	1 & 2	1 & 2	Not installed	Not installed	Installed
80486DX2	1 & 2	2 & 3	Not installed	Not installed	Installed
AM486DX4	1 & 2	1 & 2	Not installed	Not installed	Installed
CX486DX4	1 & 2	1 & 2	Not installed	Installed	Not installed
TI486DX4	1 & 2	1 & 2	Not installed	Installed	Not installed
80486DX4	1 & 2	1 & 2	Not installed	Not installed	Installed
SL80486DX4	1 & 2	1 & 2	Not installed	Not installed	Installed
P24D	1 & 2	1 & 2	Not installed	Not installed	Installed
P24T	1 & 2	1 & 2	Not installed	Not installed	Installed
CX5X86	1 & 2	1 & 2	Not installed	Not installed	Installed
CX M9	1 & 2	1 & 2	Not installed	Not installed	Installed
AM5X86	1 & 2	1 & 2	Not installed	Not installed	Installed

Note: Pins designated should be in the closed position.

CPU VOLTAGE SELECTION		
Voltage	J25	JP24
3.3v	Open	Pins 2 & 3 closed
3.45v	Open	Pins 1 & 2 closed
5v	Pins 1 & 2 closed	Open

SERIAL PORT RI SELECTION		
Setting	J26 (COM1)	J27 (COM2)
5v	Pins 1 & 2 closed	Pins 1 & 2 closed
RI	Pins 2 & 3 closed	Pins 2 & 3 closed

SERIAL PORT DCD SELECTION		
Setting	J28 (COM1)	J29 (COM2)
5v	Pins 1 & 2 closed	Pins 1 & 2 closed
DCD	Pins 2 & 3 closed	Pins 2 & 3 closed