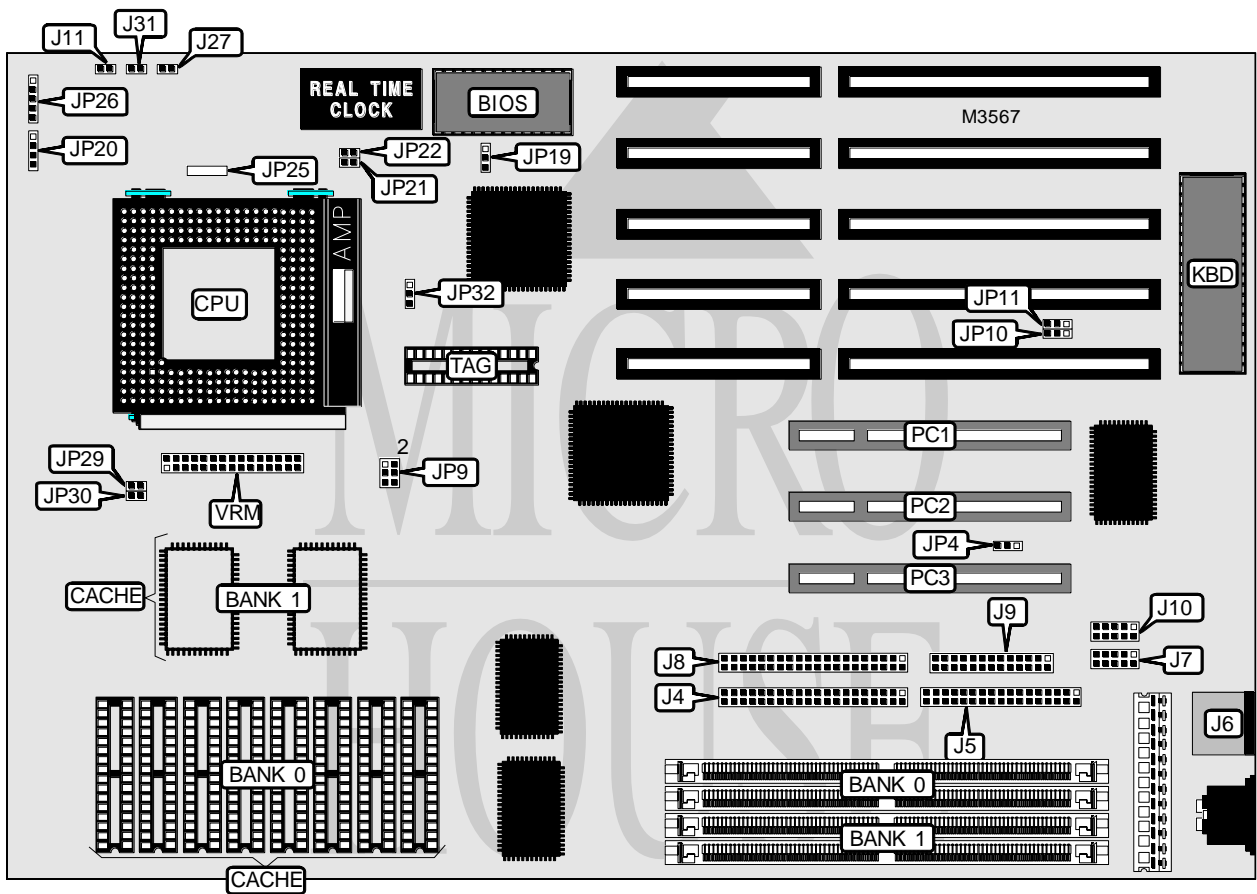


DTK COMPUTER, INC. PAM-0054I(VER. 1.10a)

Processor	Pentium
Processor Speed	75/90/100/120/133/150MHz
Chip Set	Unidentified
Video Chip Set	None
Maximum Onboard Memory	128MB (EDO supported)
Maximum Video Memory	None
Cache	256/512KB
BIOS	AMI/Award
Dimensions	330mm x 218mm
I/O Options	32-bit PCI slots (3), floppy drive interface, IDE interfaces (2), parallel port, PS/2 mouse port, serial ports (2), IR connector, VRM connector
NPU Options	None



Continued on next page...

DTK COMPUTER, INC.
PAM-0054I(VER. 1.10a)

... continued from previous page

CONNECTIONS			
Purpose	Location	Purpose	Location
IDE interface 1	J4	Chassis fan power	J25
Floppy drive interface	J5	Reset switch	J27
PS/2 mouse port	J6	Turbo LED	J31
Serial port 1	J7	Speaker	JP20
IDE interface 2	J8	Power LED & keylock	JP26
Parallel port	J9	32-bit PCI slots	PC1 - PC4
Serial port 2	J10	VRM connector	VRM
IDE interface LED	J11		

USER CONFIGURABLE SETTINGS		
Function	Label	Position
On board I/O enabled	JP4	Pins 1 & 2 closed
On board I/O disabled	JP4	Pins 2 & 3 closed
Flash BIOS voltage select 12v	JP19	Pins 1 & 2 closed
Flash BIOS voltage select 5v	JP19	Pins 2 & 3 closed
í CMOS memory normal operation	JP22	Open
CMOS memory clear	JP22	Closed

DRAM CONFIGURATION		
Size	Bank 0	Bank 1
8MB	(2) 1M x 36	None
16MB	(2) 1M x 36	(2) 1M x 36
16MB	(2) 2M x 36	None
24MB	(2) 1M x 36	(2) 2M x 36
32MB	(2) 2M x 36	(2) 2M x 36
32MB	(2) 4M x 36	None
40MB	(2) 4M x 36	(2) 1M x 36
48MB	(2) 4M x 36	(2) 2M x 36
64MB	(2) 8M x 36	None
64MB	(2) 4M x 36	(2) 4M x 36
72MB	(2) 1M x 36	(2) 8M x 36
80MB	(2) 8M x 36	(2) 2M x 36
96MB	(2) 4M x 36	(2) 8M x 36
128MB	(2) 8M x 36	(2) 8M x 36

Note: Board accepts EDO memory. Banks are interchangeable.

CACHE CONFIGURATION			
Size	Bank 0	Bank 1	TAG
256KB (A)	(8) 32K x 8	None	(1) 8K/16K/32K x 8
256KB (B)	None	(2) 32K x 32	(1) 8K/16K/32K x 8
512KB	(8) 64K x 8	None	(1) 16K/32K x 8

Continued on next page...

DTK COMPUTER, INC.
PAM-0054I(VER. 1.10a)

... continued from previous page

CACHE JUMPER CONFIGURATION	
Size	JP32
None	Pins 1 & 2 closed
256KB (A)	Pins 1 & 2 closed
256KB (B)	Pins 1 & 2 closed
512KB	Pins 2 & 3 closed

CPU SPEED SELECTION (W42C25)		
CPU speed	JP9	JP21
75MHz	Pins 5 & 6 closed	Open
90MHz	Pins 1 & 2, 3 & 4 closed	Open
100MHz	Pins 3 & 4 closed	Open
120MHz	Pins 1 & 2, 3 & 4 closed	Closed
133MHz	Pins 3 & 4 closed	Closed

CPU SPEED SELECTION (MX8318)		
CPU speed	JP9	JP21
75MHz	Pins 5 & 6 closed	Open
90MHz	Pins 3 & 4 closed	Open
100MHz	Pins 1 & 2, 5 & 6 closed	Open
120MHz	Pins 3 & 4 closed	Closed
133MHz	Pins 1 & 2, 5 & 6 closed	Closed

CPU SPEED SELECTION (IMI1464)		
CPU speed	JP9	JP21
75MHz	Pins 1 & 2 closed	Open
90MHz	Pins 1 & 2, 5 & 6 closed	Open
100MHz	Pins 1 & 2, 3 & 4, 5 & 6 closed	Open
120MHz	Pins 1 & 2, 5 & 6 closed	Closed
133MHz	Pins 1 & 2, 3 & 4, 5 & 6 closed	Closed

CPU VOLTAGE SELECTION		
Voltage	JP29	JP30
3.4v	Closed	Open
3.5v	Open	Closed

DMA CHANNEL SELECTION		
Channel	JP10	JP11
1	Pins 1 & 2 closed	Pins 1 & 2 closed
3	Pins 2 & 3 closed	Pins 2 & 3 closed