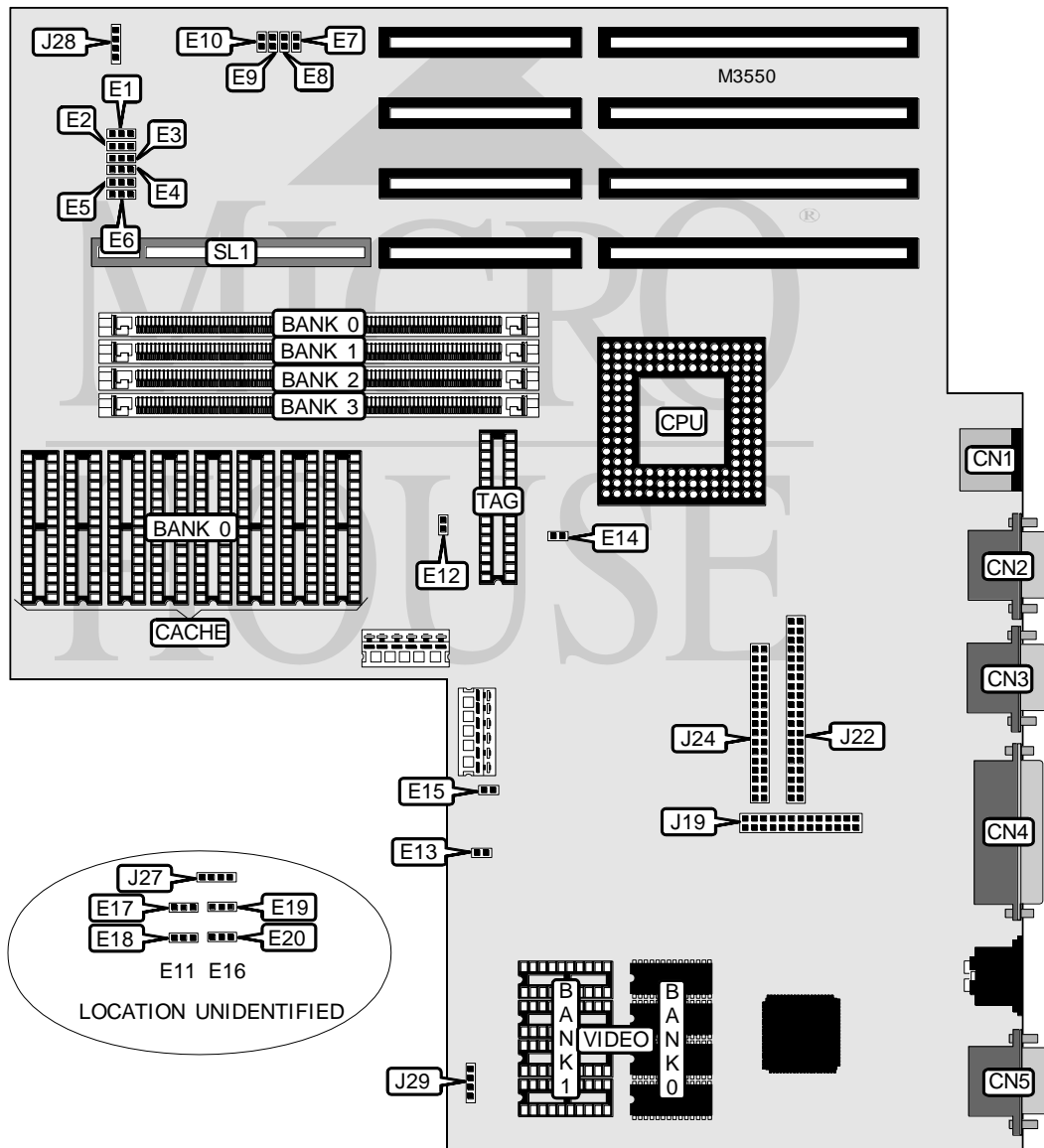


AST RESEARCH, INC. BRAVO LC 4/100T

Processor	80486SX/SL80486DX/SL80486DX2/SL80486DX4/P24T
Processor Speed	25/33/50(internal)/66(internal)/75(internal)/100(internal)MHz
Chip Set	Unidentified
Video Chip Set	Cirrus Logic
Maximum Onboard Memory	64MB
Maximum Video Memory	1MB
Cache	64/256KB
BIOS	Unidentified
Dimensions	355mm x 304mm
I/O Options	32-bit VESA local bus slot, floppy drive interface, IDE interface, parallel port, PS/2 mouse port, serial ports (2), 8514 video pass through connector, VGA port
NPU Options	None



Continued on next page . . .

AST RESEARCH, INC.
BRAVO LC 4/100T

... continued from previous page

CONNECTIONS			
Purpose	Location	Purpose	Location
PS/2 mouse port	CN1	IDE interface	J22
Serial port	CN2	Floppy drive interface	J24
Serial port	CN3	Speaker	J27
Parallel port	CN4	Chassis fan power	J28
VGA port	CN5	Front panel LEDs	J29
8514 video pass through connector	J19	32-bit VESA local bus slot	SL1

USER CONFIGURABLE SETTINGS		
Function	Label	Position
í Parallel port IRQ select IRQ7	E2	Pins 1 & 2 closed
Parallel port IRQ select IRQ5	E2	Pins 2 & 3 closed
í On board video enabled	E7	Closed
On board video disabled	E7	Open
í Monitor type select color	E8	Closed
Monitor type select monochrome	E8	Open
í Factory configured - do not alter	E9	Closed
í Password normal operation	E10	Closed
Password clear	E10	Open
í Factory configured - do not alter	E11	Open
í Factory configured - do not alter	E16	Open

DRAM CONFIGURATION				
Size	Bank 0	Bank 1	Bank 2	Bank 3
1MB	(1) 256K x 36	None	None	None
2MB	(1) 256K x 36	(1) 256K x 36	None	None
3MB	(1) 256K x 36	(1) 256K x 36	(1) 256K x 36	None
4MB	(1) 256K x 36	(1) 256K x 36	(1) 256K x 36	(1) 256K x 36
4MB	(1) 1M x 36	None	None	None
5MB	(1) 1M x 36	(1) 256K x 36	None	None
6MB	(1) 1M x 36	(1) 256K x 36	(1) 256K x 36	None
7MB	(1) 1M x 36	(1) 256K x 36	(1) 256K x 36	(1) 256K x 36
8MB	(1) 1M x 36	(1) 1M x 36	None	None
9MB	(1) 1M x 36	(1) 1M x 36	(1) 256K x 36	None
10MB	(1) 1M x 36	(1) 1M x 36	(1) 256K x 36	(1) 256K x 36
12MB	(1) 1M x 36	(1) 1M x 36	(1) 1M x 36	None
13MB	(1) 1M x 36	(1) 1M x 36	(1) 1M x 36	(1) 256K x 36
16MB	(1) 1M x 36	(1) 1M x 36	(1) 1M x 36	(1) 1M x 36
16MB	(1) 4M x 36	None	None	None
17MB	(1) 4M x 36	(1) 256K x 36	None	None
18MB	(1) 4M x 36	(1) 256K x 36	(1) 256K x 36	None
19MB	(1) 4M x 36	(1) 256K x 36	(1) 256K x 36	(1) 256K x 36
20MB	(1) 4M x 36	(1) 1M x 36	None	None

Continued on next page...

AST RESEARCH, INC.
BRAVO LC 4/100T

... continued from previous page

DRAM CONFIGURATION (CON'T)				
Size	Bank 0	Bank 1	Bank 2	Bank 3
21MB	(1) 4M x 36	(1) 1M x 36	(1) 256K x 36	None
22MB	(1) 4M x 36	(1) 1M x 36	(1) 256K x 36	(1) 256K x 36
24MB	(1) 4M x 36	(1) 1M x 36	(1) 1M x 36	None
25MB	(1) 4M x 36	(1) 1M x 36	(1) 1M x 36	(1) 256K x 36
28MB	(1) 4M x 36	(1) 1M x 36	(1) 1M x 36	(1) 1M x 36
32MB	(1) 4M x 36	(1) 4M x 36	None	None
33MB	(1) 4M x 36	(1) 4M x 36	(1) 256K x 36	None
34MB	(1) 4M x 36	(1) 4M x 36	(1) 256K x 36	(1) 256K x 36
36MB	(1) 4M x 36	(1) 4M x 36	(1) 1M x 36	None
37MB	(1) 4M x 36	(1) 4M x 36	(1) 1M x 36	(1) 256K x 36
40MB	(1) 4M x 36	(1) 4M x 36	(1) 1M x 36	(1) 1M x 36
48MB	(1) 4M x 36	(1) 4M x 36	(1) 4M x 36	None
49MB	(1) 4M x 36	(1) 4M x 36	(1) 4M x 36	(1) 256K x 36
52MB	(1) 4M x 36	(1) 4M x 36	(1) 4M x 36	(1) 1M x 36
64MB	(1) 4M x 36	(1) 4M x 36	(1) 4M x 36	(1) 4M x 36

CACHE CONFIGURATION		
Size	Bank 0	TAG
64KB	(8) 8K x 8	(1) 8K x 8
256KB	(8) 32K x 8	(1) 32K x 8

CACHE JUMPER CONFIGURATION		
Size	E12	E14
64KB	Open	Open
256KB	Closed	Closed

CACHE TYPE CONFIGURATION			
Type	E1	E6	E20
Write through	Pins 1 & 2 closed	Pins 1 & 2 closed	Open
Write back	Pins 2 & 3 closed	Pins 2 & 3 closed	Closed

Note: E20 may not be present on all boards.

VIDEO MEMORY CONFIGURATION (1994 CONFIGURATION)		
Size	Bank 0	Bank 1
512KB	(4) 256K x 4	None
1MB	(4) 256K x 4	(4) 256K x 4

Note: Bank 0 is factory installed and is not configurable. On some revisions, Bank 1 may be factory installed. Board shown uses this configuration.

Continued on next page...

AST RESEARCH, INC.
BRAVO LC 4/100T

... continued from previous page

VIDEO MEMORY CONFIGURATION (1995 CONFIGURATION)		
Size	Bank 0	Bank 1
512KB	(1) 256K x 16	None
1MB	(1) 256K x 16	(1) 256K x 16

Note: Bank 0 is factory installed and is not configurable. On some revisions, Bank 1 may be factory installed. If board is a 1995 configuration, install the upgrade chip in socket U802.

CPU SPEED SELECTION	
Speed	E15
25MHz	Closed
33MHz	Open
50iMHz	Closed
66iMHz	Open
75iMHz	Closed
100iMHz	Open

CPU TYPE SELECTION				
Type	E3	E4	E5	E13
80486SX (PQFP)	Pins 2 & 3 closed	Pins 2 & 3 closed	Pins 2 & 3 closed	Open
80486SX (PGA)	Pins 1 & 2 closed	Pins 1 & 2 closed	Pins 1 & 2 closed	Closed
SL80486DX	Pins 2 & 3 closed	Pins 2 & 3 closed	Pins 2 & 3 closed	Closed
SL80486DX2	Pins 2 & 3 closed	Pins 2 & 3 closed	Pins 2 & 3 closed	Closed
SL80486DX4	Pins 2 & 3 closed	Pins 2 & 3 closed	Pins 2 & 3 closed	Closed
P24T	Pins 2 & 3 closed	Pins 1 & 2 closed	Pins 2 & 3 closed	Closed

CPU TYPE SELECTION			
Type	E17	E18	E19
Cyrix	Pins 2 & 3 closed	Pins 2 & 3 closed	Pins 2 & 3 closed
Intel	Pins 1 & 2 closed	Pins 1 & 2 closed	Pins 1 & 2 closed

Note: These jumpers may not be present on all boards. If they are not, board only supports processor that was shipped from the factory.