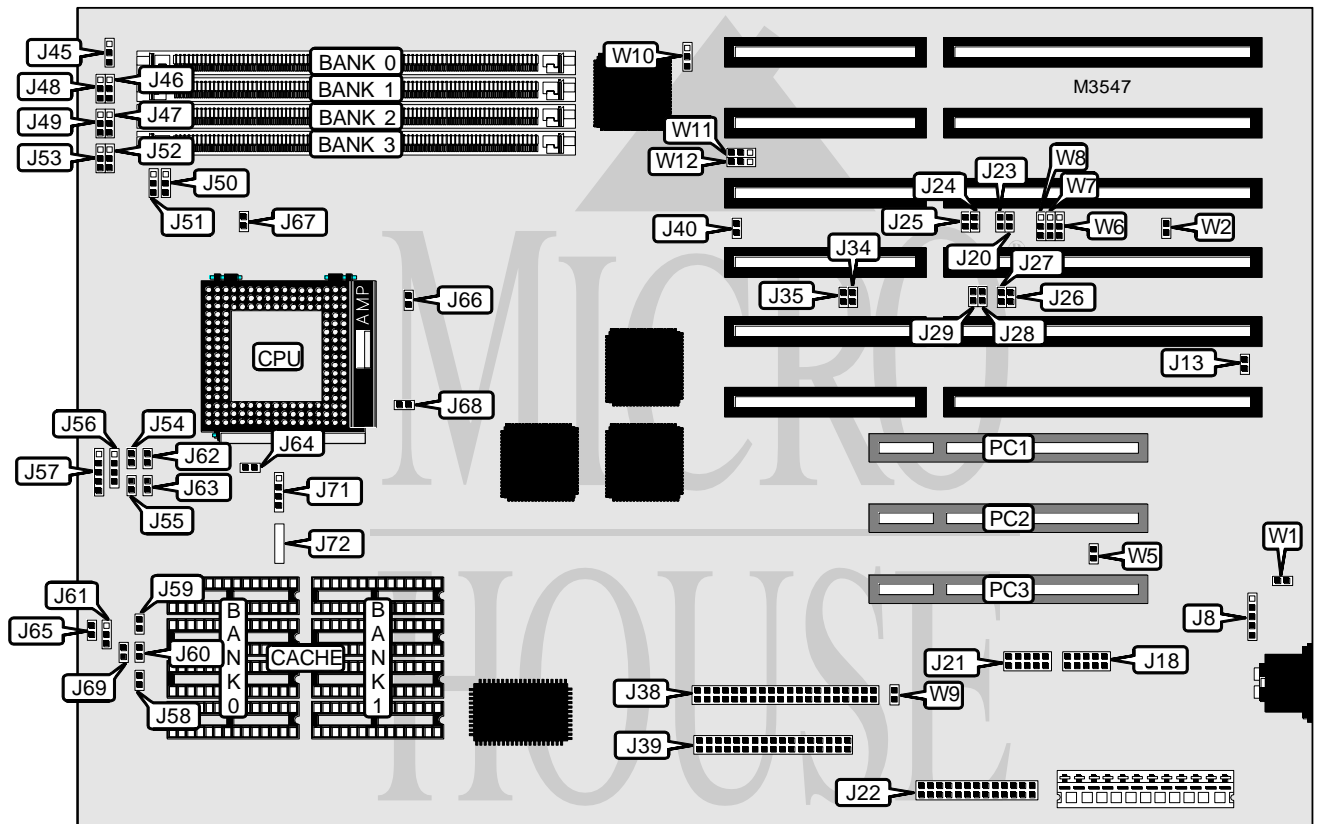


MICRONICS COMPUTERS, INC.

M 4 P

Processor	80486SX/80486DX/80486DX2
Processor Speed	25/33/50(internal)/66(internal)MHz
Chip Set	Intel
Video Chip Set	None
Maximum Onboard Memory	128MB
Maximum Video Memory	None
Cache	128/256KB
BIOS	Unidentified
Dimensions	330mm x 218mm
I/O Options	32-bit PCI slots (3), floppy drive interface, IDE interface, parallel port, serial ports (2)
NPU Options	None



CONNECTIONS			
Purpose	Location	Purpose	Location
Auxiliary keyboard connector	J8	Reset switch	J55
Serial port 1	J18	Speaker	J56
Serial port 2	J21	Power LED & keylock	J57
Parallel port	J22	Turbo LED	J62
IDE interface	J38	Turbo switch	J63
Floppy drive interface	J39	32-bit PCI slots	PC1 - PC3
IDE interface LED	J54		

Continued on next page. . .

MICRONICS COMPUTERS, INC.

M 4 P

... continued from previous page

USER CONFIGURABLE SETTINGS		
Function	Label	Position
IRQ5 used by PCI	J27	Closed
IRQ5 available for ISA peripheral	J27	Open
IRQ11 used by PCI	J28	Closed
IRQ11 available for ISA peripheral	J28	Open
IRQ15 used by PCI	J29	Closed
IRQ15 available for ISA peripheral	J29	Open
PS/2 mouse enabled	J34	Closed
PS/2 mouse disabled	J34	Open
í Factory configured - do not alter	J46	Pins 1 & 2 closed
í Factory configured - do not alter	J47	Pins 2 & 3 closed
í Factory configured - do not alter	J48	Pins 1 & 2 closed
í Factory configured - do not alter	J49	Pins 1 & 2 closed
í Factory configured - do not alter	J50	Pins 1 & 2 closed
í Factory configured - do not alter	J51	Pins 2 & 3 closed
í Factory configured - do not alter	J59	Closed
í Factory configured - do not alter	J60	Open
Cache type select write through	J61	Pins 1 & 2 closed
Cache type select write back	J61	Pins 2 & 3 closed
í Factory configured - do not alter	J64	Open
í Factory configured - do not alter	J65	Open
í Factory configured - do not alter	J66	Open
í Factory configured - do not alter	J67	Open
í Factory configured - do not alter	J68	Open
í Factory configured - do not alter	J69	Open
í Factory configured - do not alter	J72	Open
í Factory configured - do not alter	W1	Open
Flash BIOS write protect disabled	W2	Closed
Flash BIOS write protect enabled	W2	Open
í Monitor type select color	W5	Closed
Monitor type select monochrome	W5	Open
Parallel port IRQ select IRQ7	W8	Pins 1 & 2 closed
Parallel port IRQ select IRQ5	W8	Pins 2 & 3 closed
í Factory configured - do not alter	W9	Open
Flash BIOS normal operation	W10	Pins 2 & 3 closed
Flash BIOS recovery mode	W10	Pins 1 & 2 closed

Continued on next page...

MICRONICS COMPUTERS, INC.

M 4 P

... continued from previous page

DRAM CONFIGURATION				
Size	Bank 0	Bank 1	Bank 2	Bank 3
1MB	(1) 256K x 36	None	None	None
2MB	(1) 512K x 36	None	None	None
2MB	(1) 256K x 36	(1) 256K x 36	None	None
3MB	(1) 512K x 36	(1) 256K x 36	None	None
3MB	(1) 256K x 36	(1) 256K x 36	(1) 256K x 36	None
3MB	(1) 256K x 36	(1) 512K x 36	None	None
4MB	(1) 1M x 36	None	None	None
4MB	(1) 512K x 36	(1) 256K x 36	(1) 256K x 36	None
4MB	(1) 512K x 36	(1) 512K x 36	None	None
4MB	(1) 256K x 36	(1) 256K x 36	(1) 256K x 36	(1) 256K x 36
5MB	(1) 1M x 36	(1) 256K x 36	None	None
5MB	(1) 512K x 36	(1) 256K x 36	(1) 256K x 36	(1) 256K x 36
6MB	(1) 512K x 36	(1) 512K x 36	(1) 512K x 36	None
6MB	(1) 512K x 36	(1) 1M x 36	None	None
7MB	(1) 1M x 36	(1) 256K x 36	(1) 256K x 36	(1) 256K x 36
7MB	(1) 256K x 36	(1) 512K x 36	(1) 512K x 36	(1) 512K x 36
8MB	(1) 2M x 36	None	None	None
8MB	(1) 1M x 36	(1) 512K x 36	(1) 512K x 36	None
8MB	(1) 1M x 36	(1) 1M x 36	None	None
8MB	(1) 512K x 36	(1) 512K x 36	(1) 512K x 36	(1) 512K x 36
9MB	(1) 2M x 36	(1) 256K x 36	None	None
9MB	(1) 256K x 36	(1) 1M x 36	(1) 1M x 36	None
10MB	(1) 1M x 36	(1) 512K x 36	(1) 512K x 36	(1) 512K x 36
10MB	(1) 512K x 36	(1) 1M x 36	(1) 1M x 36	None
10MB	(1) 512K x 36	(1) 2M x 36	None	None
11MB	(1) 2M x 36	(1) 256K x 36	(1) 256K x 36	(1) 256K x 36
12MB	(1) 2M x 36	(1) 512K x 36	(1) 512K x 36	None
12MB	(1) 2M x 36	(1) 1M x 36	None	None
12MB	(1) 1M x 36	(1) 1M x 36	(1) 1M x 36	None
12MB	(1) 1M x 36	(1) 2M x 36	None	None
13MB	(1) 256K x 36	(1) 1M x 36	(1) 1M x 36	(1) 1M x 36
14MB	(1) 2M x 36	(1) 512K x 36	(1) 512K x 36	(1) 512K x 36
14MB	(1) 512K x 36	(1) 1M x 36	(1) 1M x 36	(1) 1M x 36
16MB	(1) 4M x 36	None	None	None
16MB	(1) 2M x 36	(1) 1M x 36	(1) 1M x 36	None
16MB	(1) 2M x 36	(1) 2M x 36	None	None
16MB	(1) 1M x 36	(1) 1M x 36	(1) 1M x 36	(1) 1M x 36
17MB	(1) 4M x 36	(1) 256K x 36	None	None
17MB	(1) 256K x 36	(1) 2M x 36	(1) 2M x 36	None
17MB	(1) 256K x 36	(1) 4M x 36	None	None
18MB	(1) 4M x 36	(1) 256K x 36	(1) 256K x 36	None
18MB	(1) 4M x 36	(1) 512K x 36	None	None
18MB	(1) 512K x 36	(1) 2M x 36	(1) 2M x 36	None

Continued on next page. . .

MICRONICS COMPUTERS, INC.
M 4 P

... continued from previous page

DRAM CONFIGURATION (CON'T)				
Size	Bank 0	Bank 1	Bank 2	Bank 3
18MB	(1) 512K x 36	(1) 4M x 36	None	None
19MB	(1) 4M x 36	(1) 256K x 36	(1) 256K x 36	(1) 256K x 36
20MB	(1) 4M x 36	(1) 512K x 36	(1) 512K x 36	None
20MB	(1) 4M x 36	(1) 1M x 36	None	None
20MB	(1) 1M x 36	(1) 4M x 36	None	None
22MB	(1) 4M x 36	(1) 512K x 36	(1) 512K x 36	(1) 512K x 36
24MB	(1) 4M x 36	(1) 1M x 36	(1) 1M x 36	None
24MB	(1) 2M x 36	(1) 4M x 36	None	None
25MB	(1) 256K x 36	(1) 2M x 36	(1) 2M x 36	(1) 2M x 36
26MB	(1) 512K x 36	(1) 2M x 36	(1) 2M x 36	(1) 2M x 36
28MB	(1) 4M x 36	(1) 1M x 36	(1) 1M x 36	(1) 1M x 36
28MB	(1) 1M x 36	(1) 2M x 36	(1) 2M x 36	(1) 2M x 36
32MB	(1) 8M x 36	None	None	None
32MB	(1) 4M x 36	(1) 2M x 36	(1) 2M x 36	None
32MB	(1) 4M x 36	(1) 4M x 36	None	None
32MB	(1) 2M x 36	(1) 2M x 36	(1) 2M x 36	(1) 2M x 36
33MB	(1) 8M x 36	(1) 256K x 36	None	None
33MB	(1) 256K x 36	(1) 4M x 36	(1) 4M x 36	None
33MB	(1) 256K x 36	(1) 8M x 36	None	None
34MB	(1) 8M x 36	(1) 256K x 36	(1) 256K x 36	None
34MB	(1) 8M x 36	(1) 512K x 36	None	None
34MB	(1) 512K x 36	(1) 4M x 36	(1) 4M x 36	None
34MB	(1) 512K x 36	(1) 8M x 36	None	None
35MB	(1) 8M x 36	(1) 256K x 36	(1) 256K x 36	(1) 256K x 36
36MB	(1) 8M x 36	(1) 512K x 36	(1) 512K x 36	None
36MB	(1) 8M x 36	(1) 1M x 36	None	None
36MB	(1) 1M x 36	(1) 4M x 36	(1) 4M x 36	None
36MB	(1) 1M x 36	(1) 8M x 36	None	None
38MB	(1) 8M x 36	(1) 512K x 36	(1) 512K x 36	(1) 512K x 36
40MB	(1) 8M x 36	(1) 1M x 36	(1) 1M x 36	None
40MB	(1) 8M x 36	(1) 2M x 36	None	None
40MB	(1) 2M x 36	(1) 4M x 36	(1) 4M x 36	None
40MB	(1) 2M x 36	(1) 8M x 36	None	None
44MB	(1) 8M x 36	(1) 1M x 36	(1) 1M x 36	(1) 1M x 36
48MB	(1) 8M x 36	(1) 2M x 36	(1) 2M x 36	None
48MB	(1) 4M x 36	(1) 4M x 36	(1) 4M x 36	None
48MB	(1) 4M x 36	(1) 8M x 36	None	None
49MB	(1) 256K x 36	(1) 4M x 36	(1) 4M x 36	(1) 4M x 36
50MB	(1) 512K x 36	(1) 4M x 36	(1) 4M x 36	(1) 4M x 36
52MB	(1) 1M x 36	(1) 4M x 36	(1) 4M x 36	(1) 4M x 36
56MB	(1) 8M x 36	(1) 2M x 36	(1) 2M x 36	(1) 2M x 36
56MB	(1) 2M x 36	(1) 4M x 36	(1) 4M x 36	(1) 4M x 36
64MB	(1) 8M x 36	(1) 4M x 36	(1) 4M x 36	None

Continued on next page...

MICRONICS COMPUTERS, INC.

M 4 P

... continued from previous page

DRAM CONFIGURATION (CON'T)				
Size	Bank 0	Bank 1	Bank 2	Bank 3
64MB	(1) 8M x 36	(1) 8M x 36	None	None
64MB	(1) 4M x 36	(1) 4M x 36	(1) 4M x 36	(1) 4M x 36
65MB	(1) 256K x 36	(1) 8M x 36	(1) 8M x 36	None
66MB	(1) 512K x 36	(1) 8M x 36	(1) 8M x 36	None
68MB	(1) 1M x 36	(1) 8M x 36	(1) 8M x 36	None
72MB	(1) 2M x 36	(1) 8M x 36	(1) 8M x 36	None
80MB	(1) 8M x 36	(1) 4M x 36	(1) 4M x 36	(1) 4M x 36
80MB	(1) 4M x 36	(1) 8M x 36	(1) 8M x 36	None
96MB	(1) 8M x 36	(1) 8M x 36	(1) 8M x 36	None
97MB	(1) 256K x 36	(1) 8M x 36	(1) 8M x 36	(1) 8M x 36
98MB	(1) 512K x 36	(1) 8M x 36	(1) 8M x 36	(1) 8M x 36
100MB	(1) 1M x 36	(1) 8M x 36	(1) 8M x 36	(1) 8M x 36
104MB	(1) 2M x 36	(1) 8M x 36	(1) 8M x 36	(1) 8M x 36
112MB	(1) 4M x 36	(1) 8M x 36	(1) 8M x 36	(1) 8M x 36
128MB	(1) 8M x 36	(1) 8M x 36	(1) 8M x 36	(1) 8M x 36

CACHE CONFIGURATION		
Size	Bank 0	Bank 1
128KB	(4) 32K x 8	None
256KB	(4) 32K x 8	(4) 32K x 8

CACHE JUMPER CONFIGURATION			
Size	J52	J53	J58
128KB	Pins 1 & 2 closed	Pins 2 & 3 closed	Open
256KB	Pins 2 & 3 closed	Pins 1 & 2 closed	Closed

CPU SPEED SELECTION		
Speed	J40	J45
25MHz	Open	Pins 2 & 3 closed
33MHz	Closed	Pins 1 & 2 closed
50iMHz	Open	Pins 2 & 3 closed
66iMHz	Closed	Pins 1 & 2 closed

CPU TYPE SELECTION	
Type	J71
80486SX	Pins 2 & 3 closed
80486DX	Pins 1 & 2, 3 & 4 closed
80486DX2	Pins 1 & 2, 3 & 4 closed

Continued on next page...

MICRONICS COMPUTERS, INC.
M 4 P

... continued from previous page

DMA CHANNEL SELECTION		
Channel	W6	W7
1	Pins 1 & 2 closed	Pins 1 & 2 closed
3	Pins 2 & 3 closed	Pins 2 & 3 closed

IDE DMA CHANNEL SELECTION		
Channel	W11	W12
6	Pins 1 & 2 closed	Pins 1 & 2 closed
7	Pins 2 & 3 closed	Pins 2 & 3 closed

DIRQ SELECTION							
DIRQ	J13	J20	J23	J24	J25	J26	J35
3	Open	Open	Open	Open	Closed	Open	Open
4	Open	Open	Open	Closed	Open	Open	Open
5	Open	Open	Open	Open	Open	Closed	Open
6	Open	Open	Closed	Open	Open	Open	Open
7	Open	Closed	Open	Open	Open	Open	Open
10	Closed	Open	Open	Open	Open	Open	Open
14	Open	Open	Open	Open	Open	Open	Closed