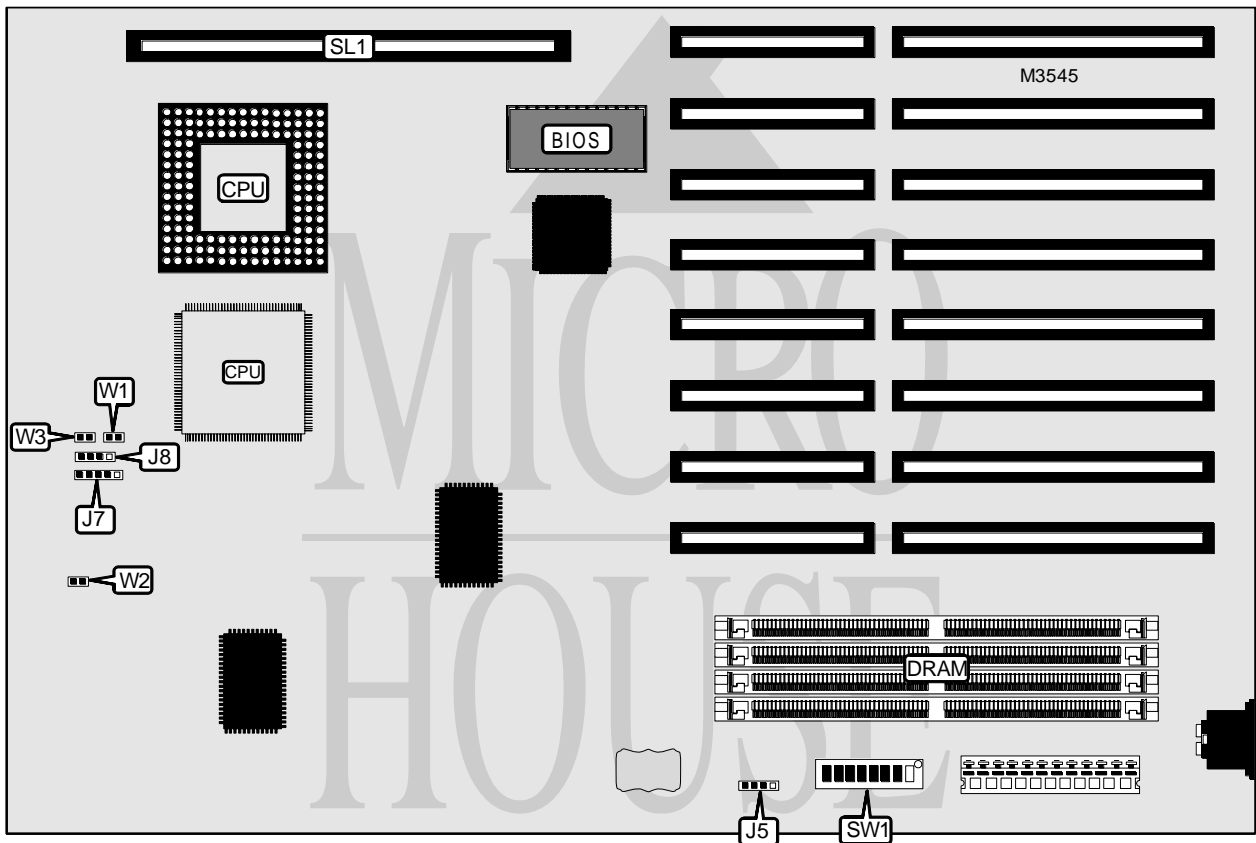


MICRONICS COMPUTERS, INC. BABY GEMINI-486SX (VER. 2)

Processor	80486SX
Processor Speed	20/25MHz
Chip Set	Unidentified
Video Chip Set	None
Maximum Onboard Memory	64MB
Maximum Video Memory	None
Cache	None
BIOS	Unidentified
Dimensions	330mm x 218mm
I/O Options	Riser slot
NPU Options	None



CONNECTIONS			
Purpose	Location	Purpose	Location
External battery	J5	Reset switch	W2
Power LED & keylock	J7	Turbo switch	W3
Speaker	J8	Riser slot	SL1
Turbo LED	W1		

Continued on next page . . .

MICRONICS COMPUTERS, INC.

BABY GEMINI-486SX (VER. 2)

... continued from previous page

USER CONFIGURABLE SETTINGS		
Function	Label	Position
í Factory configured - do not alter	SW1/7	Off
í Factory configured - do not alter	SW1/8	On

DRAM CONFIGURATION				
Size	Bank 0	Bank 1	Bank 2	Bank 3
4MB	(1) 1M x 36	None	None	None
8MB	(1) 1M x 36	(1) 1M x 36	None	None
12MB	(1) 1M x 36	(1) 1M x 36	(1) 1M x 36	None
16MB	(1) 1M x 36	(1) 1M x 36	(1) 1M x 36	(1) 1M x 36
16MB	(1) 4M x 36	None	None	None
20MB	(1) 1M x 36	(1) 4M x 36	None	None
24MB	(1) 1M x 36	(1) 1M x 36	(1) 4M x 36	None
28MB	(1) 1M x 36	(1) 1M x 36	(1) 1M x 36	(1) 4M x 36
32MB	(1) 4M x 36	(1) 4M x 36	None	None
36MB	(1) 1M x 36	(1) 4M x 36	(1) 4M x 36	None
40MB	(1) 1M x 36	(1) 1M x 36	(1) 4M x 36	(1) 4M x 36
48MB	(1) 4M x 36	(1) 4M x 36	(1) 4M x 36	None
52MB	(1) 1M x 36	(1) 4M x 36	(1) 4M x 36	(1) 4M x 36
64MB	(1) 4M x 36	(1) 4M x 36	(1) 4M x 36	(1) 4M x 36

Note: The location of the banks are unidentified.

DRAM SWITCH CONFIGURATION				
Size	SW1/1	SW1/2	SW1/3	SW1/4
4MB	On	On	On	On
8MB	Off	On	On	On
12MB	On	Off	On	On
16MB	Off	Off	On	On
16MB	On	On	Off	On
20MB	On	On	Off	Off
24MB	On	Off	On	Off
28MB	Off	On	On	Off
32MB	Off	On	Off	On
36MB	On	Off	Off	Off
40MB	Off	Off	On	Off
48MB	On	Off	Off	On
52MB	Off	Off	Off	Off
64MB	Off	Off	Off	On

CPU SPEED SELECTION		
Speed	SW1/5	SW1/6
20MHz	On	On
25MHz	Off	Off