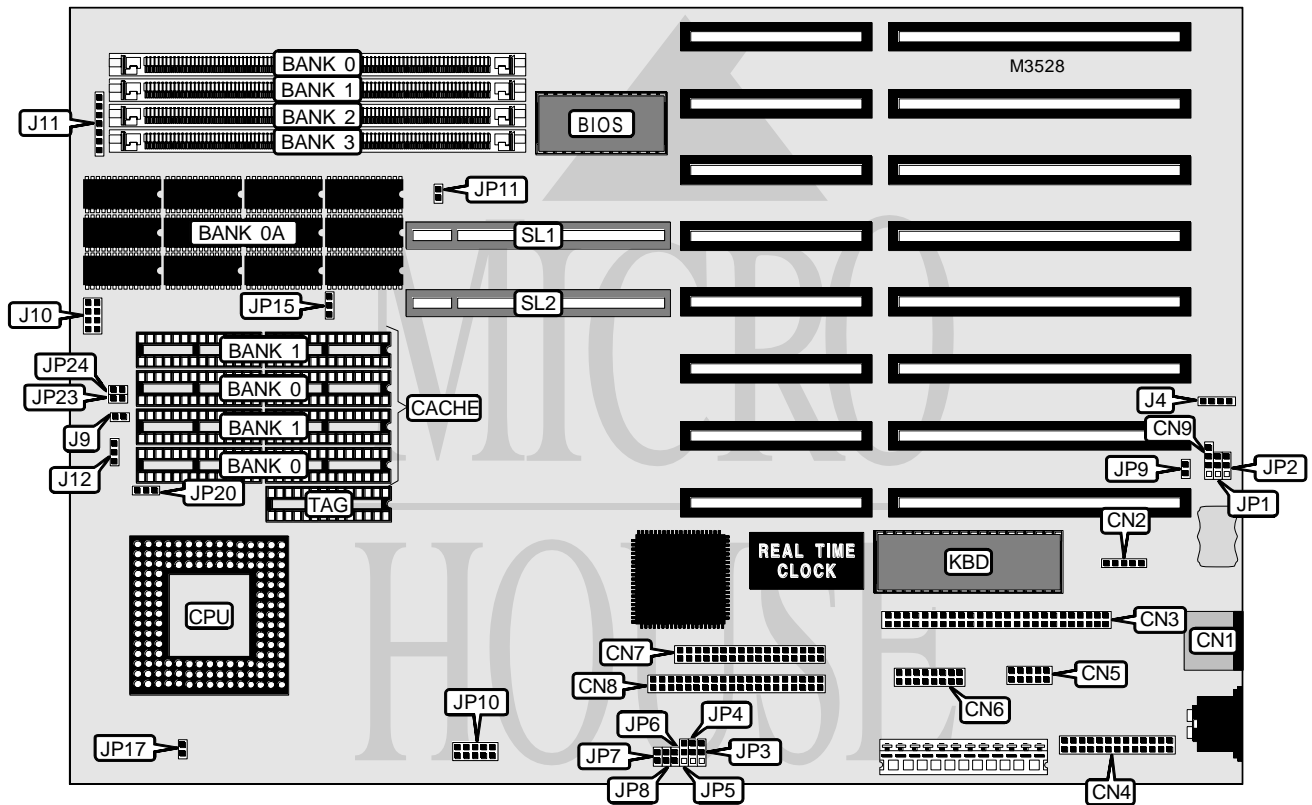


# ACER, INC. 486 VESA SYSTEM (VER. 1)

<b>Processor</b>	80486SX/80486DX/80486DX2
<b>Processor Speed</b>	20/25/33/40/50(internal)/50/66(internal)MHz
<b>Chip Set</b>	Unidentified
<b>Video Chip Set</b>	None
<b>Maximum Onboard Memory</b>	64MB
<b>Maximum Video Memory</b>	None
<b>Cache</b>	128/256KB
<b>BIOS</b>	Unidentified
<b>Dimensions</b>	330mm x 218mm
<b>I/O Options</b>	32-bit VESA local bus slots (2), floppy drive interface, IDE interface, SCSI connector, parallel port, PS/2 mouse port, serial ports (2)
<b>NPU Options</b>	None



CONNECTIONS			
Purpose	Location	Purpose	Location
PS/2 mouse port	CN1	IDE interface	CN8
HDD/FDD power connector for EPA	CN2	VGA control connector for EPA	J4
SCSI interface	CN3	Chassis fan power	J9
Parallel port	CN4	Front panel LEDs	J10
Serial port 1	CN5	Auxiliary keyboard/PS/2 mouse	J11
Serial port 2	CN6	IDE interface LED	J12
Floppy drive interface	CN7	32-bit VESA local bus slots	SL1 & SL2

Continued on next page. . .

**ACER, INC.**  
**486 VESA SYSTEM (VER. 1)**

... continued from previous page

USER CONFIGURABLE SETTINGS		
Function	Label	Position
Jumper information unavailable	CN9	Unidentified
í Password check disabled	JP1	Pins 2 & 3 closed
Password check enabled	JP1	Pins 1 & 2 closed
Jumper information unavailable	JP2	Unidentified
SCSI IRQ select IRQ10	JP3	Pins 1 & 2 closed
SCSI IRQ select IRQ11	JP3	Pins 2 & 3 closed
SCSI IRQ disabled	JP3	Open
í Factory configured - do not alter	JP4	Open
í Factory configured - do not alter	JP5	Open
SCSI I/O address select 340h - 35Fh	JP6	Open
SCSI I/O address select 140h - 15Fh	JP6	Closed
Onboard M5105 disabled	JP7	Open
Onboard M5105 enabled	JP7	Closed
í Parallel port bidirectional enabled	JP8	Closed
Parallel port bidirectional disabled	JP8	Open
Battery type select internal	JP9	Closed
Battery type select external	JP9	Open
Reset button disabled	JP23	Open
Reset button enabled	JP23	Closed
Keylock enabled	JP24	Open
Keylock disabled	JP24	Closed

DRAM CONFIGURATION					
Size	Bank 0A	Bank 0	Bank 1	Bank 2	Bank 3
4MB	4MB	None	None	None	None
8MB	4MB	None	(1) 1M x 36	None	None
12MB	4MB	None	(1) 1M x 36	(1) 1M x 36	None
16MB (A)	4MB	None	(1) 1M x 36	(1) 1M x 36	(1) 1M x 36
16MB (B)	4MB	(1) 4M x 36	None	None	None
20MB	4MB	None	(1) 4M x 36	None	None
24MB	4MB	None	(1) 1M x 36	(1) 4M x 36	None
32MB	4MB	(1) 4M x 36	(1) 4M x 36	None	None
36MB	4MB	None	(1) 4M x 36	(1) 4M x 36	None
40MB	4MB	None	(1) 1M x 36	(1) 4M x 36	(1) 4M x 36
48MB	4MB	(1) 4M x 36	(1) 4M x 36	(1) 4M x 36	None
64MB	4MB	(1) 4M x 36	(1) 4M x 36	(1) 4M x 36	(1) 4M x 36

Note: If Bank 0 is populated, Bank 0A needs to be disabled with JP15..

Continued on next page...

ACER, INC.  
486 VESA SYSTEM (VER. 1)

... continued from previous page

DRAM JUMPER CONFIGURATION	
Size	JP15
4MB	Pins 2 & 3 closed
8MB	Pins 2 & 3 closed
12MB	Pins 2 & 3 closed
16MB (A)	Pins 2 & 3 closed
16MB (B)	Pins 1 & 2 closed
20MB	Pins 2 & 3 closed
24MB	Pins 2 & 3 closed
32MB	Pins 1 & 2 closed
36MB	Pins 2 & 3 closed
40MB	Pins 2 & 3 closed
48MB	Pins 1 & 2 closed
64MB	Pins 1 & 2 closed

CACHE CONFIGURATION			
Size	Bank 0	Bank 1	TAG
128KB	(4) 32K x 8	None	(1) 32K x 8
256KB	(4) 32K x 8	(4) 32K x 8	(1) 32K x 8

CACHE JUMPER CONFIGURATION		
Size	JP17	JP20
128KB	Open	Pins 1 & 2 closed
256KB	Closed	Pins 2 & 3 closed

CPU SPEED SELECTION	
Speed	JP10
20MHz	Pins 1 & 6 closed
25MHz	Pins 2 & 7 closed
33MHz	Pins 3 & 8 closed
40MHz	Pins 4 & 9 closed
50iMHz	Pins 2 & 7 closed
50MHz	Pins 5 & 10 closed
66iMHz	Pins 3 & 8 closed

VL BUS WAIT STATE SELECTION	
Setting	JP11
0	Open
1	Closed