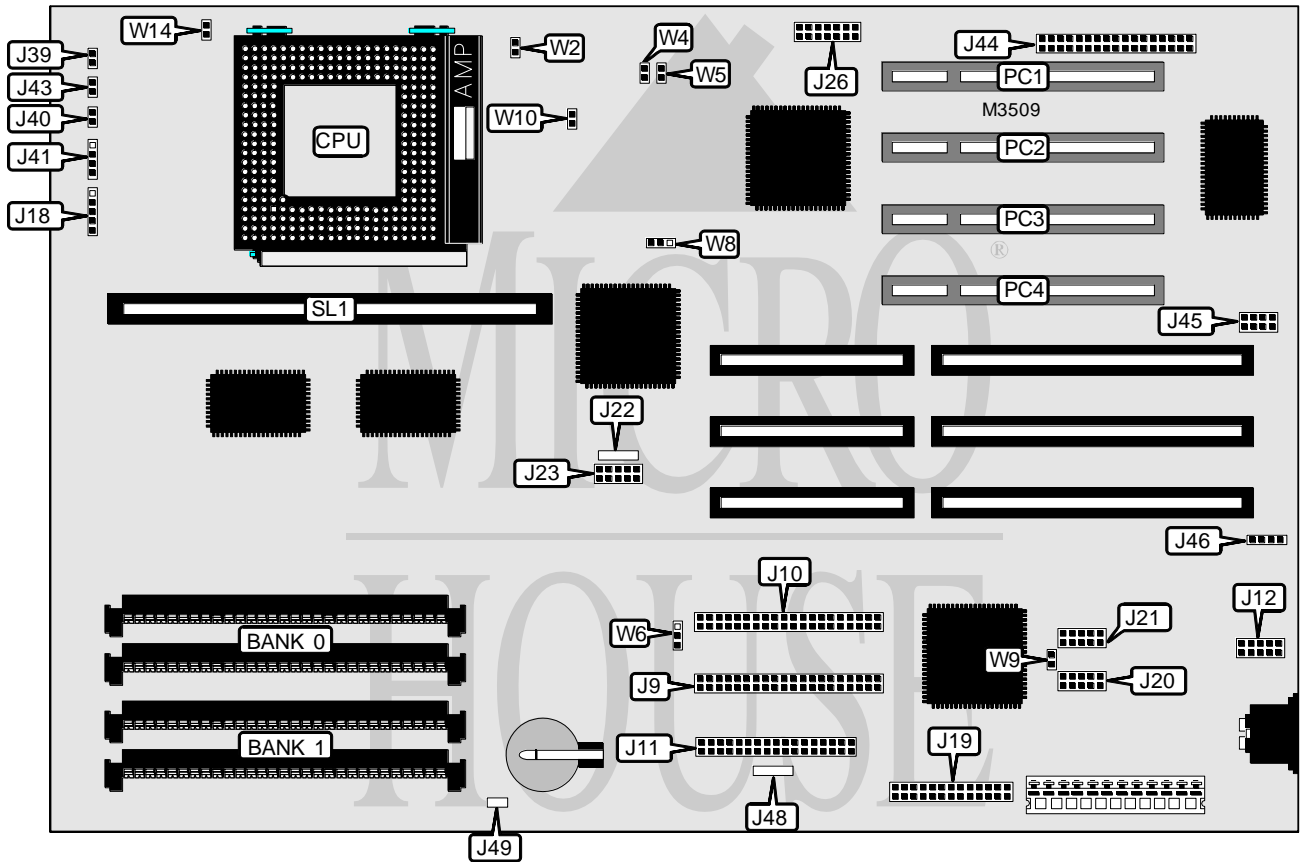


MICRONICS COMPUTERS, INC.

M54HI-PLUS

Processor	CX M1/Pentium
Processor Speed	75/90/100/120/133/150/166MHz
Chip Set	Intel
Video Chip Set	None
Maximum Onboard Memory	128MB (EDO supported)
Maximum Video Memory	None
Cache	256/512KB
BIOS	Phoenix
Dimensions	337mm x 216mm
I/O Options	32-bit PCI slots (4), floppy drive interface, IDE interfaces (2), parallel port, PS/2 mouse interface, serial ports (2), cache slot, IR connector, wavetable connector, legacy connector, CD-ROM sound connector, sound riser card connector
NPU Options	None



Continued on next page . . .

MICRONICS COMPUTERS, INC.

M54HI-PLUS

... continued from previous page

CONNECTIONS			
Purpose	Location	Purpose	Location
IDE interface 2	J9	Reset switch	J39
IDE interface 1	J10	IDE interface LED	J40
Floppy drive interface	J11	Speaker	J41
PS/2 mouse interface	J12	Turbo LED	J43
Power LED & keylock	J18	Sound riser card connector	J44
Parallel port	J19	Wavetable connector	J45
Serial port 1	J20	CD-ROM sound connector	J46
Serial port 2	J21	32-bit PCI slots	PC1 - PC4
IR connector	J23	Cache slot	SL1
Legacy connector	J26		

USER CONFIGURABLE SETTINGS		
Function	Label	Position
Jumper information unavailable	J22	Unidentified
Jumper information unavailable	J48	Unidentified
Jumper information unavailable	J49	Unidentified
í BIOS boot block normal operation	W6	Pins 2 & 3 closed
BIOS boot block reversed	W6	Pins 1 & 2 closed
í CMOS memory normal operation	W9	Open
CMOS memory clear	W9	Closed

DRAM CONFIGURATION		
Size	Bank 0	Bank 1
8MB	(2) 1M x 36	None
16MB	(2) 2M x 36	None
16MB	(2) 1M x 36	(2) 1M x 36
24MB	(2) 2M x 36	(2) 1M x 36
32MB	(2) 4M x 36	None
32MB	(2) 2M x 36	(2) 2M x 36
40MB	(2) 4M x 36	(2) 1M x 36
48MB	(2) 2M x 36	(2) 4M x 36
64MB	(2) 8M x 36	None
64MB	(2) 4M x 36	(2) 4M x 36
72MB	(2) 8M x 36	(2) 1M x 36
80MB	(2) 2M x 36	(2) 8M x 36
96MB	(2) 4M x 36	(2) 8M x 36
128MB	(2) 8M x 36	(2) 8M x 36

Note: Banks 0 & 1 are interchangeable.

Continued on next page...

MICRONICS COMPUTERS, INC.

M54HI-PLUS

... continued from previous page

CACHE CONFIGURATION	
Size	SL1
256KB	256KB module installed
512KB	512KB module installed

CPU SPEED SELECTION							
CPU speed	Clock speed	Multiplier	W2	W4	W5	W8	W10
75MHz	50MHz	1.5x	Open	Closed	Closed	1 & 2	Open
90MHz	60MHz	1.5x	Open	Open	Closed	2 & 3	Open
100MHz	66MHz	1.5x	Open	Closed	Open	2 & 3	Open
120MHz	60MHz	2x	Closed	Open	Closed	2 & 3	Open
133MHz	66MHz	2x	Closed	Closed	Open	2 & 3	Open
150MHz	60MHz	2.5x	Closed	Open	Closed	2 & 3	Closed
166MHz	66MHz	2.5x	Closed	Closed	Open	2 & 3	Closed

Note: Pins designated should be in the closed position.

CPU TYPE SELECTION	
Type	W14
VR	Open
VRE	Closed

MISCELLANEOUS TECHNICAL NOTE
If J44 is used, PC1 slot must be left empty.