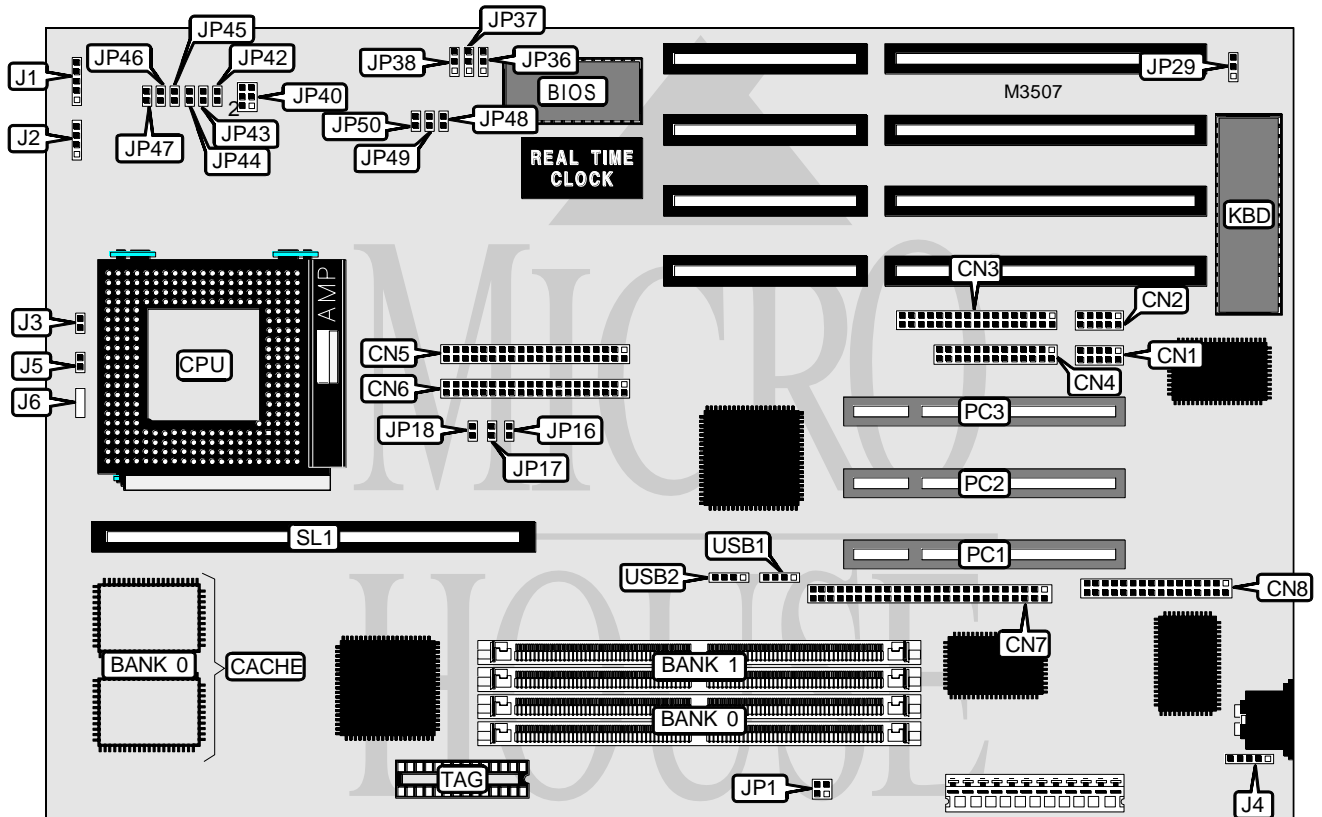


M TECHNOLOGY, INC. R528 PENTIUM PCI/ISA

| | |
|-------------------------------|--|
| Processor | CX M1/Pentium |
| Processor Speed | 75/90/100/120/133/150/166/180/200MHz |
| Chip Set | Intel |
| Video Chip Set | None |
| Maximum Onboard Memory | 512MB (EDO supported) |
| Maximum Video Memory | None |
| Cache | 256/512KB |
| BIOS | Award |
| Dimensions | 330mm x 218mm |
| I/O Options | 32-bit PCI slots (3), floppy drive interface, green PC connector, IDE interfaces (2), SCSI connector, parallel port, PS/2 mouse interface, serial ports (2), cache slot, USB connectors (2), sound adapter connector |
| NPU Options | None |



Continued on next page . . .

M TECHNOLOGY, INC.

R528 PENTIUM PCI/ISA

... continued from previous page

| CONNECTIONS | | | |
|-------------------------|----------|----------------------|-----------|
| Purpose | Location | Purpose | Location |
| Serial port 2 | CN1 | Reset switch | J3 |
| Serial port 1 | CN2 | PS/2 mouse interface | J4 |
| Floppy drive interface | CN3 | Green PC connector | J5 |
| Parallel port | CN4 | IDE interface LED | J6 |
| IDE interface 1 | CN5 | SCSI interface LED | JP1 |
| IDE interface 2 | CN6 | 32-bit PCI slots | PC1 - PC3 |
| SCSI interface | CN7 | Cache slot | SL1 |
| Sound adapter connector | CN8 | USB connector 1 | USB1 |
| Power LED & keylock | J1 | USB connector 2 | USB2 |
| Speaker | J2 | | |

Note: CN7 & CN8 are optional and may not be present on all boards.

| USER CONFIGURABLE SETTINGS | | |
|--------------------------------|-------|-------------------|
| Function | Label | Position |
| í PS/2 mouse enabled | JP29 | Pins 1 & 2 closed |
| PS/2 mouse disabled | JP29 | Pins 2 & 3 closed |
| í CMOS memory normal operation | JP38 | Pins 1 & 2 closed |
| CMOS memory clear | JP38 | Pins 2 & 3 closed |

| DRAM CONFIGURATION | | |
|--------------------|---------------|---------------|
| Size | Bank 0 | Bank 1 |
| 4MB | (2) 512K x 36 | None |
| 4MB | (2) 256K x 36 | (2) 256K x 36 |
| 6MB | (2) 512K x 36 | (2) 256K x 36 |
| 6MB | (2) 256K x 36 | (2) 512K x 36 |
| 8MB | (2) 1M x 36 | None |
| 8MB | (2) 512K x 36 | (2) 512K x 36 |
| 10MB | (2) 1M x 36 | (2) 256K x 36 |
| 12MB | (2) 512K x 36 | (2) 1M x 36 |
| 16MB | (2) 2M x 36 | None |
| 16MB | (2) 1M x 36 | (2) 1M x 36 |
| 18MB | (2) 2M x 36 | (2) 256K x 36 |
| 20MB | (2) 512K x 36 | (2) 2M x 36 |
| 24MB | (2) 1M x 36 | (2) 2M x 36 |
| 32MB | (2) 4M x 36 | None |
| 32MB | (2) 2M x 36 | (2) 2M x 36 |

Continued on next page...

M TECHNOLOGY, INC.

R528 PENTIUM PCI/ISA

... continued from previous page

| DRAM CONFIGURATION (CON'T) | | |
|----------------------------|---------------|---------------|
| Size | Bank 0 | Bank 1 |
| 34MB | (2) 256K x 36 | (2) 4M x 36 |
| 36MB | (2) 4M x 36 | (2) 512K x 36 |
| 40MB | (2) 1M x 36 | (2) 4M x 36 |
| 48MB | (2) 2M x 36 | (2) 4M x 36 |
| 64MB | (2) 8M x 36 | None |
| 64MB | (2) 4M x 36 | (2) 4M x 36 |
| 66MB | (2) 256K x 36 | (2) 8M x 36 |
| 68MB | (2) 8M x 36 | (2) 512K x 36 |
| 72MB | (2) 1M x 36 | (2) 8M x 36 |
| 80MB | (2) 8M x 36 | (2) 2M x 36 |
| 96MB | (2) 4M x 36 | (2) 8M x 36 |
| 128MB | (2) 8M x 36 | (2) 8M x 36 |
| 136MB | (2) 16M x 36 | (2) 1M x 36 |
| 144MB | (2) 16M x 36 | (2) 2M x 36 |
| 160MB | (2) 16M x 36 | (2) 4M x 36 |
| 192MB | (2) 16M x 36 | (2) 8M x 36 |
| 256MB | (2) 16M x 36 | (2) 16M x 36 |
| 264MB | (2) 32M x 36 | (2) 1M x 36 |
| 272MB | (2) 32M x 36 | (2) 2M x 36 |
| 288MB | (2) 32M x 36 | (2) 4M x 36 |
| 320MB | (2) 32M x 36 | (2) 8M x 36 |
| 384MB | (2) 32M x 36 | (2) 16M x 36 |
| 512MB | (2) 32M x 36 | (2) 32M x 36 |

Note: Board accepts EDO memory. Banks 0 & 1 are interchangeable.

| CACHE CONFIGURATION | | | |
|---------------------|--------------|-------------|------------------------|
| Size | Bank 0 | TAG | SL1 |
| 256KB | (2) 32K x 32 | (1) 32K x 8 | Not installed |
| 512KB | (2) 32K x 32 | (1) 32K x 8 | 256KB module installed |

| CPU SPEED SELECTION (CYRIX) | | | | | | | | |
|-----------------------------|-------------|------------|--------|--------|--------|------|--------|--------|
| CPU speed | Clock speed | Multiplier | JP16 | JP17 | JP18 | JP42 | JP43 | JP44 |
| 120MHz | 50MHz | 2x | Open | Closed | Open | Open | Closed | Open |
| 133MHz | 55MHz | 2x | Closed | Closed | Closed | Open | Closed | Open |
| 150MHz | 60MHz | 2x | Closed | Open | Open | Open | Closed | Closed |
| 166MHz | 66MHz | 2x | Open | Open | Open | Open | Closed | Open |

Continued on next page. . .

M TECHNOLOGY, INC.
R528 PENTIUM PCI/ISA

... continued from previous page

| CPU SPEED SELECTION (INTEL) | | | | | | | | |
|-----------------------------|-------------|------------|--------|--------|------|--------|--------|--------|
| CPU speed | Clock speed | Multiplier | JP16 | JP17 | JP18 | JP42 | JP43 | JP44 |
| 75MHz | 50MHz | 1.5x | Open | Closed | Open | Open | Open | Open |
| 90MHz | 60MHz | 1.5x | Closed | Open | Open | Open | Open | Closed |
| 100MHz | 66MHz | 1.5x | Open | Open | Open | Open | Open | Open |
| 120MHz | 60MHz | 2x | Closed | Open | Open | Open | Closed | Closed |
| 133MHz | 66MHz | 2x | Open | Open | Open | Open | Closed | Open |
| 150MHz | 60MHz | 2.5x | Closed | Open | Open | Closed | Closed | Closed |
| 166MHz | 66MHz | 2.5x | Open | Open | Open | Closed | Closed | Open |
| 180MHz | 60MHz | 3x | Closed | Open | Open | Closed | Open | Closed |
| 200MHz | 66MHz | 3x | Open | Open | Open | Closed | Open | Open |

| CPU VOLTAGE SELECTION | | | | | |
|-----------------------|-----------|-----------|---------------------|--------|--------|
| CPU type | Voltage 1 | Voltage 2 | JP40 | JP45 | JP46 |
| P54C/CX M1 | 3.3v | N/A | 1 & 2, 3 & 4, 5 & 6 | Closed | Open |
| P54C/CX M1 | 3.45v | N/A | 1 & 2, 3 & 4, 5 & 6 | Open | Closed |
| P54C/CX M1 | 3.5v | N/A | 1 & 2, 3 & 4, 5 & 6 | Open | Open |
| P55C | 3.3v | 2.5v | Open | Closed | Open |
| P55C | 3.45v | 2.7v | Open | Open | Closed |
| P55C | 3.5v | 2.8v | Open | Open | Open |

Note: Pins designated should be in the closed position.

| CPU VOLTAGE SELECTION (CON'T) | | | | | | |
|-------------------------------|-----------|-----------|--------|--------|--------|--------|
| CPU type | Voltage 1 | Voltage 2 | JP47 | JP48 | JP49 | JP50 |
| P54C/CX M1 | 3.3v | N/A | Open | N/A | N/A | N/A |
| P54C/CX M1 | 3.45v | N/A | Open | N/A | N/A | N/A |
| P54C/CX M1 | 3.5v | N/A | Closed | N/A | N/A | N/A |
| P55C | 3.3v | 2.5v | Open | Closed | Open | Open |
| P55C | 3.45v | 2.7v | Open | Open | Closed | Open |
| P55C | 3.5v | 2.8v | Closed | Open | Open | Closed |

| FLASH BIOS SELECTION | | |
|----------------------|-------------------|-------------------|
| Setting | JP36 | JP37 |
| Flash mode | Pins 1 & 2 closed | Pins 1 & 2 closed |
| +5v flash BIOS | Pins 2 & 3 closed | Pins 1 & 2 closed |
| +12v flash BIOS | Pins 2 & 3 closed | Pins 2 & 3 closed |