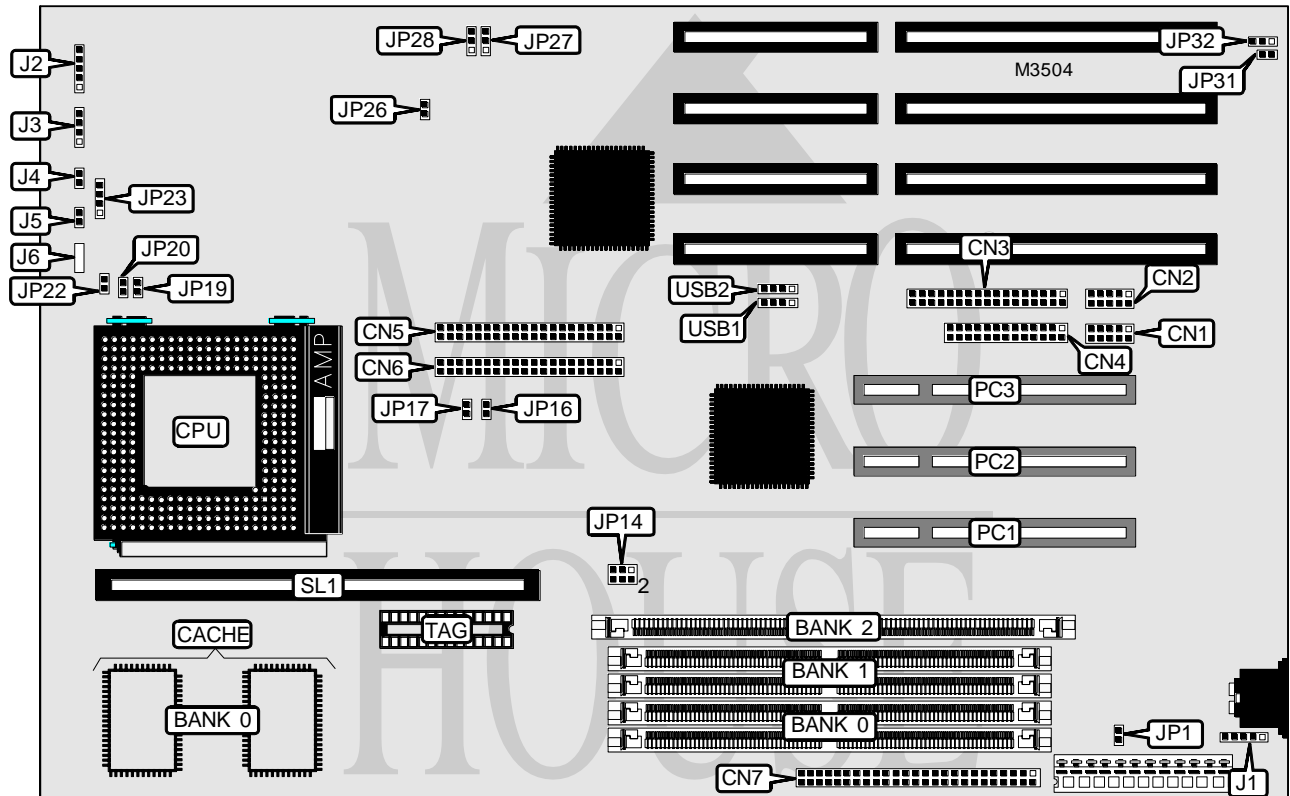


M TECHNOLOGY, INC. R529 PENTIUM PCI/ISA

Processor	CX M1/Pentium
Processor Speed	75/90/100/120/133/150/166/180/200MHz
Chip Set	Intel
Video Chip Set	None
Maximum Onboard Memory	128MB (EDO supported)
Maximum Video Memory	None
Cache	256/512KB
BIOS	Award
Dimensions	330mm x 218mm
I/O Options	32-bit PCI slots (3), floppy drive interface, green PC connector, IDE interfaces (2), SCSI interface, parallel port, PS/2 mouse interface, serial ports (2), cache slot, USB connectors (2)
NPU Options	None



Continued on next page...

M TECHNOLOGY, INC.

R529 PENTIUM PCI/ISA

... continued from previous page

CONNECTIONS			
Purpose	Location	Purpose	Location
Serial port 1	CN1	Speaker	J3
Serial port 2	CN2	Reset switch	J4
Floppy drive interface	CN3	Green PC connector	J5
Parallel port	CN4	IDE interface LED	J6
IDE interface 1	CN5	SCSI interface LED	JP1
IDE interface 2	CN6	32-bit PCI slots	PC1 - PC3
SCSI interface	CN7	Cache slot	SL1
PS/2 mouse interface	J1	USB connector 1	USB1
Power LED & keylock	J2	USB connector 2	USB2

USER CONFIGURABLE SETTINGS		
Function	Label	Position
í CMOS memory normal operation	JP26	Open
CMOS memory clear	JP26	Closed
Monitor type select CGA	JP31	Closed
Monitor type select monochrome/EGA	JP31	Open
í PS/2 mouse enabled	JP32	Pins 1 & 2 closed
PS/2 mouse disabled	JP32	Pins 2 & 3 closed

DRAM CONFIGURATION		
Size	Bank 0	Bank 1
2MB	(2) 256K x 36	None
4MB	(2) 512K x 36	None
4MB	(2) 256K x 36	(2) 256K x 36
6MB	(2) 512K x 36	(2) 256K x 36
8MB	(2) 1M x 36	None
8MB	(2) 512K x 36	(2) 512K x 36
10MB	(2) 1M x 36	(2) 256K x 36
12MB	(2) 512K x 36	(2) 1M x 36
16MB	(2) 2M x 36	None
16MB	(2) 1M x 36	(2) 1M x 36
18MB	(2) 2M x 36	(2) 256K x 36
20MB	(2) 512K x 36	(2) 2M x 36
24MB	(2) 1M x 36	(2) 2M x 36
32MB	(2) 4M x 36	None
32MB	(2) 2M x 36	(2) 2M x 36
34MB	(2) 4M x 36	(2) 256K x 36
36MB	(2) 512K x 36	(2) 4M x 36
40MB	(2) 1M x 36	(2) 4M x 36

Continued on next page. . .

M TECHNOLOGY, INC.

R529 PENTIUM PCI/ISA

... continued from previous page

DRAM CONFIGURATION (CON'T)		
Size	Bank 0	Bank 1
48MB	(2) 4M x 36	(2) 2M x 36
64MB	(2) 8M x 36	None
64MB	(2) 4M x 36	(2) 4M x 36
66MB	(2) 256K x 36	(2) 8M x 36
68MB	(2) 8M x 36	(2) 512K x 36
72MB	(2) 1M x 36	(2) 8M x 36
80MB	(2) 8M x 36	(2) 2M x 36
96MB	(2) 4M x 36	(2) 8M x 36
128MB	(2) 8M x 36	(2) 8M x 36

Note: Board accepts EDO memory. Bank 2 accepts a SDRAM module. If bank 2 is used, banks 0 & 1 must be left empty. The size of the SDRAM modules are unidentified. Banks 0 & 1 are interchangeable.

SDRAM VOLTAGE CONFIGURATION	
Size	JP14
3.3v	Pins 3 & 5, 4 & 6 closed
5v	Pins 1 & 3, 2 & 4 closed

CACHE CONFIGURATION			
Size	Bank 0	TAG	SL1
256KB	(2) 32K x 32	(1) 32K x 8	Not installed
512KB	(2) 32K x 32	(1) 32K x 8	256KB module installed

CPU SPEED SELECTION (CYRIX)							
CPU speed	Clock speed	Multiplier	JP16	JP17	JP19	JP20	JP22
120MHz	50MHz	2x	Open	Open	Open	Closed	Open
133MHz	55MHz	2x	Closed	Closed	Open	Closed	Open
150MHz	60MHz	2x	Open	Closed	Open	Closed	Closed
166MHz	66MHz	2x	Closed	Open	Open	Closed	Open

CPU SPEED SELECTION (INTEL)							
CPU speed	Clock speed	Multiplier	JP16	JP17	JP19	JP20	JP22
75MHz	50MHz	1.5x	Open	Open	Open	Open	Open
90MHz	60MHz	1.5x	Open	Closed	Open	Open	Closed
100MHz	66MHz	1.5x	Closed	Open	Open	Open	Open
120MHz	60MHz	2x	Open	Closed	Open	Closed	Closed
133MHz	66MHz	2x	Closed	Open	Open	Closed	Open
150MHz	60MHz	2.5x	Open	Closed	Closed	Closed	Closed
166MHz	66MHz	2.5x	Closed	Open	Closed	Closed	Open
180MHz	60MHz	3x	Open	Closed	Closed	Open	Closed
200MHz	66MHz	3x	Closed	Open	Closed	Open	Open

Continued on next page...

M TECHNOLOGY, INC.
R529 PENTIUM PCI/ISA*... continued from previous page*

CPU VOLTAGE SELECTION	
Voltage	JP23
3.3v	Pins 1 & 2, 3 & 4 closed
3.4v	Pins 1 & 2 closed
3.5v	Open

FLASH BIOS SELECTION		
Setting	JP27	JP28
Flash mode	Pins 1 & 2 closed	Pins 1 & 2 closed
+5v flash BIOS	Pins 1 & 2 closed	Pins 2 & 3 closed
+12v flash BIOS	Pins 2 & 3 closed	Pins 2 & 3 closed