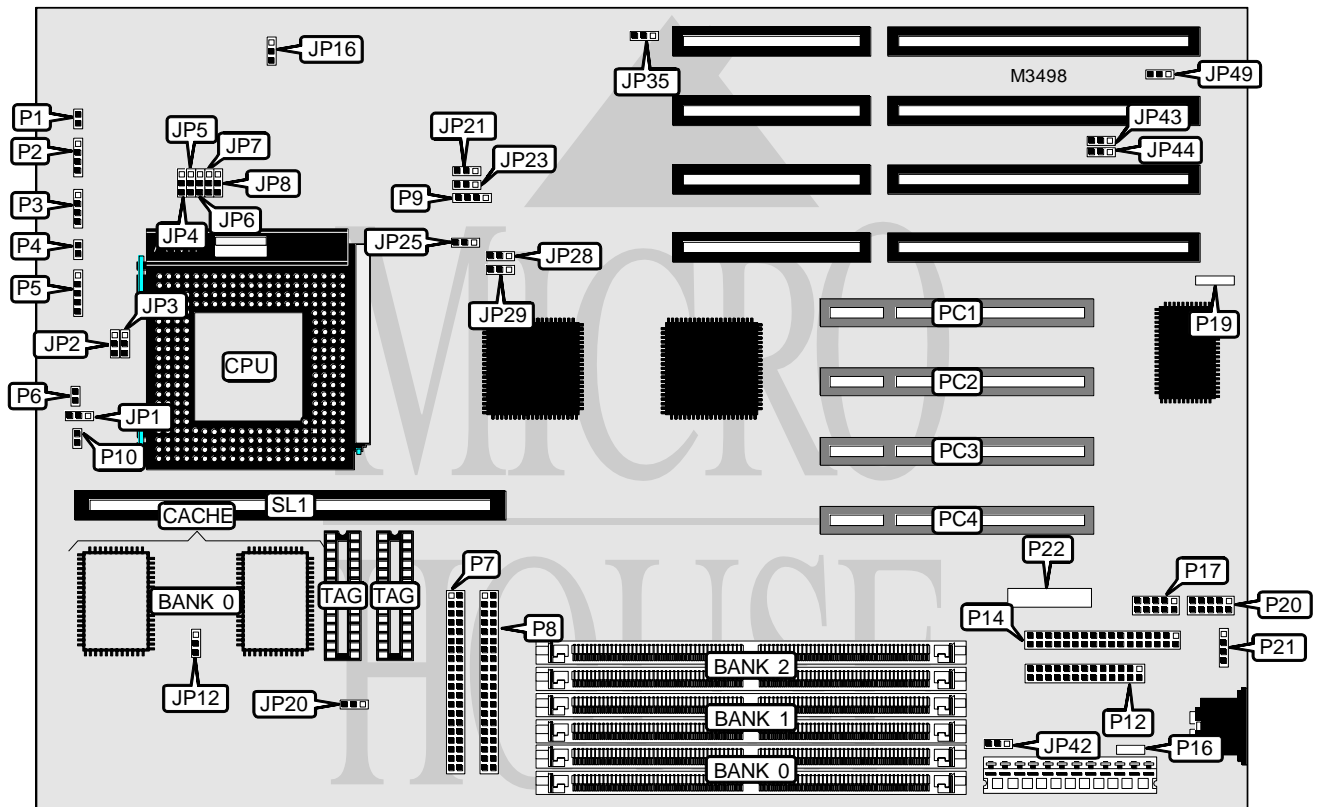


OCEAN INFORMATION SYSTEMS, INC. RHINO 9 (VER. 1.0)

| | |
|-------------------------------|---|
| Processor | CX M1/Pentium |
| Processor Speed | 75/90/100/120/133/150/166MHz |
| Chip Set | Intel |
| Video Chip Set | None |
| Maximum Onboard Memory | 384MB (EDO supported) |
| Maximum Video Memory | None |
| Cache | 256/512KB |
| BIOS | Award |
| Dimensions | 330mm x 218mm |
| I/O Options | 32-bit PCI slots (4), floppy drive interface, green PC connector, IDE interfaces (2), parallel port, PS/2 mouse interface, serial ports (2), cache slot, IR connector |
| NPU Options | None |



Continued on next page...

OCEAN INFORMATION SYSTEMS, INC.

RHINO 9 (VER. 1.0)

... continued from previous page

| CONNECTIONS | | | |
|---------------------|----------|------------------------|-----------|
| Purpose | Location | Purpose | Location |
| Turbo LED | P1 | Green PC connector | P10 |
| Speaker | P2 | Parallel port | P12 |
| IDE interface LED | P3 | Floppy drive interface | P14 |
| Reset switch | P4 | Serial port 1 | P17 |
| Power LED & keylock | P5 | IR connector | P19 |
| Chassis fan power | P6 | Serial port 2 | P20 |
| IDE interface 2 | P7 | PS/2 mouse interface | P21 |
| IDE interface 1 | P8 | 32-bit PCI slots | PC1 - PC4 |
| External battery | P9 | Cache slot | SL1 |

| USER CONFIGURABLE SETTINGS | | |
|--|-------|-------------------|
| Function | Label | Position |
| í Fan voltage select +5v | JP1 | Pins 1 & 2 closed |
| Fan voltage select +12v | JP1 | Pins 2 & 3 closed |
| í Factory configured - do not alter | JP20 | Pins 2 & 3 closed |
| í CMOS memory normal operation | JP21 | Pins 1 & 2 closed |
| CMOS memory clear | JP21 | Pins 2 & 3 closed |
| í Battery type select internal | JP23 | Pins 1 & 2 closed |
| Battery type select external | JP23 | Pins 2 & 3 closed |
| í Factory configured - do not alter | JP35 | Pins 1 & 2 closed |
| í Power good signal detect from power supply | JP42 | Pins 1 & 2 closed |
| Power good signal detect from board | JP42 | Pins 2 & 3 closed |
| Jumper information unavailable | P16 | Unidentified |
| Jumper information unavailable | P22 | Unidentified |

| DRAM CONFIGURATION | | | |
|--------------------|---------------|---------------|---------------|
| Size | Bank 0 | Bank 1 | Bank 2 |
| 4MB | (2) 512K x 36 | None | None |
| 8MB | (2) 1M x 36 | None | None |
| 8MB | (2) 512K x 36 | (2) 512K x 36 | None |
| 12MB | (2) 512K x 36 | (2) 1M x 36 | None |
| 12MB | (2) 1M x 36 | (2) 512K x 36 | None |
| 12MB | (2) 512K x 36 | (2) 512K x 36 | (2) 512K x 36 |
| 16MB | (2) 2M x 36 | None | None |
| 16MB | (2) 1M x 36 | (2) 1M x 36 | None |
| 16MB | (2) 512K x 36 | (2) 512K x 36 | (2) 1M x 36 |
| 20MB | (2) 512K x 36 | (2) 2M x 36 | None |
| 24MB | (2) 1M x 36 | (2) 2M x 36 | None |
| 24MB | (2) 512K x 36 | (2) 512K x 36 | (2) 2M x 36 |
| 32MB | (2) 4M x 36 | None | None |
| 36MB | (2) 512K x 36 | (2) 4M x 36 | None |
| 40MB | (2) 1M x 36 | (2) 4M x 36 | None |
| 40MB | (2) 512K x 36 | (2) 512K x 36 | (2) 4M x 36 |

Continued on next page...

OCEAN INFORMATION SYSTEMS, INC.

RHINO 9 (VER. 1.0)

... continued from previous page

| DRAM CONFIGURATION (CON'T) | | | |
|----------------------------|---------------|---------------|---------------|
| Size | Bank 0 | Bank 1 | Bank 2 |
| 64MB | (2) 8M x 36 | None | None |
| 68MB | (2) 512K x 36 | (2) 8M x 36 | None |
| 72MB | (2) 1M x 36 | (2) 8M x 36 | None |
| 72MB | (2) 512K x 36 | (2) 512K x 36 | (2) 8M x 36 |
| 128MB | (2) 16M x 36 | None | None |
| 132MB | (2) 512K x 36 | (2) 16M x 36 | None |
| 132MB | (2) 16M x 36 | (2) 512K x 36 | None |
| 136MB | (2) 16M x 36 | (2) 1M x 36 | None |
| 136MB | (2) 512K x 36 | (2) 512K x 36 | (2) 16M x 36 |
| 144MB | (2) 16M x 36 | (2) 2M x 36 | None |
| 160MB | (2) 16M x 36 | (2) 4M x 36 | None |
| 192MB | (2) 16M x 36 | (2) 8M x 36 | None |
| 256MB | (2) 16M x 36 | (2) 16M x 36 | None |
| 260MB | (2) 16M x 36 | (2) 16M x 36 | (2) 512K x 36 |
| 264MB | (2) 16M x 36 | (2) 16M x 36 | (2) 1M x 36 |
| 272MB | (2) 16M x 36 | (2) 16M x 36 | (2) 2M x 36 |
| 288MB | (2) 16M x 36 | (2) 16M x 36 | (2) 4M x 36 |
| 320MB | (2) 16M x 36 | (2) 16M x 36 | (2) 8M x 36 |
| 384MB | (2) 16M x 36 | (2) 16M x 36 | (2) 16M x 36 |

| CACHE CONFIGURATION | | | |
|---------------------|--------------|----------------|------------------------|
| Size | Bank 0 | TAG | SL1 |
| 256KB (A) | (2) 32K x 32 | (2) 8K/32K x 8 | Not installed |
| 256KB (B) | None | (2) 8K/32K x 8 | 256KB module installed |
| 512KB | (2) 32K x 32 | (2) 32K x 8 | 256KB module installed |

| CACHE JUMPER CONFIGURATION | | | | | |
|----------------------------|-------|-------|-------|-------|-------|
| Size | JP4 | JP5 | JP6 | JP7 | JP12 |
| None | 1 & 2 | 1 & 2 | 1 & 2 | 1 & 2 | 1 & 2 |
| 256KB (A, B) | 2 & 3 | 1 & 2 | 1 & 2 | 1 & 2 | 1 & 2 |
| 512KB | 1 & 2 | 2 & 3 | 2 & 3 | 2 & 3 | 2 & 3 |

Note: Pins designated should be in the closed position.

| CPU SPEED SELECTION (CYRIX) | | | | | | | |
|-----------------------------|-------------|-------|-------|-------|-------|-------|-------|
| CPU speed | Clock speed | JP2 | JP3 | JP8 | JP25 | JP28 | JP29 |
| 100MHz | 50MHz | 2 & 3 | 1 & 2 | 1 & 2 | 1 & 2 | 2 & 3 | 2 & 3 |
| 120MHz | 60MHz | 2 & 3 | 1 & 2 | 1 & 2 | 2 & 3 | 1 & 2 | 2 & 3 |
| 133MHz | 66MHz | 2 & 3 | 1 & 2 | 2 & 3 | 2 & 3 | 2 & 3 | 1 & 2 |

Note: Pins designated should be in the closed position.

Continued on next page...

OCEAN INFORMATION SYSTEMS, INC.
RHINO 9 (VER. 1.0)

... continued from previous page

| CPU SPEED SELECTION (PENTIUM) | | | | | | | | |
|-------------------------------|-------------|------------|-------|-------|-------|-------|-------|-------|
| CPU speed | Clock speed | Multiplier | JP2 | JP3 | JP8 | JP25 | JP28 | JP29 |
| 75MHz | 50MHz | 1.5x | 1 & 2 | 1 & 2 | 1 & 2 | 1 & 2 | 2 & 3 | 2 & 3 |
| 90MHz | 60MHz | 1.5x | 1 & 2 | 1 & 2 | 1 & 2 | 2 & 3 | 1 & 2 | 2 & 3 |
| 100MHz | 66MHz | 1.5x | 1 & 2 | 1 & 2 | 2 & 3 | 2 & 3 | 2 & 3 | 1 & 2 |
| 120MHz | 60MHz | 2x | 2 & 3 | 1 & 2 | 1 & 2 | 2 & 3 | 1 & 2 | 2 & 3 |
| 133MHz | 66MHz | 2x | 2 & 3 | 1 & 2 | 2 & 3 | 2 & 3 | 2 & 3 | 1 & 2 |
| 150MHz | 60MHz | 2.5x | 2 & 3 | 2 & 3 | 1 & 2 | 2 & 3 | 1 & 2 | 2 & 3 |
| 166MHz | 66MHz | 2.5x | 2 & 3 | 2 & 3 | 2 & 3 | 2 & 3 | 2 & 3 | 1 & 2 |

Note: Pins designated should be in the closed position.

| CPU VOLTAGE SELECTION | |
|-----------------------|-------------------|
| Voltage | JP16 |
| 2.5v | Pins 2 & 3 closed |
| 3.3v | Pins 1 & 2 closed |

| PS/2 MOUSE SELECTION | | | |
|----------------------|-------------------|-------------------|-------------------|
| Setting | JP43 | JP44 | JP49 |
| í Enabled | Pins 2 & 3 closed | Pins 2 & 3 closed | Pins 1 & 2 closed |
| Disabled | Pins 1 & 2 closed | Pins 1 & 2 closed | Pins 2 & 3 closed |