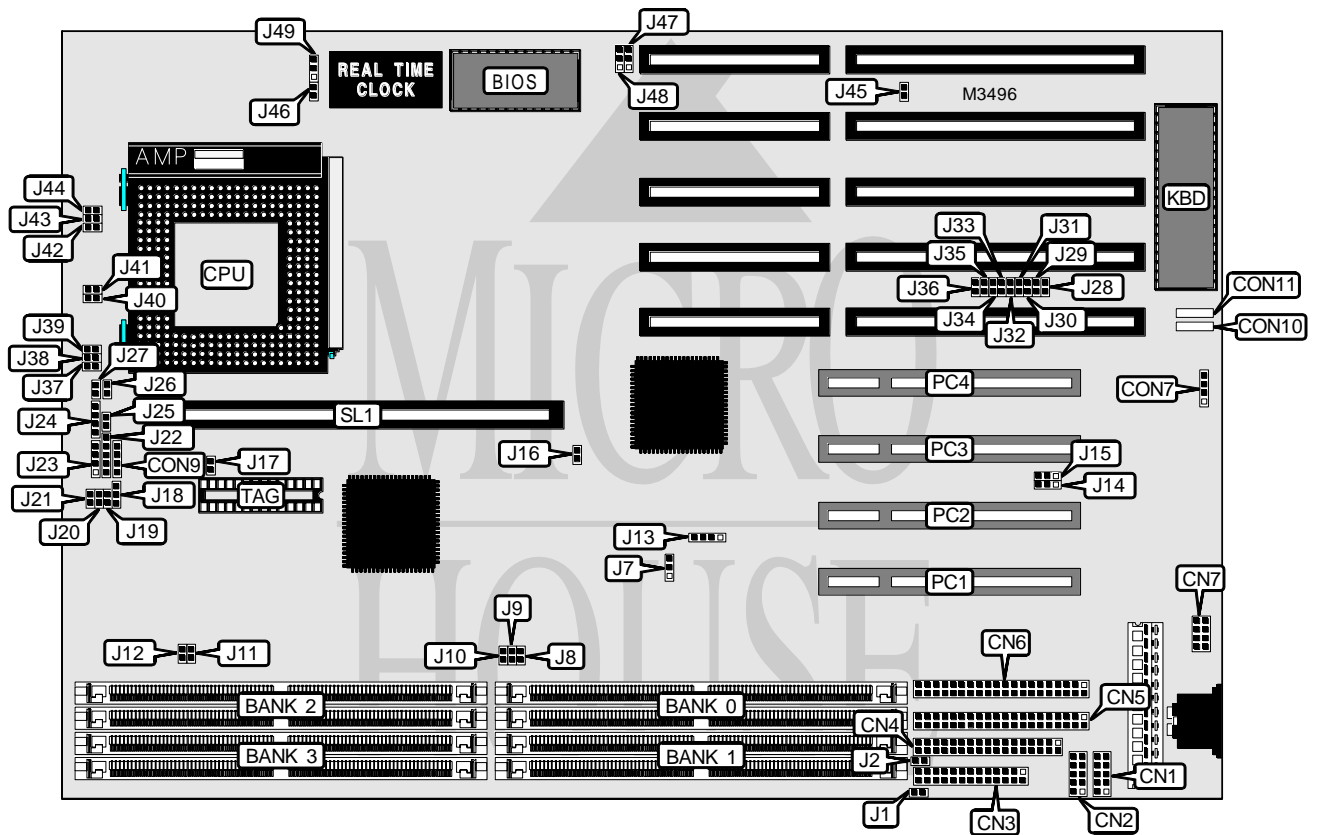


TYAN COMPUTER CORPORATION

S1562S (REV. 1.1)

| | |
|-------------------------------|--|
| Processor | CX M1/Pentium |
| Processor Speed | 75/90/100/120/133/150/166/200MHz |
| Chip Set | Intel |
| Video Chip Set | None |
| Maximum Onboard Memory | 512MB DRAM (EDO supported) |
| Maximum Video Memory | None |
| Cache | 256/512KB |
| BIOS | AMI/Award |
| Dimensions | 330mm x 218mm |
| I/O Options | 32-bit PCI slots (4), floppy drive interface, IDE interfaces (2), parallel port, PS/2 mouse interface, serial ports (2), cache slot, IR connectors (2) |
| NPU Options | None |



Continued on next page . . .

TYAN COMPUTER CORPORATION

S1562S (REV. 1.1)

... continued from previous page

| CONNECTIONS | | | |
|------------------------|----------|---------------------|-----------|
| Purpose | Location | Purpose | Location |
| Serial port 2 | CN1 | Power LED & keylock | J22 |
| Serial port 1 | CN2 | Speaker | J23 |
| Parallel port | CN3 | IDE interface LED | J24 |
| Floppy drive interface | CN4 | Turbo LED | J25 |
| IDE interface 1/2 | CN5 | Turbo switch | J26 |
| IDE interface 1/2 | CN6 | Reset switch | J27 |
| PS/2 mouse interface | CN7 | 32-bit PCI slots | PC1 - PC4 |
| IR connector | CON7 | Cache slot | SL1 |
| IR connector | CON9 | | |

| USER CONFIGURABLE SETTINGS | | |
|-------------------------------------|-------|-------------------|
| Function | Label | Position |
| Jumper information unavailable | CON10 | Unidentified |
| Jumper information unavailable | CON11 | Unidentified |
| í Factory configured - do not alter | J7 | Pins 1 & 2 closed |
| Jumper information unavailable | J16 | Unidentified |
| í Factory configured - do not alter | J17 | Open |
| í Factory configured - do not alter | J18 | Pins 2 & 3 closed |
| Jumper information unavailable | J21 | Unidentified |
| Jumper information unavailable | J28 | Unidentified |
| Jumper information unavailable | J29 | Unidentified |
| Jumper information unavailable | J30 | Unidentified |
| Jumper information unavailable | J31 | Unidentified |
| Jumper information unavailable | J32 | Unidentified |
| Jumper information unavailable | J33 | Unidentified |
| Jumper information unavailable | J34 | Unidentified |
| Jumper information unavailable | J35 | Unidentified |
| Jumper information unavailable | J36 | Unidentified |
| í Factory configured - do not alter | J40 | Closed |
| í Factory configured - do not alter | J41 | Closed |
| Jumper information unavailable | J42 | Unidentified |
| Jumper information unavailable | J43 | Unidentified |
| Jumper information unavailable | J44 | Unidentified |
| í Factory configured - do not alter | J45 | Open |
| í CMOS memory normal operation | J46 | Open |
| CMOS memory clear | J46 | Closed |
| í Factory configured - do not alter | J49 | Pins 2 & 3 closed |

Continued on next page...

TYAN COMPUTER CORPORATION

S1562S (REV. 1.1)

... continued from previous page

| DRAM CONFIGURATION | | | | |
|--------------------|---------------|---------------|---------------|---------------|
| Size | Bank 0 | Bank 1 | Bank 2 | Bank 3 |
| 8MB | (2) 1M x 32 | None | None | None |
| 8MB | (2) 512K x 32 | (2) 256K x 32 | (2) 256K x 32 | None |
| 8MB | (2) 512K x 32 | (2) 512K x 32 | None | None |
| 8MB | (2) 256K x 32 | (2) 256K x 32 | (2) 256K x 32 | (2) 256K x 32 |
| 10MB | (2) 1M x 32 | (2) 256K x 32 | None | None |
| 10MB | (2) 512K x 32 | (2) 256K x 32 | (2) 256K x 32 | (2) 256K x 32 |
| 10MB | (2) 256K x 32 | (2) 512K x 32 | (2) 512K x 32 | None |
| 10MB | (2) 256K x 32 | (2) 1M x 32 | None | None |
| 12MB | (2) 1M x 32 | (2) 256K x 32 | (2) 256K x 32 | None |
| 12MB | (2) 1M x 32 | (2) 512K x 32 | None | None |
| 12MB | (2) 512K x 32 | (2) 512K x 32 | (2) 512K x 32 | None |
| 12MB | (2) 512K x 32 | (2) 1M x 32 | None | None |
| 14MB | (2) 1M x 32 | (2) 256K x 32 | (2) 256K x 32 | (2) 256K x 32 |
| 14MB | (2) 256K x 32 | (2) 512K x 32 | (2) 512K x 32 | (2) 512K x 32 |
| 16MB | (2) 2M x 32 | None | None | None |
| 16MB | (2) 1M x 32 | (2) 512K x 32 | (2) 512K x 32 | None |
| 16MB | (2) 1M x 32 | (2) 1M x 32 | None | None |
| 16MB | (2) 512K x 32 | (2) 512K x 32 | (2) 512K x 32 | (2) 512K x 32 |
| 18MB | (2) 2M x 32 | (2) 256K x 32 | None | None |
| 18MB | (2) 256K x 32 | (2) 1M x 32 | (2) 1M x 32 | None |
| 18MB | (2) 256K x 32 | (2) 2M x 32 | None | None |
| 20MB | (2) 2M x 32 | (2) 256K x 32 | (2) 256K x 32 | None |
| 20MB | (2) 2M x 32 | (2) 512K x 32 | None | None |
| 20MB | (2) 1M x 32 | (2) 512K x 32 | (2) 512K x 32 | (2) 512K x 32 |
| 20MB | (2) 512K x 32 | (2) 1M x 32 | (2) 1M x 32 | None |
| 20MB | (2) 512K x 32 | (2) 2M x 32 | None | None |
| 22MB | (2) 2M x 32 | (2) 256K x 32 | (2) 256K x 32 | (2) 256K x 32 |
| 24MB | (2) 2M x 32 | (2) 512K x 32 | (2) 512K x 32 | None |
| 24MB | (2) 2M x 32 | (2) 1M x 32 | None | None |
| 24MB | (2) 1M x 32 | (2) 1M x 32 | (2) 1M x 32 | None |
| 24MB | (2) 1M x 32 | (2) 2M x 32 | None | None |
| 26MB | (2) 256K x 32 | (2) 1M x 32 | (2) 1M x 32 | (2) 1M x 32 |
| 28MB | (2) 2M x 32 | (2) 512K x 32 | (2) 512K x 32 | (2) 512K x 32 |
| 28MB | (2) 512K x 32 | (2) 1M x 32 | (2) 1M x 32 | (2) 1M x 32 |
| 32MB | (2) 4M x 32 | None | None | None |
| 32MB | (2) 2M x 32 | (2) 1M x 32 | (2) 1M x 32 | None |

Continued on next page...

TYAN COMPUTER CORPORATION
S1562S (REV. 1.1)

... continued from previous page

| DRAM CONFIGURATION (CON'T) | | | | |
|----------------------------|---------------|---------------|---------------|---------------|
| Size | Bank 0 | Bank 1 | Bank 2 | Bank 3 |
| 32MB | (2) 2M x 32 | (2) 2M x 32 | None | None |
| 32MB | (2) 1M x 32 | (2) 1M x 32 | (2) 1M x 32 | (2) 1M x 32 |
| 34MB | (2) 4M x 32 | (2) 256K x 32 | None | None |
| 34MB | (2) 256K x 32 | (2) 2M x 32 | (2) 2M x 32 | None |
| 34MB | (2) 256K x 32 | (2) 4M x 32 | None | None |
| 36MB | (2) 4M x 32 | (2) 256K x 32 | (2) 256K x 32 | None |
| 36MB | (2) 4M x 32 | (2) 512K x 32 | None | None |
| 36MB | (2) 512K x 32 | (2) 2M x 32 | (2) 2M x 32 | None |
| 36MB | (2) 512K x 32 | (2) 4M x 32 | None | None |
| 38MB | (2) 4M x 32 | (2) 256K x 32 | (2) 256K x 32 | (2) 256K x 32 |
| 40MB | (2) 4M x 32 | (2) 512K x 32 | (2) 512K x 32 | None |
| 40MB | (2) 4M x 32 | (2) 1M x 32 | None | None |
| 40MB | (2) 2M x 32 | (2) 1M x 32 | (2) 1M x 32 | (2) 1M x 32 |
| 40MB | (2) 1M x 32 | (2) 2M x 32 | (2) 2M x 32 | None |
| 40MB | (2) 1M x 32 | (2) 4M x 32 | None | None |
| 44MB | (2) 4M x 32 | (2) 512K x 32 | (2) 512K x 32 | (2) 512K x 32 |
| 48MB | (2) 4M x 32 | (2) 1M x 32 | (2) 1M x 32 | None |
| 48MB | (2) 4M x 32 | (2) 2M x 32 | None | None |
| 48MB | (2) 2M x 32 | (2) 2M x 32 | (2) 2M x 32 | None |
| 48MB | (2) 2M x 32 | (2) 4M x 32 | None | None |
| 50MB | (2) 256K x 32 | (2) 2M x 32 | (2) 2M x 32 | (2) 2M x 32 |
| 52MB | (2) 512K x 32 | (2) 2M x 32 | (2) 2M x 32 | (2) 2M x 32 |
| 56MB | (2) 4M x 32 | (2) 1M x 32 | (2) 1M x 32 | (2) 1M x 32 |
| 56MB | (2) 1M x 32 | (2) 2M x 32 | (2) 2M x 32 | (2) 2M x 32 |
| 64MB | (2) 8M x 32 | None | None | None |
| 64MB | (2) 4M x 32 | (2) 2M x 32 | (2) 2M x 32 | None |
| 64MB | (2) 4M x 32 | (2) 4M x 32 | None | None |
| 64MB | (2) 2M x 32 | (2) 2M x 32 | (2) 2M x 32 | (2) 2M x 32 |
| 66MB | (2) 8M x 32 | (2) 256K x 32 | None | None |
| 66MB | (2) 256K x 32 | (2) 4M x 32 | (2) 4M x 32 | None |
| 66MB | (2) 256K x 32 | (2) 8M x 32 | None | None |
| 68MB | (2) 8M x 32 | (2) 256K x 32 | (2) 256K x 32 | None |
| 68MB | (2) 8M x 32 | (2) 512K x 32 | None | None |
| 68MB | (2) 512K x 32 | (2) 4M x 32 | (2) 4M x 32 | None |
| 68MB | (2) 512K x 32 | (2) 8M x 32 | None | None |
| 70MB | (2) 8M x 32 | (2) 256K x 32 | (2) 256K x 32 | (2) 256K x 32 |
| 72MB | (2) 8M x 32 | (2) 512K x 32 | (2) 512K x 32 | None |
| 72MB | (2) 8M x 32 | (2) 1M x 32 | None | None |
| 72MB | (2) 1M x 32 | (2) 4M x 32 | (2) 4M x 32 | None |
| 72MB | (2) 1M x 32 | (2) 8M x 32 | None | None |
| 76MB | (2) 8M x 32 | (2) 512K x 32 | (2) 512K x 32 | (2) 512K x 32 |
| 80MB | (2) 8M x 32 | (2) 1M x 32 | (2) 1M x 32 | None |

Continued on next page...

TYAN COMPUTER CORPORATION

S1562S (REV. 1.1)

... continued from previous page

| DRAM CONFIGURATION (CON'T) | | | | |
|----------------------------|---------------|---------------|---------------|---------------|
| Size | Bank 0 | Bank 1 | Bank 2 | Bank 3 |
| 80MB | (2) 8M x 32 | (2) 2M x 32 | None | None |
| 80MB | (2) 4M x 32 | (2) 2M x 32 | (2) 2M x 32 | (2) 2M x 32 |
| 80MB | (2) 2M x 32 | (2) 4M x 32 | (2) 4M x 32 | None |
| 80MB | (2) 2M x 32 | (2) 8M x 32 | None | None |
| 88MB | (2) 8M x 32 | (2) 1M x 32 | (2) 1M x 32 | (2) 1M x 32 |
| 96MB | (2) 8M x 32 | (2) 2M x 32 | (2) 2M x 32 | None |
| 96MB | (2) 8M x 32 | (2) 4M x 32 | None | None |
| 96MB | (2) 4M x 32 | (2) 4M x 32 | (2) 4M x 32 | None |
| 96MB | (2) 4M x 32 | (2) 8M x 32 | None | None |
| 98MB | (2) 256K x 32 | (2) 4M x 32 | (2) 4M x 32 | (2) 4M x 32 |
| 100MB | (2) 512K x 32 | (2) 4M x 32 | (2) 4M x 32 | (2) 4M x 32 |
| 104MB | (2) 1M x 32 | (2) 4M x 32 | (2) 4M x 32 | (2) 4M x 32 |
| 112MB | (2) 8M x 32 | (2) 2M x 32 | (2) 2M x 32 | (2) 2M x 32 |
| 112MB | (2) 2M x 32 | (2) 4M x 32 | (2) 4M x 32 | (2) 4M x 32 |
| 128MB | (2) 16M x 32 | None | None | None |
| 128MB | (2) 8M x 32 | (2) 4M x 32 | (2) 4M x 32 | None |
| 128MB | (2) 8M x 32 | (2) 8M x 32 | None | None |
| 128MB | (2) 4M x 32 | (2) 4M x 32 | (2) 4M x 32 | (2) 4M x 32 |
| 130MB | (2) 16M x 32 | (2) 256K x 32 | None | None |
| 130MB | (2) 256K x 32 | (2) 8M x 32 | (2) 8M x 32 | None |
| 130MB | (2) 256K x 32 | (2) 16M x 32 | None | None |
| 132MB | (2) 16M x 32 | (2) 256K x 32 | (2) 256K x 32 | None |
| 132MB | (2) 16M x 32 | (2) 512K x 32 | None | None |
| 132MB | (2) 512K x 32 | (2) 8M x 32 | (2) 8M x 32 | None |
| 132MB | (2) 512K x 32 | (2) 16M x 32 | None | None |
| 134MB | (2) 16M x 32 | (2) 256K x 32 | (2) 256K x 32 | (2) 256K x 32 |
| 136MB | (2) 16M x 32 | (2) 512K x 32 | (2) 512K x 32 | None |
| 136MB | (2) 16M x 32 | (2) 1M x 32 | None | None |
| 136MB | (2) 1M x 32 | (2) 8M x 32 | (2) 8M x 32 | None |
| 136MB | (2) 1M x 32 | (2) 16M x 32 | None | None |
| 140MB | (2) 16M x 32 | (2) 512K x 32 | (2) 512K x 32 | (2) 512K x 32 |
| 144MB | (2) 16M x 32 | (2) 1M x 32 | (2) 1M x 32 | None |
| 144MB | (2) 16M x 32 | (2) 2M x 32 | None | None |
| 144MB | (2) 2M x 32 | (2) 8M x 32 | (2) 8M x 32 | None |
| 144MB | (2) 2M x 32 | (2) 16M x 32 | None | None |
| 152MB | (2) 16M x 32 | (2) 1M x 32 | (2) 1M x 32 | (2) 1M x 32 |
| 160MB | (2) 16M x 32 | (2) 2M x 32 | (2) 2M x 32 | None |
| 160MB | (2) 16M x 32 | (2) 4M x 32 | None | None |
| 160MB | (2) 8M x 32 | (2) 4M x 32 | (2) 4M x 32 | (2) 4M x 32 |
| 160MB | (2) 4M x 32 | (2) 8M x 32 | (2) 8M x 32 | None |
| 160MB | (2) 4M x 32 | (2) 16M x 32 | None | None |
| 176MB | (2) 16M x 32 | (2) 2M x 32 | (2) 2M x 32 | (2) 2M x 32 |

Continued on next page...

TYAN COMPUTER CORPORATION
S1562S (REV. 1.1)

... continued from previous page

| DRAM CONFIGURATION (CON'T) | | | | |
|----------------------------|---------------|--------------|--------------|--------------|
| Size | Bank 0 | Bank 1 | Bank 2 | Bank 3 |
| 192MB | (2) 16M x 32 | (2) 4M x 32 | (2) 4M x 32 | None |
| 192MB | (2) 16M x 32 | (2) 8M x 32 | None | None |
| 192MB | (2) 8M x 32 | (2) 8M x 32 | (2) 8M x 32 | None |
| 192MB | (2) 8M x 32 | (2) 16M x 32 | None | None |
| 194MB | (2) 256K x 32 | (2) 8M x 32 | (2) 8M x 32 | (2) 8M x 32 |
| 196MB | (2) 512K x 32 | (2) 8M x 32 | (2) 8M x 32 | (2) 8M x 32 |
| 200MB | (2) 1M x 32 | (2) 8M x 32 | (2) 8M x 32 | (2) 8M x 32 |
| 208MB | (2) 2M x 32 | (2) 8M x 32 | (2) 8M x 32 | (2) 8M x 32 |
| 224MB | (2) 16M x 32 | (2) 4M x 32 | (2) 4M x 32 | (2) 4M x 32 |
| 224MB | (2) 4M x 32 | (2) 8M x 32 | (2) 8M x 32 | (2) 8M x 32 |
| 256MB | (2) 16M x 32 | (2) 8M x 32 | (2) 8M x 32 | None |
| 256MB | (2) 16M x 32 | (2) 16M x 32 | None | None |
| 256MB | (2) 8M x 32 | (2) 8M x 32 | (2) 8M x 32 | (2) 8M x 32 |
| 258MB | (2) 256K x 32 | (2) 16M x 32 | (2) 16M x 32 | None |
| 260MB | (2) 512K x 32 | (2) 16M x 32 | (2) 16M x 32 | None |
| 264MB | (2) 1M x 32 | (2) 16M x 32 | (2) 16M x 32 | None |
| 272MB | (2) 2M x 32 | (2) 16M x 32 | (2) 16M x 32 | None |
| 288MB | (2) 4M x 32 | (2) 16M x 32 | (2) 16M x 32 | None |
| 320MB | (2) 16M x 32 | (2) 8M x 32 | (2) 8M x 32 | (2) 8M x 32 |
| 320MB | (2) 8M x 32 | (2) 16M x 32 | (2) 16M x 32 | None |
| 384MB | (2) 16M x 32 | (2) 16M x 32 | (2) 16M x 32 | None |
| 386MB | (2) 256K x 32 | (2) 16M x 32 | (2) 16M x 32 | (2) 16M x 32 |
| 388MB | (2) 512K x 32 | (2) 16M x 32 | (2) 16M x 32 | (2) 16M x 32 |
| 392MB | (2) 1M x 32 | (2) 16M x 32 | (2) 16M x 32 | (2) 16M x 32 |
| 400MB | (2) 2M x 32 | (2) 16M x 32 | (2) 16M x 32 | (2) 16M x 32 |
| 416MB | (2) 4M x 32 | (2) 16M x 32 | (2) 16M x 32 | (2) 16M x 32 |
| 448MB | (2) 8M x 32 | (2) 16M x 32 | (2) 16M x 32 | (2) 16M x 32 |
| 512MB | (2) 16M x 32 | (2) 16M x 32 | (2) 16M x 32 | (2) 16M x 32 |

Note: Board accepts EDO memory.

| CACHE CONFIGURATION | | |
|---------------------|------------------------|-----------------------|
| Size | SL1 | TAG |
| 256KB | 256KB module installed | TAG chip(s) installed |
| 512KB | 512KB module installed | TAG chip(s) installed |

Note: The size of the TAG chip is unidentified.

Continued on next page...

TYAN COMPUTER CORPORATION

S1562S (REV. 1.1)

... continued from previous page

| CPU SPEED SELECTION (CYRIX) | | | |
|-----------------------------|--------------------------|--------|------|
| Speed | J13 | J19 | J20 |
| 120MHz | Pins 1 & 2, 3 & 4 closed | Closed | Open |
| 150MHz | Pins 3 & 4 closed | Closed | Open |
| 166MHz | Pins 1 & 2 closed | Closed | Open |

| CPU SPEED SELECTION (INTEL) | | | |
|-----------------------------|--------------------------|--------|--------|
| Speed | J13 | J19 | J20 |
| 75MHz | Pins 1 & 2, 3 & 4 closed | Open | Open |
| 90MHz | Pins 3 & 4 closed | Open | Open |
| 100MHz | Pins 1 & 2 closed | Open | Open |
| 120MHz | Pins 3 & 4 closed | Closed | Open |
| 133MHz | Pins 1 & 2 closed | Closed | Open |
| 150MHz | Pins 3 & 4 closed | Closed | Closed |
| 166MHz | Pins 1 & 2 closed | Closed | Closed |
| 200MHz | Pins 1 & 2 closed | Open | Closed |

| CPU VOLTAGE SELECTION | | | | | | | |
|-----------------------|--------|--------|--------|--------|--------|--------|--------|
| Voltage | J1 | J2 | J8 | J9 | J10 | J11 | J12 |
| 3.3v | Open | Open | Closed | Closed | Closed | Open | Open |
| 5v | Closed | Closed | Open | Open | Open | Closed | Closed |

| VOLTAGE REGULATOR SELECTION | | | |
|-----------------------------|--------|--------|--------|
| Voltage | J37 | J38 | J39 |
| 3.3v | Closed | Open | Open |
| 3.48v | Open | Open | Closed |
| 3.6v | Open | Closed | Open |

| SERIAL PORT SELECTION | | |
|--------------------------------|-------------------|-------------------|
| Setting | J14 | J15 |
| Serial port set as COM1 & COM2 | Pins 1 & 2 closed | Pins 1 & 2 closed |
| IR connector | Pins 2 & 3 closed | Pins 2 & 3 closed |

| FLASH BIOS SELECTION | | |
|----------------------|-------------------|-------------------|
| Setting | J47 | J48 |
| Flash BIOS installed | Pins 1 & 2 closed | Pins 1 & 2 closed |