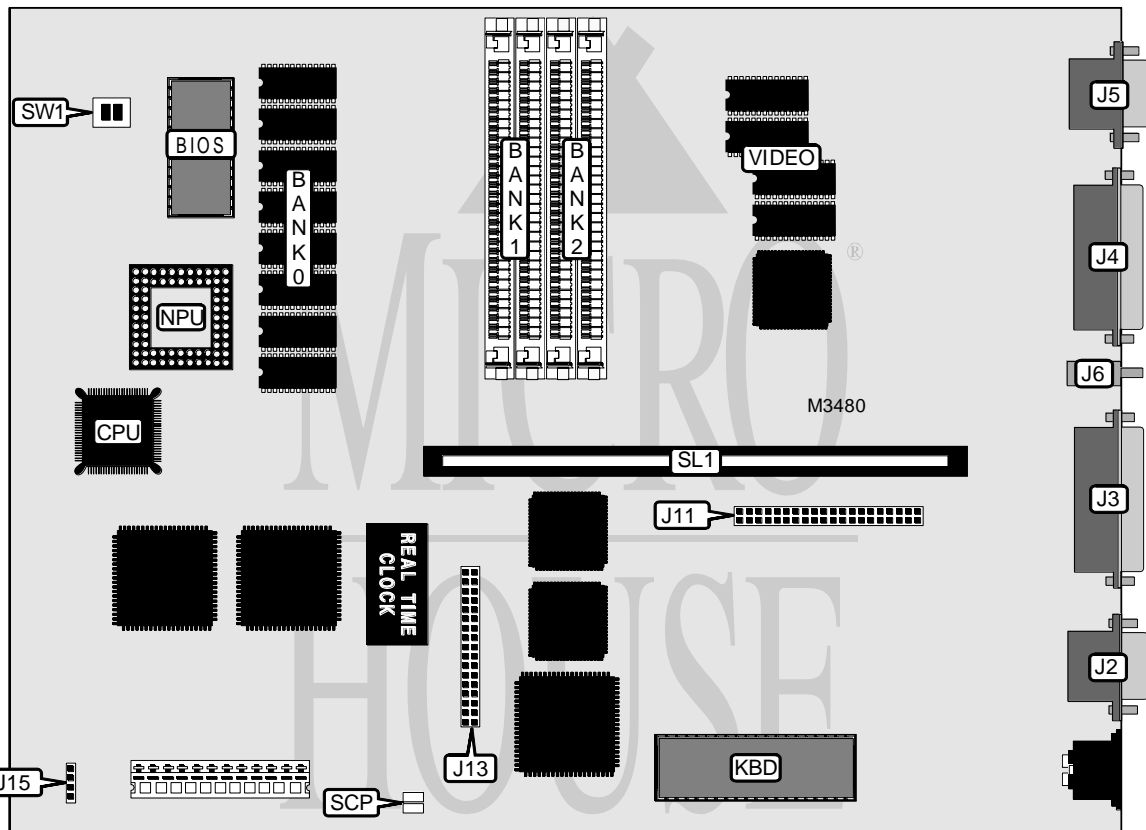


NCR CORPORATION

MODEL 3307-XXXX PC386ISA 16/20MHZ

Processor	80386SX
Processor Speed	16/20MHz
Chip Set	Unidentified
Video Chip Set	Unidentified
Maximum Onboard Memory	16MB
Maximum Video Memory	512KB
Cache	None
BIOS	Unidentified
Dimensions	330mm x 218mm
I/O Options	Floppy drive interface, IDE interface, parallel port, serial ports (2), VGA port, riser slot, volume control
NPU Options	80387SX



CONNECTIONS			
Purpose	Location	Purpose	Location
Serial port 2	J2	IDE interface	J11
Serial port 1	J3	Floppy drive interface	J13
Parallel port	J4	Power LED & keylock	J15
VGA port	J5	Short cut pads to skip password	SCP
Volume control	J6	Riser slot	SL1

Continued on next page . . .

NCR CORPORATION

MODEL 3307-XXXX PC386ISA 16/20MHZ

... continued from previous page

USER CONFIGURABLE SETTINGS		
Function	Label	Position
í On board video enabled	SW1/1	Off
On board video disabled	SW1/1	On
í Monitor type select color	SW1/2	On
Monitor type select monochrome	SW1/2	Off

DRAM CONFIGURATION			
Size	Bank 0	Bank 1	Bank 2
3MB	1MB	(2) 1M x 9	None
5MB	1MB	(2) 1M x 9	(2) 1M x 9
9MB	1MB	(2) 4M x 9	None
16MB	1MB	(2) 4M x 9	(2) 4M x 9

Note: Bank 0 is factory installed and is not configurable. If 16MB is installed, bank 0 is disabled.

VIDEO MEMORY CONFIGURATION
Note: 512KB video memory is factory installed and is not configurable.