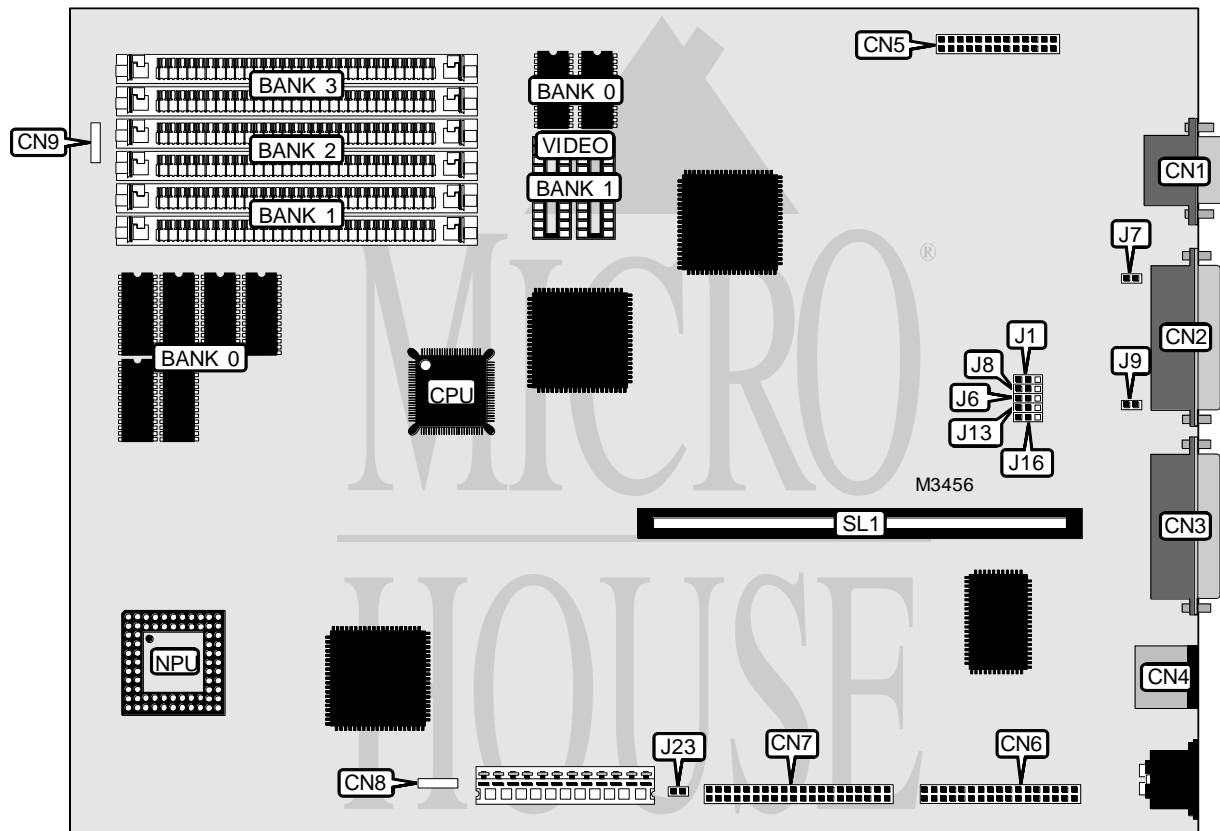


OLIVETTI

M300-08 (BA19, BA324, BA325)

M300-15 (BA320)

Processor	80386SX
Processor Speed	20MHz (M300-08) 25MHz (M300-15)
Chip Set	OPTI
Video Chip Set	Oak
Maximum Onboard Memory	16MB
Maximum Video Memory	512KB
Cache	None
BIOS	Unidentified
Dimensions	330mm x 218mm
I/O Options	Floppy drive interface, IDE interface, parallel port, PS/2 mouse port, serial port, feature connector, VGA port, riser slot
NPU Options	80387SX



CONNECTIONS			
Purpose	Location	Purpose	Location
VGA port	CN1	Floppy drive interface	CN6
Serial port	CN2	IDE interface	CN7
Parallel port	CN3	External battery	CN8
PS/2 mouse port	CN4	Speaker	CN9
Feature connector	CN5	Riser slot	SL1

Continued on next page. . .

OLIVETTI

M300-08 (BA19, BA324, BA325)

M300-15 (BA320)

... continued from previous page

USER CONFIGURABLE SETTINGS		
Function	Label	Position
í Built in setup carried out	J1	Pins 2 & 3 closed
Built in setup not carried out	J1	Pins 1 & 2 closed
í PS/2 mouse IRQ12 enabled	J13	Pins 2 & 3 closed
PS/2 mouse IRQ12 disabled	J13	Pins 1 & 2 closed
í Floppy drive write protect disabled	J16	Pins 2 & 3 closed
Floppy drive write protect enabled	J16	Pins 1 & 2 closed
í One hard drive installed	J23	Closed
Two hard drives installed	J23	Open

DRAM CONFIGURATION				
Size	Bank 0	Bank 1	Bank 2	Bank 3
2MB	2MB	None	None	None
4MB	2MB	(2) 1M x 9	None	None
8MB	2MB	(2) 1M x 9	(2) 1M x 9	(2) 1M x 9
10MB	2MB	(2) 4M x 9	None	None
14MB	2MB	(2) 4M x 9	(2) 1M x 9	None
16MB	(2MB)	(2) 4M x 9	(2) 4M x 9	None

Note: Bank 0 is factory installed and is not configurable. If 16MB is installed, the 2MB factory installed memory is disabled.

VIDEO MEMORY CONFIGURATION		
Size	Bank 0	Bank 1
256KB	256KB	None
512KB	256KB	(2) 256K x 4

Note: Bank 0 is factory installed and is not configurable.

SERIAL PORT SELECTION		
Setting	J6	J8
í Enabled	Pins 2 & 3 closed	Pins 2 & 3 closed
Disabled	Pins 1 & 2 closed	Pins 1 & 2 closed

RING INDICATOR/INPUT SIGNAL CONFIGURATION		
Setting	J7	J9
FAIL SAFE disabled	Closed	Closed