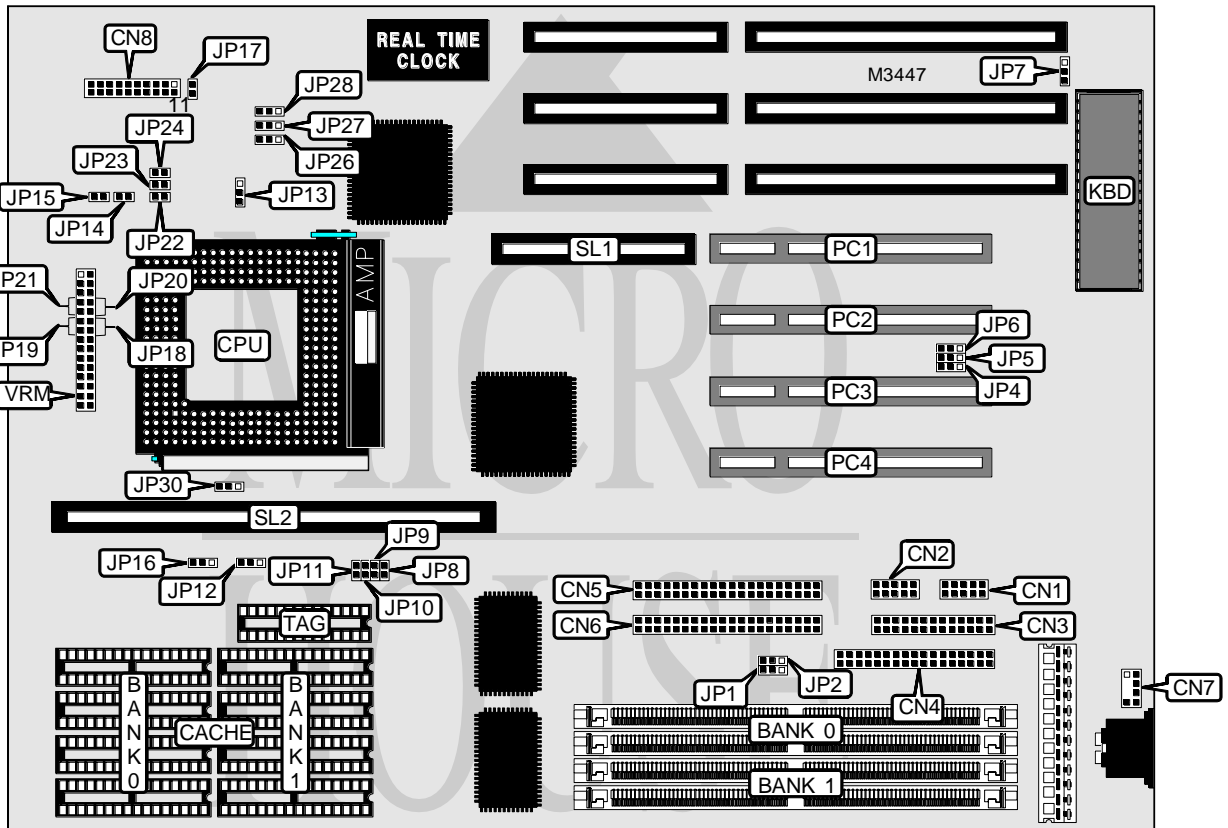


ASUS COMPUTER INTERNATIONAL P/I-P55TP4XEG (VER. 2.4)

Processor	Pentium
Processor Speed	75/90/100/120/133/150/166MHz
Chip Set	Intel
Video Chip Set	None
Maximum Onboard Memory	128MB (EDO supported)
Maximum Video Memory	None
Cache	256/512KB
BIOS	Award
Dimensions	330mm x 218mm
I/O Options	32-bit PCI slots (4), floppy drive interface, green PC connector, IDE interfaces (2), parallel port, PS/2 mouse interface, serial ports (2), cache slot, VRM connector, MediaBus slot
NPU Options	None



Continued on next page . . .

ASUS COMPUTER INTERNATIONAL P/I-P55TP4XEG (VER. 2.4)

... continued from previous page

CONNECTIONS			
Purpose	Location	Purpose	Location
Serial port 1	CN1	Reset switch	CN8 pins 9 & 10
Serial port 2	CN2	Power LED & keylock	CN8 pins 11 - 15
Parallel port	CN3	Speaker	CN8 pins 17 - 20
Floppy drive interface	CN4	IDE interface LED	JP17
IDE interface 1	CN5	Chassis fan power	JP30
IDE interface 2	CN6	32-bit PCI slots	PC1 - PC4
PS/2 mouse interface	CN7	MediaBus slot	SL1
Turbo LED	CN8 pins 2 & 3	Cache slot	SL2
Green PC connector	CN8 pins 4 & 5	VRM connector	VRM

USER CONFIGURABLE SETTINGS		
Function	Label	Position
í On board multi I/O enabled	JP4	Pins 1 & 2 closed
On board multi I/O disabled	JP4	Pins 2 & 3 closed
í PS/2 mouse disabled	JP7	Pins 2 & 3 closed
PS/2 mouse enabled	JP7	Pins 1 & 2 closed
í CMOS memory normal operation	JP13	Open
CMOS memory clear	JP13	Closed

Note: If the multi I/O chip is a UM8669F, JP4 is not used. It is enabled or disabled through the BIOS.

DRAM CONFIGURATION		
Size	Bank 0	Bank 1
8MB	(2) 1M x 32	None
8MB	None	(2) 1M x 32
16MB	(2) 2M x 32	None
16MB	None	(2) 2M x 32
16MB	(2) 1M x 32	(2) 1M x 32
24MB	(2) 1M x 32	(2) 2M x 32
24MB	(2) 2M x 32	(2) 1M x 32
32MB	(2) 4M x 32	None
32MB	None	(2) 4M x 32
32MB	(2) 2M x 32	(2) 2M x 32
40MB	(2) 1M x 32	(2) 4M x 32
40MB	(2) 4M x 32	(2) 1M x 32
48MB	(2) 2M x 32	(2) 4M x 32
48MB	(2) 4M x 32	(2) 2M x 32
64MB	(2) 8M x 32	None

Continued on next page...

ASUS COMPUTER INTERNATIONAL

P/I-P55TP4XEG (VER. 2.4)

... continued from previous page

DRAM CONFIGURATION (CON'T)		
Size	Bank 0	Bank 1
64MB	None	(2) 8M x 32
64MB	(2) 4M x 32	(2) 4M x 32
72MB	(2) 1M x 32	(2) 8M x 32
72MB	(2) 8M x 32	(2) 1M x 32
80MB	(2) 2M x 32	(2) 8M x 32
80MB	(2) 8M x 32	(2) 2M x 32
96MB	(2) 4M x 32	(2) 8M x 32
96MB	(2) 8M x 32	(2) 4M x 32
128MB	(2) 8M x 32	(2) 8M x 32

Note: Board accepts EDO memory. Board also accepts x 36 SIMMs.

CACHE CONFIGURATION				
Size	Bank 0	Bank 1	TAG	SL2
256KB (A)	(4) 32K x 8	(4) 32K x 8	(1) 8K/16K/32K x 8	Not installed
256KB (B)	None	None	None	256KB module Installed
512KB (A)	(4) 64K x 8	(4) 64K x 8	(1) 16K/32K x 8	Not installed
512KB (B)	None	None	None	512KB module Installed

CACHE CONFIGURATION	
Type	JP16
Asynchronous cache enabled	Pins 1 & 2 closed
Asynchronous cache disabled	Pins 2 & 3 closed

CACHE JUMPER CONFIGURATION	
Size	JP12
256KB (A)	Pins 2 & 3 closed
512KB (A)	Pins 1 & 2 closed

CACHE VOLTAGE CONFIGURATION				
Voltage	JP8	JP9	JP10	JP11
Mixed voltage	Closed	Closed	Open	Open
3.3v	Open	Open	Closed	Closed

CPU SPEED SELECTION							
CPU speed	Clock speed	Multiplier	JP14	JP15	JP26	JP27	JP28
75MHz	50MHz	1.5x	Open	Open	1 & 2	2 & 3	2 & 3
90MHz	60MHz	1.5x	Open	Open	2 & 3	2 & 3	1 & 2
100MHz	66MHz	1.5x	Open	Open	2 & 3	1 & 2	2 & 3
120MHz	60MHz	2x	Open	Closed	2 & 3	2 & 3	1 & 2
133MHz	66MHz	2x	Open	Closed	2 & 3	1 & 2	2 & 3
150MHz	60MHz	2.5x	Closed	Closed	2 & 3	2 & 3	1 & 2
166MHz	66MHz	2.5x	Closed	Closed	2 & 3	1 & 2	2 & 3

Note: Pins designated should be in the closed position.

Continued on next page. . .

ASUS COMPUTER INTERNATIONAL

P/I-P55TP4XEG (VER. 2.4)

... continued from previous page

CPU VOLTAGE SELECTION			
Voltage	JP22	JP23	JP24
3.3v (STD/VR)	Closed	Open	Open
3.4v - 3.6v (VRE)	Open	Closed	Open

CPU VOLTAGE SELECTION				
Setting	JP18	JP19	JP20	JP21
VRM not installed	Closed	Closed	Closed	Closed
VRM installed	Open	Open	Open	Open

SERIAL PORT 2 SELECTION		
Setting	JP1	JP2
í Used as COM2	Pins 1 & 2 closed	Pins 1 & 2 closed

FLASH BIOS SELECTION		
Setting	JP5	JP6
Flash BIOS write protect enabled	Pins 1 & 2 closed	Pins 2 & 3 closed
Flash BIOS write protect disabled	Pins 2 & 3 closed	Pins 2 & 3 closed