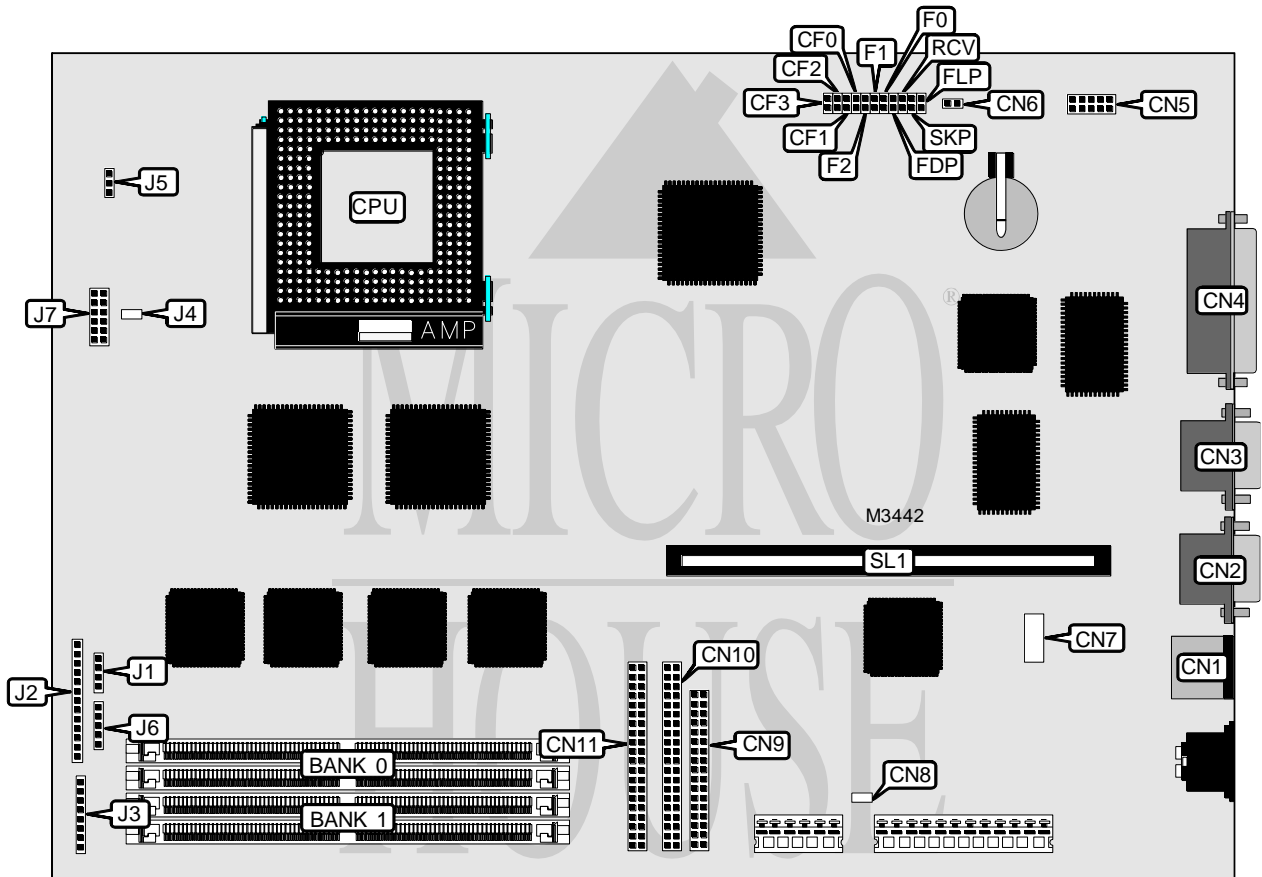


SIEMENS NIXDORF INFORMATIONSSYSTEME AG SYSTEM BOARD D931

Processor	Pentium Pro
Processor Speed	150/166/180/200MHz
Chip Set	Unidentified
Video Chip Set	None
Maximum Onboard Memory	256MB
Maximum Video Memory	None
Cache	256KB (on Pentium Pro CPU)
BIOS	Phoenix
Dimensions	330mm x 218mm
I/O Options	Floppy drive interface, IDE interfaces (2), parallel port, PS/2 mouse port, serial ports (2), serial port TTL, riser slot, IR connectors (2), remote on connector, chipcard reader connector, soft off power supply connector
NPU Options	None



SIEMENS NIXDORF INFORMATIONSSYSTEME AG SYSTEM BOARD D931

... continued from previous page

CONNECTIONS			
Purpose	Location	Purpose	Location
PS/2 mouse port	CN1	IDE interface 2	CN11
Serial port 1	CN2	Speaker	J1
Serial port 2	CN3	Front panel connector	J2
Parallel port	CN4	Front panel connector	J3
Serial port 2 TTL	CN5	On/off switch	J4
Remote on connector	CN6	Chassis fan power	J5
Chipcard reader connector	CN7	IR connector	J6
Soft off power supply connector	CN8	Front panel led/IR connector	J7
Floppy drive interface	CN9	Riser slot	SL1
IDE interface 1	CN10		

Note: If CN7 is used, no device may be connected to CN2. If CN5 is used, no device may be connected to CN3.

USER CONFIGURABLE SETTINGS		
Function	Label	Position
í Floppy drive write protect disabled	FDP	Open
Floppy drive write protect enabled	FDP	Closed
í BIOS write protect disabled	FLP	Open
BIOS write protect enabled	FLP	Closed
í BIOS started from the system module	RCV	Open
BIOS started from floppy and restores BIOS	RCV	Closed
í Factory configured - do not alter	SKP	Unidentified

DRAM CONFIGURATION		
Size	Bank 0	Bank 1
8MB	(2) 1M x 36	None
16MB	(2) 2M x 36	None
16MB	(2) 1M x 36	(2) 1M x 36
24MB	(2) 2M x 36	(2) 1M x 36
24MB	(2) 1M x 36	(2) 2M x 36
32MB	(2) 4M x 36	None
32MB	(2) 2M x 36	(2) 2M x 36
40MB	(2) 4M x 36	(2) 1M x 36
40MB	(2) 1M x 36	(2) 4M x 36
48MB	(2) 4M x 36	(2) 2M x 36
48MB	(2) 2M x 36	(2) 4M x 36
64MB	(2) 8M x 36	None
64MB	(2) 4M x 36	(2) 4M x 36
72MB	(2) 8M x 36	(2) 1M x 36
72MB	(2) 1M x 36	(2) 8M x 36
80MB	(2) 8M x 36	(2) 2M x 36
80MB	(2) 2M x 36	(2) 8M x 36
96MB	(2) 8M x 36	(2) 4M x 36
96MB	(2) 4M x 36	(2) 8M x 36
128MB	(2) 8M x 36	(2) 8M x 36

Continued on next page. . .

SIEMENS NIXDORF INFORMATIONSSYSTEME AG
SYSTEM BOARD D931

... continued from previous page

DRAM CONFIGURATION (CON'T)		
Size	Bank 0	Bank 1
128MB	(2) 16M x 36	None
136MB	(2) 16M x 36	(2) 1M x 36
144MB	(2) 16M x 36	(2) 2M x 36
160MB	(2) 16M x 36	(2) 4M x 36
192MB	(2) 16M x 36	(2) 8M x 36
256MB	(2) 16M x 36	(2) 16M x 36

CACHE CONFIGURATION
Note: 256KB cache is located on the Pentium Pro CPU.

CPU SPEED SELECTION							
Speed	CF0	CF1	CF2	CF3	F0	F1	F2
150MHz	Closed	Closed	Closed	Open	Open	Open	Open
166MHz	Closed	Closed	Closed	Open	Closed	Open	Open
180MHz	Closed	Closed	Open	Closed	Open	Open	Open
200MHz	Closed	Closed	Open	Closed	Closed	Open	Open