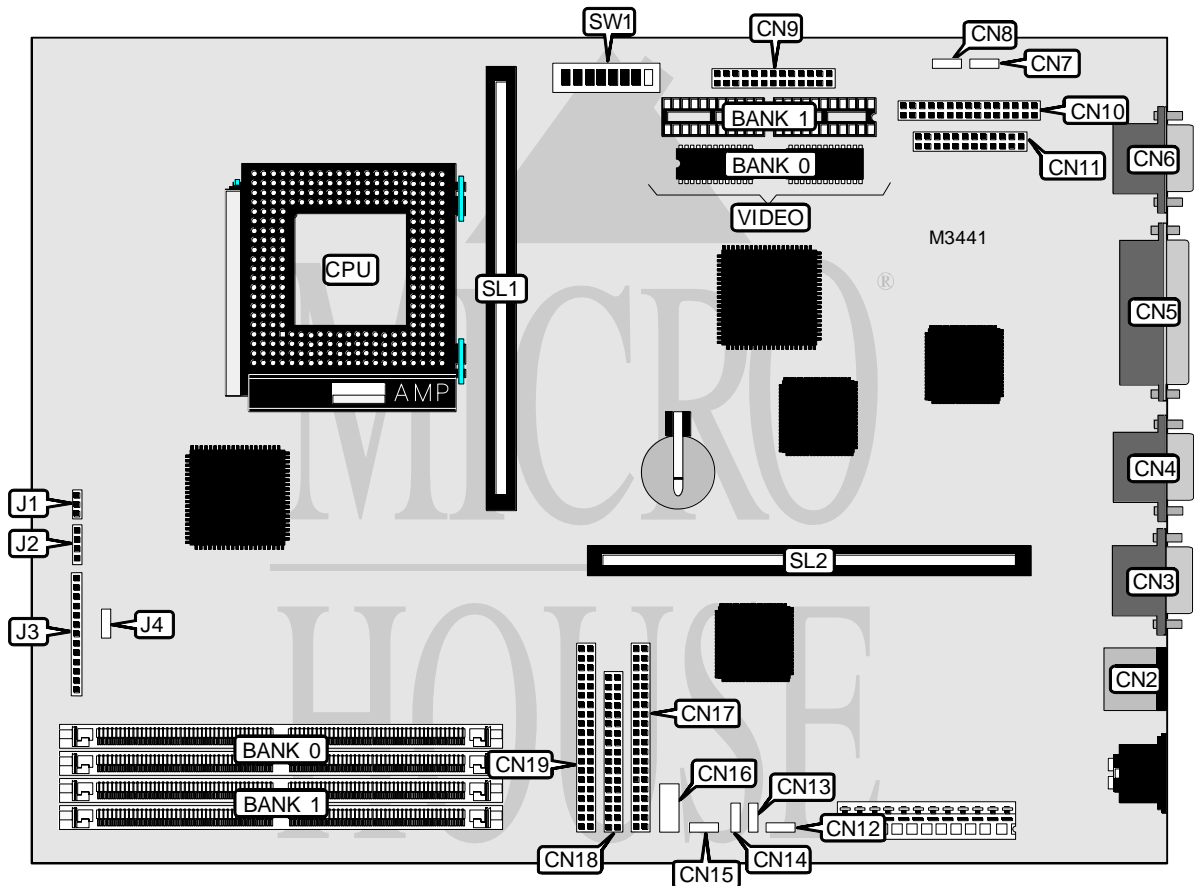


# SIEMENS NIXDORF INFORMATIONSSYSTEME AG SYSTEM BOARD D943

<b>Processor</b>	Pentium
<b>Processor Speed</b>	75/90/100/120/133/150/166/200MHz
<b>Chip Set</b>	Unidentified
<b>Video Chip Set</b>	Cirrus Logic
<b>Maximum Onboard Memory</b>	128MB (EDO supported)
<b>Maximum Video Memory</b>	2MB
<b>Cache</b>	128/256/512KB
<b>BIOS</b>	Phoenix
<b>Dimensions</b>	330mm x 218mm
<b>I/O Options</b>	Floppy drive interface, game/MIDI interface, IDE interfaces (2), parallel port, PS/2 mouse port, serial ports (2), feature connector, VGA port, riser slot, cache slot, IR connector, voice/modem connector, MPEG connector, wavetable connector, CD line in connector, fax/modem connector, chipcard reader connector
<b>NPU Options</b>	None



*Continued on next page. . .*

# SIEMENS NIXDORF INFORMATIONSSYSTEME AG SYSTEM BOARD D943

... continued from previous page

CONNECTIONS			
Purpose	Location	Purpose	Location
PS/2 mouse port	CN2	IR connector	CN14
Serial port 1	CN3	Fax/modem connector	CN15
Serial port 2	CN4	Chipcard reader connector	CN16
Parallel port	CN5	IDE interface 1	CN17
VGA port	CN6	Floppy drive interface	CN18
Voice/modem connector	CN7	IDE interface 2	CN19
MPEG connector	CN8	Chassis fan power	J1
Feature connector	CN9	Speaker	J2
Game/MIDI connector	CN10	Front panel connector	J3
Wavetable connector	CN11	Power on switch	J4
Soft off power supply connector	CN12	Cache slot	SL1
CD line in connector	CN13	Riser slot	SL2

USER CONFIGURABLE SETTINGS			
Function	Label	Position	
í BIOS write protect disabled	SW1/5	Off	
BIOS write protect enabled	SW1/5	On	
í Factory configured - do not alter	SW1/6	Off	
í BIOS started from the system module	SW1/7	Off	
BIOS started from floppy and restores on board	SW1/7	On	
í Floppy drive write protect disabled	SW1/8	Off	
Floppy drive write protect enabled	SW1/8	On	

DRAM CONFIGURATION		
Size	Bank 0	Bank 1
8MB	(2) 1M x 36	None
16MB	(2) 2M x 36	None
16MB	(2) 1M x 36	(2) 1M x 36
24MB	(2) 2M x 36	(2) 1M x 36
24MB	(2) 1M x 36	(2) 2M x 36
32MB	(2) 4M x 36	None
32MB	(2) 2M x 36	(2) 2M x 36
40MB	(2) 4M x 36	(2) 1M x 36
40MB	(2) 1M x 36	(2) 4M x 36
48MB	(2) 4M x 36	(2) 2M x 36
48MB	(2) 2M x 36	(2) 4M x 36
64MB	(2) 8M x 36	None
64MB	(2) 4M x 36	(2) 4M x 36
72MB	(2) 8M x 36	(2) 1M x 36
72MB	(2) 1M x 36	(2) 8M x 36
80MB	(2) 8M x 36	(2) 2M x 36

Continued on next page...

# SIEMENS NIXDORF INFORMATIONSSYSTEME AG

## SYSTEM BOARD D943

... continued from previous page

DRAM CONFIGURATION (CON'T)		
Size	Bank 0	Bank 1
80MB	(2) 2M x 36	(2) 8M x 36
96MB	(2) 8M x 36	(2) 4M x 36
96MB	(2) 4M x 36	(2) 8M x 36
128MB	(2) 8M x 36	(2) 8M x 36

Note: Board accepts EDO memory. Board also accepts x 32 SIMMs.

CACHE CONFIGURATION	
Size	SL1
128KB	128KB module installed
256KB	256KB module installed
512KB	512KB module installed

VIDEO MEMORY CONFIGURATION		
Size	Bank 0	Bank 1
1MB	1MB	None
2MB	1MB	(2) 256K x 16

Note: Bank 0 is factory installed and is not configurable.

CPU SPEED SELECTION				
CPU speed	SW1/1	SW1/2	SW1/3	SW1/4
75MHz	On	On	Off	Off
90MHz	On	Off	Off	Off
100MHz	Off	On	Off	Off
120MHz	On	Off	On	Off
133MHz	Off	On	On	Off
150MHz	On	Off	On	On
166MHz	Off	On	On	On
200MHz	Off	On	Off	On