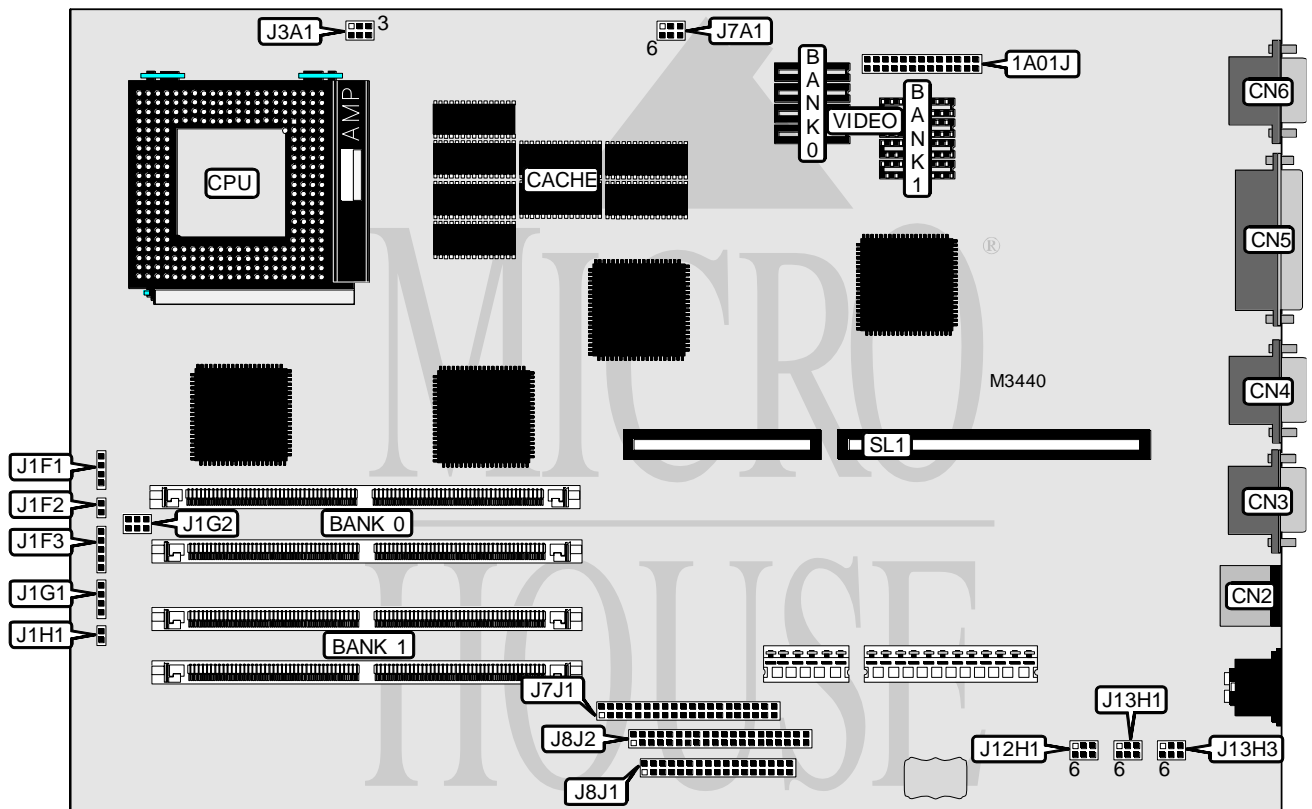


AST RESEARCH, INC. PREMMIA LX P/60 (230822-001,002)

Processor	Pentium
Processor Speed	60/66MHz
Chip Set	Unidentified
Video Chip Set	ATI
Maximum Onboard Memory	128MB
Maximum Video Memory	2MB
Cache	256KB
BIOS	Phoenix
Dimensions	330mm x 218mm
I/O Options	Riser slot, floppy drive interface, IDE interfaces (2), parallel port, PS/2 mouse port, serial ports (2), VGA port
NPU Options	None



Continued on next page . . .

AST RESEARCH, INC.
PREMMIA LX P/60 (230822-001,002)

... continued from previous page

CONNECTIONS			
Purpose	Location	Purpose	Location
PS/2 mouse port	CN2	IDE interface LED	J1G1
Serial port	CN3	Turbo LED	J1H1
Serial port	CN4	Chassis fan power	J3A1 pins 1 - 3
Parallel port	CN5	IDE interface (enhanced)	J7J1
VGA port	CN6	Floppy drive interface	J8J1
Speaker	J1F1	IDE interface (standard)	J8J2
Reset/keylock switch	J1F2	Riser slot	SL1
Front panel connector	J1F3		

USER CONFIGURABLE SETTINGS		
Function	Jumper	Position
Jumper information unavailable	1A01J	Unidentified
í On board video enabled (model 230822-001 only)	J7A1	Pins 2 & 3 closed
On board video disabled (model 230822-001 only)	J7A1	Pins 1 & 2 closed
í Flash BIOS recovery mode disabled	J12H1	Pins 2 & 3 closed
Flash BIOS recovery mode enabled	J12H1	Pins 1 & 2 closed
í Flash BIOS write protect enabled	J12H1	Pins 5 & 6 closed
Flash BIOS write protect disabled	J12H1	Pins 4 & 5 closed
í CMOS memory normal operation	J13H1	Pins 1 & 2 closed
CMOS memory clear	J13H1	Pins 2 & 3 closed
í Password enabled	J13H1	Pins 5 & 6 closed
Password disabled	J13H1	Pins 4 & 5 closed
í Monitor type select color	J13H3	Pins 2 & 3 closed
Monitor type select monochrome	J13H3	Pins 1 & 2 closed
í CMOS access enabled	J13H3	Pins 5 & 6 closed
CMOS access disabled	J13H3	Pins 4 & 5 closed
Jumper information unavailable	J1G2	Unidentified

Note: Jumpers J12G1 & J12G2 on model 230822-002 correspond to jumpers J13H1 & J13H3 on model 230822-001.

DRAM CONFIGURATION		
Size	Bank 0	Bank 1
2MB	(2) 256K x 36	None
4MB	(2) 512K x 36	None
4MB	(2) 256K x 36	(2) 256K x 36
6MB	(2) 512K x 36	(2) 256K x 36
6MB	(2) 256K x 36	(2) 512K x 36
8MB	(2) 1M x 36	None
8MB	(2) 512K x 36	(2) 512K x 36
10MB	(2) 1M x 36	(2) 256K x 36
10MB	(2) 256K x 36	(2) 1M x 36

Continued on next page...

AST RESEARCH, INC.
PREMMIA LX P/60 (230822-001,002)

... continued from previous page

DRAM CONFIGURATION (CON'T)		
Size	Bank 0	Bank 1
12MB	(2) 1M x 36	(2) 512K x 36
12MB	(2) 512K x 36	(2) 1M x 36
16MB	(2) 2M x 36	None
16MB	(2) 1M x 36	(2) 1M x 36
18MB	(2) 2M x 36	(2) 256K x 36
18MB	(2) 256K x 36	(2) 2M x 36
20MB	(2) 2M x 36	(2) 512K x 36
20MB	(2) 512K x 36	(2) 2M x 36
24MB	(2) 2M x 36	(2) 1M x 36
24MB	(2) 1M x 36	(2) 2M x 36
32MB	(2) 4M x 36	None
32MB	(2) 2M x 36	(2) 2M x 36
34MB	(2) 4M x 36	(2) 256K x 36
34MB	(2) 256K x 36	(2) 4M x 36
36MB	(2) 4M x 36	(2) 512K x 36
36MB	(2) 512K x 36	(2) 4M x 36
40MB	(2) 4M x 36	(2) 1M x 36
40MB	(2) 1M x 36	(2) 4M x 36
48MB	(2) 4M x 36	(2) 2M x 36
48MB	(2) 2M x 36	(2) 4M x 36
64MB	(2) 8M x 36	None
64MB	(2) 4M x 36	(2) 4M x 36
66MB	(2) 8M x 36	(2) 256K x 36
66MB	(2) 256K x 36	(2) 8M x 36
68MB	(2) 8M x 36	(2) 512K x 36
68MB	(2) 512K x 36	(2) 8M x 36
72MB	(2) 8M x 36	(2) 1M x 36
72MB	(2) 1M x 36	(2) 8M x 36
80MB	(2) 8M x 36	(2) 2M x 36
80MB	(2) 2M x 36	(2) 8M x 36
96MB	(2) 8M x 36	(2) 4M x 36
96MB	(2) 4M x 36	(2) 8M x 36
128MB	(2) 8M x 36	(2) 8M x 36

CACHE CONFIGURATION

Note: 256KB cache is factory installed and is not configurable.

Continued on next page...

AST RESEARCH, INC.
PREMMIA LX P/60 (230822-001,002)

... continued from previous page

CPU SPEED SELECTION	
Speed	J7A1
60MHz	Pins 4 & 5 closed
66MHz	Pins 5 & 6 closed

VIDEO MEMORY CONFIGURATION		
Size	Bank 0	Bank 1
1MB	(8) 256K x 4	None
2MB	(8) 256K x 4	(8) 256K x 4