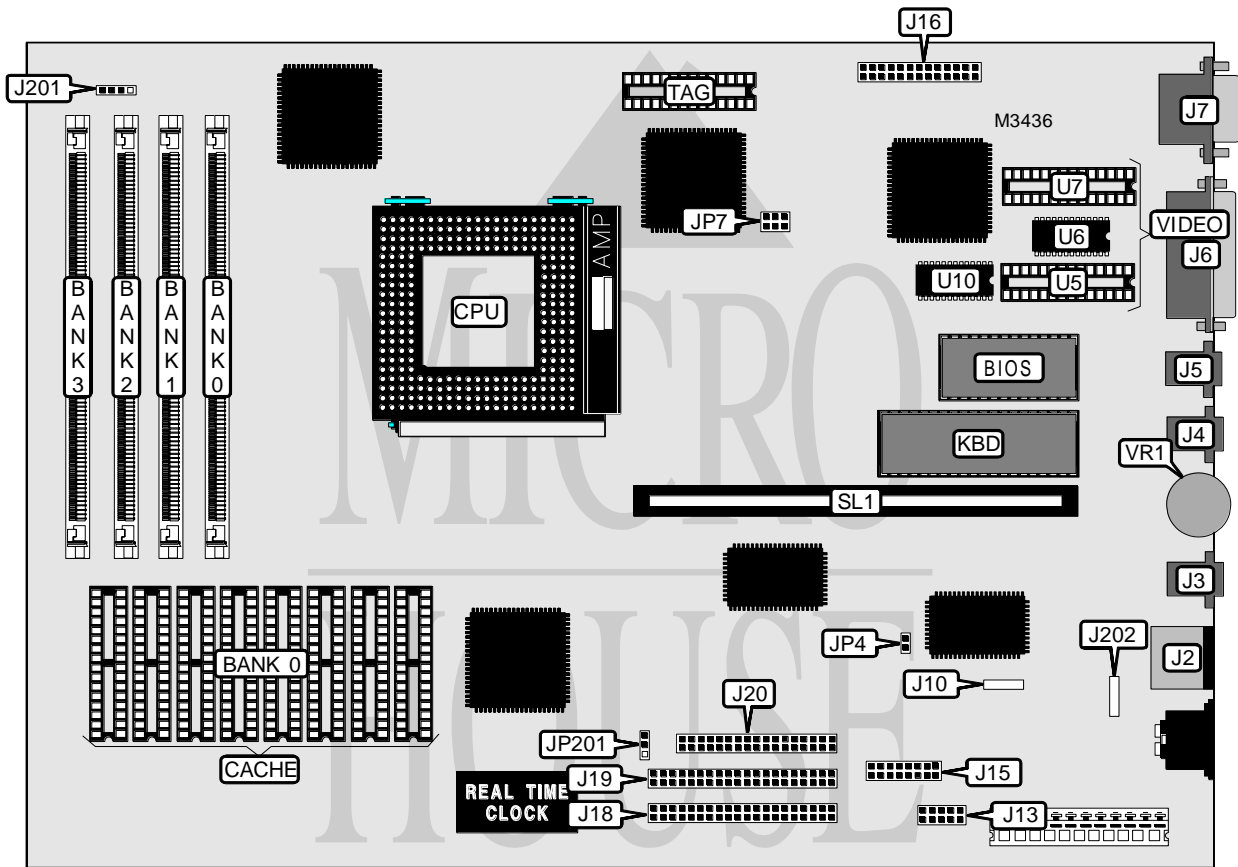


COMPAQ COMPUTER CORPORATION PRESARIO 7100 SERIES (PENTIUM SYSTEM)

Processor	Pentium
Processor Speed	75/90/100MHz
Chip Set	UMC
Video Chip Set	Trio
Maximum Onboard Memory	128MB
Maximum Video Memory	2MB
Cache	256KB
BIOS	Unidentified
Dimensions	330mm x 218mm
I/O Options	Floppy drive interface, IDE interfaces (2), parallel port, PS/2 mouse port, serial port, VGA VESA feature connector, VGA port, riser slot, speaker/headphone out connector, line in connector, audio line in connector, game/MIDI connector, CD-ROM audio in connector, modem connector, microphone connector
NPU Options	None



Continued on next page . . .

COMPAQ COMPUTER CORPORATION

PRESARIO 7100 SERIES (PENTIUM SYSTEM)

... continued from previous page

CONNECTIONS			
Purpose	Location	Purpose	Location
PS/2 mouse port	J2	VGA VESA feature connector	J16
Speaker/headphone out connector	J3	IDE interface 2	J18
Audio line in connector	J4	IDE interface 1	J19
Microphone in connector	J5	Floppy drive interface	J20
Parallel port	J6	IDE interface LED	J201
VGA port	J7	Modem connector	J202
CD-ROM audio in connector	J10	Riser slot	SL1
Serial port	J13	Volume control	VR1
Game/MIDI interface	J15		

USER CONFIGURABLE SETTINGS		
Function	Label	Position
í ESS1688 sound subsystem enabled	JP4	Open
ESS1688 sound subsystem disabled	JP4	Closed
í CMOS memory normal operation	JP201	Pins 2 & 3 closed
CMOS memory clear	JP201	Pins 1 & 2 closed

DRAM CONFIGURATION				
Size	Bank 0	Bank 1	Bank 2	Bank 3
2MB	(1) 256K x 36	(1) 256K x 36	None	None
4MB	(1) 512K x 36	(1) 512K x 36	None	None
4MB	(1) 256K x 36	(1) 256K x 36	(1) 256K x 36	(1) 256K x 36
8MB	(1) 1M x 36	(1) 1M x 36	None	None
8MB	(1) 512K x 36	(1) 512K x 36	(1) 512K x 36	(1) 512K x 36
16MB	(1) 1M x 36	(1) 1M x 36	(1) 1M x 36	(1) 1M x 36
16MB	(1) 2M x 36	(1) 2M x 36	None	None
32MB	(1) 4M x 36	(1) 4M x 36	None	None
32MB	(1) 2M x 36	(1) 2M x 36	(1) 2M x 36	(1) 2M x 36
48MB	(1) 2M x 36	(1) 2M x 36	(1) 4M x 36	(1) 4M x 36
48MB	(1) 4M x 36	(1) 4M x 36	(1) 2M x 36	(1) 2M x 36
64MB	(1) 8M x 36	(1) 8M x 36	None	None
64MB	(1) 4M x 36	(1) 4M x 36	(1) 4M x 36	(1) 4M x 36
128MB	(1) 8M x 36	(1) 8M x 36	(1) 8M x 36	(1) 8M x 36

CACHE CONFIGURATION		
Size	Bank 0	TAG
256KB	(8) 32K x 8	(1) 32K x 8

Continued on next page...

COMPAQ COMPUTER CORPORATION

PRESARIO 7100 SERIES (PENTIUM SYSTEM)

... continued from previous page

VIDEO MEMORY CONFIGURATION				
Size	U5	U6	U7	U10
1MB	None	512KB	None	512KB
2MB	512KB	512KB	512KB	512KB
Note: The size of the chips is unidentified.				

CPU SPEED SELECTION		
CPU speed	Clock speed	JP7
75MHz	50MHz	Pins 1 & 2 closed
90MHz	60MHz	Pins 3 & 4 closed
100MHz	66MHz	Pins 1 & 2, 5 & 6 closed