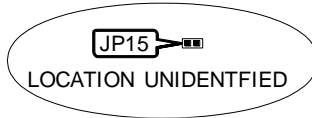
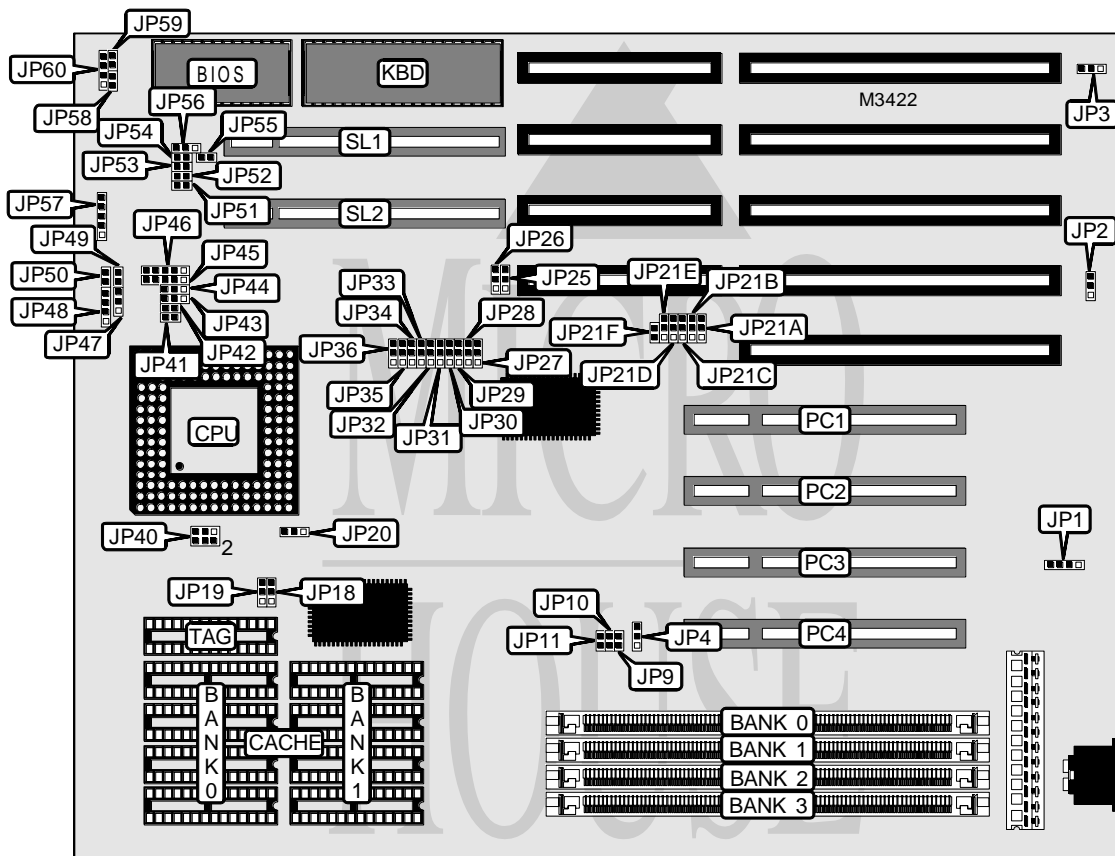


VISIONEX PCI/VESA MOTHERBOARD (VER. 1.0)

Processor	CX486M6/80486SX/80486DX/80486DX2/80486DX4/P24C
Processor Speed	25/33/40/66(internal)/75(internal)/100(internal)MHz
Chip Set	Cypress
Video Chip Set	None
Maximum Onboard Memory	128MB
Maximum Video Memory	None
Cache	128/256/512/1024KB
BIOS	AMI/Award
Dimensions	254mm x 218mm
I/O Options	32-bit VESA local bus slots (2), 32-bit PCI slots (4)
NPU Options	None



Continued on next page . . .

VISIONEX PCI/VESA MOTHERBOARD (VER. 1.0)

... continued from previous page

CONNECTIONS			
Purpose	Location	Purpose	Location
External battery	JP1	Reset switch	JP59
Turbo LED	JP49	Speaker	JP60
Turbo switch	JP50	32-bit PCI slots	PC1 - PC4
Power LED & keylock	JP57	32-bit VESA local bus slots	SL1 & SL2

USER CONFIGURABLE SETTINGS		
Function	Label	Position
í CMOS memory normal operation	JP2	Pins 1 & 2 closed
CMOS memory clear	JP2	Pins 2 & 3 closed
í Flash BIOS disabled	JP3	Open
Flash BIOS voltage select 12v	JP3	Pins 2 & 3 closed
Flash BIOS voltage select 5v	JP3	Pins 1 & 2 closed
Jumper information unavailable	JP9	Unidentified
í Factory configured - do not alter	JP10	Open
í Factory configured - do not alter	JP32	Pins 2 & 3 closed
Jumper information unavailable	JP34	Unidentified
í Factory configured - do not alter	JP35	Pins 2 & 3 closed
í LDEV# delayed 1 CPU CLK	JP36	Pins 2 & 3 closed
LDEV# not delayed 1 CPU CLK	JP36	Pins 1 & 2 closed
Jumper information unavailable	JP42	Unidentified
Jumper information unavailable	JP51	Unidentified
í Monitor type select color	JP55	Open
Monitor type select monochrome	JP55	Closed
Jumper information unavailable	JP58	Unidentified

DRAM CONFIGURATION				
Size	Bank 0	Bank 1	Bank 2	Bank 3
1MB	(1) 256K x 32	None	None	None
2MB	(1) 512K x 32	None	None	None
2MB	(1) 256K x 32	(1) 256K x 32	None	None
3MB	(1) 256K x 32	(1) 256K x 32	(1) 256K x 32	None
4MB	(1) 1M x 32	None	None	None
4MB	(1) 512K x 32	(1) 512K x 32	None	None
4MB	(1) 256K x 32	(1) 256K x 32	(1) 256K x 32	(1) 256K x 32
5MB	(1) 256K x 32	(1) 1M x 32	None	None
8MB	(1) 2M x 32	None	None	None
8MB	(1) 1M x 32	(1) 1M x 32	None	None
9MB	(1) 256K x 32	(1) 1M x 32	(1) 1M x 32	None
10MB	(1) 512K x 32	(1) 2M x 32	None	None
12MB	(1) 1M x 32	(1) 1M x 32	(1) 1M x 32	None
16MB	(1) 4M x 32	None	None	None
16MB	(1) 2M x 32	(1) 2M x 32	None	None
16MB	(1) 1M x 32	(1) 1M x 32	(1) 1M x 32	(1) 1M x 32

Continued on next page...

VISIONEX PCI/VESA MOTHERBOARD (VER. 1.0)

... continued from previous page

DRAM CONFIGURATION (CON'T)				
Size	Bank 0	Bank 1	Bank 2	Bank 3
17MB	(1) 256K x 32	(1) 4M x 32	None	None
20MB	(1) 1M x 32	(1) 4M x 32	None	None
32MB	(1) 8M x 32	None	None	None
32MB	(1) 4M x 32	(1) 4M x 32	None	None
33MB	(1) 256K x 32	(1) 4M x 32	(1) 4M x 32	None
34MB	(1) 512K x 32	(1) 8M x 32	None	None
36MB	(1) 1M x 32	(1) 4M x 32	(1) 4M x 32	None
40MB	(1) 2M x 32	(1) 8M x 32	None	None
48MB	(1) 4M x 32	(1) 4M x 32	(1) 4M x 32	None
49MB	(1) 256K x 32	(1) 4M x 32	(1) 4M x 32	(1) 4M x 32
52MB	(1) 1M x 32	(1) 4M x 32	(1) 4M x 32	(1) 4M x 32
64MB	(1) 8M x 32	(1) 8M x 32	None	None
64MB	(1) 4M x 32	(1) 4M x 32	(1) 4M x 32	(1) 4M x 32
65MB	(1) 256K x 32	(1) 16M x 32	None	None
68MB	(1) 1M x 32	(1) 16M x 32	None	None
80MB	(1) 4M x 32	(1) 16M x 32	None	None
128MB	(1) 16M x 32	(1) 16M x 32	None	None

DRAM JUMPER CONFIGURATION	
Setting	JP4
Set as 4 banks	Pins 1 & 2 closed
Set as 2 banks (banks 0 & 1 & banks 2 & 3)	Pins 2 & 3 closed

CACHE CONFIGURATION			
Size	Bank 0	Bank 1	TAG
128KB	(4) 32K x 8	None	(1) 8K x 8
256KB (A)	(4) 32K x 8	(4) 32K x 8	(1) 32K x 8
256KB (B)	(4) 64K x 8	None	(1) 32K x 8
512KB (A)	(4) 128K x 8	None	(1) 32K x 8
512KB (B)	(4) 64K x 8	(4) 64K x 8	(1) 32K x 8
1MB	(4) 128K x 8	(4) 128K x 8	(1) 128K x 8

CACHE JUMPER CONFIGURATION			
Size	JP18	JP19	JP20
128KB	Open	Pins 2 & 3 closed	Pins 1 & 2 closed
256KB (A)	Open	Pins 1 & 2 closed	Pins 1 & 2 closed
256KB (B)	Open	Pins 2 & 3 closed	Pins 1 & 2 closed
512KB (A)	Open	Pins 2 & 3 closed	Pins 2 & 3 closed
512KB (B)	Pins 1 & 2 closed	Open	Pins 2 & 3 closed
1MB	Pins 2 & 3 closed	Open	Pins 2 & 3 closed

Continued on next page...

VISIONEX PCI/VESA MOTHERBOARD (VER. 1.0)

... continued from previous page

CPU SPEED SELECTION				
Speed	JP15	JP25	JP28	JP29
25MHz	Closed	Open	Pins 1 & 2 closed	Pins 2 & 3 closed
33MHz	Open	Open	Pins 2 & 3 closed	Pins 1 & 2 closed
40MHz	Open	Closed	Pins 1 & 2 closed	Pins 2 & 3 closed
66iMHz	Open	Open	Pins 2 & 3 closed	Pins 1 & 2 closed
75iMHz	Closed	Open	Pins 1 & 2 closed	Pins 2 & 3 closed
100iMHz	Open	Open	Pins 2 & 3 closed	Pins 1 & 2 closed

CPU TYPE SELECTION					
Type	JP26	JP40	JP41	JP43	JP44
CX486M6	Open	1 & 3, 2 & 4	Closed	2 & 3	2 & 3
80486SX	Open	1 & 3, 2 & 4	Open	Open	1 & 2
80486DX	Open	1 & 3, 2 & 4	Open	Open	1 & 2
80486DX2	Open	1 & 3, 2 & 4	Open	Open	1 & 2
80486DX4	Closed	3 & 4, 5 & 6	Open	Open	1 & 2
P24C	Open	1 & 3, 2 & 4	Open	1 & 2	2 & 3

Note: Pins designated should be in the closed position.

CPU TYPE SELECTION (CON'T)					
Type	JP45	JP46	JP47	JP48	JP54
CX486M6	3 & 4	4 & 5	Open	2 & 3	Closed
80486SX	Open	Open	Open	2 & 3	Open
80486DX	Open	Open	2 & 3	1 & 2, 3 & 4	Open
80486DX2	Open	Open	2 & 3	1 & 2, 3 & 4	Open
80486DX4	Open	Open	2 & 3	1 & 2, 3 & 4	Open
P24C	1 & 2, 3 & 4	1 & 2	2 & 3	1 & 2, 3 & 4	Open

Note: Pins designated should be in the closed position.

CPU TYPE SELECTION	
Type	JP27
Cyrix	Pins 2 & 3 closed
AMD	Pins 1 & 2 closed
Intel	Pins 1 & 2 closed

VL BUS SPEED SELECTION			
Speed	JP52	JP53	JP56
25MHz	Open	Open	Pins 2 & 3 closed
33MHz	Open	Open	Pins 2 & 3 closed
40MHz	Closed	Closed	Pins 1 & 2 closed

Continued on next page...

VISIONEX PCI/VESA MOTHERBOARD (VER. 1.0)

... continued from previous page

PCI MODE SELECTION				
Setting	JP11	JP30	JP31	JP33
Asynchronous	Closed	Pins 2 & 3 closed	Pins 1 & 2 closed	Pins 2 & 3 closed
Synchronous	Open	Pins 2 & 3 closed	Pins 2 & 3 closed	Pins 2 & 3 closed

PCI INTERRUPT SELECTION (IRQ9)	
Setting	JP21A
Slots 1 & 2	Pins 1 & 2 closed
Slot 3	Pins 2 & 3 closed

PCI INTERRUPT SELECTION (IRQ10)	
Setting	JP21B
Slots 1 & 2	Pins 1 & 2 closed
Slot 3	Pins 2 & 3 closed

PCI INTERRUPT SELECTION (IRQ11)	
Setting	JP21C
Slots 1 & 2	Pins 1 & 2 closed
Slot 3	Pins 2 & 3 closed

PCI INTERRUPT SELECTION (IRQ12)	
Setting	JP21D
Slots 1 & 2	Pins 1 & 2 closed
Slot 3	Pins 2 & 3 closed

PCI INTERRUPT SELECTION (IRQ15)	
Setting	JP21E
Slots 1 & 2	Pins 1 & 2 closed
Slot 3	Pins 2 & 3 closed

PCI INTERRUPT SELECTION (IRQ14)	
Setting	JP21F
Slot 4 (only for compliant card that use IRQ14)	Pins 1 & 2 closed
Slot 4 (only for non compliant card that use IRQ14)	Pins 2 & 3 closed