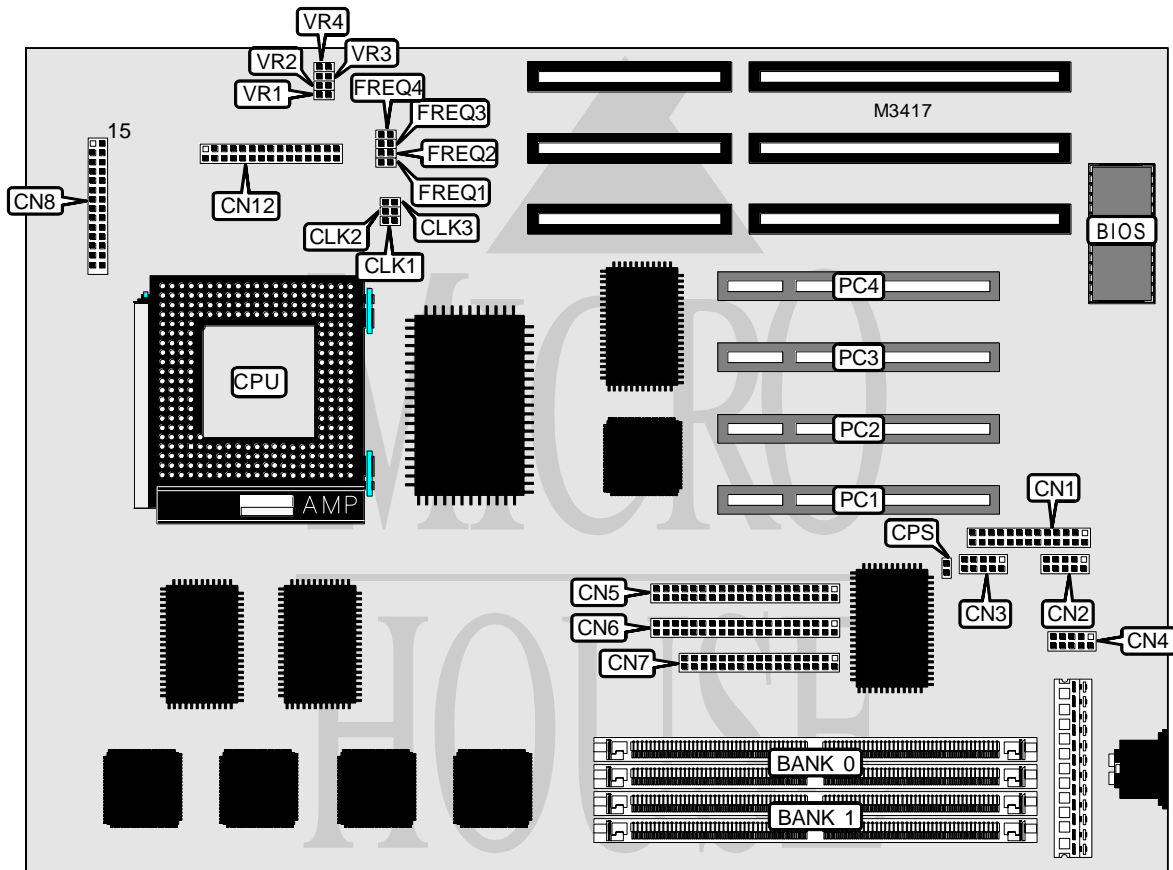


EVEREX SYSTEMS, INC. STEP SP/PRO

Processor	Pentium Pro
Processor Speed	150/166/180/200MHz
Chip Set	Intel
Video Chip Set	None
Maximum Onboard Memory	256MB (EDO supported)
Maximum Video Memory	None
Cache	256/512KB (on Pentium Pro CPU)
BIOS	Unidentified
Dimensions	330mm x 218mm
I/O Options	32-bit PCI slots (4), floppy drive interface, green PC connector, IDE interfaces (2), parallel port, serial ports (2), IR connector, VRM connector
NPU Options	None



Continued on next page . . .

EVEREX SYSTEMS, INC.
STEP SP/PRO

... continued from previous page

CONNECTIONS			
Purpose	Location	Purpose	Location
Parallel port	CN1	Turbo LED	CN8 pins 7 & 8
Serial port 1	CN2	Green PC connector	CN8 pins 10 & 11
Serial port 2	CN3	Speaker	CN8 pins 15 - 18
IR connector	CN4	IDE interface LED	CN8 pins 20 & 21
IDE interface 2	CN5	Reset switch	CN8 pins 27 & 28
IDE interface 1	CN6	VRM connector	CN12
Floppy drive interface	CN7	32-bit PCI slots	PC1 - PC4
Power LED & keylock	CN8 pins 1 - 5		

USER CONFIGURABLE SETTINGS		
Function	Label	Position
í Password normal operation	CPS	Open
Password clear	CPS	Closed

DRAM CONFIGURATION		
Size	Bank 0	Bank 1
16MB	(2) 2M x 36	None
16MB	(2) 1M x 36	(2) 1M x 36
32MB	(2) 4M x 36	None
32MB	(2) 2M x 36	(2) 2M x 36
64MB	(2) 8M x 36	None
64MB	(2) 4M x 36	(2) 4M x 36
128MB	(2) 8M x 36	(2) 8M x 36
128MB	(2) 16M x 36	None
256MB	(2) 16M x 36	(2) 16M x 36

CACHE CONFIGURATION
Note: 256KB/512KB cache is located on the Pentium Pro CPU.

CPU SPEED SELECTION					
CPU speed	Clock speed	Multiplier	CLK1	CLK2	CLK3
150MHz	60MHz	2.5x	Closed	Closed	Open
166MHz	66MHz	2.5x	Closed	Open	Open
180MHz	60MHz	3x	Closed	Closed	Open
200MHz	66MHz	3x	Closed	Open	Open

CPU SPEED SELECTION (CON'T)						
CPU speed	Clock speed	Multiplier	FREQ1	FREQ2	FREQ3	FREQ4
150MHz	60MHz	2.5x	Open	Closed	Closed	Closed
166MHz	66MHz	2.5x	Open	Closed	Closed	Closed
180MHz	60MHz	3x	Closed	Closed	Open	Closed
200MHz	66MHz	3x	Closed	Closed	Open	Closed

Continued on next page...

EVEREX SYSTEMS, INC.
STEP SP/PRO*... continued from previous page*

CPU VOLTAGE SELECTION				
Voltage	VR1	VR2	VR3	VR4
2.9v	Closed	Open	Open	Closed
3v	Open	Closed	Open	Closed
3.1v	Closed	Closed	Open	Closed
3.2v	Open	Open	Closed	Closed
3.3v	Closed	Open	Closed	Closed
3.4v	Open	Closed	Closed	Closed