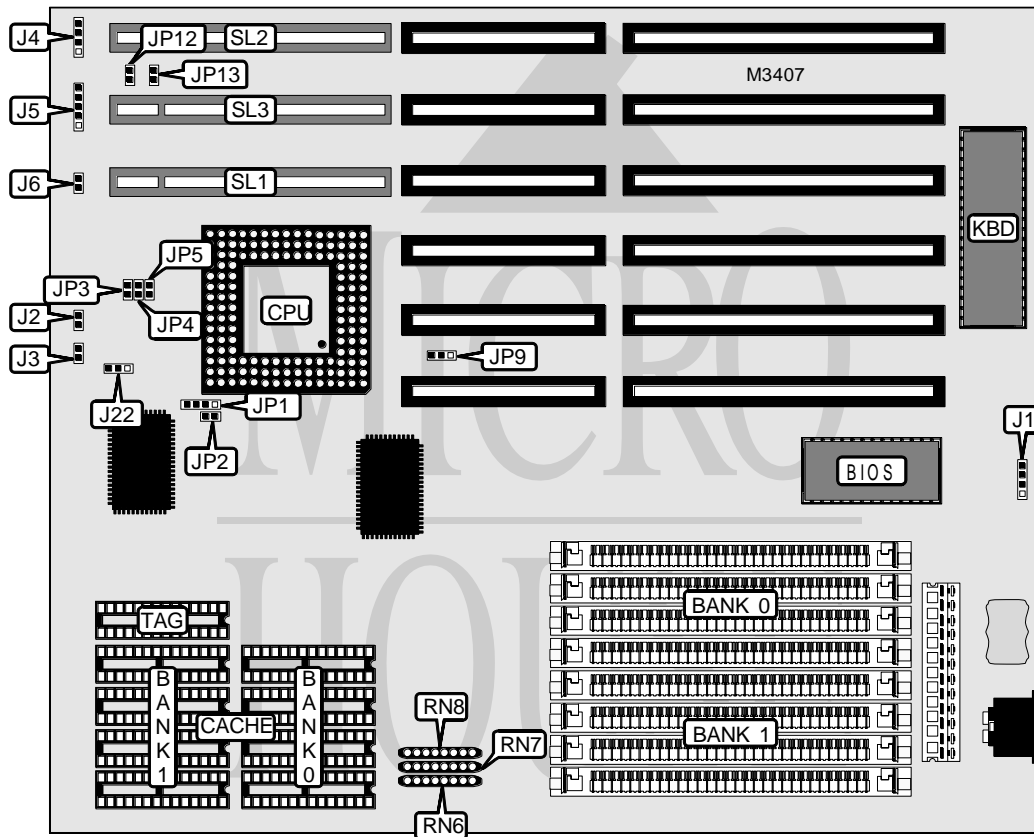


# UNIDENTIFIED 486UL (VER. 2)

<b>Processor</b>	80486SX/80487SX/ODP486/80486DX/80486DX2
<b>Processor Speed</b>	25/33/40/50(internal)/50/66(internal)MHz
<b>Chip Set</b>	UMC
<b>Video Chip Set</b>	None
<b>Maximum Onboard Memory</b>	64MB
<b>Maximum Video Memory</b>	None
<b>Cache</b>	64/128/256KB
<b>BIOS</b>	AMI/Award
<b>Dimensions</b>	250mm x 220mm
<b>I/O Options</b>	32-bit VESA local bus slots (3)
<b>NPU Options</b>	None



CONNECTIONS			
Purpose	Location	Purpose	Location
External battery	J1	Power LED & keylock	J5
Turbo LED	J2	Reset switch	J6
Turbo switch	J3	32-bit VESA local bus slots	SL1 - SL3
Speaker	J4		

Continued on next page. . .

# UNIDENTIFIED 486UL (VER. 2)

... continued from previous page

USER CONFIGURABLE SETTINGS		
Function	Label	Position
Turbo switch enabled/controlled by kbd CTRL, ALT - (low), CTRL, ALT + (high)	J3	Open
Turbo switch disabled	J3	Closed
Any VESA card installed	JP9	1 & 2
Weitek Power 9000 VESA card installed	JP9	2 & 3

DRAM CONFIGURATION		
Size	Bank 0	Bank 1
1MB	(4) 256K x 9	None
2MB	(4) 256K x 9	(4) 256K x 9
4MB	(4) 1M x 9	None
5MB	(4) 1M x 9	(4) 256K x 9
8MB	(4) 1M x 9	(4) 1M x 9
16MB	(4) 4M x 9	None
17MB	(4) 4M x 9	(4) 256K x 9
20MB	(4) 1M x 9	(4) 4M x 9
32MB	(4) 4M x 9	(4) 4M x 9
64MB	(4) 16M x 9	None

CACHE CONFIGURATION			
Size	Bank 0	Bank 1	TAG
64KB	(4) 8K x 8	(4) 8K x 8	(1) 8K x 8
128KB	(4) 32K x 8	None	(1) 8K x 8
256KB	(4) 32K x 8	(4) 32K x 8	(1) 32K x 8

CACHE RESISTOR CONFIGURATION			
Size	RN6	RN7	RN8
64KB	Installed	Not installed	Not installed
128KB	Not installed	Installed	Not installed
256KB	Not installed	Not installed	Installed

CPU SPEED SELECTION				
Speed	J22	JP3	JP4	JP5
25MHz	Pins 1 & 2 closed	Closed	Open	Open
33MHz	Pins 1 & 2 closed	Closed	Closed	Closed
40MHz	Pins 1 & 2 closed	Closed	Closed	Open
50iMHz	Pins 1 & 2 closed	Closed	Open	Open
50MHz	Pins 2 & 3 closed	Open	Open	Closed
66iMHz	Pins 1 & 2 closed	Closed	Closed	Closed

Continued on next page...

# UNIDENTIFIED

## 486UL (VER. 2)

... continued from previous page

CPU TYPE SELECTION		
Type	JP1	JP2
80486SX	Pins 2 & 3 closed	Open
80487SX	Pins 1 & 2, 3 & 4 closed	Pins 2 & 3 closed
ODP486	Pins 1 & 2, 3 & 4 closed	Pins 2 & 3 closed
80486DX	Pins 1 & 2, 3 & 4 closed	Pins 1 & 2 closed
80486DX2	Pins 1 & 2, 3 & 4 closed	Pins 1 & 2 closed

VL BUS WAIT STATE SELECTION	
Setting	JP13
0	Open
1	Closed

VL-BUS SPEED SELECTION	
CPU speed	JP12
<= 33MHz	Open
>33 MHz	Closed