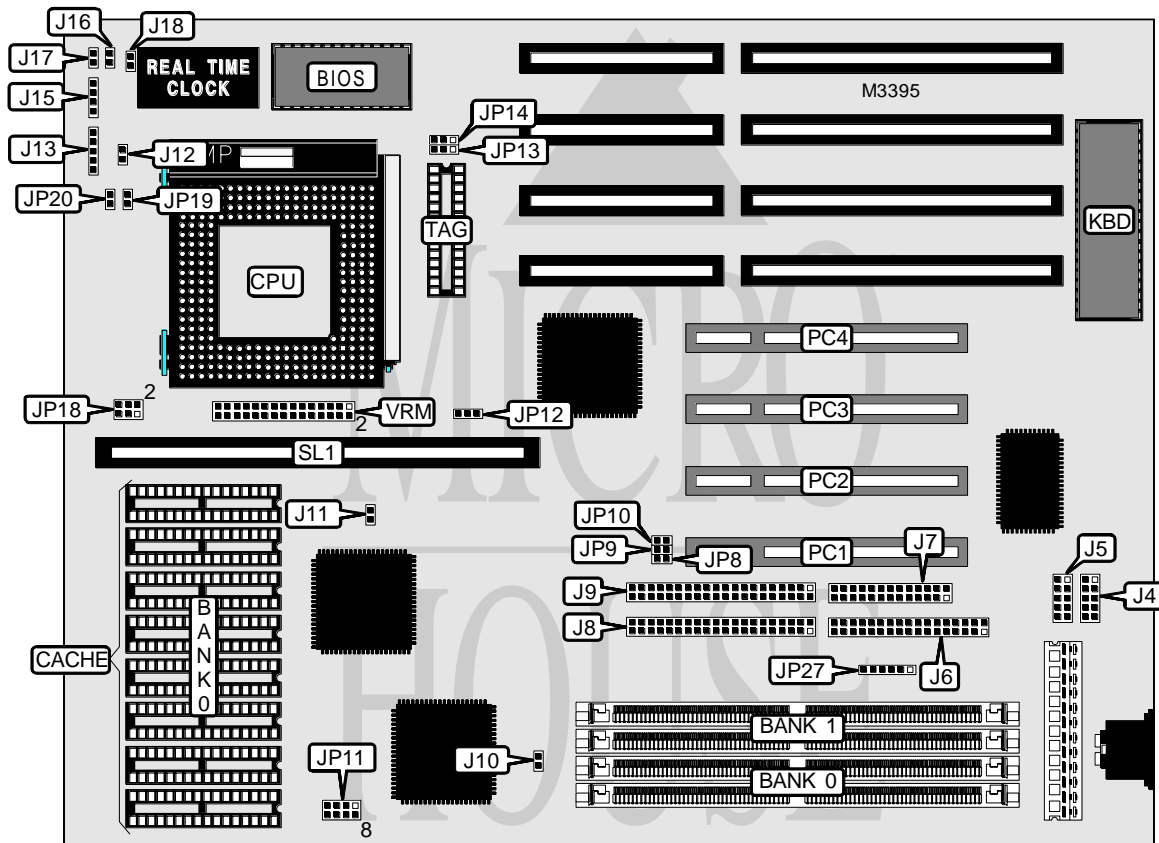


VISION TECHNOLOGIES INFINITY

Processor	Pentium
Processor Speed	75/90/100/120/133/150MHz
Chip Set	SIS
Video Chip Set	None
Maximum Onboard Memory	128MB (EDO supported)
Maximum Video Memory	None
Cache	256/512/1024KB
BIOS	Award
Dimensions	275mm x 220mm
I/O Options	32-bit PCI slots (4), floppy drive interface, green PC connector, IDE interfaces (2), parallel port, serial ports (2), cache slot, IR connector, VRM connector
NPU Options	None



Continued on next page . . .

VISION TECHNOLOGIES INFINITY

... continued from previous page

CONNECTIONS			
Purpose	Location	Purpose	Location
Serial port 1	J4	Power LED & keylock	J13
Serial port 2	J5	Speaker	J15
Floppy drive interface	J6	Reset switch	J16
Parallel port	J7	Turbo LED	J17
IDE interface 1	J8	IDE interface LED	J18
IDE interface 2	J9	IR connector	JP27
Green PC LED	J10	32-bit PCI slots	PC1 - PC4
Green PC connector	J11	Cache slot	SL1
Turbo switch	J12	VRM connector	VRM

USER CONFIGURABLE SETTINGS		
Function	Label	Position
Intel IR connector used	JP27	Pins 1 - 5 closed
HP IR connector used	JP27	Pins 3 - 6 closed

DRAM CONFIGURATION		
Size	Bank 0	Bank 1
4MB	None	(2) 512K x 36
4MB	(2) 512K x 36	None
4MB	(2) 256K x 36	(2) 256K x 36
6MB	(2) 512K x 36	(2) 256K x 36
6MB	(2) 256K x 36	(2) 512K x 36
8MB	(2) 1M x 36	None
8MB	(2) 512K x 36	(2) 512K x 36
10MB	(2) 1M x 36	(2) 256K x 36
10MB	(2) 256K x 36	(2) 1M x 36
12MB	(2) 1M x 36	(2) 512K x 36
12MB	(2) 512K x 36	(2) 1M x 36
16MB	(2) 2M x 36	None
16MB	(2) 1M x 36	(2) 1M x 36
18MB	(2) 2M x 36	(2) 256K x 36
18MB	(2) 256K x 36	(2) 2M x 36
20MB	(2) 2M x 36	(2) 512K x 36
20MB	(2) 512K x 36	(2) 2M x 36
24MB	(2) 2M x 36	(2) 1M x 36
24MB	(2) 1M x 36	(2) 2M x 36
32MB	(2) 4M x 36	None
32MB	(2) 2M x 36	(2) 2M x 36
34MB	(2) 4M x 36	(2) 256K x 36
34MB	(2) 256K x 36	(2) 4M x 36
36MB	(2) 4M x 36	(2) 512K x 36
36MB	(2) 512K x 36	(2) 4M x 36

Continued on next page...

VISION TECHNOLOGIES INFINITY

... continued from previous page

DRAM CONFIGURATION (CON'T)		
Size	Bank 0	Bank 1
40MB	(2) 4M x 36	(2) 1M x 36
40MB	(2) 1M x 36	(2) 4M x 36
48MB	(2) 4M x 36	(2) 2M x 36
48MB	(2) 2M x 36	(2) 4M x 36
64MB	(2) 8M x 36	None
64MB	(2) 4M x 36	(2) 4M x 36
66MB	(2) 8M x 36	(2) 256K x 36
66MB	(2) 256K x 36	(2) 8M x 36
68MB	(2) 8M x 36	(2) 512K x 36
68MB	(2) 512K x 36	(2) 8M x 36
72MB	(2) 8M x 36	(2) 1M x 36
72MB	(2) 1M x 36	(2) 8M x 36
80MB	(2) 8M x 36	(2) 2M x 36
80MB	(2) 2M x 36	(2) 8M x 36
96MB	(2) 8M x 36	(2) 4M x 36
96MB	(2) 4M x 36	(2) 8M x 36
128MB	(2) 8M x 36	(2) 8M x 36

Note: Board accepts EDO memory. Board also accepts x 32 SIMMs.

CACHE CONFIGURATION			
Size	Bank 0	TAG	SL1
256KB (A)	(8) 32K x 8	(1) 8K x 8	Not installed
256KB (B)	None	None	256KB module installed
512KB (A)	(8) 64K x 8	(1) 32K x 8	Not installed
512KB (B)	None	None	512KB module installed
1MB	(8) 128K x 8	(1) 32K x 8	Not installed

CACHE JUMPER CONFIGURATION		
Size	JP13	JP14
256KB (A)	Pins 1 & 2 closed	Pins 1 & 2 closed
512KB (A)	Pins 1 & 2 closed	Pins 2 & 3 closed
1MB	Pins 2 & 3 closed	Pins 2 & 3 closed

CACHE MODULE CONFIGURATION	
Type	JP12
Asynchronous	Pins 1 & 2 closed
Burst/pipeline burst	Pins 2 & 3 closed

CACHE VOLTAGE CONFIGURATION	
Voltage	JP11
Mixed voltage	Pins 1 & 8, 2 & 7 closed
3.3v	Pins 3 & 6, 4 & 5 closed

Continued on next page...

VISION TECHNOLOGIES INFINITY

... continued from previous page

CPU SPEED SELECTION						
CPU speed	Clock speed	Multiplier	JP9	JP10	JP19	JP20
75MHz	50MHz	1.5x	Closed	Closed	Open	Open
90MHz	60MHz	1.5x	Closed	Open	Open	Open
100MHz	66MHz	1.5x	Open	Closed	Open	Open
120MHz	60MHz	2x	Closed	Open	Closed	Open
133MHz	66MHz	2x	Open	Closed	Closed	Open
150MHz	60MHz	2.5x	Closed	Open	Closed	Closed

CPU VOLTAGE SELECTION	
Voltage	JP18
3.3v	Pins 1 & 2 closed
3.4v	Pins 3 & 4 closed
3.5v	Pins 5 & 6 closed

VRM SELECTION	
Setting	VRM
VRM not installed (using on board regulator)	Pins 6 & 7, 21 & 22 closed
VRM installed	Installed

PCI BUS CLOCK SELECTION	
Setting	JP8
PCI clock = sys clock/2 (60/66MHz sys clock)	Open
PCI clock = 33MHz (50MHz sys clock)	Closed