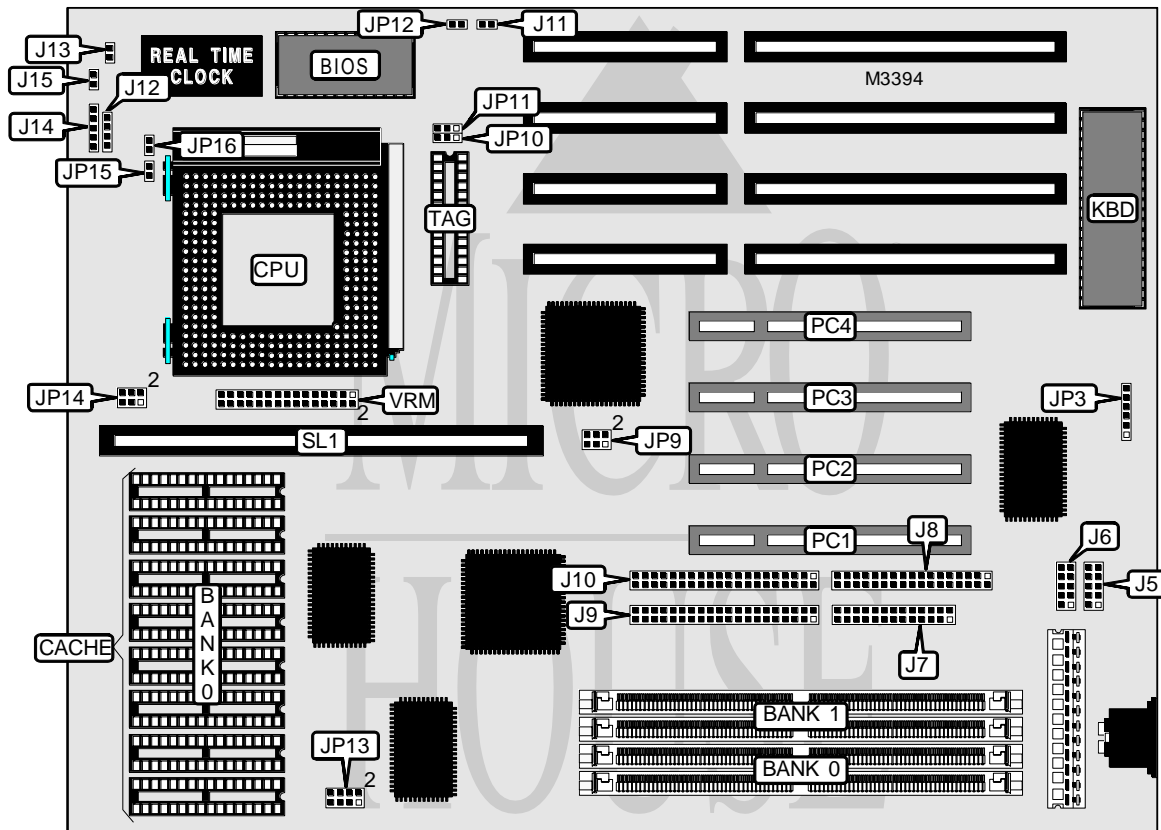


VISION TECHNOLOGIES VISION 2010

Processor	Pentium
Processor Speed	75/90/100/120/133/150MHz
Chip Set	Intel
Video Chip Set	None
Maximum Onboard Memory	128MB (EDO supported)
Maximum Video Memory	None
Cache	256/512KB
BIOS	Award
Dimensions	275mm x 220mm
I/O Options	32-bit PCI slots (4), floppy drive interface, green PC connector, IDE interfaces (2), parallel port, serial ports (2), cache slot, IR connector, VRM connector
NPU Options	None



Continued on next page . . .

VISION TECHNOLOGIES

VISION 2010

... continued from previous page

CONNECTIONS			
Purpose	Location	Purpose	Location
Serial port 1	J5	Turbo LED	J13
Serial port 2	J6	Power LED & keylock	J14
Parallel port	J7	Reset switch	J15
Floppy drive interface	J8	IR connector	JP3
IDE interface 1	J9	Green PC connector	JP12
IDE interface 2	J10	32-bit PCI slots	PC1 - PC4
IDE interface LED	J11	Cache slot	SL1
Speaker	J12	VRM connector	VRM

USER CONFIGURABLE SETTINGS		
Function	Label	Position
Intel IR connector used	JP3	Pins 1 - 5 closed
HP IR connector used	JP3	Pins 3 - 6 closed

DRAM CONFIGURATION		
Size	Bank 0	Bank 1
4MB	None	(2) 512K x 36
4MB	(2) 512K x 36	None
4MB	(2) 256K x 36	(2) 256K x 36
6MB	(2) 512K x 36	(2) 256K x 36
6MB	(2) 256K x 36	(2) 512K x 36
8MB	(2) 1M x 36	None
8MB	(2) 512K x 36	(2) 512K x 36
10MB	(2) 1M x 36	(2) 256K x 36
10MB	(2) 256K x 36	(2) 1M x 36
12MB	(2) 1M x 36	(2) 512K x 36
12MB	(2) 512K x 36	(2) 1M x 36
16MB	(2) 2M x 36	None
16MB	(2) 1M x 36	(2) 1M x 36
18MB	(2) 2M x 36	(2) 256K x 36
18MB	(2) 256K x 36	(2) 2M x 36
20MB	(2) 2M x 36	(2) 512K x 36
20MB	(2) 512K x 36	(2) 2M x 36
24MB	(2) 2M x 36	(2) 1M x 36
24MB	(2) 1M x 36	(2) 2M x 36
32MB	(2) 4M x 36	None
32MB	(2) 2M x 36	(2) 2M x 36
34MB	(2) 4M x 36	(2) 256K x 36
34MB	(2) 256K x 36	(2) 4M x 36
36MB	(2) 4M x 36	(2) 512K x 36
36MB	(2) 512K x 36	(2) 4M x 36
40MB	(2) 4M x 36	(2) 1M x 36

Continued on next page...

VISION TECHNOLOGIES

VISION 2010

... continued from previous page

DRAM CONFIGURATION (CON'T)		
Size	Bank 0	Bank 1
40MB	(2) 1M x 36	(2) 4M x 36
48MB	(2) 4M x 36	(2) 2M x 36
48MB	(2) 2M x 36	(2) 4M x 36
64MB	(2) 8M x 36	None
64MB	(2) 4M x 36	(2) 4M x 36
66MB	(2) 8M x 36	(2) 256K x 36
66MB	(2) 256K x 36	(2) 8M x 36
68MB	(2) 8M x 36	(2) 512K x 36
68MB	(2) 512K x 36	(2) 8M x 36
72MB	(2) 8M x 36	(2) 1M x 36
72MB	(2) 1M x 36	(2) 8M x 36
80MB	(2) 8M x 36	(2) 2M x 36
80MB	(2) 2M x 36	(2) 8M x 36
96MB	(2) 8M x 36	(2) 4M x 36
96MB	(2) 4M x 36	(2) 8M x 36
128MB	(2) 8M x 36	(2) 8M x 36

Note: Board accepts EDO memory. Board also accepts x 32 SIMMs.

CACHE CONFIGURATION			
Size	Bank 0	TAG	SL1
256KB (A)	(8) 32K x 8	(1) 8K x 8	Not installed
256KB (B)	None	None	256KB module installed
512KB (A)	(8) 64K x 8	(1) 16K/32K x 8	Not installed
512KB (B)	None	None	512KB module installed

CACHE JUMPER CONFIGURATION	
Size	JP10
256KB	Pins 2 & 3 closed
512KB	Pins 1 & 2 closed

CACHE VOLTAGE CONFIGURATION	
Voltage	JP13
Mixed voltage	Pins 1 & 2, 3 & 4 closed
3.3v	Pins 5 & 6, 7 & 8 closed

Continued on next page...

VISION TECHNOLOGIES

VISION 2010

... continued from previous page

CPU SPEED SELECTION						
CPU speed	Clock speed	Multiplier	JP9	JP11	JP15	JP16
75MHz	50MHz	1.5x	3 & 5, 4 & 6	1 & 2	Open	Open
90MHz	60MHz	1.5x	1 & 3, 4 & 6	2 & 3	Open	Open
100MHz	66MHz	1.5x	3 & 5, 2 & 4	2 & 3	Open	Open
120MHz	60MHz	2x	1 & 3, 4 & 6	2 & 3	Open	Closed
133MHz	66MHz	2x	3 & 5, 2 & 4	2 & 3	Open	Closed
150MHz	60MHz	2.5x	1 & 3, 4 & 6	2 & 3	Closed	Closed

Note: Pins designated should be in the closed position.

CPU VOLTAGE SELECTION	
Voltage	JP14
3.3v	Pins 1 & 2 closed
3.4v	Pins 3 & 4 closed
3.5v	Pins 5 & 6 closed

VRM SELECTION	
Setting	VRM
VRM not installed (using on board regulator)	Pins 6 & 7, 21 & 22 closed
VRM installed	Installed