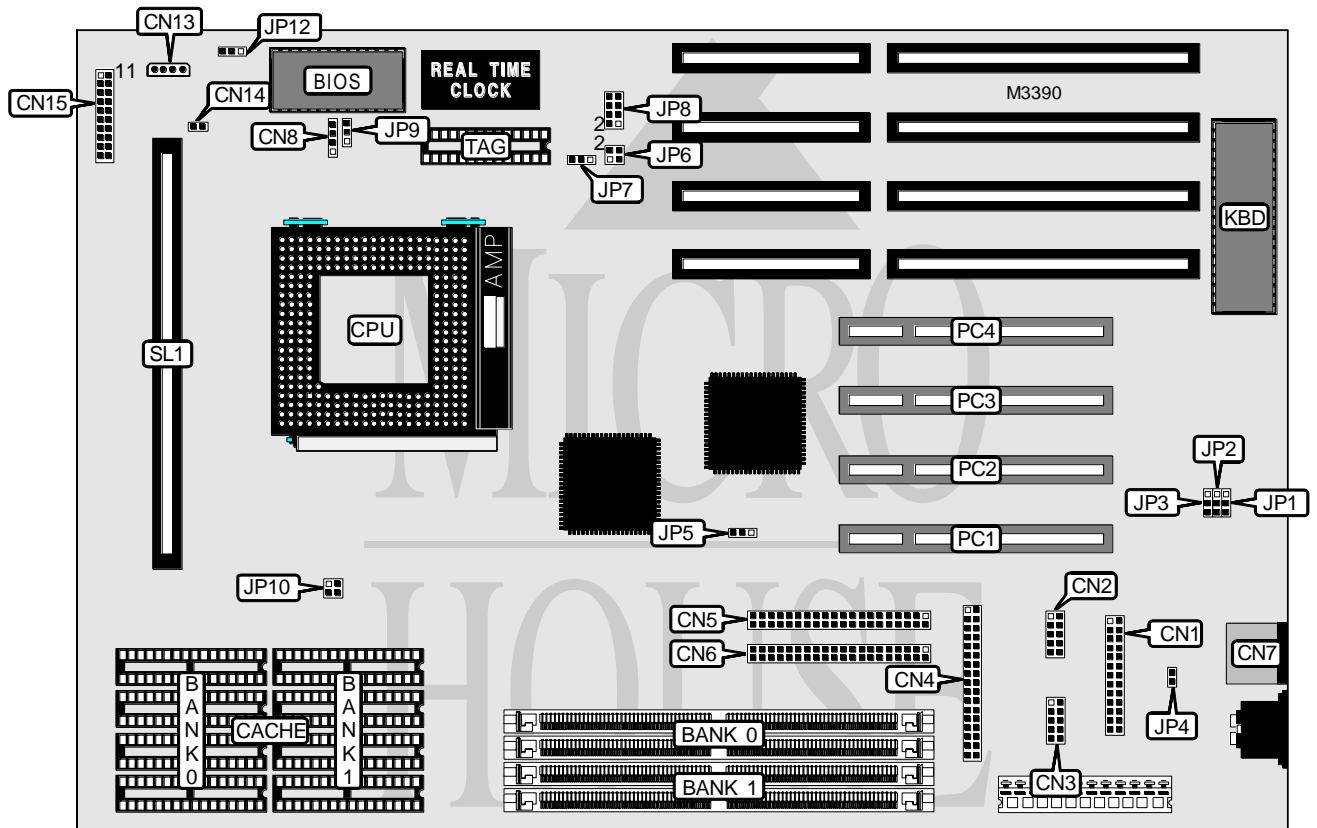


ACER, INC. AP5C/P

Processor	Pentium
Processor Speed	75/90/100/120/133/150/166MHz
Chip Set	Intel
Video Chip Set	None
Maximum Onboard Memory	128MB (EDO supported)
Maximum Video Memory	None
Cache	256/512KB
BIOS	AMI
Dimensions	330mm x 220mm
I/O Options	32-bit PCI slots (4), floppy drive interface, green PC connector, IDE interfaces (2), parallel port, PS/2 mouse port, serial ports (2), cache slot
NPU Options	None



Continued on next page. . .

ACER, INC.

AP5C/P

... continued from previous page

CONNECTIONS			
Purpose	Location	Purpose	Location
Parallel port	CN1	Chassis fan power	CN14
Serial port 1	CN2	Power LED & keylock	CN15 pins 1 - 5
Serial port 2	CN3	Speaker	CN15 pins 7 - 10
Floppy drive interface	CN4	Turbo/green PC LED	CN15 pins 12 - 13
IDE interface 1	CN5	Green PC connector	CN15 pins 15 - 17
IDE interface 2	CN6	Reset switch	CN15 pins 19 & 20
PS/2 mouse port	CN7	32-bit PCI slots	PC1 - PC4
IDE interface LED	CN8	Cache slot	SL1
Chassis fan power	CN13		

Note: If connector for CN8 is 12-pin, connect red wire to pin 11.

USER CONFIGURABLE SETTINGS		
Function	Label	Position
On board I/O controller enabled	JP3	Pins 1 & 2 closed
On board I/O controller disabled	JP3	Pins 2 & 3 closed
PS/2 mouse enabled	JP4	Closed
PS/2 mouse disabled	JP4	Open
í Flash BIOS voltage select 5v	JP9	Pins 1 & 2 closed
Flash BIOS voltage select 12v	JP9	Pins 2 & 3 closed
Jumper information unidentified	JP10	Unidentified
í CMOS memory normal operation	JP12	Pins 1 & 2 closed
CMOS memory clear	JP12	Pins 2 & 3 closed

DRAM CONFIGURATION		
Size	Bank 0	Bank 1
8MB	(2) 1M x 36	None
16MB	(2) 2M x 36	None
16MB	(2) 1M x 36	(2) 1M x 36
24MB	(2) 2M x 36	(2) 1M x 36
32MB	(2) 4M x 36	None
32MB	(2) 2M x 36	(2) 2M x 36
40MB	(2) 4M x 36	(2) 1M x 36
48MB	(2) 4M x 36	(2) 2M x 36
64MB	(2) 8M x 36	None
64MB	(2) 4M x 36	(2) 4M x 36
72MB	(2) 8M x 36	(2) 1M x 36
80MB	(2) 8M x 36	(2) 2M x 36
96MB	(2) 8M x 36	(2) 4M x 36
128MB	(2) 8M x 36	(2) 8M x 36

Note: Board also accepts x 32 SIMMs.

Continued on next page. . .

ACER, INC.
AP5C/P

... continued from previous page

CACHE CONFIGURATION				
Size	Bank 0	Bank 1	TAG	SL1
256KB (A)	(4) 32K x 8	(4) 32K x 8	(1) 16K/32K x 8	Not installed
256KB (B)	None	None	None	Installed
512KB	(4) 64K x 8	(4) 64K x 8	(1) 16K/32K x 8	Not installed

CACHE JUMPER CONFIGURATION	
Size	JP7
256KB (A)	Pins 1 & 2 closed
256KB (B)	Pins 1 & 2 closed
512KB	Pins 2 & 3 closed

CPU SPEED SELECTION			
Speed	JP5	JP6	JP8
75MHz	Pins 1 & 2 closed	Pins 1 & 2, 3 & 4 closed	Pins 1 & 2, 3 & 4 closed
90MHz	Pins 2 & 3 closed	Pins 1 & 2 closed	Pins 1 & 2, 3 & 4 closed
100MHz	Pins 2 & 3 closed	Pins 3 & 4 closed	Pins 1 & 2, 3 & 4 closed
120MHz	Pins 2 & 3 closed	Pins 1 & 2 closed	Pins 3 & 4, 5 & 6 closed
133MHz	Pins 2 & 3 closed	Pins 3 & 4 closed	Pins 3 & 4, 5 & 6 closed
150MHz	Pins 2 & 3 closed	Pins 1 & 2 closed	Pins 5 & 6, 7 & 8 closed
166MHz	Pins 2 & 3 closed	Pins 3 & 4 closed	Pins 5 & 6, 7 & 8 closed

DMA CHANNEL SELECTION		
Channel	JP1	JP2
1	Pins 2 & 3 closed	Pins 2 & 3 closed
3	Pins 1 & 2 closed	Pins 1 & 2 closed