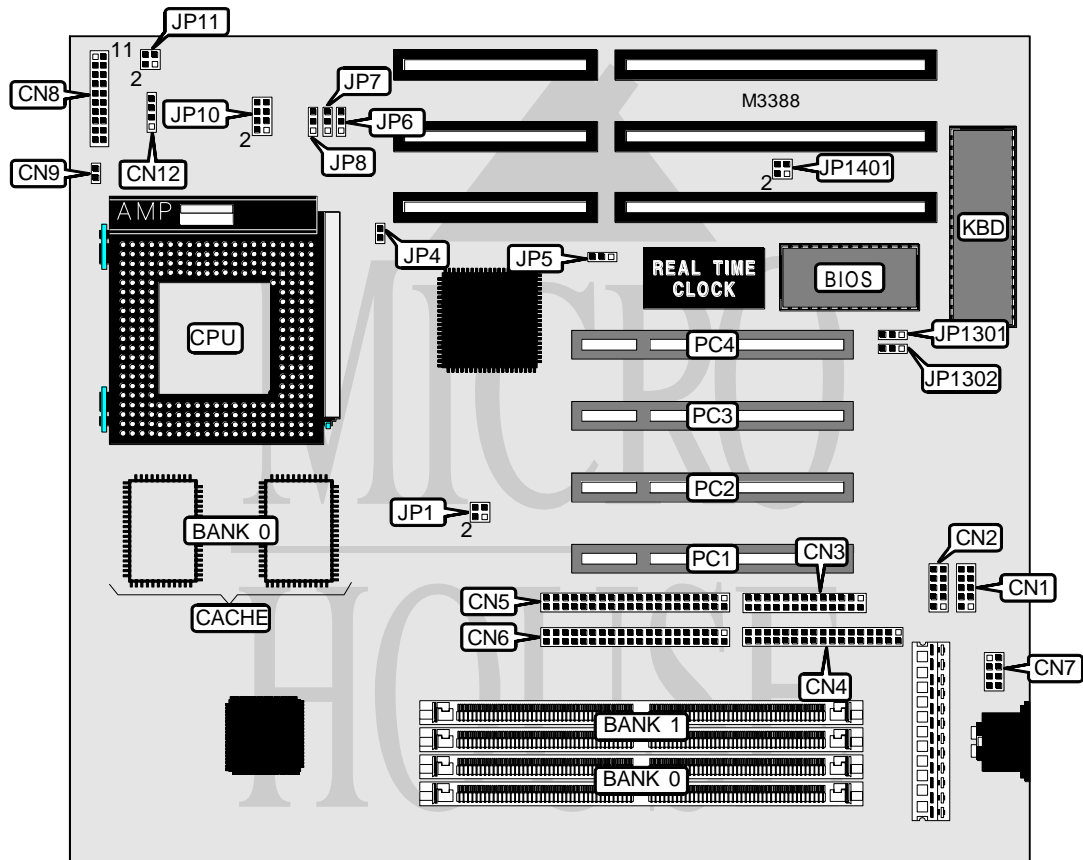


ACER, INC. A P 5 3

Processor	Pentium
Processor Speed	75/90/100/120/133/150/166MHz
Chip Set	Intel
Video Chip Set	None
Maximum Onboard Memory	512MB
Maximum Video Memory	None
Cache	256KB
BIOS	AMI
Dimensions	250mm x 220mm
I/O Options	32-bit PCI slots (4), floppy drive interface, green PC connector, IDE interfaces (2), parallel port, PS/2 mouse interface, serial ports (2)
NPU Options	None



Continued on next page. . .

ACER, INC.
A P 5 3

... continued from previous page

CONNECTIONS			
Purpose	Location	Purpose	Location
Serial port 2	CN1	Speaker	CN8 pins 7 - 10
Serial port 1	CN2	Turbo/green PC LED	CN8 pins 12 & 13
Parallel port	CN3	Turbo switch/green PC connector	CN8 pins 15 - 17
Floppy drive interface	CN4	Reset switch	CN8 pins 19 & 20
IDE interface 2	CN5	Chassis fan power	CN9
IDE interface 1	CN6	IDE interface LED	CN12
PS/2 mouse interface	CN7	32-bit PCI slots	PC1 - PC4
Power LED & keylock	CN8 pins 1 - 5		

Note: If connector for CN8 is 12-pin, connect red wire to pin 11.

USER CONFIGURABLE SETTINGS		
Function	Label	Position
í PS/2 mouse IRQ12 enabled	JP4	Closed
PS/2 mouse IRQ12 disabled	JP4	Open
í CMOS memory normal operation	JP5	Pins 1 & 2 closed
CMOS memory clear	JP5	Pins 2 & 3 closed
í On board I/O controller enabled	JP8	Pins 1 & 2 closed
On board I/O controller disabled	JP8	Pins 2 & 3 closed
í Keyboard clock select ISA clock	JP1401	Pins 1 & 2 closed
Keyboard clock select 12MHz clock	JP1401	Pins 3 & 4 closed

DRAM CONFIGURATION		
Size	Bank 0	Bank 1
4MB	(2) 512K x 36	None
8MB	(2) 1M x 36	None
8MB	(2) 512K x 36	(2) 512K x 36
12MB	(2) 512K x 36	(2) 1M x 36
16MB	(2) 2M x 36	None
16MB	(2) 1M x 36	(2) 1M x 36
20MB	(2) 512K x 36	(2) 2M x 36
24MB	(2) 1M x 36	(2) 2M x 36
32MB	(2) 4M x 36	None
32MB	(2) 2M x 36	(2) 2M x 36
36MB	(2) 512K x 36	(2) 4M x 36
40MB	(2) 1M x 36	(2) 4M x 36
48MB	(2) 2M x 36	(2) 4M x 36
64MB	(2) 8M x 36	None
64MB	(2) 4M x 36	(2) 4M x 36
68MB	(2) 512K x 36	(2) 8M x 36
72MB	(2) 1M x 36	(2) 8M x 36
80MB	(2) 2M x 36	(2) 8M x 36
96MB	(2) 4M x 36	(2) 8M x 36
128MB	(2) 8M x 36	(2) 8M x 36

Continued on next page...

ACER, INC.
A P 5 3

... continued from previous page

DRAM CONFIGURATION (CON'T)		
Size	Bank 0	Bank 1
128MB	(2) 16M x 36	None
136MB	(2) 1M x 36	(2) 16M x 36
144MB	(2) 2M x 36	(2) 16M x 36
160MB	(2) 4M x 36	(2) 16M x 36
256MB	(2) 16M x 36	(2) 16M x 36
256MB	(2) 32M x 36	None
264MB	(2) 1M x 36	(2) 32M x 36
272MB	(2) 2M x 36	(2) 32M x 36
288MB	(2) 4M x 36	(2) 32M x 36
320MB	(2) 8M x 36	(2) 32M x 36
384MB	(2) 16M x 36	(2) 32M x 36
512MB	(2) 32M x 36	(2) 32M x 36

CACHE CONFIGURATION	
Size	Bank 0
256KB	(2) 32K x 32

CPU SPEED SELECTION		
Speed	JP1	JP10
75MHz	Pins 1 & 2, 3 & 4 closed	Pins 1 & 2, 3 & 4 closed
90MHz	Pins 1 & 2 closed	Pins 1 & 2, 3 & 4 closed
100MHz	Pins 3 & 4 closed	Pins 1 & 2, 3 & 4 closed
120MHz	Pins 1 & 2 closed	Pins 3 & 4, 5 & 6 closed
133MHz	Pins 3 & 4 closed	Pins 3 & 4, 5 & 6 closed
150MHz	Pins 1 & 2 closed	Pins 5 & 6, 7 & 8 closed
166MHz	Pins 3 & 4 closed	Pins 5 & 6, 7 & 8 closed

CPU VOLTAGE SELECTION	
Voltage	JP11
3.45v	Pins 1 & 2 closed
3.52v	Pins 3 & 4 closed

DMA CHANNEL SELECTION		
Channel	JP6	JP7
1	Pins 2 & 3 closed	Pins 2 & 3 closed
í 3	Pins 1 & 2 closed	Pins 1 & 2 closed

FLASH BIOS VOLTAGE SELECTION		
Voltage	JP1301	JP1302
í 5v	Pins 1 & 2 closed	Pins 1 & 2 closed
12v	Pins 2 & 3 closed	Pins 1 & 2 closed