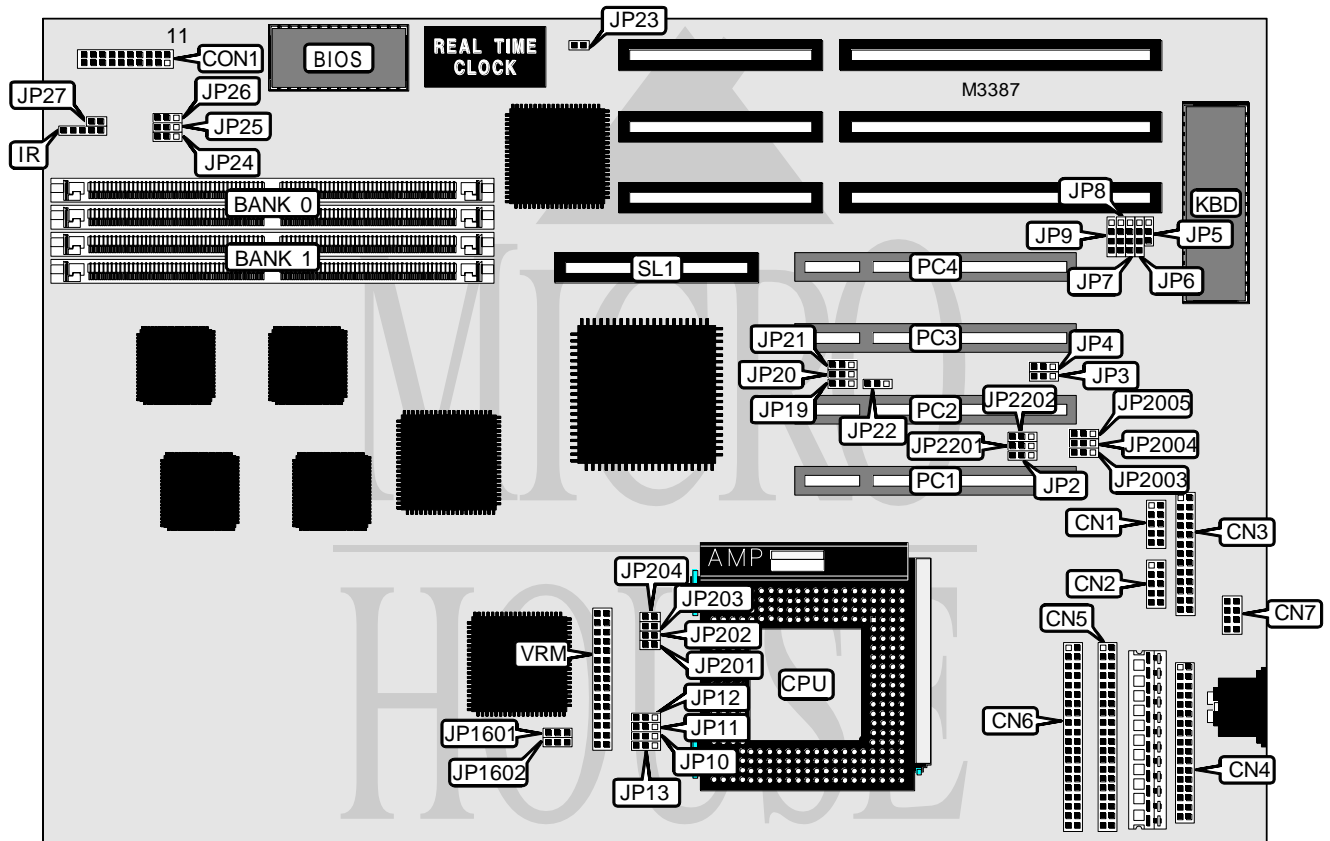


ASUS COMPUTER INTERNATIONAL

P/I - P 6 R P 4

Processor	Pentium Pro
Processor Speed	150/166MHz
Chip Set	Intel
Video Chip Set	None
Maximum Onboard Memory	512MB
Maximum Video Memory	None
Cache	256/512KB (on Pentium Pro CPU)
BIOS	AMI
Dimensions	330mm x 218mm
I/O Options	32-bit PCI slots (4), floppy drive interface, green PC connector, IDE interfaces (2), parallel port, PS/2 mouse interface, serial ports (2), IR connector, MediaBus connector, VRM connector
NPU Options	None



Continued on next page . . .

ASUS COMPUTER INTERNATIONAL

P / I - P 6 R P 4

... continued from previous page

CONNECTIONS			
Purpose	Location	Purpose	Location
Serial port 1	CN1	Green PC connector	CON1 pins 14 & 15
Serial port 2	CN2	Reset switch	CON1 pins 19 & 20
Parallel port	CN3	IDE interface LED	JP27
Floppy drive interface	CN4	Chassis fan power	JP1601
IDE interface 2	CN5	Chassis fan power	JP1602
IDE interface 1	CN6	IR connector	IR
PS/2 mouse interface	CN7	32-bit PCI slots	PC1 - PC4
Power LED & keylock	CON1 pins 1 - 5	MediaBus slot	SL1
Speaker	CON1 pins 7 - 10	VRM connector	VRM
Turbo LED	CON1 pins 12 & 13		

USER CONFIGURABLE SETTINGS		
Function	Label	Position
í IDE interface enabled	JP2	Pins 1 & 2 closed
IDE interface disabled	JP2	Pins 2 & 3 closed
í PS/2 mouse IRQ enabled	JP5	Pins 1 & 2 closed
PS/2 mouse IRQ disabled	JP5	Pins 2 & 3 closed
í CMOS memory normal operation	JP23	Open
CMOS memory clear	JP23	Closed
í Flash BIOS voltage select 5v	JP24	Pins 1 & 2 closed
Flash BIOS voltage select 12v	JP24	Pins 2 & 3 closed
í Flash BIOS write protect enabled	JP25	Pins 1 & 2 closed
Flash BIOS write protect disabled	JP25	Pins 2 & 3 closed
í Flash BIOS boot block write disabled	JP26	Pins 1 & 2 closed
Flash BIOS boot block write enabled	JP26	Pins 2 & 3 closed
í On board I/O enabled	JP2005	Pins 1 & 2 closed
On board I/O disabled	JP2005	Pins 2 & 3 closed

DRAM CONFIGURATION		
Size	Bank 0	Bank 1
8MB	(2) 1M x 36	None
16MB	(2) 2M x 36	None
16MB	(2) 1M x 36	(2) 1M x 36
32MB	(2) 4M x 36	None
32MB	(2) 2M x 36	(2) 2M x 36
64MB	(2) 8M x 36	None
64MB	(2) 4M x 36	(2) 4M x 36
128MB	(2) 8M x 36	(2) 8M x 36
128MB	(2) 16M x 36	None
256MB	(2) 16M x 36	(2) 16M x 36
256MB	(2) 32M x 36	None
512MB	(2) 32M x 36	(2) 32M x 36

Continued on next page...

ASUS COMPUTER INTERNATIONAL

P/I - P 6 R P 4

... continued from previous page

CACHE CONFIGURATION

Note: 256KB/512KB cache is located on the Pentium Pro CPU.

CPU BUS CORE SELECTION

Bus:core	Bus	CPU core	JP19	JP20	JP21	JP22
1/2	60MHz/66MHz	120MHz/133MHz	2 & 3	2 & 3	2 & 3	2 & 3
1/3	60MHz/66MHz	180MHz/200MHz	2 & 3	2 & 3	2 & 3	1 & 2
1/4	N/A	N/A	2 & 3	1 & 2	2 & 3	2 & 3
1/5	N/A	N/A	2 & 3	1 & 2	2 & 3	1 & 2
2/5	60MHz/66MHz	150MHz/166MHz	1 & 2	2 & 3	2 & 3	2 & 3
2/7	N/A	N/A	1 & 2	2 & 3	2 & 3	1 & 2

Note: Pins designated should be in the closed position.

CPU VOLTAGE SELECTION

Voltage	JP10	JP11	JP12	JP13
VID	Pins 1 & 2 closed	Pins 1 & 2 closed	Pins 1 & 2 closed	Pins 1 & 2 closed
2.1v	Open	Open	Open	Pins 2 & 3 closed
2.2v	Open	Open	Pins 2 & 3 closed	Open
2.3v	Open	Open	Pins 2 & 3 closed	Pins 2 & 3 closed
2.4v	Open	Pins 2 & 3 closed	Open	Open
2.5v	Open	Pins 2 & 3 closed	Open	Pins 2 & 3 closed
2.6v	Open	Pins 2 & 3 closed	Pins 2 & 3 closed	Open
2.7v	Open	Pins 2 & 3 closed	Pins 2 & 3 closed	Pins 2 & 3 closed
2.8v	Pins 2 & 3 closed	Open	Open	Open
2.9v	Pins 2 & 3 closed	Open	Open	Pins 2 & 3 closed
3.0v	Pins 2 & 3 closed	Open	Pins 2 & 3 closed	Open
3.1v	Pins 2 & 3 closed	Open	Pins 2 & 3 closed	Pins 2 & 3 closed
3.2v	Pins 2 & 3 closed	Pins 2 & 3 closed	Open	Open
3.3v	Pins 2 & 3 closed	Pins 2 & 3 closed	Open	Pins 2 & 3 closed
3.4v	Pins 2 & 3 closed	Pins 2 & 3 closed	Pins 2 & 3 closed	Open
3.5v	Pins 2 & 3 closed	Pins 2 & 3 closed	Pins 2 & 3 closed	Pins 2 & 3 closed

CPU VOLTAGE IDENTIFICATION SELECTION

Setting	JP201	JP202	JP203	JP204
Pull high disabled	Open	Open	Open	Open
Pull high enabled	Closed	Closed	Closed	Closed

DMA CHANNEL SELECTION

Channel	JP3	JP4
1	Pins 1 & 2 closed	Pins 1 & 2 closed
3	Pins 2 & 3 closed	Pins 2 & 3 closed

Continued on next page...

ASUS COMPUTER INTERNATIONAL

P/I - P 6 R P 4

... continued from previous page

PCI MASTER/SLAVE SELECTION			
Master	Slave	JP2201	JP2202
PCI IDE	PCI slot 1	Pins 1 & 2 closed	Pins 1 & 2 closed
PCI slot 1	PCI IDE	Pins 2 & 3 closed	Pins 2 & 3 closed

PCI IRQ SELECTION					
Setting	IRQ	JP6	JP7	JP8	JP9
PCI 1	IRQ14	1 & 2	N/A	N/A	N/A
PCI 1	IRQ15	N/A	1 & 2	N/A	N/A
PCI 2	IRQ14	3 & 4	N/A	N/A	N/A
PCI 2	IRQ15	N/A	3 & 4	N/A	N/A
PCI 3	IRQ14	N/A	N/A	1 & 2	N/A
PCI 3	IRQ15	N/A	N/A	N/A	1 & 2
PCI 4	IRQ14	N/A	N/A	3 & 4	N/A
PCI 4	IRQ15	N/A	N/A	N/A	3 & 4
IRQ routing by chipset	IRQ14	2 & 3	N/A	2 & 3	N/A
í IRQ routing by chipset	IRQ15	N/A	2 & 3	N/A	2 & 3

Note: Pins designated should be in the closed position.

SERIAL PORT 2 SELECTION		
Setting	JP2003	JP2004
í Used as COM2	Pins 1 & 2 closed	Pins 1 & 2 closed
Used as IR connector	Pins 2 & 3 closed	Pins 2 & 3 closed