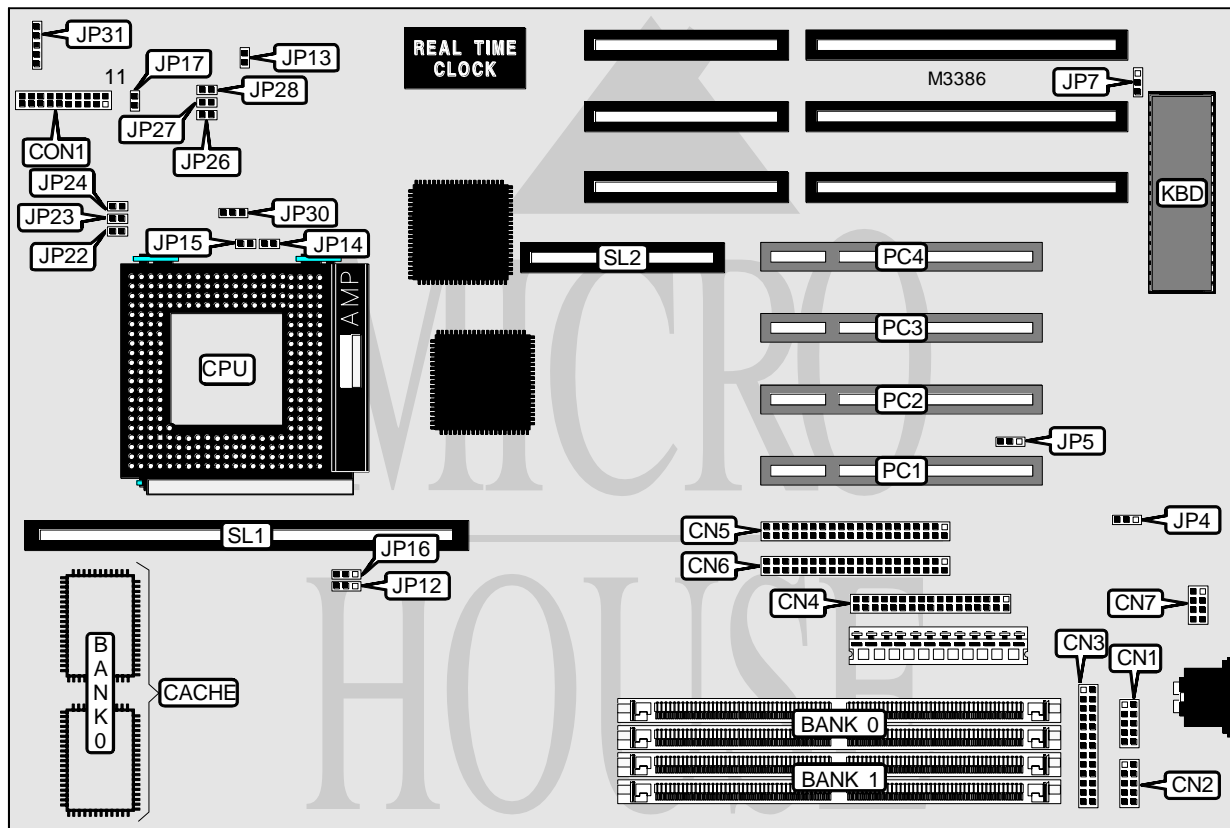


# ASUS COMPUTER INTERNATIONAL

## P/I - P 5 5 T P 4 N

<b>Processor</b>	Pentium
<b>Processor Speed</b>	75/90/100/120/133/150/166MHz
<b>Chip Set</b>	Intel
<b>Video Chip Set</b>	None
<b>Maximum Onboard Memory</b>	128MB DRAM (EDO supported)
<b>Maximum Video Memory</b>	None
<b>Cache</b>	256/5128KB
<b>BIOS</b>	Award
<b>Dimensions</b>	330mm x 218mm
<b>I/O Options</b>	32-bit PCI slots (4), floppy drive interface, green PC connector, IDE interfaces (2), parallel port, PS/2 mouse interface, serial ports (2), cache slot, IR connector, MediaBus slot
<b>NPU Options</b>	None



*Continued on next page...*

# ASUS COMPUTER INTERNATIONAL

## P / I - P 5 5 T P 4 N

... continued from previous page

CONNECTIONS			
Purpose	Location	Purpose	Location
Serial port 1	CN1	Turbo LED	CON1 pins 12 & 13
Serial port 2	CN2	Green PC connector	CON1 pins 14 & 15
Parallel port	CN3	Reset switch	CON1 pins 19 & 20
Floppy drive interface	CN4	IDE interface LED	JP17
IDE interface 1	CN5	Chassis fan power	JP30
IDE interface 2	CN6	IR connector	JP31
PS/2 mouse interface	CN7	32-bit PCI slots	PC1 - PC4
Power LED & keylock	CON1 pins 1 - 5	Cache slot	SL1
Speaker	CON1 pins 7 - 10	MediaBus slot	SL2

USER CONFIGURABLE SETTINGS		
Function	Label	Position
í On board multi I/O enabled	JP4	Pins 1 & 2 closed
On board multi I/O disabled	JP4	Pins 2 & 3 closed
í Flash BIOS write protect disabled	JP5	Pins 1 & 2 closed
Flash BIOS write protect enabled	JP5	Pins 2 & 3 closed
í PS/2 mouse IRQ12 disabled	JP7	Pins 2 & 3 closed
PS/2 mouse IRQ12 enabled	JP7	Pins 1 & 2 closed
í CMOS memory normal operation	JP13	Open
CMOS memory clear	JP13	Closed

DRAM CONFIGURATION		
Size	Bank 0	Bank 1
8MB	(2) 1M x 36	None
8MB	None	(2) 1M x 36
16MB	(2) 2M x 36	None
16MB	None	(2) 2M x 36
16MB	(2) 1M x 36	(2) 1M x 36
24MB	(2) 2M x 36	(2) 1M x 36
24MB	(2) 1M x 36	(2) 2M x 36
32MB	(2) 4M x 36	None
32MB	(2) 2M x 36	(2) 2M x 36
40MB	(2) 4M x 36	(2) 1M x 36
40MB	(2) 1M x 36	(2) 4M x 36
48MB	(2) 4M x 36	(2) 2M x 36
48MB	(2) 2M x 36	(2) 4M x 36
64MB	(2) 8M x 36	None
64MB	None	(2) 8M x 36
64MB	(2) 4M x 36	(2) 4M x 36
72MB	(2) 8M x 36	(2) 1M x 36
72MB	(2) 1M x 36	(2) 8M x 36
80MB	(2) 8M x 36	(2) 2M x 36

Continued on next page...

# ASUS COMPUTER INTERNATIONAL

## P/I - P 5 5 T P 4 N

... continued from previous page

DRAM CONFIGURATION (CON'T)		
Size	Bank 0	Bank 1
80MB	(2) 2M x 36	(2) 8M x 36
96MB	(2) 8M x 36	(2) 4M x 36
96MB	(2) 4M x 36	(2) 8M x 36
128MB	(2) 8M x 36	(2) 8M x 36

Note: Board accepts EDO memory.

CACHE CONFIGURATION		
Size	Bank 0	SL1
256KB (A)	(2) 32K x 32	None
256KB (B)	None	256KB module installed
512KB (A)	(2) 32K x 32	256KB module installed
512KB (B)	None	512KB module installed

CACHE JUMPER CONFIGURATION		
Size	JP12	JP16
256KB (A/B)	Pins 2 & 3 closed	Pins 2 & 3 closed
512KB (A/B)	Pins 1 & 2 closed	Pins 1 & 2 closed

CPU SPEED SELECTION							
CPU Speed	Clock Speed	Multiplier	JP14	JP15	JP26	JP27	JP28
75MHz	50MHz	1.5x	Open	Open	1 & 2	2 & 3	2 & 3
90MHz	60MHz	1.5x	Open	Open	2 & 3	2 & 3	1 & 2
100MHz	66MHz	1.5x	Open	Open	2 & 3	1 & 2	2 & 3
120MHz	60MHz	2x	Open	Closed	2 & 3	2 & 3	1 & 2
133MHz	66MHz	2x	Open	Closed	2 & 3	1 & 2	2 & 3
150MHz	60MHz	2.5x	Closed	Closed	2 & 3	2 & 3	1 & 2
166MHz	66MHz	2.5x	Closed	Closed	2 & 3	1 & 2	2 & 3

CPU VOLTAGE SELECTION			
Voltage	JP22	JP23	JP24
3.4v (STD)	Closed	Open	Open
3.5v (VRE)	Open	Closed	Open