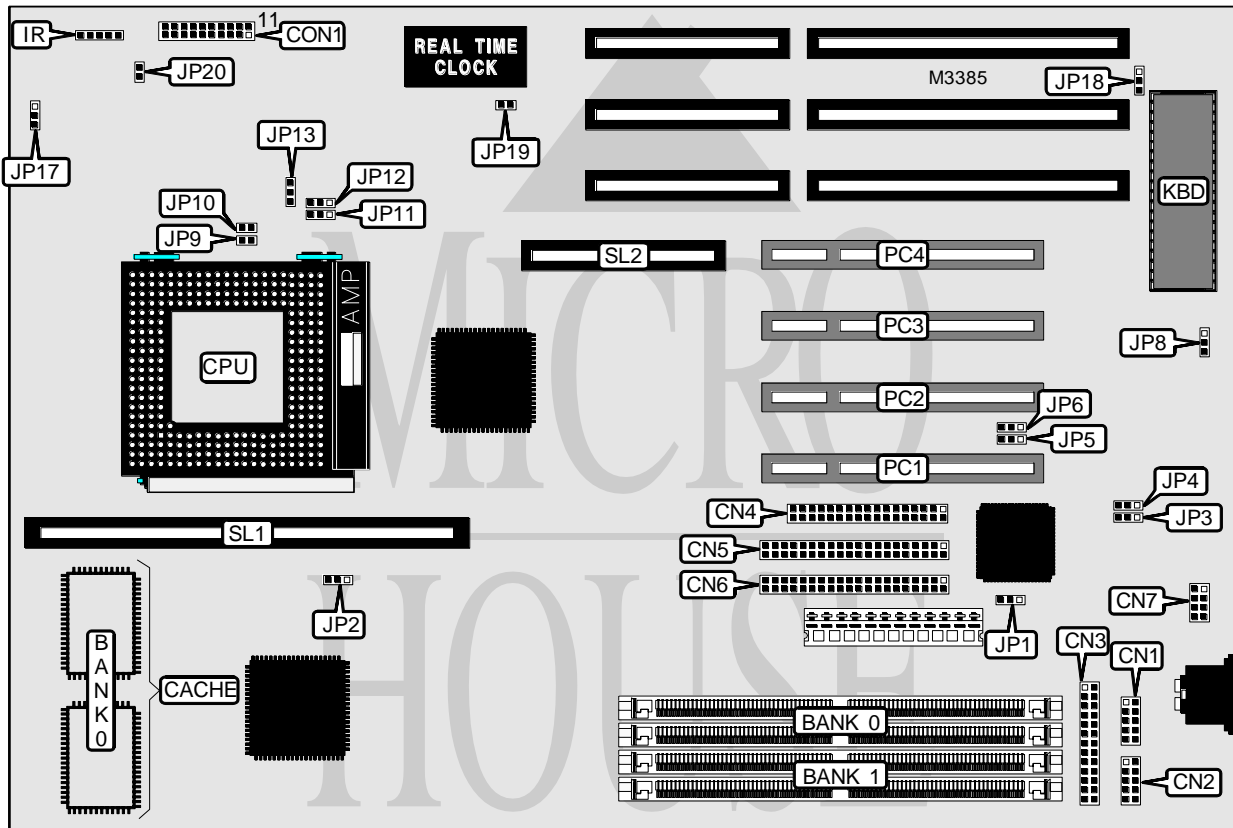


# ASUS COMPUTER INTERNATIONAL P/I - P 5 5 T 2 P 4

<b>Processor</b>	Pentium
<b>Processor Speed</b>	75/90/100/120/133/150/166MHz
<b>Chip Set</b>	Intel
<b>Video Chip Set</b>	None
<b>Maximum Onboard Memory</b>	256MB (EDO supported)
<b>Maximum Video Memory</b>	None
<b>Cache</b>	256/512KB
<b>BIOS</b>	Award
<b>Dimensions</b>	330mm x 218mm
<b>I/O Options</b>	32-bit PCI slots (4), floppy drive interface, green PC connector, IDE interfaces (2), parallel port, PS/2 mouse interface, serial ports (2), cache slot, IR connector, MediaBus slot
<b>NPU Options</b>	None



Continued on next page. . .

# ASUS COMPUTER INTERNATIONAL

## P/I - P 5 5 T 2 P 4

... continued from previous page

CONNECTIONS			
Purpose	Location	Purpose	Location
Serial port 1	CN1	Turbo LED	CON1 pins 12 & 13
Serial port 2	CN2	Green PC connector	CON1 pins 14 & 15
Parallel port	CN3	Reset switch	CON1 pins 19 & 20
Floppy drive interface	CN4	IR connector	IR
IDE interface 1	CN5	Chassis fan power	JP13
IDE interface 2	CN6	IDE interface LED	JP20
PS/2 mouse interface	CN7	32-bit PCI slots	PC1 - PC4
Power LED & keylock	CON1 pins 1 - 5	Cache slot	SL1
Speaker	CON1 pins 7 - 10	MediaBus slot	SL2

USER CONFIGURABLE SETTINGS		
Function	Label	Position
í On board multi I/O enabled	JP1	Pins 1 & 2 closed
On board multi I/O disabled	JP1	Pins 2 & 3 closed
í Flash BIOS write protect disabled	JP8	Pins 1 & 2 closed
Flash BIOS write protect enabled	JP8	Pins 2 & 3 closed
í PS/2 mouse IRQ12 disabled	JP18	Pins 2 & 3 closed
PS/2 mouse IRQ12 enabled	JP18	Pins 1 & 2 closed
í CMOS memory normal operation	JP19	Open
CMOS memory clear	JP19	Closed

DRAM CONFIGURATION		
Size	Bank 0	Bank 1
8MB	(2) 1M x 36	None
16MB	(2) 2M x 36	None
16MB	(2) 1M x 36	(2) 1M x 36
24MB	(2) 1M x 36	(2) 2M x 36
24MB	(2) 2M x 36	(2) 1M x 36
32MB	(2) 4M x 36	None
32MB	(2) 2M x 36	(2) 2M x 36
40MB	(2) 1M x 36	(2) 4M x 36
40MB	(2) 4M x 36	(2) 1M x 36
48MB	(2) 2M x 36	(2) 4M x 36
48MB	(2) 4M x 36	(2) 2M x 36
64MB	(2) 8M x 36	None
64MB	(2) 4M x 36	(2) 4M x 36
72MB	(2) 1M x 36	(2) 8M x 36
72MB	(2) 8M x 36	(2) 1M x 36
80MB	(2) 2M x 36	(2) 8M x 36
80MB	(2) 8M x 36	(2) 2M x 36
96MB	(2) 4M x 36	(2) 8M x 36
96MB	(2) 8M x 36	(2) 4M x 36

Continued on next page...

# ASUS COMPUTER INTERNATIONAL

## P/I - P 5 5 T 2 P 4

... continued from previous page

DRAM CONFIGURATION (CON'T)		
Size	Bank 0	Bank 1
128MB	(2) 16M x 36	None
128MB	(2) 8M x 36	(2) 8M x 36
136MB	(2) 1M x 36	(2) 16M x 36
136MB	(2) 16M x 36	(2) 1M x 36
144MB	(2) 2M x 36	(2) 16M x 36
144MB	(2) 16M x 36	(2) 2M x 36
160MB	(2) 4M x 36	(2) 16M x 36
160MB	(2) 16M x 36	(2) 4M x 36
192MB	(2) 8M x 36	(2) 16M x 36
192MB	(2) 16M x 36	(2) 8M x 36
256MB	(2) 16M x 36	(2) 16M x 36

Note: Board accepts EDO memory. Board also accepts x 32 SIMMs. Memory setup is required in BIOS.

CACHE CONFIGURATION		
Size	Bank 0	SL1
256KB (A)	(2) 32K x 32	None
256KB (B)	None	256KB module installed
512KB (A)	(2) 32K x 32	256KB module installed
512KB (B)	(2) 64K x 32	None
512KB (C)	None	512KB module installed

CACHE JUMPER CONFIGURATION	
Size	JP2
256KB (A/B)	Pins 1 & 2 closed
512KB (A/B/C)	Pins 2 & 3 closed

CPU SPEED SELECTION						
CPU Speed	Clock Speed	Multiplier	JP9	JP10	JP11	JP12
75MHz	50MHz	1.5x	Open	Open	2 & 3	2 & 3
90MHz	60MHz	1.5x	Open	Open	2 & 3	1 & 2
100MHz	66MHz	1.5x	Open	Open	1 & 2	2 & 3
120MHz	60MHz	2x	Closed	Open	2 & 3	1 & 2
133MHz	66MHz	2x	Closed	Open	1 & 2	2 & 3
150MHz	60MHz	2.5x	Closed	Closed	2 & 3	1 & 2
166MHz	66MHz	2.5x	Closed	Closed	1 & 2	2 & 3

Note: Designated pins should be in the closed position.

Continued on next page...

# ASUS COMPUTER INTERNATIONAL

## P/I - P 5 5 T 2 P 4

... continued from previous page

CPU VOLTAGE SELECTION	
Voltage	JP17
3.3v - 3.465v (STD)	Pins 1 & 2 closed
3.4v - 3.6v (VRE)	Pins 2 & 3 closed

DMA CHANNEL SELECTION		
Channel	JP5	JP6
1	Pins 1 & 2 closed	Pins 1 & 2 closed
í 3	Pins 2 & 3 closed	Pins 2 & 3 closed

SERIAL PORT 2 SELECTION		
Setting	JP3	JP4
í Used as COM2	Pins 1 & 2 closed	Pins 1 & 2 closed
Used as IR connector	Pins 2 & 3 closed	Pins 2 & 3 closed

Note: These jumpers may not be available on all boards.