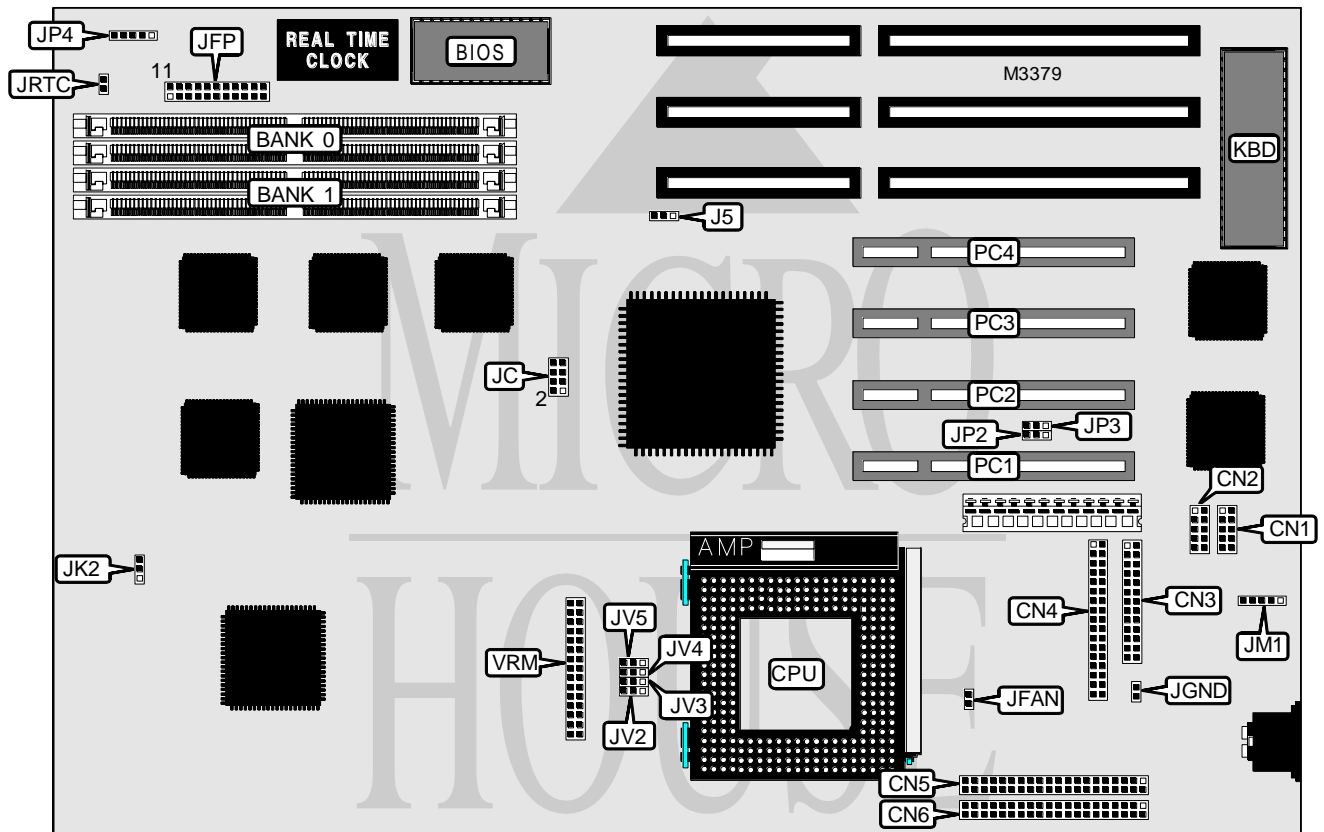


# MICRO-STAR INTERNATIONAL CO., LTD.

## MS - 6 1 0 1

<b>Processor</b>	Pentium Pro
<b>Processor Speed</b>	150/166/180/200MHz
<b>Chip Set</b>	Intel
<b>Video Chip Set</b>	None
<b>Maximum Onboard Memory</b>	512MB DRAM
<b>Maximum Video Memory</b>	None
<b>Cache</b>	256/512KB
<b>BIOS</b>	Award
<b>Dimensions</b>	330mm x 220mm
<b>I/O Options</b>	32-bit PCI slots (4), floppy drive interface, IDE interfaces (2), parallel port, PS/2 mouse interface, serial ports (2), IR connector, VRM connector
<b>NPU Options</b>	None



Continued on next page . . .

**MICRO-STAR INTERNATIONAL CO., LTD.**  
**MS - 6 1 0 1**

... continued from previous page

CONNECTIONS			
Purpose	Location	Purpose	Location
Serial port 1	CN1	Turbo LED	JFP pins 12 & 13
Serial port 2	CN2	Reset switch	JFP pins 19 & 20
Parallel port	CN3	IDE interface LED	JFP pins 21 & 22
Floppy drive interface	CN4	Chassis fan power	JFAN
IDE interface 2	CN5	PS/2 mouse interface	JM1
IDE interface 1	CN6	IR connector	JP4
Power LED & keylock	JFP pins 1 - 5	32-bit PCI slots	PC1 - PC4
Speaker	JFP pins 7 - 10	VRM connector	VRM

USER CONFIGURABLE SETTINGS		
Function	Label	Position
í Flash BIOS write protect enabled (except for software flash utility)	J5	Pins 2 & 3 closed
Flash BIOS write protect disabled	J5	Pins 1 & 2 closed
Keyboard grounded to PCB ground	JGND	Closed
Keyboard grounded to case	JGND	Open
í CMOS memory normal operation	JRTC	Open
CMOS memory clear	JRTC	Closed

DRAM CONFIGURATION		
Size	Bank 0	Bank 1
8MB	(2) 1M x 36	None
16MB	(2) 2M x 36	None
16MB	(2) 1M x 36	(2) 1M x 36
32MB	(2) 4M x 36	None
32MB	(2) 2M x 36	(2) 2M x 36
64MB	(2) 8M x 36	None
64MB	(2) 4M x 36	(2) 4M x 36
128MB	(2) 8M x 36	(2) 8M x 36
128MB	(2) 16M x 36	None
256MB	(2) 16M x 36	(2) 16M x 36
256MB	(2) 32M x 36	None
512MB	(2) 32M x 36	(2) 32M x 36

Note: When using ECC function, you need to have x36 SIMMs and setup BIOS accordingly.

CACHE CONFIGURATION
Note: 256KB/512KB cache is located on the Pentium Pro CPU.

Continued on next page...

# MICRO-STAR INTERNATIONAL CO., LTD.

## MS - 6101

... continued from previous page

CPU CORE FREQUENCY RATIO SELECTION			
CPU Speed	Bus Clock	BUS: Core Ratio	JC
120MHz	60/66MHz	1/2	1 & 2, 3 & 4, 5 & 6, 7 & 8
133MHz	60/66MHz	1/2	1 & 2, 3 & 4, 5 & 6, 7 & 8
150MHz	60/66MHz	2/5	3 & 4, 5 & 6, 7 & 8
166MHz	60/66MHz	2/5	3 & 4, 5 & 6, 7 & 8
180MHz	60/66MHz	1/3	1 & 2, 3 & 4, 7 & 8
200MHz	60/66MHz	1/3	1 & 2, 3 & 4, 7 & 8
N/A	60/66MHz	1/4	1 & 2, 3 & 4, 5 & 6
N/A	60/66MHz	1/5	1 & 2, 3 & 4
N/A	60/66MHz	2/7	3 & 4, 7 & 8
N/A	60/66MHz	2/9	3 & 4, 5 & 6
N/A	60/66MHz	2/11	3 & 4

Note: Pins designated should be in the closed position.

CPU BUS CLOCK SELECTION	
Type	JK2
60MHz	Pins 1 & 2 closed
66MHz	Pins 2 & 3 closed

CPU VOLTAGE SELECTION				
Voltage	JV2	JV3	JV4	JV5
VID (auto protect)	Pins 1 & 2 closed	Pins 1 & 2 closed	Pins 1 & 2 closed	Pins 1 & 2 closed
2.1v	Pins 1 & 2 closed	Pins 1 & 2 closed	Pins 1 & 2 closed	Pins 2 & 3 closed
2.2v	Pins 1 & 2 closed	Pins 1 & 2 closed	Pins 2 & 3 closed	Pins 1 & 2 closed
2.3v	Pins 1 & 2 closed	Pins 1 & 2 closed	Pins 2 & 3 closed	Pins 2 & 3 closed
2.4v	Pins 1 & 2 closed	Pins 2 & 3 closed	Pins 1 & 2 closed	Pins 1 & 2 closed
2.5v	Pins 1 & 2 closed	Pins 2 & 3 closed	Pins 1 & 2 closed	Pins 2 & 3 closed
2.6v	Pins 1 & 2 closed	Pins 2 & 3 closed	Pins 2 & 3 closed	Pins 1 & 2 closed
2.7v	Pins 1 & 2 closed	Pins 2 & 3 closed	Pins 2 & 3 closed	Pins 2 & 3 closed
2.8v	Pins 2 & 3 closed	Pins 1 & 2 closed	Pins 1 & 2 closed	Pins 1 & 2 closed
2.9v	Pins 2 & 3 closed	Pins 1 & 2 closed	Pins 1 & 2 closed	Pins 2 & 3 closed
3.0v	Pins 2 & 3 closed	Pins 1 & 2 closed	Pins 2 & 3 closed	Pins 1 & 2 closed
3.1v	Pins 2 & 3 closed	Pins 1 & 2 closed	Pins 2 & 3 closed	Pins 2 & 3 closed
3.2v	Pins 2 & 3 closed	Pins 2 & 3 closed	Pins 1 & 2 closed	Pins 1 & 2 closed
3.3v	Pins 2 & 3 closed	Pins 2 & 3 closed	Pins 1 & 2 closed	Pins 2 & 3 closed
3.4v	Pins 2 & 3 closed	Pins 2 & 3 closed	Pins 2 & 3 closed	Pins 1 & 2 closed
3.5v	Pins 2 & 3 closed	Pins 2 & 3 closed	Pins 2 & 3 closed	Pins 2 & 3 closed

PCI/IDE SELECTION			
PCI Slot 4	On Board PCI IDE	JP2	JP3
Master	Slave	Pins 2 & 3 closed	Pins 2 & 3 closed
Slave	Master	Pins 1 & 2 closed	Pins 1 & 2 closed