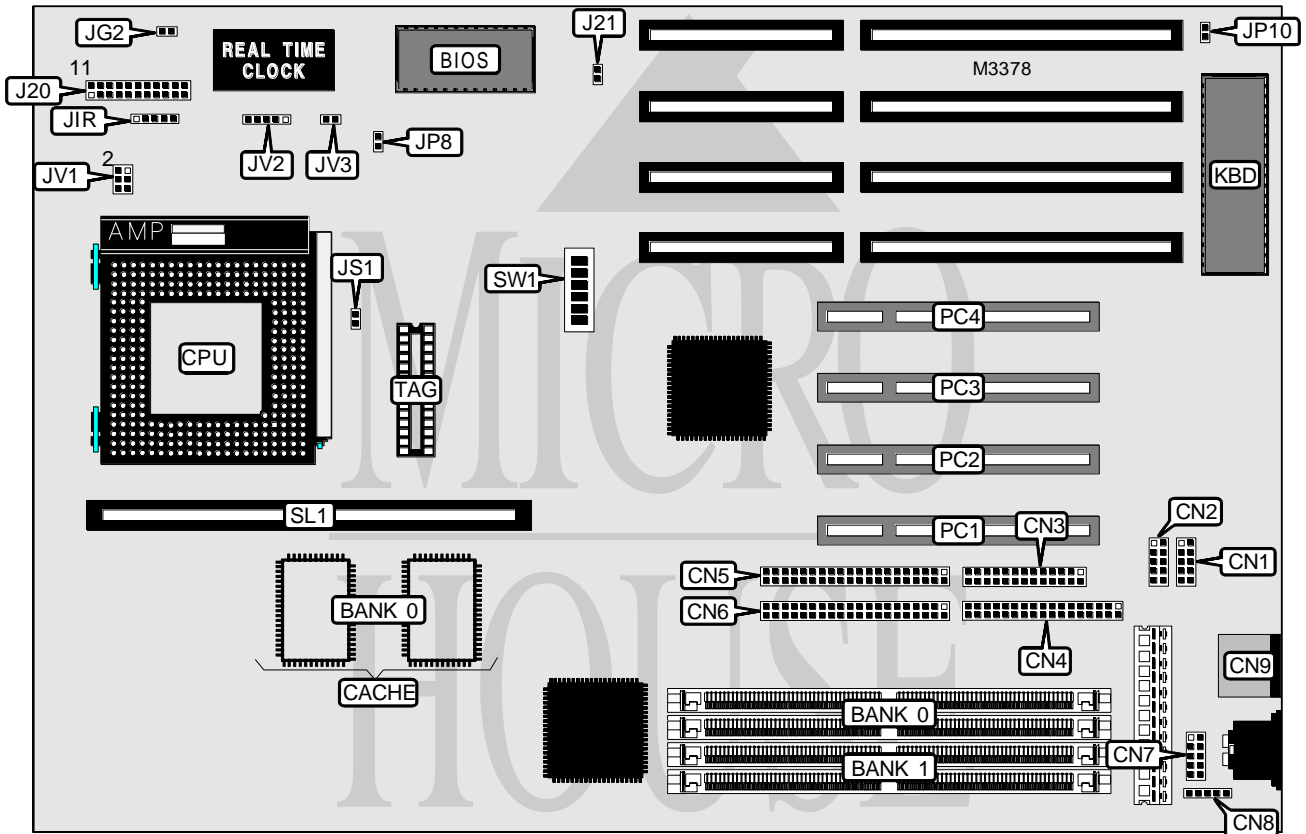


MICRO-STAR INTERNATIONAL CO., LTD.

MS - 5 1 2 8

Processor	CX M1/AM K5/Pentium
Processor Speed	75/90/100/120/133/150/166/180/200MHz
Chip Set	Intel
Video Chip Set	None
Maximum Onboard Memory	256MB (EDO supported)
Maximum Video Memory	None
Cache	256/512KB
BIOS	AMI/Award
Dimensions	280mm x 220mm
I/O Options	32-bit PCI slots (4), floppy drive interface, green PC connector, IDE interfaces (2), parallel port, PS/2 mouse interface, serial ports (2), cache slot, IR connector, USB connector
NPU Options	None



Continued on next page . . .

MICRO-STAR INTERNATIONAL CO., LTD.
MS - 5 1 2 8

... continued from previous page

CONNECTIONS			
Purpose	Location	Purpose	Location
Serial port 1	CN1	Speaker	J20 pins 7 - 10
Serial port 2	CN2	Turbo LED	J20 pins 12 & 13
Parallel port	CN3	Turbo switch	J20 pins 15 - 17
Floppy drive interface	CN4	Reset switch	J20 pins 19 & 20
IDE interface 2	CN5	IDE interface LED	J20 pins 21 & 22
IDE interface 1	CN6	Chassis fan power	J21
USB connector	CN7	IR connector	J1R
PS/2 mouse interface	CN8	Green PC connector	JG2
PS/2 mouse port	CN9	32-bit PCI slots	PC1 - PC4
Power LED & keylock	J20 pins 1 - 5	Cache slot	SL1

USER CONFIGURABLE SETTINGS		
Function	Label	Position
Jumper information unavailable	JP8	Unidentified
PS/2 IRQ12 mouse enabled	JP10	Closed
PS/2 IRQ12 mouse disabled	JP10	Open

DRAM CONFIGURATION		
Size	Bank 0	Bank 1
8MB	(2) 1M x 36	None
8MB	None	(2) 1M x 36
16MB	(2) 2M x 36	None
16MB	(2) 1M x 36	(2) 1M x 36
16MB	None	(2) 2M x 36
24MB	(2) 2M x 36	(2) 1M x 36
24MB	(2) 1M x 36	(2) 2M x 36
32MB	(2) 4M x 36	None
32MB	(2) 2M x 36	(2) 2M x 36
32MB	None	(2) 4M x 36
40MB	(2) 4M x 36	(2) 1M x 36
40MB	(2) 1M x 36	(2) 4M x 36
48MB	(2) 4M x 36	(2) 2M x 36
48MB	(2) 2M x 36	(2) 4M x 36
64MB	None	(2) 8M x 36
64MB	(2) 8M x 36	None
64MB	(2) 4M x 36	(2) 4M x 36
72MB	(2) 8M x 36	(2) 1M x 36
72MB	(2) 1M x 36	(2) 8M x 36
80MB	(2) 8M x 36	(2) 2M x 36
80MB	(2) 2M x 36	(2) 8M x 36
96MB	(2) 8M x 36	(2) 4M x 36
96MB	(2) 4M x 36	(2) 8M x 36

Continued on next page...

MICRO-STAR INTERNATIONAL CO., LTD.
MS - 5 1 2 8

... continued from previous page

DRAM CONFIGURATION (CON'T)		
Size	Bank 0	Bank 1
128MB	None	(2) 16M x 36
128MB	(2) 8M x 36	(2) 8M x 36
136MB	(2) 1M x 36	(2) 16M x 36
136MB	(2) 16M x 36	(2) 1M x 36
144MB	(2) 2M x 36	(2) 16M x 36
144MB	(2) 16M x 36	(2) 2M x 36
160MB	(2) 4M x 36	(2) 16M x 36
160MB	(2) 16M x 36	(2) 4M x 36
192MB	(2) 8M x 36	(2) 16M x 36
192MB	(2) 16M x 36	(2) 8M x 36
256MB	(2) 16M x 36	(2) 16M x 36

CACHE CONFIGURATION		
Size	Bank 0	SL1
256KB	(2) 32K x 32	None
512KB	(2) 32K x 32	256KB module installed

Note: The size of the TAG chip is unidentified.

CACHE JUMPER CONFIGURATION	
Setting	JS1
SL1 installed	Closed
SL1 not installed	Open

CPU SPEED SELECTION (CYRIX)						
Speed	SW1/1	SW1/2	SW1/3	SW1/4	SW1/5	SW1/6
120MHz	Off	On	Off	Off	On	Off
133MHz	Off	On	Off	On	On	On
150MHz	Off	On	Off	Off	Off	On
166MHz	Off	On	Off	Off	Off	Off

CPU SPEED SELECTION (AMD/PENTIUM)						
Speed	SW1/1	SW1/2	SW1/3	SW1/4	SW1/5	SW1/6
75MHz	Off	Off	Off	Off	On	Off
90MHz	Off	Off	Off	Off	Off	On
100MHz	Off	Off	Off	Off	Off	Off
120MHz	Off	On	Off	Off	Off	On
133MHz	Off	On	Off	Off	Off	Off
150MHz	Off	On	On	Off	Off	On
166MHz	Off	On	On	Off	Off	Off
180MHz	Off	Off	On	Off	Off	On
200MHz	Off	Off	On	Off	Off	Off

Continued on next page...

MICRO-STAR INTERNATIONAL CO., LTD.
MS - 5 1 2 8*... continued from previous page*

CPU VOLTAGE SELECTION			
Voltage	JV1	JV2	JV3
2.8v - 2.9v (P55)	Open	1 & 2, 4 & 5	Open
3.3v - 3.45v (STD/VR)	1 & 2, 3 & 4, 5 & 6	3 & 4	Open
3.45v - 3.6v (VRE)	1 & 2, 3 & 4, 5 & 6	3 & 4	Closed

Note: Pins designated should be in the closed position.