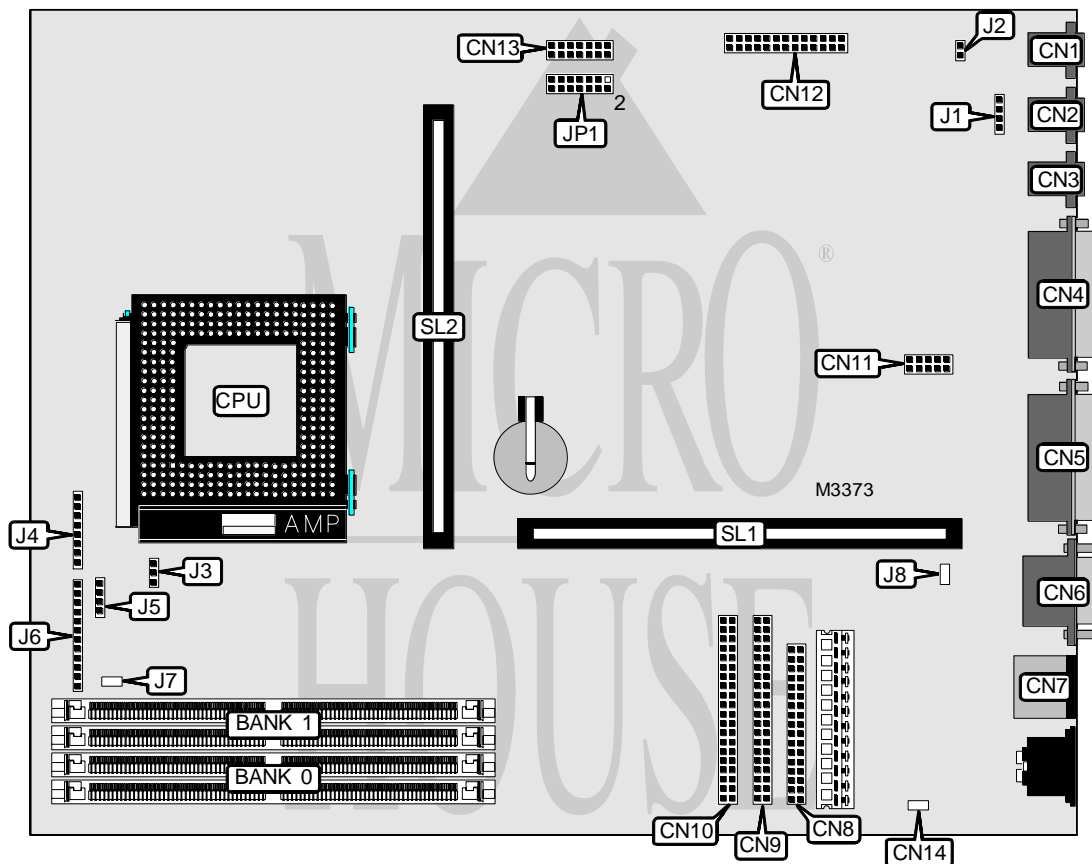


SIEMENS NIXDORF INFORMATIONSSYSTEME AG

S 2 6 3 6 1 - D 8 5 8

Processor	Pentium
Processor Speed	75/90/100/120/133/150/166MHz
Chip Set	Unidentified
Video Chip Set	None
Maximum Onboard Memory	128MB (EDO supported)
Maximum Video Memory	None
Cache	256/512KB
BIOS	Unidentified
Dimensions	254mm x 218mm
I/O Options	Microphone connector, audio input connector, game/MIDI port, parallel port, serial ports (2), PS/2 mouse port, floppy drive interface, IDE interfaces (2), wave table connector, PC extension, soft off power supply connector, CD audio input connector, CD-ROM connector, front panel connector, soft on/off switch connector, remote on connector, riser slot, cache slot
NPU Options	None



Continued on next page. . .

SIEMENS NIXDORF INFORMATIONSSYSTEME AG

S 2 6 3 6 1 - D 8 5 8

... continued from previous page

CONNECTIONS			
Purpose	Location	Purpose	Location
Microphone connector (optional)	CN1	PC extension (optional)	CN13
Audio input connector (optional)	CN2	Soft off power supply connector	CN14
Speaker (optional)	CN3	CD audio input connector (optional)	J1
Game/MIDI port	CN4	CD-ROM connector (optional)	J2
Parallel port	CN5	Chassis fan power	J3
Serial port 1	CN6	Front panel connector	J4
PS/2 mouse port	CN7	Speaker	J5
Floppy drive interface	CN8	Front panel connector	J6
IDE interface	CN9	Soft on/off switch connector	J7
IDE interface	CN10	Remote on connector	J8
Serial port 2	CN11	Riser slot	SL1
Wave table connector	CN12	Cache slot	SL2

USER CONFIGURABLE SETTINGS		
Function	Label	Position
í Flash BIOS write protect disabled	JP1 pins 7 & 8	Open
Flash BIOS write protect enabled	JP1 pins 7 & 8	Closed
í Password enabled	JP1 pins 9 & 10	Open
Password disabled	JP1 pins 9 & 10	Closed
í BIOS normal operation	JP1 pins 11 & 12	Open
BIOS recovery mode	JP1 pins 11 & 12	Closed

DRAM CONFIGURATION		
Size	Bank 0	Bank 1
8MB	(2) 1M x 36	None
16MB	(2) 2M x 36	None
16MB	(2) 1M x 36	(2) 1M x 36
24MB	(2) 2M x 36	(2) 1M x 36
24MB	(2) 1M x 36	(2) 2M x 36
32MB	(2) 4M x 36	None
32MB	(2) 2M x 36	(2) 2M x 36
40MB	(2) 4M x 36	(2) 1M x 36
40MB	(2) 1M x 36	(2) 4M x 36
48MB	(2) 4M x 36	(2) 2M x 36
48MB	(2) 2M x 36	(2) 4M x 36
64MB	(2) 8M x 36	None
64MB	(2) 4M x 36	(2) 4M x 36
72MB	(2) 8M x 36	(2) 1M x 36

Continued on next page...

SIEMENS NIXDORF INFORMATIONSSYSTEME AG

S 2 6 3 6 1 - D 8 5 8

... continued from previous page

DRAM CONFIGURATION (CON'T)		
Size	Bank 0	Bank 1
72MB	(2) 1M x 36	(2) 8M x 36
80MB	(2) 8M x 36	(2) 2M x 36
80MB	(2) 2M x 36	(2) 8M x 36
96MB	(2) 8M x 36	(2) 4M x 36
96MB	(2) 4M x 36	(2) 8M x 36
128MB	(2) 8M x 36	(2) 8M x 36

Note: Board accepts EDO memory. Board also accepts x 32 SIMMs.

CACHE CONFIGURATION	
Size	SL2
256KB	256KB module installed
512KB	512KB module installed

CPU SPEED SELECTION				
Speed	JP1 pins 1 & 2	JP1 pins 3 & 4	JP1 pins 5 & 6	JP1 pins 13 & 14
75MHz	Closed	Closed	Open	Open
90MHz	Closed	Open	Open	Open
100MHz	Open	Closed	Open	Open
120MHz	Closed	Open	Closed	Open
133MHz	Open	Closed	Closed	Open
150MHz	Closed	Open	Closed	Closed
166MHz	Open	Closed	Closed	Closed