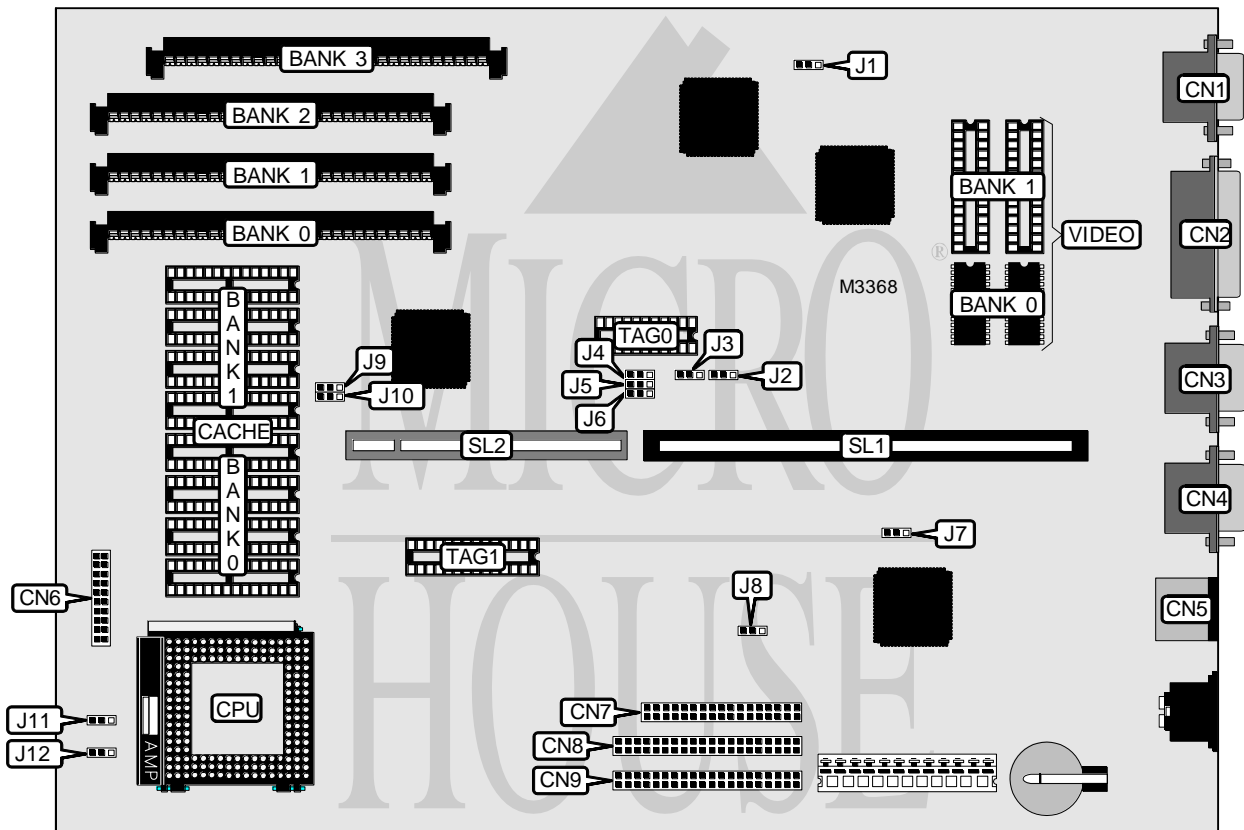



IBM CORPORATION VALUEPOINT 6472, 6482, 6484

Processor	80486SX/SL80486SX/80487SX/80486DX/SL80486DX/80486DX2/ SL80486DX2/80486DX4
Processor Speed	25/33/40/50/50(internal)/66(internal)/100(internal)MHz
Chip Set	Unidentified
Video Chip Set	Unidentified
Maximum Onboard Memory	128MB
Maximum Video Memory	2MB
Cache	128/256KB
BIOS	Unidentified
Dimensions	330mm x 218mm
I/O Options	Floppy drive interface, IDE interfaces (2), 32-bit VESA/PCI bus slot, parallel port, PS/2 mouse port, serial ports (2), VGA port, riser slot
NPU Options	None




 LOCATION UNIDENTIFIED

Continued on next page...

IBM CORPORATION

VALUEPOINT 6472, 6482, 6484

... continued from previous page

CONNECTIONS			
Purpose	Location	Purpose	Location
VGA port	CN1	Floppy drive interface	CN7
Parallel port	CN2	IDE interface	CN8
Serial port	CN3	IDE interface	CN9
Serial port	CN4	Riser slot	SL1
PS/2 mouse port	CN5	32-bit VESA/PCI bus slot	SL2
Front panel connector	CN6		

USER CONFIGURABLE SETTINGS		
Function	Label	Position
On board video enabled	J1	Pins 1 & 2 closed
On board video disabled	J1	Pins 2 & 3 closed
Mouse IRQ12 enabled	J7	Pins 1 & 2 closed
Mouse IRQ12 disabled	J7	Pins 2 & 3 closed
Floppy drive write protect enabled	J8	Pins 2 & 3 closed
Floppy drive write protect disabled	J8	Pins 1 & 2 closed

DRAM CONFIGURATION				
Size	Bank 0	Bank 1	Bank 2	Bank 3
4MB	(1) 1M x 36	None	None	None
8MB	(1) 1M x 36	(1) 1M x 36	None	None
8MB	(1) 2M x 36	None	None	None
12MB	(1) 1M x 36	(1) 1M x 36	(1) 1M x 36	None
12MB	(1) 1M x 36	(1) 2M x 36	None	None
16MB	(1) 4M x 36	None	None	None
16MB	(1) 1M x 36	(1) 1M x 36	(1) 2M x 36	None
16MB	(1) 1M x 36	(1) 1M x 36	(1) 1M x 36	(1) 1M x 36
16MB	(1) 2M x 36	(1) 2M x 36	None	None
20MB	(1) 1M x 36	(1) 2M x 36	(1) 2M x 36	None
20MB	(1) 1M x 36	(1) 4M x 36	None	None
24MB	(1) 2M x 36	(1) 2M x 36	(1) 2M x 36	None
24MB	(1) 1M x 36	(1) 1M x 36	(1) 2M x 36	(1) 2M x 36
24MB	(1) 1M x 36	(1) 1M x 36	(1) 4M x 36	None
28MB	(1) 1M x 36	(1) 2M x 36	(1) 2M x 36	(1) 2M x 36
28MB	(1) 1M x 36	(1) 1M x 36	(1) 4M x 36	(1) 1M x 36
32MB	(1) 4M x 36	(1) 4M x 36	None	None
32MB	(1) 8M x 36	None	None	None
32MB	(1) 2M x 36	(1) 2M x 36	(1) 4M x 36	None
32MB	(1) 2M x 36	(1) 2M x 36	(1) 2M x 36	(1) 2M x 36
36MB	(1) 1M x 36	(1) 4M x 36	(1) 4M x 36	None
40MB	(1) 1M x 36	(1) 1M x 36	(1) 8M x 36	None
40MB	(1) 1M x 36	(1) 1M x 36	(1) 4M x 36	(1) 4M x 36
48MB	(1) 4M x 36	(1) 4M x 36	(1) 4M x 36	None
48MB	(1) 2M x 36	(1) 2M x 36	(1) 8M x 36	None

Continued on next page...

IBM CORPORATION

VALUEPOINT 6472, 6482, 6484

... continued from previous page

DRAM CONFIGURATION (CON'T)				
Size	Bank 0	Bank 1	Bank 2	Bank 3
48MB	(1) 2M x 36	(1) 2M x 36	(1) 4M x 36	(1) 4M x 36
52MB	(1) 1M x 36	(1) 4M x 36	(1) 4M x 36	(1) 4M x 36
64MB	(1) 8M x 36	(1) 8M x 36	None	None
64MB	(1) 4M x 36	(1) 4M x 36	(1) 8M x 36	None
64MB	(1) 4M x 36	(1) 4M x 36	(1) 4M x 36	(1) 4M x 36
68MB	(1) 1M x 36	(1) 8M x 36	(1) 4M x 36	(1) 4M x 36
72MB	(1) 1M x 36	(1) 1M x 36	(1) 8M x 36	(1) 8M x 36
80MB	(1) 2M x 36	(1) 2M x 36	(1) 8M x 36	(1) 8M x 36
84MB	(1) 1M x 36	(1) 8M x 36	(1) 8M x 36	(1) 4M x 36
96MB	(1) 8M x 36	(1) 8M x 36	(1) 8M x 36	None
96MB	(1) 4M x 36	(1) 4M x 36	(1) 8M x 36	(1) 8M x 36
100MB	(1) 1M x 36	(1) 8M x 36	(1) 8M x 36	(1) 8M x 36
128MB	(1) 8M x 36	(1) 8M x 36	(1) 8M x 36	(1) 8M x 36

CACHE CONFIGURATION			
Size	Bank 0	Bank 1	TAG 0 & 1
128KB	(4) 32K x 8	None	Chips installed
256KB	(4) 32K x 8	(4) 32K x 8	Chips installed

Note: The TAG chip sizes are unidentified.

CACHE JUMPER CONFIGURATION		
Size	J9	J10
128KB	Pins 1 & 2 closed	Pins 1 & 2 closed
256KB	Pins 2 & 3 closed	Pins 2 & 3 closed

VIDEO MEMORY CONFIGURATION		
Size	Bank 0	Bank 1
1MB	(2) 512KB	None
2MB	(2) 512KB	(2) 256K x 16

Note: Bank 0 is factory installed and is not configurable.

CPU SPEED SELECTION		
Speed	J2	J3
25MHz	Pins 2 & 3 closed	Pins 1 & 2 closed
33MHz	Pins 2 & 3 closed	Pins 2 & 3 closed
40MHz	Pins 1 & 2 closed	Pins 1 & 2 closed
50MHz	Pins 1 & 2 closed	Pins 2 & 3 closed
50iMHz	Pins 2 & 3 closed	Pins 1 & 2 closed
66iMHz	Pins 2 & 3 closed	Pins 2 & 3 closed
100iMHz	Pins 1 & 2 closed	Pins 2 & 3 closed

Continued on next page...

IBM CORPORATION

VALUEPOINT 6472, 6482, 6484

... continued from previous page

CPU TYPE SELECTION	
Type	J11
80486SX	Pins 2 & 3 closed
80487SX	Pins 1 & 2 closed
80486SX2	Pins 1 & 2 closed
80486DX	Pins 1 & 2 closed
80486DX2	Pins 1 & 2 closed
80486DX4	Pins 1 & 2 closed

CPU TYPE SELECTION	
Type	J12
SL-enhanced	Pins 1 & 2 closed
Non SL-enhanced	Pins 2 & 3 closed

CPU VOLTAGE SELECTION	
Setting	J13
All CPU types	Closed
80486DX4 only	VRM installed

VESA/PCI SELECTION			
Setting	J4	J5	J6
VESA card used	Pins 2 & 3 closed	Pins 2 & 3 closed	Pins 2 & 3 closed
PCI card used	Pins 1 & 2 closed	Pins 1 & 2 closed	Pins 1 & 2 closed