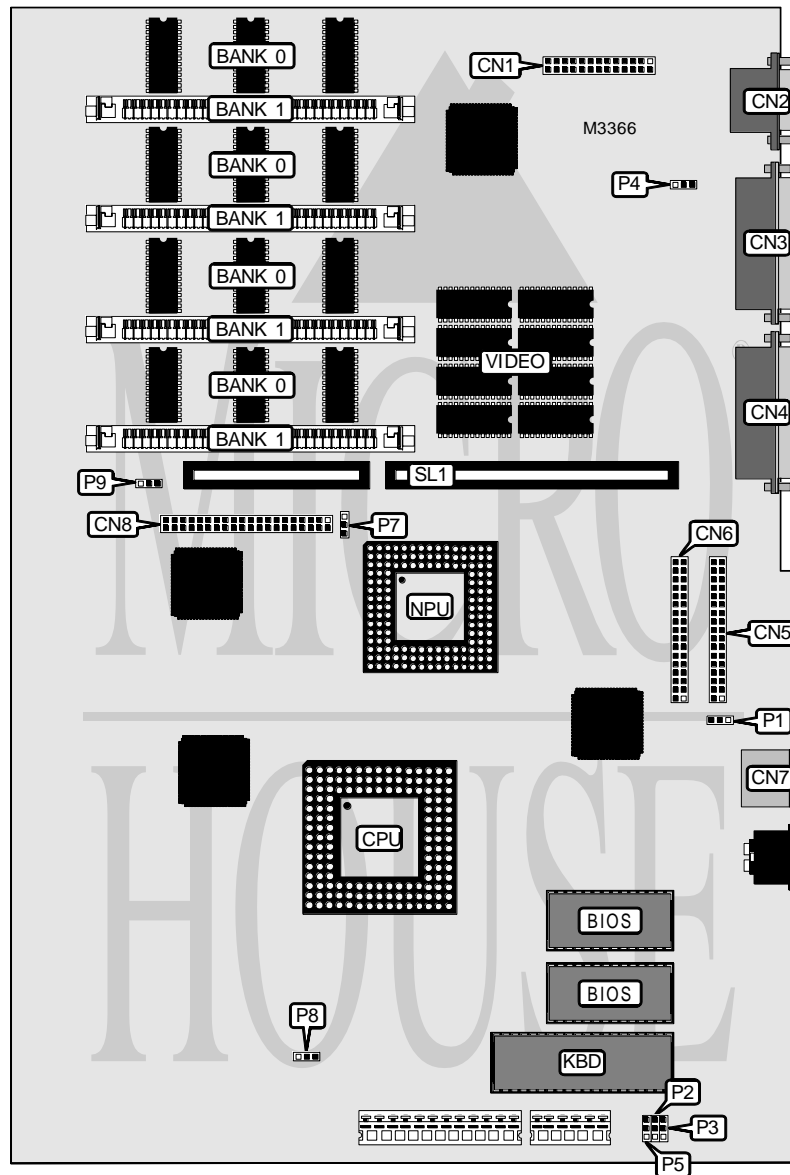


OLIVETTI M480-20 (BA371)

Processor	80486SX
Processor Speed	33MHz
Chip Set	Topcat
Video Chip Set	Unidentified
Maximum Onboard Memory	36MB (16MB on external memory card)
Maximum Video Memory	1MB
Cache	None
BIOS	Unidentified
Dimensions	330mm x 218mm
I/O Options	Floppy drive interfaces (2), SCSI/IDE interface, parallel port, PS/2 mouse port, serial port, riser slot, feature connector
NPU Options	4167



Continued on next page...

OLIVETTI

M480-20 (BA371)

... continued from previous page

CONNECTIONS			
Purpose	Location	Purpose	Location
Feature connector	CN1	Floppy drive interface 3	CN6
VGA port	CN2	PS/2 mouse port	CN7
Parallel port	CN3	SCSI/IDE interface	CN8
Serial port	CN4	Riser slot	SL1
Floppy drive interface 1/2	CN5		

USER CONFIGURABLE SETTINGS		
Function	Label	Position
í Third floppy drive interface enabled	P1	Pins 1 & 2 closed
Third floppy drive interface disabled	P1	Pins 2 & 3 closed
í Password enabled	P2	Pins 2 & 3 closed
Password disabled	P2	Pins 1 & 2 closed
í Parallel port unidirectional	P3	Pins 1 & 2 closed
Parallel port bidirectional	P3	Pins 2 & 3 closed
í Interlaced video enabled	P4	Pins 2 & 3 closed
Interlaced video disabled	P4	Pins 1 & 2 closed
í Mainboard current control maximum current	P5	Pins 1 & 2 closed
Mainboard current control minimum current	P5	Pins 2 & 3 closed
í Hard drive wait state select 1 wait state	P7	Pins 1 & 2 closed
Hard drive wait state select 0 wait states	P7	Pins 2 & 3 closed
í On board battery enabled	P8	Pins 2 & 3 closed
On board battery disabled	P8	Pins 1 & 2 closed
í Parity check enabled	P9	Pins 1 & 2 closed
Parity check disabled	P9	Pins 2 & 3 closed

DRAM CONFIGURATION			
Size	Bank 0	Bank 1	Bank 2
4MB	4MB	None	None
8MB	4MB	(4) 1M x 9	None
12MB	4MB	(4) 1M x 9	(4) 1M x 9
20MB	4MB	(4) 4M x 9	None
36MB	4MB	(4) 4M x 9	(4) 4M x 9

Note: Bank 0 is factory installed and is not configurable. Bank 2 is located on the memory card.

VIDEO MEMORY CONFIGURATION
Note: 1MB is factory installed and is not configurable.