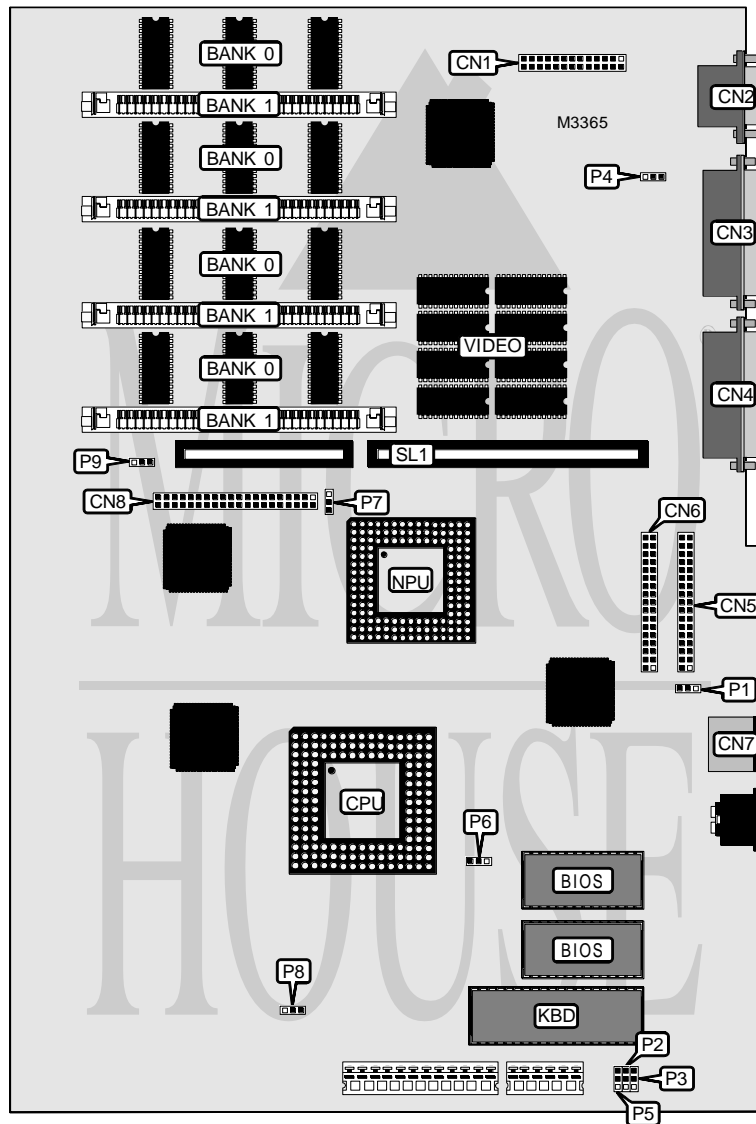


# OLIVETTI M480-10 (BA372)

<b>Processor</b>	80486SX/80487SX
<b>Processor Speed</b>	33MHz
<b>Chip Set</b>	Topcat
<b>Video Chip Set</b>	Unidentified
<b>Maximum Onboard Memory</b>	36MB (16MB on external memory card)
<b>Maximum Video Memory</b>	1MB
<b>Cache</b>	None
<b>BIOS</b>	Unidentified
<b>Dimensions</b>	330mm x 218mm
<b>I/O Options</b>	Floppy drive interfaces (2), SCSI/IDE interface, parallel port, PS/2 mouse port, serial port, riser slot, feature connector
<b>NPU Options</b>	4167



Continued on next page . . .

# OLIVETTI

## M480-10 (BA372)

... continued from previous page

CONNECTIONS			
Purpose	Location	Purpose	Location
Feature connector	CN1	Floppy drive interface 3	CN6
VGA port	CN2	PS/2 mouse port	CN7
Parallel port	CN3	SCSI/IDE interface	CN8
Serial port	CN4	Riser slot	SL1
Floppy drive interface 1/2	CN5		

USER CONFIGURABLE SETTINGS		
Function	Label	Position
í Third floppy drive interface enabled	P1	Pins 1 & 2 closed
Third floppy drive interface disabled	P1	Pins 2 & 3 closed
í Password enabled	P2	Pins 2 & 3 closed
Password disabled	P2	Pins 1 & 2 closed
í Parallel port unidirectional	P3	Pins 1 & 2 closed
Parallel port bidirectional	P3	Pins 2 & 3 closed
í Interlaced video enabled	P4	Pins 2 & 3 closed
Interlaced video disabled	P4	Pins 1 & 2 closed
í Mainboard current control maximum current	P5	Pins 1 & 2 closed
Mainboard current control minimum current	P5	Pins 2 & 3 closed
í Hard drive wait state select 1 wait state	P7	Pins 1 & 2 closed
Hard drive wait state select 0 wait states	P7	Pins 2 & 3 closed
í On board battery enabled	P8	Pins 2 & 3 closed
On board battery disabled	P8	Pins 1 & 2 closed
í Parity check enabled	P9	Pins 1 & 2 closed
Parity check disabled	P9	Pins 2 & 3 closed

DRAM CONFIGURATION			
Size	Bank 0	Bank 1	Bank 2
4MB	4MB	None	None
8MB	4MB	(4) 1M x 9	None
12MB	4MB	(4) 1M x 9	(4) 1M x 9
20MB	4MB	(4) 4M x 9	None
36MB	4MB	(4) 4M x 9	(4) 4M x 9

Note: Bank 0 is factory installed and is not configurable. Bank 2 is located on the memory card.

VIDEO MEMORY CONFIGURATION
Note: 1MB is factory installed and is not configurable.

CPU TYPE SELECTION	
Type	P6
80486SX	Pins 2 & 3 closed
80487SX	Pins 1 & 2 closed