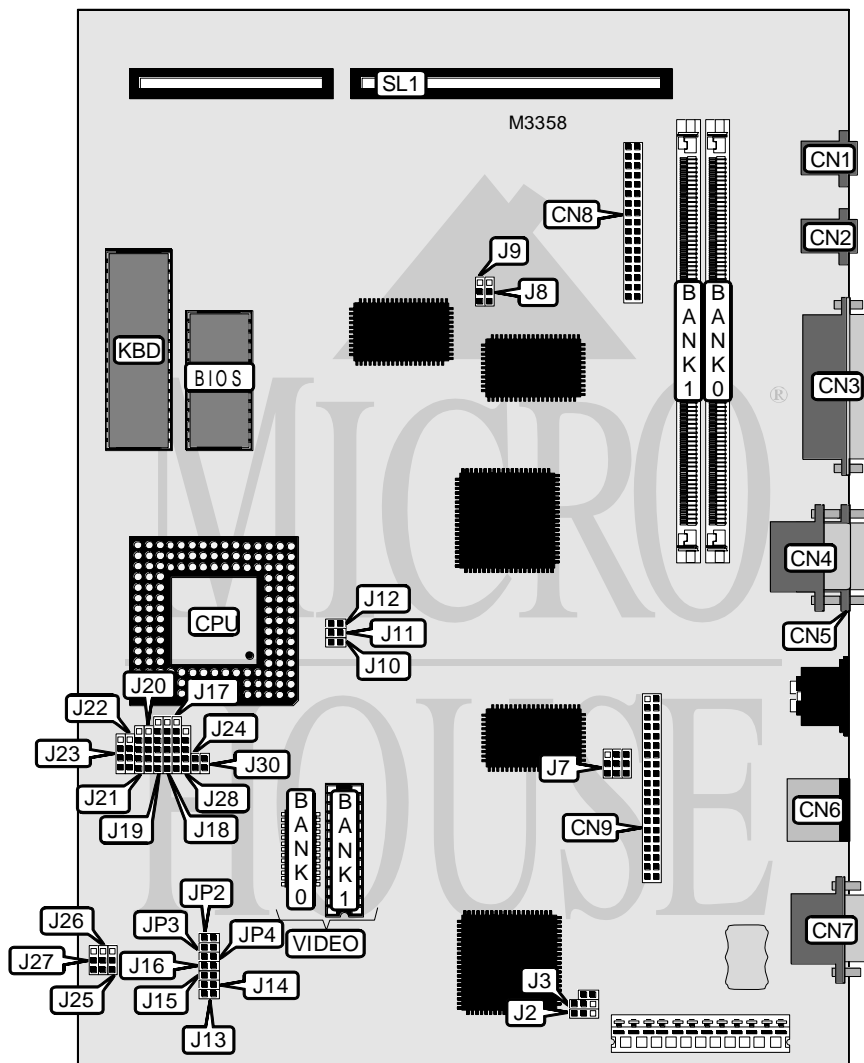


ANSEL COMMUNICATIONS, INC.

ANSELSTATION

Processor	CX486S/UMCU5S/80486SX/SL80486SX/CX486DX/80486DX/ SL80486DX/AM486DX2/(SL)AM486DX2(WT)/(SL)AM486DX2(WB)/ 80486DX2/SL80486DX2/AM486DX4/(SL)AM486DX4(WB)/ (SL)486DX4(WT)/80486DX4/P24D/P24T/CX5X86
Processor Speed	25/33/40/50(internal)/50/66(internal)/75(internal)/100(internal)MHz
Chip Set	UMC
Video Chip Set	AGI
Maximum Onboard Memory	64MB
Maximum Video Memory	1MB
Cache	None
BIOS	Award
Dimensions	235mm x 186mm
I/O Options	Floppy drive interface, IDE interface, parallel port, PS/2 mouse port, serial ports (2), VGA port, riser slot, BNC connector, RJ-45 connector
NPU Options	None



Continued on next page . . .

ANSEL COMMUNICATIONS, INC.
ANSELSTATION

... continued from previous page

CONNECTIONS			
Purpose	Location	Purpose	Location
BNC connector	CN1	VGA port	CN7
RJ-45 connector	CN2	Floppy drive interface	CN8
Parallel port	CN3	IDE interface	CN9
Serial port 2	CN4	Power LED & keylock	J28
Serial port 1	CN5	Transmit LED	J30
PS/2 mouse port	CN6	Riser slot	SL1

USER CONFIGURABLE SETTINGS		
Function	Label	Position
IDE interface enabled	J7	Pins 2 & 3 closed
IDE interface disabled	J7	Pins 1 & 2 closed
Standard DRAM interface enabled	J13	Open
75MHz DRAM clock enabled	J13	Closed
Additional DMCLK for RAS precharge time (for 256K x 16)	J14	Closed
VGA mode select interlaced	J15	Closed
VGA mode select non-interlaced	J15	Open

DRAM CONFIGURATION		
Size	Bank 0	Bank 1
1MB	(1) 256K x 36	None
2MB	(1) 256K x 36	(1) 256K x 36
2MB	(1) 512K x 36	None
3MB	(1) 512K x 36	(1) 256K x 36
3MB	(1) 256K x 36	(1) 512K x 36
4MB	(1) 1M x 36	None
4MB	(1) 512K x 36	(1) 512K x 36
5MB	(1) 1M x 36	(1) 256K x 36
5MB	(1) 256K x 36	(1) 1M x 36
6MB	(1) 1M x 36	(1) 512K x 36
8MB	(1) 2M x 36	None
8MB	(1) 1M x 36	(1) 1M x 36
9MB	(1) 256K x 36	(1) 2M x 36
10MB	(1) 2M x 36	(1) 512K x 36
12MB	(1) 2M x 36	(1) 1M x 36
12MB	(1) 1M x 36	(1) 2M x 36
16MB	(1) 2M x 36	(1) 2M x 36
16MB	(1) 4M x 36	None
18MB	(1) 4M x 36	(1) 512K x 36
20MB	(1) 4M x 36	(1) 1M x 36
32MB	(1) 8M x 36	None
32MB	(1) 4M x 36	(1) 4M x 36
64MB	(1) 8M x 36	(1) 8M x 36

Continued on next page...

ANSEL COMMUNICATIONS, INC.

ANSELSTATION

... continued from previous page

VIDEO MEMORY CONFIGURATION		
Size	Bank 0	Bank 1
512KB	(1) 256K x 16	None
1MB	(1) 256K x 16	(1) 256K x 16

Note: Bank 0 is factory installed and is not configurable.

CPU SPEED SELECTION			
Speed	J10	J11	J12
25MHz	Open	Open	Closed
33MHz	Closed	Closed	Closed
40MHz	Open	Closed	Closed
50iMHz	Open	Open	Closed
50MHz	Closed	Open	Open
66iMHz	Closed	Closed	Closed
75iMHz	Open	Open	Closed
100iMHz	Closed	Closed	Closed

CPU TYPE SELECTION			
Type	J17	J18	J19
CX486S	1 & 2, 3 & 4, 5 & 6	2 & 3, 4 & 5	1 & 2, 3 & 4
UMC U55	2 & 3	1 & 2	2 & 3
80486SX	2 & 3	Open	Open
SL80486SX	2 & 3	5 & 6	Open
CX486DX	1 & 2, 3 & 4, 5 & 6	2 & 3, 4 & 5	1 & 2, 3 & 4
80486DX	2 & 3	Open	Open
SL80486DX	1 & 2	5 & 6	1 & 2
AM486DX2	2 & 3	Open	Open
(SL)AM486DX2 (WB)	1 & 2, 4 & 5	3 & 4, 5 & 6	1 & 2, 4 & 5
(SL)AM486DX2 (WT)	1 & 2	3 & 4, 5 & 6	1 & 2, 4 & 5
80486DX2	2 & 3	Open	Open
SL80486DX2	1 & 2	5 & 6	1 & 2
AM486DX4	2 & 3	Open	Open
(SL)AM486DX4 (WB)	1 & 2, 4 & 5	3 & 4, 5 & 6	1 & 2, 4 & 5
(SL)AM486DX4 (WT)	1 & 2	3 & 4, 5 & 6	1 & 2, 4 & 5
80486DX4	1 & 2	5 & 6	1 & 2
P24D	1 & 2, 4 & 5	3 & 4, 5 & 6	1 & 2, 4 & 5
P24T	1 & 2	5 & 6	1 & 2
CX5X86	1 & 2, 4 & 5	3 & 4, 5 & 6	2 & 3

Note: Pins designated should be in the closed position.

Continued on next page...

ANSEL COMMUNICATIONS, INC.
ANSELSTATION

... continued from previous page

CPU TYPE SELECTION			
Type	J20	J22	J23
CX486S	2 & 3, 4 & 5	Open	2 & 3
UMC U5S	Open	3 & 4	2 & 3
80486SX	Open	Open	2 & 3
SL80486SX	1 & 2, 3 & 4	Open	2 & 3
CX486DX	2 & 3	1 & 2	1 & 2, 3 & 4
80486DX	Open	1 & 2	1 & 2, 3 & 4
SL80486DX	1 & 2, 3 & 4	1 & 2	1 & 2, 3 & 4
AM486DX2	Open	1 & 2	1 & 2, 3 & 4
(SL)AM486DX2 (WB)	1 & 2, 3 & 4	1 & 2, 3 & 4	1 & 2, 3 & 4
(SL)AM486DX2 (WT)	1 & 2, 3 & 4	1 & 2, 3 & 4	1 & 2, 3 & 4
80486DX2	Open	1 & 2	1 & 2, 3 & 4
SL80486DX2	1 & 2, 3 & 4	1 & 2	1 & 2, 3 & 4
AM486DX4	Open	1 & 2	1 & 2, 3 & 4
(SL)AM486DX4 (WB)	1 & 2, 3 & 4	1 & 2, 3 & 4	1 & 2, 3 & 4
(SL)AM486DX4 (WT)	1 & 2, 3 & 4	1 & 2, 3 & 4	1 & 2, 3 & 4
80486DX4	1 & 2, 3 & 4	1 & 2	1 & 2, 3 & 4
P24D	1 & 2, 3 & 4	1 & 2	1 & 2, 3 & 4
P24T	1 & 2, 3 & 4	2 & 3	1 & 2, 3 & 4
CX5X86	1 & 2, 3 & 4	1 & 2	1 & 2, 3 & 4

Note: Pins designated should be in the closed position.

CPU MULTIPLIER SELECTION		
CPU type	Multiplier	J21
(SL)AM486DX2	2x	Pins 3 & 4 closed
(SL)AM486DX4	2x	Pins 3 & 4 closed
80486DX4	2x	Pins 2 & 3 closed
80486DX4	2.5x	Pins 1 & 2 closed
(SL)AM486DX2	3x	Open
(SL)AM486DX4	3x	Open
80486DX4	3x	Open
All other CPU types		Open

CPU MULTIPLIER SELECTION		
CPU type	Multiplier	J24
AM486DX2	2x	Pins 1 & 2 closed
AM486DX4	2x	Pins 1 & 2 closed
AM486DX2	3x	Open
AM486DX4	3x	Open
All other CPU types		Open

Continued on next page...

ANSEL COMMUNICATIONS, INC.

ANSELSTATION

... continued from previous page

CPU VOLTAGE SELECTION						
Voltage	JP2	JP3	JP4	J25	J26	J27
3.45v	Closed	Open	Open	1 & 2	1 & 2	1 & 2
3.6v	Open	Closed	Open	1 & 2	1 & 2	1 & 2
4v	Open	Open	Closed	1 & 2	1 & 2	1 & 2
5v	Open	Open	Open	2 & 3	2 & 3	2 & 3

Note: Pins designated should be in the closed position.

BUS SPEED SELECTION	
Setting	J16
<= 33MHz	Closed
>33 MHz	Open

DMA CHANNEL SELECTION		
Channel	J8	J9
1	Pins 1 & 2 closed	Pins 1 & 2 closed
3	Pins 2 & 3 closed	Pins 2 & 3 closed

ON BOARD VGA SELECTION		
Setting	J2	J3
Enabled	Pins 1 & 2 closed	Pins 1 & 2 closed
Disabled	Pins 2 & 3 closed	Pins 2 & 3 closed

MISCELLANEOUS TECHNICAL NOTE
Note: Jumpers not labeled may be reserved for factory use.