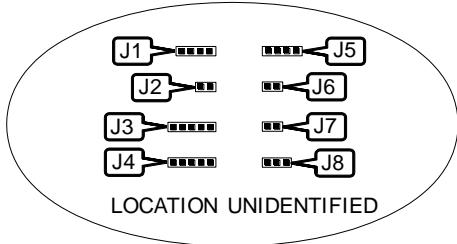
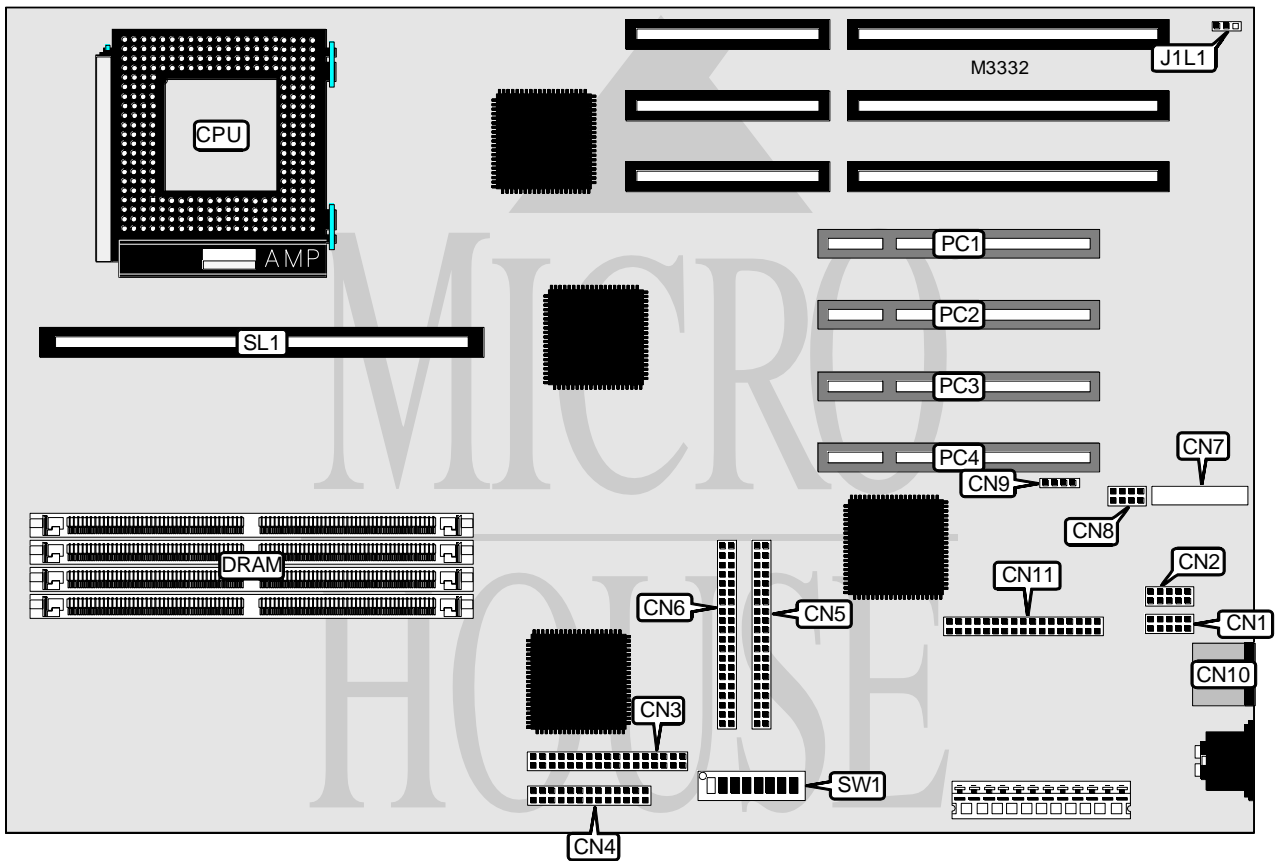


INTEL CORPORATION ENDEAVOUR

Processor	Pentium
Processor Speed	75/90/100/120MHz
Chip Set	Intel
Video Chip Set	Unidentified
Maximum Onboard Memory	128MB (EDO supported)
Maximum Video Memory	Unidentified
Cache	256/512KB
BIOS	AMI
Dimensions	330mm x 218mm
I/O Options	32-bit PCI slots (4), CD-ROM interface, floppy drive interface, green PC connector, IDE interfaces (2), parallel port, PS/2 mouse port, serial ports (2), cache slot, IR connector, audio connector, wave table connector, video connector
NPU Options	None



Continued on next page . . .

INTEL CORPORATION ENDEAVOUR

... continued from previous page

CONNECTIONS			
Function	Label	Function	Label
Serial port	CN1	Speaker	J1
Serial port	CN2	Green PC connector	J2
Floppy drive interface	CN3	IR connector	J3
Parallel port	CN4	Power LED & keylock	J4
IDE interface	CN5	IDE interface LED	J5
IDE interface	CN6	Turbo LED	J6
Video connector (optional)	CN7	Reset switch	J7
Wave table connector	CN8	Chassis fan power	J8
CD-ROM interface	CN9	32-bit PCI slots	PC1 - PC4
PS/2 mouse port	CN10	Cache slot	SL1
Audio connector	CN11		

USER CONFIGURABLE SETTINGS		
Setting	Label	Position
í Flash BIOS normal operation	J1L1	Pins 1 & 2 closed
Flash BIOS recovery mode	J1L1	Pins 2 & 3 closed
í Adjusts ISA bus to CPU type installed	SW1/1	Off
í CPU type select non VRE compliant	SW1/2	Off
CPU type select VRE compliant	SW1/2	On
í Password normal operation	SW1/3	Off
Password clear	SW1/3	On
í CMOS memory normal operation	SW1/4	Off
CMOS memory clear	SW1/4	On
í Setup access enabled	SW1/5	Off
Setup access disabled	SW1/5	On
í Internal CPU bus clock select	SW1/6	Off

DRAM CONFIGURATION		
Size	Bank 0	Bank 1
8MB	None	(2) 1M x 36
8MB	(2) 1M x 36	None
16MB	None	(2) 2M x 36
16MB	(2) 2M x 36	None
16MB	(2) 1M x 36	(2) 1M x 36

Continued on next page...

INTEL CORPORATION E N D E A V O U R

... continued from previous page

DRAM CONFIGURATION (CON'T)		
Size	Bank 0	Bank 1
24MB	(2) 2M x 36	(2) 1M x 36
24MB	(2) 1M x 36	(2) 2M x 36
32MB	(2) 4M x 36	None
32MB	(2) 2M x 36	(2) 2M x 36
32MB	None	(2) 4M x 36
40MB	(2) 4M x 36	(2) 1M x 36
40MB	(2) 1M x 36	(2) 4M x 36
48MB	(2) 4M x 36	(2) 2M x 36
48MB	(2) 2M x 36	(2) 4M x 36
64MB	(2) 8M x 36	None
64MB	(2) 4M x 36	(2) 4M x 36
64MB	None	(2) 8M x 36
72MB	(2) 8M x 36	(2) 1M x 36
72MB	(2) 1M x 36	(2) 8M x 36
80MB	(2) 8M x 36	(2) 2M x 36
80MB	(2) 2M x 36	(2) 8M x 36
96MB	(2) 8M x 36	(2) 4M x 36
96MB	(2) 4M x 36	(2) 8M x 36
128MB	(2) 8M x 36	(2) 8M x 36

Note: Board accepts EDO memory. The orientation of the banks is unidentified.

CACHE CONFIGURATION	
Size	SL1
256KB	Installed
512KB	Installed

VIDEO MEMORY CONFIGURATION
Note: Depending on board version, video memory is installed. The maximum memory and chip types are unidentified.

CPU SPEED SELECTION		
Speed	SW1/7	SW1/8
75MHz	On	Off
90MHz	Off	Off
100MHz	On	On
120MHz	Off	Off

MISCELLANEOUS TECHNICAL NOTE
The location of pin 1s on the connectors are unidentified.