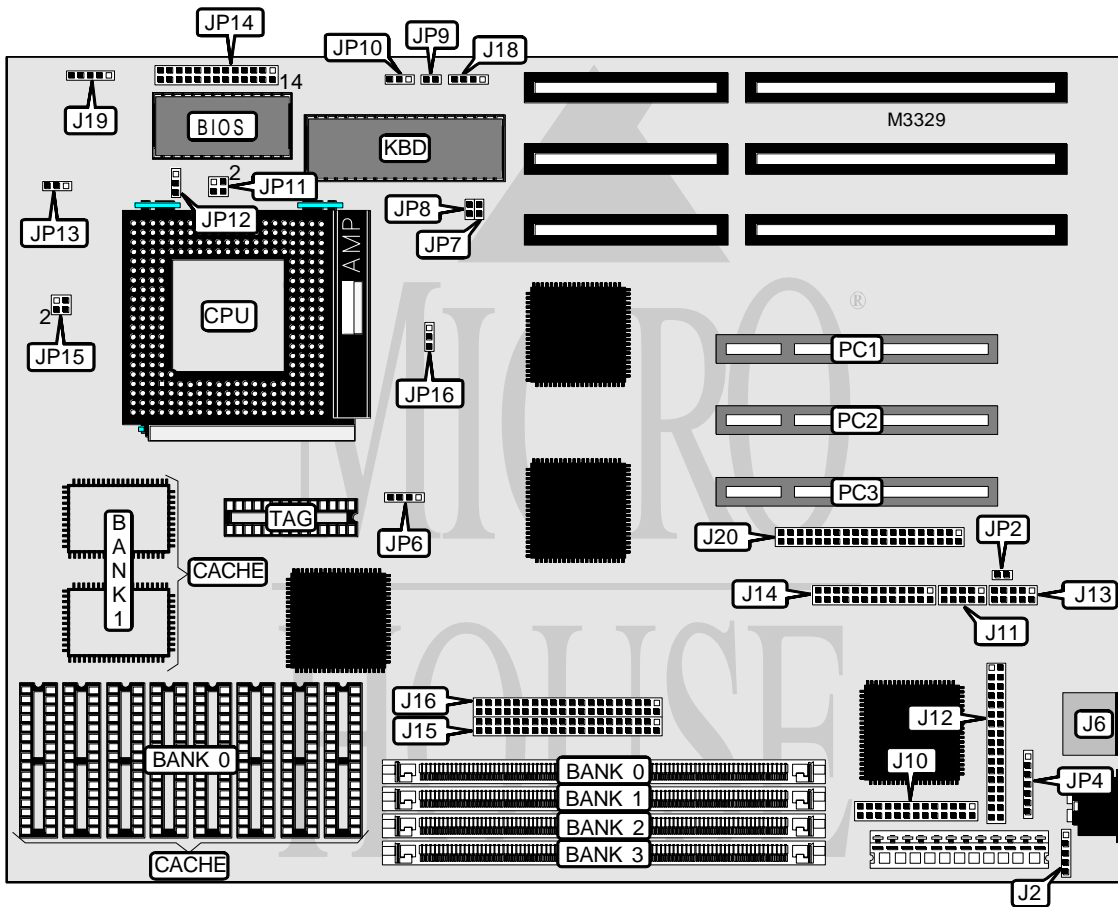


BIOSTAR MICROTECH INTERNATIONAL CORPORATION

MB-8500SAC

Processor	CX M1/AM K5/Pentium
Processor Speed	75/90/100/120/133/150/166/180MHz
Chip Set	Unidentified
Video Chip Set	SIS
Maximum Onboard Memory	128MB (EDO supported)
Maximum Video Memory	None
Cache	256/512/1024KB
BIOS	Award
Dimensions	280mm x 220mm
I/O Options	32-bit PCI slots (3), floppy drive interface, green PC connector, IDE interfaces (2), parallel port, PS/2 mouse port, serial ports (2), feature connector, audio connector
NPU Options	None



Continued on next page . . .

BIOSTAR MICROTECH INTERNATIONAL CORPORATION

MB-8500SAC

... continued from previous page

CONNECTIONS			
Function	Label	Function	Label
PS/2 mouse port	J6	Audio connector	J20
VGA IDC connector	J7	Chassis fan power	JP12
VGA D type connector	J8	Speaker	JP14 pins 1 - 4
Feature connector	J10	Power LED & keylock	JP14 pins 5 - 9
Serial port 2	J11	Turbo LED	JP14 pins 10 & 11
Floppy drive interface	J12	Reset switch	JP14 pins 12 & 13
Serial port 1	J13	Green PC connector	JP14 pins 17 & 18
Parallel port	J14	IDE interface LED	JP14 pins 20 & 21
IDE interface 1	J15	VCC ground connector	JP14 pins 25 & 26
IDE interface 2	J16	32-bit PCI slots	PC1 - PC3
External battery	J18		

Note: J6, J7 and J8 are optional. Only one will be installed where J6 is shown.

USER CONFIGURABLE SETTINGS		
Setting	Label	Position
Jumper information unavailable	J2	N/A
Jumper information unavailable	JP4	Unidentified
í CMOS memory normal operation	J18	Open
CMOS memory clear	J18	Pins 3 & 4 closed
Battery type select external	J18	Closed
í Jumper information unavailable	J19	Unidentified
í Factory configured - do not alter	JP2	Unidentified
í Battery type select internal	JP9	Closed
Battery type select external	JP9	Open
Flash BIOS voltage select 12v	JP10	Pins 1 & 2 closed
Flash BIOS voltage select 5v	JP10	Pins 2 & 3 closed
Flash BIOS EPROM or 0v flash	JP10	Open

DRAM CONFIGURATION				
Size	Bank 0	Bank 1	Bank 2	Bank 3
4MB	(1) 1M x 36	None	None	None
8MB	(1) 2M x 36	None	None	None
8MB	(1) 1M x 36	(1) 1M x 36	None	None
12MB	(1) 2M x 36	(1) 1M x 36	None	None
12MB	(1) 1M x 36	(1) 2M x 36	None	None
16MB	(1) 4M x 36	None	None	None
16MB	(1) 2M x 36	(1) 2M x 36	None	None
16MB	(1) 1M x 36	(1) 1M x 36	(1) 1M x 36	(1) 1M x 36
20MB	(1) 4M x 36	(1) 1M x 36	None	None
20MB	(1) 2M x 36	(1) 1M x 36	(1) 1M x 36	(1) 1M x 36

Continued on next page. . .

BIOSTAR MICROTECH INTERNATIONAL CORPORATION

MB-8500SAC

... continued from previous page

DRAM CONFIGURATION (CON'T)				
Size	Bank 0	Bank 1	Bank 2	Bank 3
20MB	(1) 1M x 36	(1) 4M x 36	None	None
24MB	(1) 4M x 36	(1) 2M x 36	None	None
24MB	(1) 2M x 36	(1) 4M x 36	None	None
28MB	(1) 4M x 36	(1) 1M x 36	(1) 1M x 36	(1) 1M x 36
28MB	(1) 1M x 36	(1) 2M x 36	(1) 2M x 36	(1) 2M x 36
32MB	(1) 8M x 36	None	None	None
32MB	(1) 4M x 36	(1) 4M x 36	None	None
32MB	(1) 2M x 36	(1) 2M x 36	(1) 2M x 36	(1) 2M x 36
36MB	(1) 8M x 36	(1) 1M x 36	None	None
36MB	(1) 1M x 36	(1) 8M x 36	None	None
40MB	(1) 8M x 36	(1) 2M x 36	None	None
40MB	(1) 4M x 36	(1) 2M x 36	(1) 2M x 36	(1) 2M x 36
40MB	(1) 2M x 36	(1) 8M x 36	None	None
44MB	(1) 8M x 36	(1) 1M x 36	(1) 1M x 36	(1) 1M x 36
48MB	(1) 8M x 36	(1) 4M x 36	None	None
48MB	(1) 4M x 36	(1) 8M x 36	None	None
100MB	(1) 1M x 36	(1) 8M x 36	(1) 8M x 36	(1) 8M x 36
104MB	(1) 2M x 36	(1) 8M x 36	(1) 8M x 36	(1) 8M x 36
112MB	(1) 4M x 36	(1) 8M x 36	(1) 8M x 36	(1) 8M x 36
128MB	(1) 8M x 36	(1) 8M x 36	(1) 8M x 36	(1) 8M x 36

Note: Board accepts EDO memory.

CACHE CONFIGURATION			
Size	Bank 0	Bank 1	TAG
256KB (A)	None	(2) 32K x 32	None
256KB (B)	(8) 32K x 8	None	(1) 8K x 8
512KB	(8) 64K x 8	None	(1) 32K x 8
1MB	(8) 128K x 8	None	(1) 32K x 8

Note: Board will either have asynchronous or synchronous pipeline burst cache installed.

CACHE JUMPER CONFIGURATION	
Size	JP6
256KB (B)	Open
512KB	Pins 1 & 2 closed
1MB	Pins 1 & 2, 3 & 4 closed

CPU TYPE SELECTION		
Type	JP15	JP16
P54C/CQS/CT	Pins 1 & 2, 3 & 4 closed	Pins 1 & 2 closed
P55C/CT	Open	Pins 2 & 3 closed

Continued on next page...

BIOSTAR MICROTECH INTERNATIONAL CORPORATION
MB-8500SAC

... continued from previous page

CPU TYPE SELECTION		
Type	JP15	JP16
P54C/CQS/CT	Pins 1 & 2, 3 & 4 closed	Pins 1 & 2 closed
P55C/CT	Open	Pins 2 & 3 closed

CPU SPEED SELECTION			
Speed	JP7	JP8	JP11
75MHz	Open	Closed	Open
90MHz	Closed	Open	Open
100MHz	Open	Open	Open
120MHz	Closed	Open	Pins 1 & 2 closed
133MHz	Open	Open	Pins 1 & 2 closed
150MHz	Closed	Open	Pins 1 & 2, 3 & 4 closed
166MHz	Open	Open	Pins 1 & 2, 3 & 4 closed
180MHz	Closed	Open	Pins 3 & 4 closed

CPU VOLTAGE SELECTION	
Voltage	JP13
3.4v (VRE CPU)	Pins 1 & 2 closed
3.5v (VR CPU)	Pins 2 & 3 closed

CPU VOLTAGE SELECTION	
Voltage	JP16
3.3v (P55C/CT)	Pins 2 & 3 closed
5v (P54C/CQS/CT)	Pins 1 & 2 closed

MISCELLANEOUS TECHNICAL NOTE
 Depending on board version, a VGA D type port or a serial port could be installed where J6 is shown.