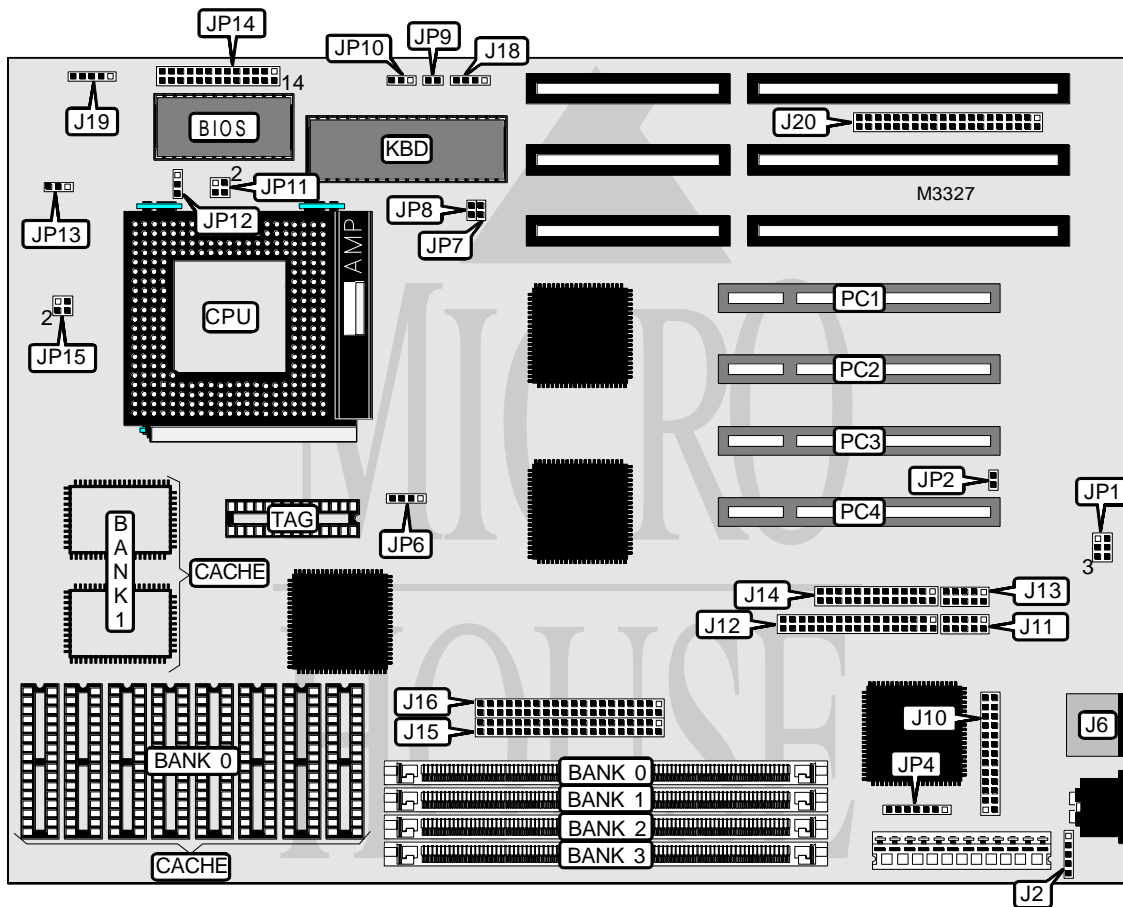


# BIOSTAR MICROTECH INTERNATIONAL CORPORATION

## MB-6500SAC

<b>Processor</b>	CX M1/AM K5/Pentium
<b>Processor Speed</b>	75/90/100/120/133/150/166/180MHz
<b>Chip Set</b>	SIS
<b>Maximum Onboard Memory</b>	128MB
<b>Cache</b>	256/512/1024KB
<b>BIOS</b>	Award
<b>Dimensions</b>	280mm x 220mm
<b>I/O Options</b>	32-bit PCI slots (4), floppy drive interface, green PC connector, IDE interfaces (2), parallel port, PS/2 mouse port, serial ports (2), feature connector, audio connector
<b>NPU Options</b>	None



Continued on next page . . .

# BIOSTAR MICROTECH INTERNATIONAL CORPORATION

## MB - 6500SAC

... continued from previous page

CONNECTIONS			
Function	Label	Function	Label
PS/2 mouse port	J6	External battery	J18
VGA IDC connector (optional)	J7	Audio connector	J20
VGA D type connector (optional)	J8	Chassis fan power	JP12
Serial port 1 (optional)	J9	Speaker	JP14 pins 1 - 4
Feature connector	J10	Power LED & keylock	JP14 pins 5 - 9
Serial port 2	J11	Turbo LED	JP14 pins 10 & 11
Floppy drive interface	J12	Reset switch	JP14 pins 12 & 13
Serial port 1	J13	Green PC connector	JP14 pins 17 & 18
Parallel port	J14	IDE interface LED	JP14 pins 20 & 21
IDE interface 1	J15	VCC ground connector	JP14 pins 25 & 26
IDE interface 2	J16	32-bit PCI slots	PC1 - PC4

Note: J6, J7, J8 and J9 are optional. Only one will be installed where J6 is shown.

USER CONFIGURABLE SETTINGS		
Setting	Label	Position
Jumper information unavailable	J2	Unidentified
í CMOS memory normal operation	J18	Open
CMOS memory clear	J18	Pins 3 & 4 closed
Battery type select external	J18	Closed
Jumper information unavailable	J19	Unidentified
Serial port 2 set as serial port	JP1	Pins 1 & 2, 4 & 5 closed
Serial port 2 set as IR connector	JP1	Pins 2 & 3, 5 & 6 closed
í Factory configured - do not alter	JP2	Unidentified
í Battery type select internal	JP9	Closed
Battery type select external	JP9	Open
Flash BIOS voltage select 12v	JP10	Pins 1 & 2 closed
Flash BIOS voltage select 5v	JP10	Pins 2 & 3 closed
Flash BIOS EPROM or 0v flash	JP10	Open

DRAM CONFIGURATION				
Size	Bank 0	Bank 1	Bank 2	Bank 3
4MB	(1) 1M x 36	None	None	None
8MB	(1) 2M x 36	None	None	None
8MB	(1) 1M x 36	(1) 1M x 36	None	None
12MB	(1) 2M x 36	(1) 1M x 36	None	None
12MB	(1) 1M x 36	(1) 2M x 36	None	None
16MB	(1) 4M x 36	None	None	None
16MB	(1) 2M x 36	(1) 2M x 36	None	None
16MB	(1) 1M x 36	(1) 1M x 36	(1) 1M x 36	(1) 1M x 36
20MB	(1) 4M x 36	(1) 1M x 36	None	None
20MB	(1) 2M x 36	(1) 1M x 36	(1) 1M x 36	(1) 1M x 36

Continued on next page...

# BIOSTAR MICROTECH INTERNATIONAL CORPORATION

## MB-6500SAC

... continued from previous page

DRAM CONFIGURATION (CON'T)				
Size	Bank 0	Bank 1	Bank 2	Bank 3
20MB	(1) 1M x 36	(1) 4M x 36	None	None
24MB	(1) 4M x 36	(1) 2M x 36	None	None
24MB	(1) 2M x 36	(1) 4M x 36	None	None
28MB	(1) 4M x 36	(1) 1M x 36	(1) 1M x 36	(1) 1M x 36
28MB	(1) 1M x 36	(1) 2M x 36	(1) 2M x 36	(1) 2M x 36
32MB	(1) 8M x 36	None	None	None
32MB	(1) 4M x 36	(1) 4M x 36	None	None
32MB	(1) 2M x 36	(1) 2M x 36	(1) 2M x 36	(1) 2M x 36
36MB	(1) 8M x 36	(1) 1M x 36	None	None
36MB	(1) 1M x 36	(1) 8M x 36	None	None
40MB	(1) 8M x 36	(1) 2M x 36	None	None
40MB	(1) 4M x 36	(1) 2M x 36	(1) 2M x 36	(1) 2M x 36
40MB	(1) 2M x 36	(1) 8M x 36	None	None
44MB	(1) 8M x 36	(1) 1M x 36	(1) 1M x 36	(1) 1M x 36
48MB	(1) 8M x 36	(1) 4M x 36	None	None
48MB	(1) 4M x 36	(1) 8M x 36	None	None
100MB	(1) 1M x 36	(1) 8M x 36	(1) 8M x 36	(1) 8M x 36
104MB	(1) 2M x 36	(1) 8M x 36	(1) 8M x 36	(1) 8M x 36
112MB	(1) 4M x 36	(1) 8M x 36	(1) 8M x 36	(1) 8M x 36
128MB	(1) 8M x 36	(1) 8M x 36	(1) 8M x 36	(1) 8M x 36

Note: Board accepts EDO memory.

CACHE SIZE			
Size	Bank 0	Bank 1	TAG
256KB (A)	None	(2) 32K x 32	None
256KB (B)	(8) 32K x 8	None	(1) 8K x 8
512KB	(8) 64K x 8	None	(1) 32K x 8
1MB	(8) 128K x 8	None	(1) 32K x 8

Note: Board will either have asynchronous or synchronous cache installed.

CACHE JUMPER	
Size	JP6
256KB (B)	Open
512KB	Pins 1 & 2 closed
1MB	Pins 1 & 2, 3 & 4 closed

CPU TYPE	
Setting	JP15
P54C/CQS/CT	Pins 1 & 2, 3 & 4 closed
P55C/CT	Open

Continued on next page...

**BIOSTAR MICROTECH INTERNATIONAL CORPORATION**  
**MB-6500SAC**

... continued from previous page

CPU TYPE	
Setting	JP15
P54C/CQS/CT	Pins 1 & 2, 3 & 4 closed
P55C/CT	Open

CPU SPEED			
Setting	JP7	JP8	JP11
75MHz	Open	Closed	Open
90MHz	Closed	Open	Open
100MHz	Open	Open	Open
120MHz	Closed	Open	Pins 1 & 2 closed
133MHz	Open	Open	Pins 1 & 2 closed
150MHz	Closed	Open	Pins 1 & 2, 3 & 4 closed
166MHz	Open	Open	Pins 1 & 2, 3 & 4 closed
180MHz	Closed	Open	Pins 3 & 4 closed

CPU VOLTAGE	
Setting	JP13
3.4v	Pins 1 & 2 closed
3.5v	Pins 2 & 3 closed

CD-ROM	
Setting	JP4
Panasonic	Pins 1 - 4 closed
Mitsumi	Pins 2 - 5 closed
Sony	Pins 4 - 7 closed
Oak	Pins 2 - 4 closed