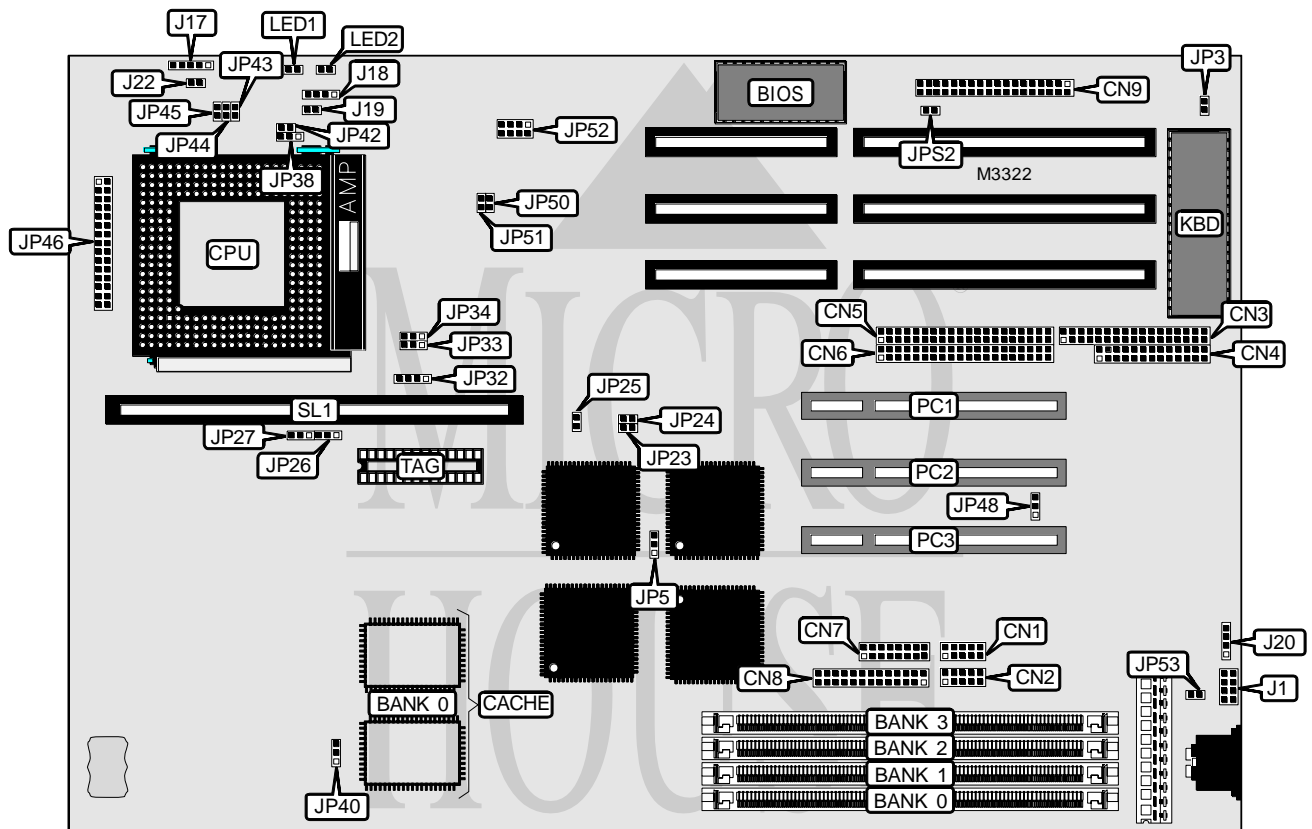


# SOYO COMPUTER CO., LTD.

## SY-5SM2/M5

<b>Processor</b>	CX M1/Pentium
<b>Processor Speed</b>	75/90/100/120/133/150/166/180/200MHz
<b>Chip Set</b>	SIS
<b>Maximum Onboard Memory</b>	256MB
<b>Cache</b>	256/512KB
<b>BIOS</b>	Award
<b>Dimensions</b>	330mm x 220mm
<b>I/O Options</b>	32-bit PCI slots (3), green PC connector, floppy drive interface, IDE interfaces (2), parallel port, PS/2 mouse interface, serial ports (2), VGA feature connector, VGA interface, cache slot, audio connector, wave table connector, VRM connector
<b>NPU Options</b>	None



J21      JP31  
 JP28    JP36  
 JP29    JP37  
 JP30    JP47  
  
 LOCATION UNIDENTIFIED

*Continued on next page...*

# SOYO COMPUTER CO., LTD.

## SY-5SM2/M5

... continued from previous page

CONNECTIONS			
Function	Label	Function	Label
Serial port 2	CN1	Speaker	J18
Serial port 1	CN2	Reset switch	J19
Floppy drive interface	CN3	External battery	J20
Parallel port	CN4	Turbo LED	J22
IDE interface 2	CN5	Green PC connector	JP25
IDE interface 1	CN6	VRM connector	JP46
VGA interface	CN7	Wave table connector	JP52
VGA feature connector	CN8	IDE interface LED 1	LED1
Audio connector	CN9	IDE interface LED 2	LED2
PS/2 mouse interface	J1	32-bit PCI slots	PC1 - PC3
Power LED & keylock	J17	Cache slot	SL1

Note: CN7, CN8 and JP46 are optional and may not be present.

USER CONFIGURABLE SETTINGS		
Setting	Label	Position
í Factory configured - do not alter	J21	Unidentified
í Monitor type select color	JP3	Closed
Monitor type select monochrome	JP3	Open
í CMOS memory normal operation	JP5	Pins 1 & 2 closed
CMOS memory clear	JP5	Pins 2 & 3 closed
í Factory configured - do not alter	JP28	Unidentified
í Factory configured - do not alter	JP29	Unidentified
í Factory configured - do not alter	JP30	Pins 3 & 5, 4 & 6 closed
í Factory configured - do not alter	JP31	Unidentified
í Factory configured - do not alter	JP32	Pins 2 & 3 closed
í Pipeline mode enabled	JP33	Pins 2 & 3 closed
Pipeline mode disabled	JP33	Pins 1 & 2 closed
í Cache type select write back	JP34	Pins 1 & 2 closed
Cache type select write through	JP34	Pins 2 & 3 closed
í Factory configured - do not alter	JP36	Closed
í Factory configured - do not alter	JP37	Closed
í Factory configured - do not alter	JP47	Unidentified
í Factory configured - do not alter	JP48	Pins 1 & 2 closed
í Factory configured - do not alter	JP50	Closed
í Factory configured - do not alter	JP51	Closed
í Factory configured - do not alter	JP53	Closed
í PS/2 mouse disabled	JPS2	Open
PS/2 mouse enabled	JPS2	Closed

Continued on next page...

SOYO COMPUTER CO., LTD.  
SY-5SM2/M5

... continued from previous page

DRAM				
Size	Bank 0	Bank 1	Bank 2	Bank 3
2MB	None	(1) 512K x 32	None	None
2MB	None	None	None	(1) 512K x 32
2MB	(1) 256K x 36	(1) 256K x 36	None	None
4MB	None	(1) 1M x 32	None	None
4MB	None	None	None	(1) 1M x 32
4MB	(1) 256K x 36	(1) 256K x 36	(1) 256K x 36	(1) 256K x 36
4MB	(1) 512K x 36	(1) 512K x 36	None	None
6MB	(1) 512K x 36	(1) 512K x 36	(1) 256K x 36	(1) 256K x 36
6MB	(1) 256K x 36	(1) 256K x 36	(1) 512K x 36	(1) 512K x 36
8MB	None	(1) 2M x 32	None	None
8MB	None	None	None	(1) 2M x 32
8MB	(1) 1M x 36	(1) 1M x 36	None	None
8MB	(1) 512K x 36	(1) 512K x 36	(1) 512K x 36	(1) 512K x 36
10MB	(1) 1M x 36	(1) 1M x 36	(1) 256K x 36	(1) 256K x 36
10MB	(1) 256K x 36	(1) 256K x 36	(1) 1M x 36	(1) 1M x 36
12MB	(1) 1M x 36	(1) 1M x 36	(1) 512K x 36	(1) 512K x 36
12MB	(1) 512K x 36	(1) 512K x 36	(1) 1M x 36	(1) 1M x 36
16MB	None	(1) 4M x 32	None	None
16MB	None	None	None	(1) 4M x 32
16MB	(1) 2M x 36	(1) 2M x 36	None	None
16MB	(1) 1M x 36	(1) 1M x 36	(1) 1M x 36	(1) 1M x 36
18MB	(1) 2M x 36	(1) 2M x 36	(1) 256K x 36	(1) 256K x 36
18MB	(1) 256K x 36	(1) 256K x 36	(1) 2M x 36	(1) 2M x 36
20MB	(1) 2M x 36	(1) 2M x 36	(1) 512K x 36	(1) 512K x 36
20MB	(1) 512K x 36	(1) 512K x 36	(1) 2M x 36	(1) 2M x 36
24MB	(1) 2M x 36	(1) 2M x 36	(1) 1M x 36	(1) 1M x 36
24MB	(1) 1M x 36	(1) 1M x 36	(1) 2M x 36	(1) 2M x 36
32MB	(1) 4M x 36	(1) 4M x 36	None	None
32MB	(1) 2M x 36	(1) 2M x 36	(1) 2M x 36	(1) 2M x 36
34MB	(1) 4M x 36	(1) 4M x 36	(1) 256K x 36	(1) 256K x 36
34MB	(1) 256K x 36	(1) 256K x 36	(1) 4M x 36	(1) 4M x 36
36MB	(1) 4M x 36	(1) 4M x 36	(1) 512K x 36	(1) 512K x 36
36MB	(1) 512K x 36	(1) 512K x 36	(1) 4M x 36	(1) 4M x 36
40MB	(1) 4M x 36	(1) 4M x 36	(1) 1M x 36	(1) 1M x 36
40MB	(1) 1M x 36	(1) 1M x 36	(1) 4M x 36	(1) 4M x 36
48MB	(1) 4M x 36	(1) 4M x 36	(1) 2M x 36	(1) 2M x 36
48MB	(1) 2M x 36	(1) 2M x 36	(1) 4M x 36	(1) 4M x 36
64MB	None	(1) 16M x 32	None	None
64MB	None	None	None	(1) 16M x 32
64MB	(1) 4M x 36	(1) 4M x 36	(1) 4M x 36	(1) 4M x 36
128MB	(1) 16M x 36	(1) 16M x 36	None	None

Continued on next page...

**SOYO COMPUTER CO., LTD.**  
**SY-5SM2/M5**

... continued from previous page

DRAM (CON'T)				
Size	Bank 0	Bank 1	Bank 2	Bank 3
130MB	(1) 16M x 36	(1) 16M x 36	(1) 256K x 36	(1) 256K x 36
130MB	(1) 256K x 36	(1) 256K x 36	(1) 16M x 36	(1) 16M x 36
132MB	(1) 16M x 36	(1) 16M x 36	(1) 512K x 36	(1) 512K x 36
132MB	(1) 512K x 36	(1) 512K x 36	(1) 16M x 36	(1) 16M x 36
136MB	(1) 16M x 36	(1) 16M x 36	(1) 1M x 36	(1) 1M x 36
136MB	(1) 1M x 36	(1) 1M x 36	(1) 16M x 36	(1) 16M x 36
144MB	(1) 16M x 36	(1) 16M x 36	(1) 2M x 36	(1) 2M x 36
144MB	(1) 2M x 36	(1) 2M x 36	(1) 16M x 36	(1) 16M x 36
160MB	(1) 16M x 36	(1) 16M x 36	(1) 4M x 36	(1) 4M x 36
160MB	(1) 4M x 36	(1) 4M x 36	(1) 16M x 36	(1) 16M x 36
256MB	(1) 16M x 36	(1) 16M x 36	(1) 16M x 36	(1) 16M x 36

Note: Board accepts EDO memory. Board also accepts X 32 SIMMs. If only Bank 1 or Bank 3 is populated, x 32 SIMMs must be used.

CACHE SIZE			
Size	Bank 0	TAG	SL1
256KB	(2) 32K x 32	(1) 8K/16K x 8	Not installed
512KB	(2) 32K x 32	(1) 16K/32K x 8	Installed

CACHE JUMPER		
Size	JP26	JP27
256KB	Pins 1 & 2 closed	Pins 1 & 2 closed
512KB	Pins 2 & 3 closed	Pins 1 & 2 closed

CPU BURST MODE TYPE	
Setting	JP40
Cyrix (linear burst)	Pins 2 & 3 closed
Intel (interleave burst)	Pins 1 & 2 closed

CPU SPEED (CYRIX)					
Setting	Multiplier	JP23	JP24	JP38	JP42
120MHz	2x	Closed	Closed	Pins 2 & 3 closed	Open
150MHz	2x	Closed	Open	Pins 2 & 3 closed	Open
166MHz	2x	Open	Closed	Pins 2 & 3 closed	Open
200MHz	3x	Closed	Closed	Pins 1 & 2 closed	Open

Continued on next page...

SOYO COMPUTER CO., LTD.  
SY-5SM2/M5

... continued from previous page

CPU SPEED (INTEL)					
Setting	Multiplier	JP23	JP24	JP38	JP42
75MHz	1.5x	Closed	Closed	Pins 1 & 2 closed	Open
90MHz	1.5x	Closed	Open	Pins 1 & 2 closed	Open
100MHz	1.5x	Open	Closed	Pins 1 & 2 closed	Open
100MHz	2x	Closed	Closed	Pins 2 & 3 closed	Open
120MHz	2x	Closed	Open	Pins 2 & 3 closed	Open
133MHz	2x	Open	Closed	Pins 2 & 3 closed	Open
150MHz	2.5x	Closed	Open	Pins 2 & 3 closed	Closed
166MHz	2.5x	Open	Closed	Pins 2 & 3 closed	Closed
180MHz	3x	Closed	Closed	Pins 1 & 2 closed	Closed
200MHz	3x	Open	Closed	Pins 1 & 2 closed	Closed

CPU VOLTAGE			
Setting	JP43	JP44	JP45
3.3v	Closed	Open	Open
3.45v - 3.6v	Open	Closed	Open