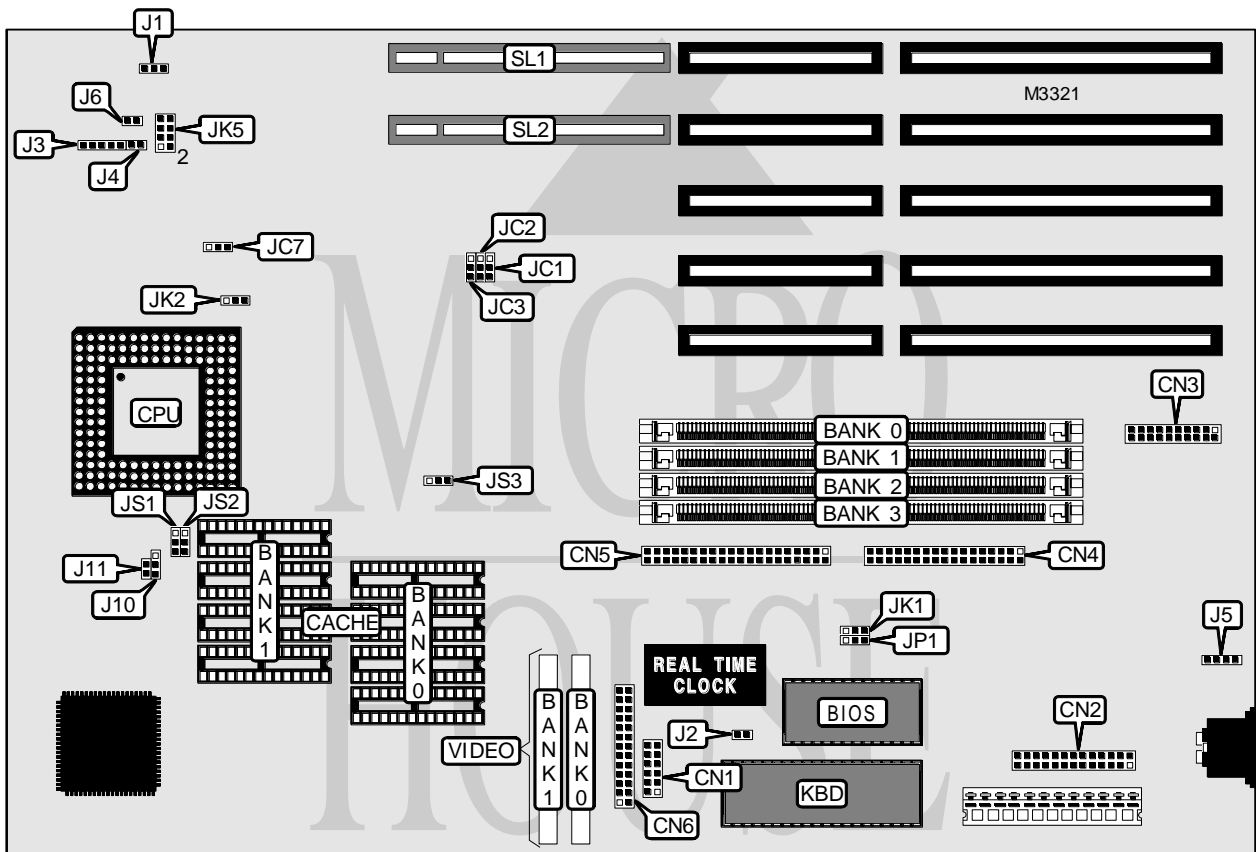


# EVEREX SYSTEMS, INC. TEMPO VAV

<b>Processor</b>	80486SX/80486DX/486Overdrive/80486DX2
<b>Processor Speed</b>	25/33/50(internal)/66(internal)MHz
<b>Chip Set</b>	Unidentified
<b>Maximum Onboard Memory</b>	64MB
<b>Cache</b>	64/128/2564KB
<b>BIOS</b>	Unidentified
<b>Dimensions</b>	330mm x 218mm
<b>I/O Options</b>	32-bit VESA local bus slots (2), floppy drive interface, IDE interface, parallel port, PS/2 mouse interface, serial ports (2), VGA feature connector, VGA interface
<b>NPU Options</b>	None



CONNECTIONS			
Function	Label	Function	Label
VGA interface	CN1	Turbo LED	J2
Parallel port	CN2	Power LED & keylock	J3
Serial ports	CN3	Reset switch	J4
Floppy drive interface	CN4	PS/2 mouse interface	J5
IDE interface	CN5	IDE interface LED	J6
VGA feature connector	CN6	32-bit VESA local bus slots	SL1 & SL2
Chassis fan power	J1		

Continued on next page . . .

**EVEREX SYSTEMS, INC.**  
**TEMPO VAV**

... continued from previous page

USER CONFIGURABLE SETTINGS		
Setting	Label	Position
í On board video enabled	J10	Pins 2 & 3 closed
On board video disabled	J10	Pins 1 & 2 closed
í Video IRQ9 disabled	J11	Open
Video IRQ9 enabled	J11	Closed
í Jumper information unavailable	JC7	N/A
í Jumper information unavailable	JP1	N/A

DRAM				
Size	Bank 0	Bank 1	Bank 2	Bank 3
1MB	(1) 256K x 36	None	None	None
2MB	(1) 256K x 36	(1) 256K x 36	None	None
3MB	(1) 256K x 36	(1) 256K x 36	(1) 256K x 36	None
4MB	(1) 256K x 36	(1) 256K x 36	(1) 256K x 36	(1) 256K x 36
4MB	(1) 1M x 36	None	None	None
5MB	(1) 1M x 36	(1) 256K x 36	None	None
6MB	(1) 1M x 36	(1) 256K x 36	(1) 256K x 36	None
7MB	(1) 1M x 36	(1) 256K x 36	(1) 256K x 36	(1) 256K x 36
8MB	(1) 1M x 36	(1) 1M x 36	None	None
12MB	(1) 1M x 36	(1) 1M x 36	(1) 1M x 36	None
16MB	(1) 1M x 36	(1) 1M x 36	(1) 1M x 36	(1) 1M x 36
16MB	(1) 4M x 36	None	None	None
17MB	(1) 4M x 36	(1) 256K x 36	None	None
18MB	(1) 4M x 36	(1) 256K x 36	(1) 256K x 36	None
19MB	(1) 4M x 36	(1) 256K x 36	(1) 256K x 36	(1) 256K x 36
20MB	(1) 4M x 36	(1) 1M x 36	None	None
21MB	(1) 4M x 36	(1) 1M x 36	(1) 256K x 36	None
22MB	(1) 4M x 36	(1) 1M x 36	(1) 256K x 36	(1) 256K x 36
24MB	(1) 4M x 36	(1) 1M x 36	(1) 1M x 36	None
28MB	(1) 4M x 36	(1) 1M x 36	(1) 1M x 36	(1) 1M x 36
32MB	(1) 4M x 36	(1) 4M x 36	None	None
33MB	(1) 4M x 36	(1) 4M x 36	(1) 256K x 36	None
34MB	(1) 4M x 36	(1) 4M x 36	(1) 256K x 36	(1) 256K x 36
36MB	(1) 4M x 36	(1) 4M x 36	(1) 1M x 36	None
40MB	(1) 4M x 36	(1) 4M x 36	(1) 1M x 36	(1) 1M x 36
48MB	(1) 4M x 36	(1) 4M x 36	(1) 4M x 36	None
64MB	(1) 4M x 36	(1) 4M x 36	(1) 4M x 36	(1) 4M x 36

CACHE SIZE		
Size	Bank 0	Bank 1
64KB	(4) 8K x 8	(4) 8K x 8
128KB	(4) 32K x 8	None
256KB	(4) 32K x 8	(4) 32K x 8

Continued on next page...

EVEREX SYSTEMS, INC.  
TEMPO VAV

... continued from previous page

CACHE JUMPER			
Size	JS1	JS2	JS3
64KB	Pins 2 & 3 closed	Pins 2 & 3 closed	Pins 2 & 3 closed
128KB	Pins 1 & 2 closed	Pins 2 & 3 closed	Pins 2 & 3 closed
256KB	Pins 1 & 2 closed	Pins 1 & 2 closed	Pins 1 & 2 closed

CPU TYPE			
Setting	JC1	JC2	JC3
80486SX	Pins 1 & 2 closed	Pins 1 & 2 closed	Pins 1 & 2 closed
80486DX	Pins 2 & 3 closed	Pins 2 & 3 closed	Pins 2 & 3 closed
486 Overdrive	Pins 2 & 3 closed	Pins 2 & 3 closed	Pins 1 & 2 closed
80486DX2	Pins 2 & 3 closed	Pins 2 & 3 closed	Pins 2 & 3 closed

CPU SPEED	
Setting	JK5
25MHz	Pins 3 & 4 closed
33MHz	Pins 1 & 2, 7 & 8 closed
50MHz	Pins 3 & 4 closed
66MHz	Pins 1 & 2, 7 & 8 closed

CPU CLOCK SPEED		
Setting	JK1	JK2
1x	Pins 1 & 2 closed	Pins 2 & 3 closed
2x	Pins 2 & 3 closed	Pins 1 & 2 closed

VIDEO MEMORY		
Size	Bank 0	Bank 1
1MB	(1) 256K x 16	(1) 256K x 16