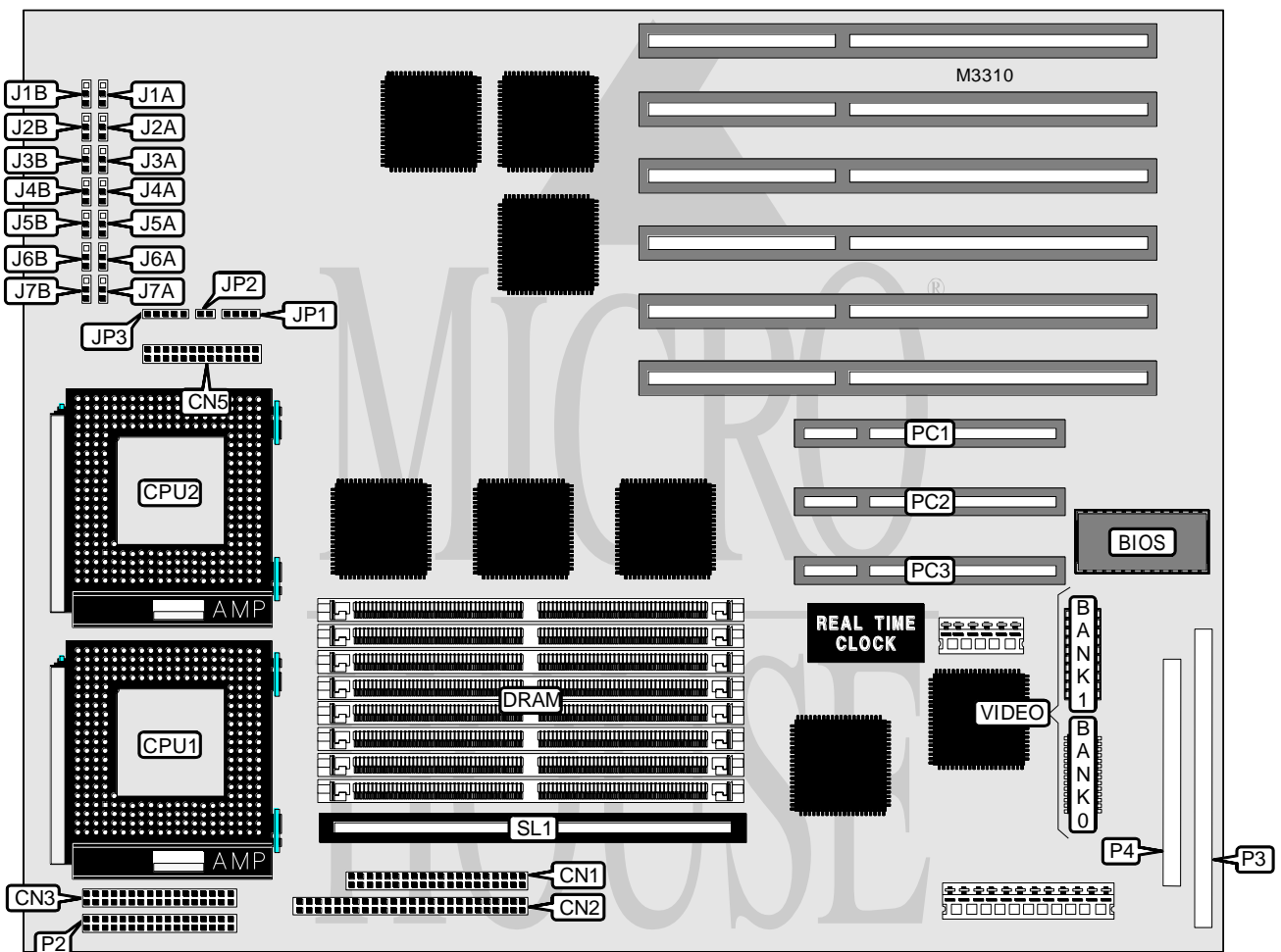


INTEL CORPORATION ALT SERVER / CS

Processor	Pentium
Processor Speed	75/90/100/120/133/166MHz
Chip Set	Intel
Maximum Onboard Memory	256MB
Cache	256/512KB
BIOS	AMI
Dimensions	330mm x 305mm
I/O Options	32-bit PCI slots (3), floppy drive interface, IDE interface, SCSI interfaces (2), parallel port, PS/2 mouse interface, serial ports (2), server monitor feature connector, VGA interface, cache slot
NPU Options	None



Continued on next page . . .

INTEL CORPORATION ALTSERVER/CS

... continued from previous page

CONNECTIONS			
Function	Label	Function	Label
IDE interface	CN1	Serial port 1	P3 pins 7 - 14
SCSI interface	CN2	Serial port 2	P3 pins 15 - 22
Floppy drive interface	CN3	Wide SCSI interface	P3 pins 23 - 40
Server monitor feature connector	CN5	VGA interface	P3 pins 41 - 52
Speaker	JP1	Parallel port	P3 pins 53 - 72
Reset switch	JP2	Wide SCSI interface	P3 pins 98 - 113
Front panel connector	JP3	SCSI terminator	P4
Front panel connector	P2	Cache slot	SL1
PS/2 mouse interface	P3 pins 1 - 3	32-bit PCI slots	PC1 - PC3
Keyboard	P3 pins 4- 6		
Note: The location of pin 1 on all connectors is unidentified.			

USER CONFIGURABLE SETTINGS		
Setting	Label	Position
í CMOS memory normal operation	J1B	Pins 1 & 2 closed
CMOS memory clear	J1B	Pins 2 & 3 closed
í Password normal operation	J2B	Pins 1 & 2 closed
Password clear	J2B	Pins 2 & 3 closed
í Primary CPU installed in socket 1	J3B	Pins 1 & 2 closed
Primary CPU installed in socket 2	J3B	Pins 2 & 3 closed
í Monitor type select color	J4A	Pins 1 & 2 closed
Monitor type select monochrome	J4A	Pins 2 & 3 closed
í Factory configured - do not alter (disable and ground)	J4B	Pins 1 & 2 closed
Factory configured - do not alter (enable kick start)	J4B	Pins 2 & 3 closed
í Flash BIOS boot block enabled	J5A	Pins 1 & 2 closed
Flash BIOS boot block disabled	J5A	Pins 2 & 3 closed
í Flash BIOS write protect disabled	J6A	Pins 1 & 2 closed
Flash BIOS write protect enabled	J6A	Pins 2 & 3 closed
í Flash BIOS normal boot	J7A	Pins 1 & 2 closed
Flash BIOS recovery mode	J7A	Pins 2 & 3 closed
í Factory configured - do not alter (option high)	J7B	Pins 1 & 2 closed
Factory configured - do not alter (option low)	J7B	Pins 2 & 3 closed

Continued on next page...

INTEL CORPORATION

ALT SERVER/CS

... continued from previous page

DRAM				
Size	Bank 0	Bank 1	Bank 2	Bank 3
8MB	(2) 1M x 36	None	None	None
16MB	(2) 2M x 36	None	None	None
16MB	(2) 1M x 36	(2) 1M x 36	None	None
24MB	(2) 2M x 36	(2) 1M x 36	None	None
24MB	(2) 1M x 36	(2) 1M x 36	(2) 1M x 36	None
24MB	(2) 1M x 36	(2) 2M x 36	None	None
32MB	(2) 4M x 36	None	None	None
32MB	(2) 2M x 36	(2) 1M x 36	(2) 1M x 36	None
32MB	(2) 2M x 36	(2) 2M x 36	None	None
32MB	(2) 1M x 36	(2) 1M x 36	(2) 1M x 36	(2) 1M x 36
40MB	(2) 4M x 36	(2) 1M x 36	None	None
40MB	(2) 2M x 36	(2) 1M x 36	(2) 1M x 36	(2) 1M x 36
40MB	(2) 1M x 36	(2) 2M x 36	(2) 2M x 36	None
40MB	(2) 1M x 36	(2) 4M x 36	None	None
48MB	(2) 4M x 36	(2) 1M x 36	(2) 1M x 36	None
48MB	(2) 4M x 36	(2) 2M x 36	None	None
48MB	(2) 2M x 36	(2) 2M x 36	(2) 2M x 36	None
48MB	(2) 2M x 36	(2) 4M x 36	None	None
56MB	(2) 4M x 36	(2) 1M x 36	(2) 1M x 36	(2) 1M x 36
56MB	(2) 1M x 36	(2) 2M x 36	(2) 2M x 36	(2) 2M x 36
64MB	(2) 8M x 36	None	None	None
64MB	(2) 4M x 36	(2) 2M x 36	(2) 2M x 36	None
64MB	(2) 4M x 36	(2) 4M x 36	None	None
64MB	(2) 2M x 36	(2) 2M x 36	(2) 2M x 36	(2) 2M x 36
72MB	(2) 8M x 36	(2) 1M x 36	None	None
72MB	(2) 1M x 36	(2) 4M x 36	(2) 4M x 36	None
72MB	(2) 1M x 36	(2) 8M x 36	None	None
80MB	(2) 8M x 36	(2) 1M x 36	(2) 1M x 36	None
80MB	(2) 8M x 36	(2) 2M x 36	None	None
80MB	(2) 4M x 36	(2) 2M x 36	(2) 2M x 36	(2) 2M x 36
80MB	(2) 2M x 36	(2) 4M x 36	(2) 4M x 36	None
80MB	(2) 2M x 36	(2) 8M x 36	None	None
88MB	(2) 8M x 36	(2) 1M x 36	(2) 1M x 36	(2) 1M x 36
96MB	(2) 8M x 36	(2) 2M x 36	(2) 2M x 36	None
96MB	(2) 8M x 36	(2) 4M x 36	None	None
96MB	(2) 4M x 36	(2) 4M x 36	(2) 4M x 36	None
96MB	(2) 4M x 36	(2) 8M x 36	None	None
104MB	(2) 1M x 36	(2) 4M x 36	(2) 4M x 36	(2) 4M x 36
112MB	(2) 8M x 36	(2) 2M x 36	(2) 2M x 36	(2) 2M x 36
112MB	(2) 2M x 36	(2) 4M x 36	(2) 4M x 36	(2) 4M x 36
128MB	(2) 8M x 36	(2) 4M x 36	(2) 4M x 36	None
128MB	(2) 8M x 36	(2) 8M x 36	None	None

Continued on next page...

INTEL CORPORATION ALT SERVER/CS

... continued from previous page

DRAM (CON'T)				
Size	Bank 0	Bank 1	Bank 2	Bank 3
128MB	(2) 4M x 36	(2) 4M x 36	(2) 4M x 36	(2) 4M x 36
136MB	(2) 1M x 36	(2) 8M x 36	(2) 8M x 36	None
144MB	(2) 2M x 36	(2) 8M x 36	(2) 8M x 36	None
160MB	(2) 8M x 36	(2) 4M x 36	(2) 4M x 36	(2) 4M x 36
160MB	(2) 4M x 36	(2) 8M x 36	(2) 8M x 36	None
192MB	(2) 8M x 36	(2) 8M x 36	(2) 8M x 36	None
200MB	(2) 1M x 36	(2) 8M x 36	(2) 8M x 36	(2) 8M x 36
208MB	(2) 2M x 36	(2) 8M x 36	(2) 8M x 36	(2) 8M x 36
224MB	(2) 4M x 36	(2) 8M x 36	(2) 8M x 36	(2) 8M x 36
256MB	(2) 8M x 36	(2) 8M x 36	(2) 8M x 36	(2) 8M x 36

Note: The orientation of the banks is unidentified.

CACHE SIZE	
Size	SL1
256KB	Installed
512KB	Installed

Note: Cache can either be asynchronous or burst synchronous.

CPU SPEED				
Setting	J1A	J2A	J5B	J6B
75MHz	Pins 1 & 2 closed	Pins 1 & 2 closed	Pins 1 & 2 closed	Pins 2 & 3 closed
90MHz	Pins 1 & 2 closed	Pins 1 & 2 closed	Pins 1 & 2 closed	Pins 1 & 2 closed
100MHz	Pins 1 & 2 closed	Pins 1 & 2 closed	Pins 2 & 3 closed	Pins 2 & 3 closed
120MHz	Pins 1 & 2 closed	Pins 2 & 3 closed	Pins 1 & 2 closed	Pins 1 & 2 closed
133MHz	Pins 1 & 2 closed	Pins 2 & 3 closed	Pins 2 & 3 closed	Pins 2 & 3 closed
166MHz	Pins 2 & 3 closed	Pins 2 & 3 closed	Pins 2 & 3 closed	Pins 2 & 3 closed

CPU VOLTAGE	
Setting	J3A
STD/VRE CPU installed	Pins 1 & 2 closed
N/A	Pins 2 & 3 closed

VIDEO MEMORY		
Size	Bank 0	Bank 1
512KB	(1) 256K x 16	None
1MB	(1) 256K x 16	(1) 256K x 16