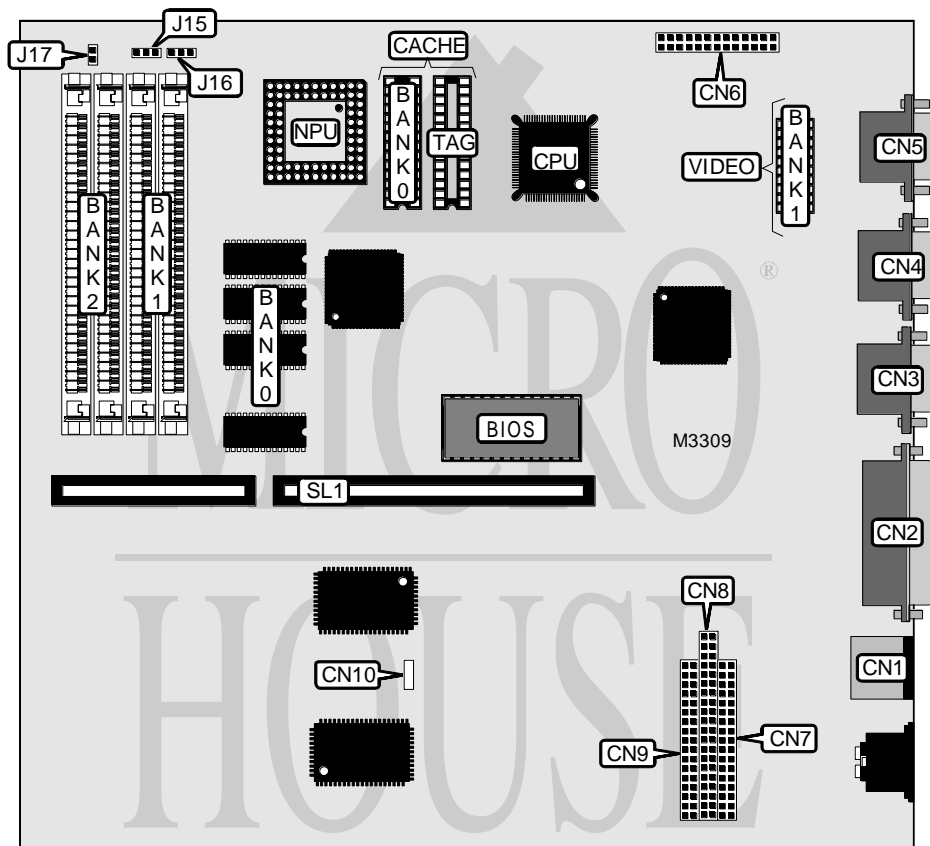


OLIVETTI M4-34 (BA2012)

Processor	AM386SX
Processor Speed	40MHz
Chip Set	Unidentified
Maximum Onboard Memory	16MB
Cache	16KB
BIOS	Unidentified
Dimensions	254mm x 218mm
I/O Options	Floppy drive interface, IDE interface, parallel port, PS/2 mouse port, serial ports (2), VGA feature connector, VGA port, riser slot, CD-ROM interface, CD-ROM connector
NPU Options	80387SX



CONNECTIONS			
Function	Label	Function	Label
PS/2 mouse port	CN1	CD-ROM connector	CN7
Parallel port	CN2	IDE interface	CN8
Serial port 1	CN3	Floppy drive interface	CN9
Serial port 2	CN4	CD-ROM interface	CN10
VGA port	CN5	Riser slot	SL1
VGA feature connector	CN6		

Continued on next page...

OLIVETTI

M4-34 (BA2012)

... continued from previous page

USER CONFIGURABLE SETTINGS		
Setting	Label	Position
Floppy drive write enabled	J15	Pins 2 & 3 closed
Floppy drive write disabled	J15	Pins 1 & 2 closed
Bootstrap from serial port enabled	J16	Pins 2 & 3 closed
Bootstrap from serial port disabled	J16	Pins 1 & 2 closed
Setup access enabled	J17	Closed
Setup access disabled	J17	Open

DRAM			
Size	Bank 0	Bank 1	Bank 2
2MB	2MB	None	None
4MB	2MB	(2) 1M x 9	None
6MB	2MB	(2) 1M x 9	(2) 1M x 9
10MB	2MB	(2) 4M x 9	None
10MB	2MB	(2) 4M x 9	None
12MB	2MB	(2) 4M x 9	(2) 1M x 9
12MB	2MB	(2) 1M x 9	(2) 4M x 9
16MB	2MB	(2) 4M x 9	(2) 4M x 9

Note: Bank 0 is factory installed and is not configurable. If 16MB is installed, the on board memory is disabled.

CACHE TYPE		
Size	Bank 0	TAG
16KB	(1) 64K x 1	(1) 64K x 1

VIDEO MEMORY		
Size	Bank 0	Bank 1
512KB	512KB	None
1MB	512KB	(1) 256K x 16

Note: Bank 0 is factory installed and is not configurable. The location is unidentified.

MISCELLANEOUS TECHNICAL NOTE
The location of pin 1 is unidentified on all jumpers and connectors.