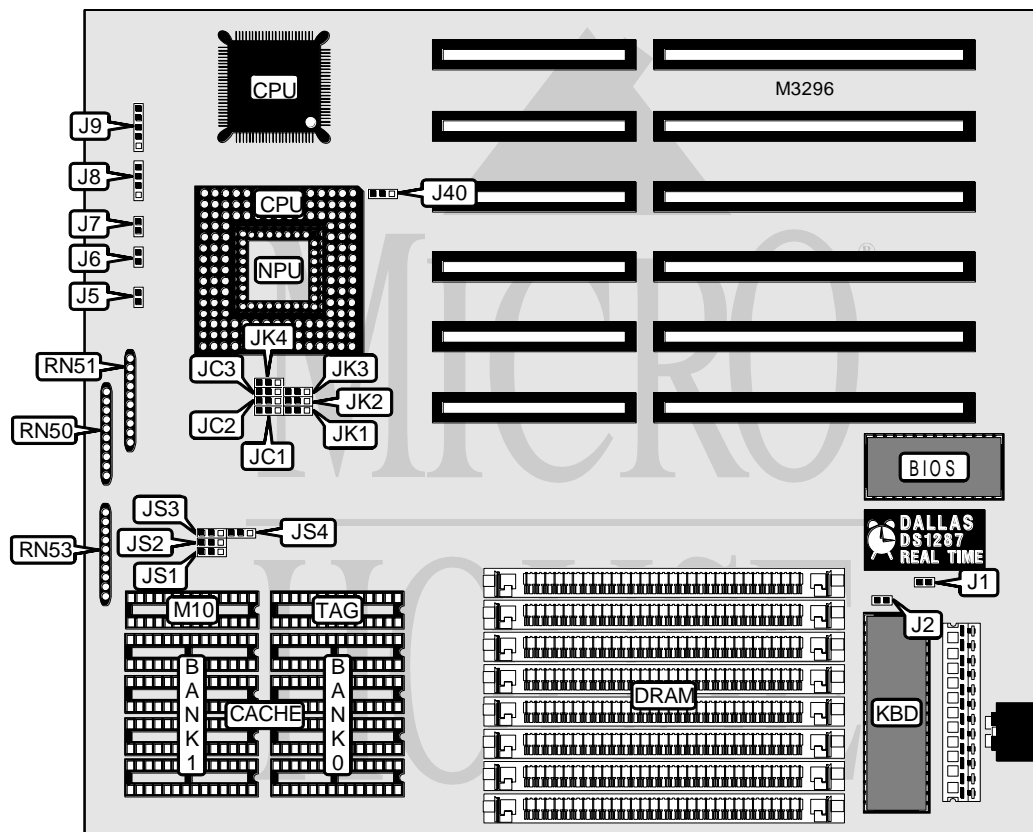


OLIVETTI

PCS 30/PCS 40 (4386-VC-HD)

Processor	80386SX/80386DX/80486SX/80487SX/80486DX/80486DX2
Processor Speed	20/25/33/40/50(internal)/50/66(internal)MHz
Chip Set	VIA
Max. Onboard DRAM	128MB
Cache	64/128/256KB
BIOS	AMI/Harward
Dimensions	254mm x 218mm
I/O Options	None
NPU Options	80387DX



LOCATION UNIDENTIFIED

CONNECTIONS			
Function	Label	Function	Label
Turbo LED	J5	Speaker	J8
Turbo switch	J6	Power LED & keylock	J9
Reset switch	J7		

Continued on next page. . .

OLIVETTI

PCS30/PCS40 (4386-VC-HD)

... continued from previous page

USER CONFIGURABLE SETTINGS		
Function	Label	Position
í CMOS memory normal operation	J1	Open
CMOS memory clear	J1	Closed
í Monitor type select monochrome/EGA/VGA	J2	Open
Monitor type select color	J2	Closed
í NPU synchronous with CPU	J40	pins 1 & 2 closed
NPU asynchronous with CPU	J40	pins 2 & 3 closed

DRAM		
Size	Bank 0	Bank 1
4MB	(4) 1M x 9	None
8MB	(4) 1M x 9	(4) 1M x 9
16MB	(4) 4M x 9	None
20MB	(4) 1M x 9	(4) 4M x 9
32MB	(4) 4M x 9	(4) 4M x 9
Note: The orientation of the banks is unidentified.		

CACHE SIZE				
Size	Bank 0	Bank 1	M10	TAG
64KB	(4) 8K x 8	(4) 8K x 8	(1) 8K x 8	(1) 8K x 8
128KB	(4) 32K x 8	NONE	(1) 8K x 8	(1) 8K x 8
256KB	(4) 32K x 8	(4) 32K x 8	(1) 32K x 8	(1) 32K x 8
Note: M10 is optional and does not have to be installed.				

CACHE JUMPER				
Size	JS1	JS2	JS3	JS4
64KB	pins 1 & 2 closed	pins 1 & 2 closed	pins 1 & 2 closed	pins 1 & 2 closed
128KB	pins 1 & 2 closed	pins 2 & 3 closed	pins 2 & 3 closed	pins 2 & 3 closed
256KB	pins 2 & 3 closed	pins 2 & 3 closed	pins 1 & 2 closed	pins 1 & 2 closed

CPU SPEED/TYPE			
Setting	JC1	JC2	JC3
80386SX-33	pins 1 & 2 closed	pins 1 & 2 closed	pins 1 & 2 closed
80386DX-40	pins 1 & 2 closed	pins 1 & 2 closed	pins 1 & 2 closed
80486SX-20	pins 2 & 3 closed	pins 2 & 3 closed	Open
80486SX-25	pins 2 & 3 closed	pins 2 & 3 closed	Open
80486SX-33	pins 2 & 3 closed	pins 2 & 3 closed	Open
80487SX-20	pins 1 & 2 closed	pins 1 & 2 closed	pins 2 & 3 closed
80487SX-25	pins 1 & 2 closed	pins 1 & 2 closed	pins 2 & 3 closed
80486DX-20	pins 1 & 2 closed	pins 1 & 2 closed	pins 1 & 2 closed
80486DX-25	pins 1 & 2 closed	pins 1 & 2 closed	pins 1 & 2 closed
80486DX-33	pins 1 & 2 closed	pins 1 & 2 closed	pins 1 & 2 closed
80486DX-50	pins 1 & 2 closed	pins 1 & 2 closed	pins 1 & 2 closed
80486DX2-50	pins 1 & 2 closed	pins 1 & 2 closed	pins 1 & 2 closed
80486DX2-66	pins 1 & 2 closed	pins 1 & 2 closed	pins 1 & 2 closed

Continued on next page. ...

OLIVETTI

PCS30/PCS40 (4386-VC-HD)

... continued from previous page

CPU SPEED/TYPE (CON'T)				
Setting	JK1	JK2	JK3	JK4
80386SX-33	pins 1 & 2 closed	pins 1 & 2 closed	pins 1 & 2 closed	pins 2 & 3 closed
80386DX-40	pins 1 & 2 closed	pins 1 & 2 closed	pins 1 & 2 closed	pins 2 & 3 closed
80486SX-20	pins 1 & 2 closed	pins 1 & 2 closed	pins 2 & 3 closed	pins 1 & 2 closed
80486SX-25	pins 1 & 2 closed	pins 1 & 2 closed	pins 2 & 3 closed	pins 1 & 2 closed
80486SX-33	pins 2 & 3 closed	pins 2 & 3 closed	pins 2 & 3 closed	pins 1 & 2 closed
80487SX-20	pins 1 & 2 closed	pins 1 & 2 closed	pins 2 & 3 closed	pins 1 & 2 closed
80487SX-25	pins 1 & 2 closed	pins 1 & 2 closed	pins 2 & 3 closed	pins 1 & 2 closed
80486DX-20	pins 1 & 2 closed	pins 1 & 2 closed	pins 2 & 3 closed	pins 1 & 2 closed
80486DX-25	pins 1 & 2 closed	pins 1 & 2 closed	pins 2 & 3 closed	pins 1 & 2 closed
80486DX-33	pins 2 & 3 closed	pins 2 & 3 closed	pins 2 & 3 closed	pins 1 & 2 closed
80486DX-50	pins 2 & 3 closed	pins 2 & 3 closed	pins 2 & 3 closed	pins 1 & 2 closed
80486DX2-50	pins 1 & 2 closed	pins 1 & 2 closed	pins 2 & 3 closed	pins 1 & 2 closed
80486DX2-66	pins 2 & 3 closed	pins 2 & 3 closed	pins 2 & 3 closed	pins 1 & 2 closed

CPU SPEED/TYPE (CON'T)				
Setting	RN10	RN50	RN51	RN53
80386SX-33	Not installed	Installed	Not installed	Installed
80386DX-40	Not installed	Installed	Not installed	Installed
80486SX-20	Installed	Not installed	Installed	Not installed
80486SX-25	Installed	Not installed	Installed	Not installed
80486SX-33	Installed	Not installed	Installed	Not installed
80487SX-20	Installed	Not installed	Installed	Not installed
80487SX-25	Installed	Not installed	Installed	Not installed
80486DX-20	Installed	Not installed	Installed	Not installed
80486DX-25	Installed	Not installed	Installed	Not installed
80486DX-33	Installed	Not installed	Installed	Not installed
80486DX-50	Installed	Not installed	Installed	Not installed
80486DX2-50	Installed	Not installed	Installed	Not installed
80486DX2-66	Installed	Not installed	Installed	Not installed