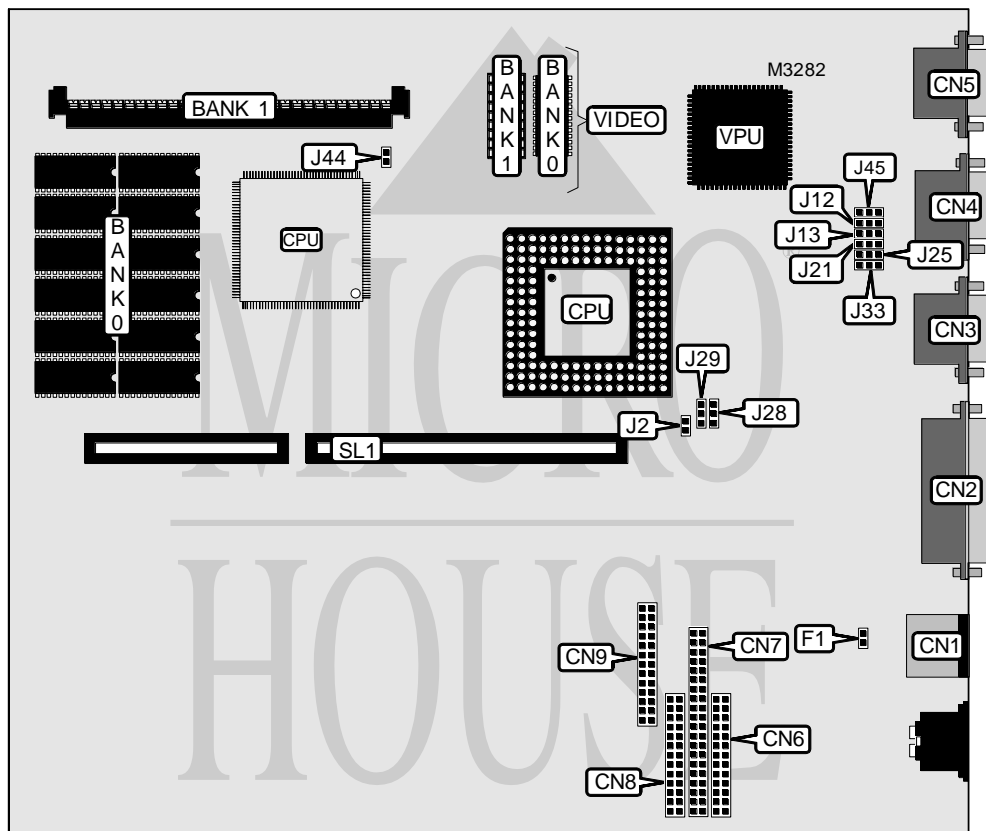


## OLIVETTI

## M4 - 4X / M4 - 6X / PCS4XX (BA204X)

<b>Processor</b>	80486SX/80487SX/80486DX/80486DX2
<b>Processor Speed</b>	25/33/50(internal)/66(internal)MHz
<b>Chip Set</b>	Unidentified
<b>Maximum Onboard Memory</b>	36MB
<b>Cache</b>	None
<b>BIOS</b>	Unidentified
<b>Dimensions</b>	254mm x 218mm
<b>I/O Options</b>	Floppy drive interfaces (2), IDE interface, parallel port, PS/2 mouse port, serial ports (2), VGA port, riser slot, CD-ROM connector
<b>NPU Options</b>	None



CONNECTIONS			
Function	Label	Function	Label
PS/2 mouse port	CN1	CD -ROM connector	CN6
Parallel port	CN2	IDE interface	CN7
Serial port 2	CN3	Floppy drive interface	CN8
Serial port 1	CN4	Floppy drive interface	CN9
VGA port	CN5	Riser slot	SL1

*Continued on next page . . .*

## OLIVETTI

## M4-4X/M4-6X/PCS4XX (BA204X)

... continued from previous page

USER CONFIGURABLE SETTINGS		
Setting	Label	Position
í Factory configured - do not alter	F1	N/A
Hard drives installed 1	J2	Closed
Hard drives installed 2	J2	Open
í Setup access disabled	J12	Pins 2 & 3 closed
Setup access enabled	J12	Pins 1 & 2 closed
í Mouse IRQ12 enabled	J13	Pins 2 & 3 closed
Mouse IRQ12 disabled	J13	Pins 1 & 2 closed
í Serial port 1 bootstrap enabled	J21	Pins 2 & 3 closed
Serial port 1 bootstrap disabled	J21	Pins 1 & 2 closed
í Serial port 2 bootstrap enabled	J25	Pins 2 & 3 closed
Serial port 2 bootstrap disabled	J25	Pins 1 & 2 closed
í Floppy drives not write protected	J33	Pins 2 & 3 closed
Floppy drives write protected	J33	Pins 1 & 2 closed
í Factory configured - do not alter	J45	N/A

DRAM		
Size	Bank 0	Bank 1
4MB	4MB	None
8MB	4MB	(1) 1M x 36
12MB	4MB	(1) 2M x 36
20MB	4MB	(1) 4M x 36
36MB	4MB	(1) 8M x 36

Note: Bank 0 is factory configured and is not configurable.

CPU TYPE		
Setting	J28	J29
80486SX (PQFP)	Pins 1 & 2 closed	Pins 1 & 2 closed
80486SX (PQFP)/80487SX	Pins 1 & 2 closed	Pins 1 & 2 closed
80486SX (PQFP)/80486DX2	Pins 1 & 2 closed	Pins 1 & 2 closed
80486SX (PGA)	Pins 2 & 3 closed	Pins 1 & 2 closed
80487SX	Pins 1 & 2 closed	Pins 1 & 2 closed
80486DX	Pins 1 & 2 closed	Pins 2 & 3 closed
80486DX2	Pins 1 & 2 closed	Pins 2 & 3 closed

CPU SPEED	
Setting	J44
25MHz	Closed
33MHz	Open
50iMHz	Closed
66iMHz	Open

Continued on next page...

**OLIVETTI****M4-4X/M4-6X/PCS4XX (BA204X)***... continued from previous page*

<b>VIDEO MEMORY</b>		
<b>Size</b>	<b>Bank 0</b>	<b>Bank 1</b>
512KB	512KB	None
1MB	512KB	512KB

Note: Bank 0 is factory installed and is not configurable. The chip sizes are unidentified.

<b>MISCELLANEOUS TECHNICAL NOTE</b>
The location of pin 1 is unidentified.