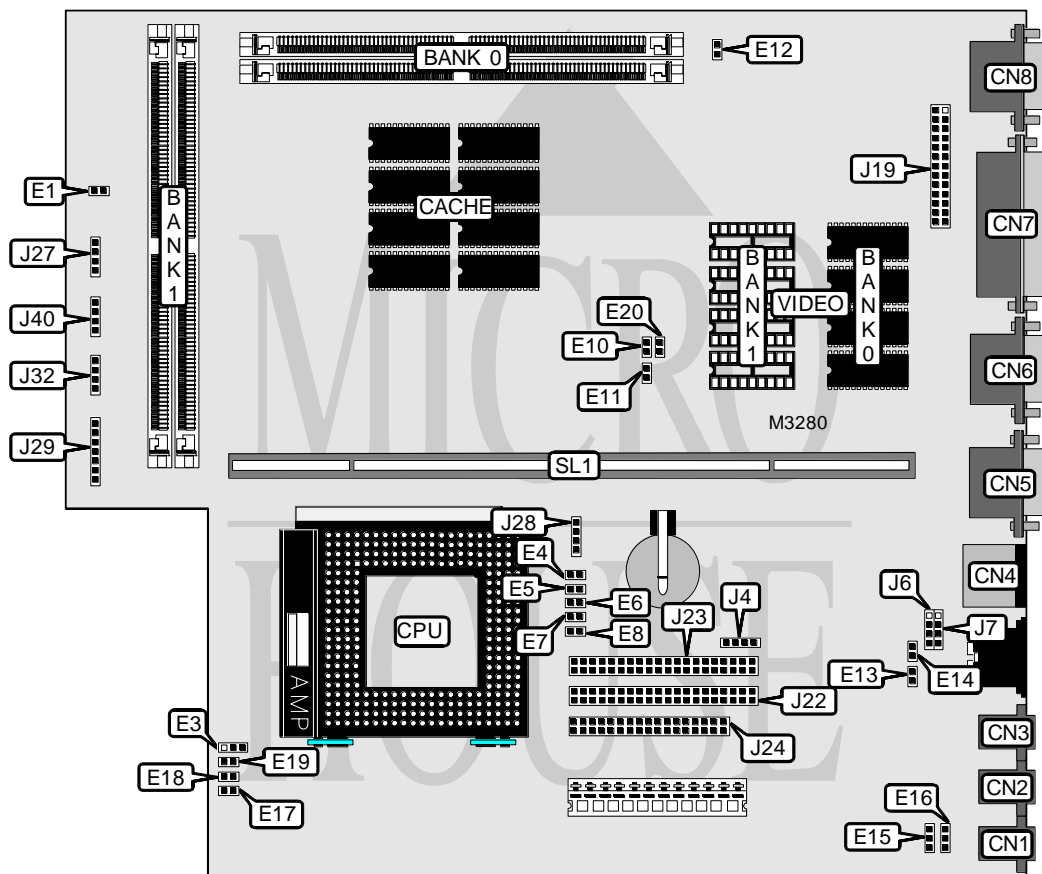


AST RESEARCH, INC.

BRAVO MS P75 (202759-111, 202762-15X)

Processor	CX M1/Pentium
Processor Speed	60/75/80/90/100/120/133/150/166MHz
Chip Set	Unidentified
Maximum Onboard Memory	128MB
Cache	256KB
BIOS	AST
Dimensions	330mm x 218mm
I/O Options	Floppy drive interface, IDE interfaces (2), parallel port, PS/2 mouse port, serial ports (2), 8514 video pass through connector, VGA port, riser slot, speaker/line out connector, microphone connector, line in connector, CD-ROM audio connector
NPU Options	None



Continued on next page . . .

AST RESEARCH, INC.

BRAVO MS P75 (202759-111, 202762-15X)

... continued from previous page

CONNECTIONS			
Function	Label	Function	Label
Speaker/line out connector	CN1	IDE interface 1	J22
Microphone connector	CN2	IDE interface 2	J23
Line in connector	CN3	Floppy drive interface	J24
PS/2 mouse port	CN4	Speaker	J27
Serial port	CN5	Chassis fan power	J28
Serial port	CN6	Front panel LED's	J29
Parallel port	CN7	Chassis fan power	J32
VGA port	CN8	IDE interface LED	J40
CD audio connector	J4	Riser slot	SL1
8514 video pass through connector	J19		

USER CONFIGURABLE SETTINGS		
Setting	Label	Position
í Speaker type select on board	E1	Closed
Speaker type select external	E1	Open
í Flash BIOS normal operation	E4	Closed
Flash BIOS force update at boot	E4	Open
í Password enabled	E5	Closed
Password disabled	E5	Open
í Setup access enabled	E7	Closed
Setup access disabled	E7	Open
í Factory configured - do not alter	E12	Open
í Factory configured - do not alter	E13	Closed
í Factory configured - do not alter	E14	Open
í Factory configured - do not alter	E17	Open
í Factory configured - do not alter	E19	Open
í Factory configured - do not alter	J6	Pins 2 & 4 closed
í Factory configured - do not alter	J7	Pins 2 & 4 closed

DRAM		
Size	Bank 0	Bank 1
8MB	(2) 1M x 32	None
10MB	(2) 1M x 32	(2) 256K x 32
16MB	(2) 2M x 32	None
16MB	(2) 1M x 32	(2) 1M x 32
24MB	(2) 2M x 32	(2) 1M x 32
32MB	(2) 4M x 32	None
32MB	(2) 2M x 32	(2) 2M x 32
34MB	(2) 4M x 32	(2) 256K x 32
40MB	(2) 4M x 32	(2) 1M x 32
48MB	(2) 4M x 32	(2) 2M x 32
64MB	(2) 8M x 32	None
64MB	(2) 4M x 32	(2) 4M x 32

Continued on next page...

AST RESEARCH, INC.

BRAVO MS P75 (202759-111, 202762-15X)

... continued from previous page

DRAM (CON'T)		
Size	Bank 0	Bank 1
66MB	(2) 8M x 32	(2) 256K x 32
72MB	(2) 8M x 32	(2) 1M x 32
80MB	(2) 8M x 32	(2) 2M x 32
96MB	(2) 8M x 32	(2) 4M x 32
128MB	(2) 8M x 32	(2) 8M x 32

CACHE SIZE
Note: 256KB cache is factory installed and is not configurable.

CPU SPEED								
Internal	External	E3	E6	E8	E10	E11	E18	E20
60MHz	40MHz	2 & 3	Closed	Closed	Open	Closed	Open	Open
75MHz	50MHz	2 & 3	Closed	Closed	Open	Open	Open	Closed
80MHz	40MHz	1 & 2	Open	Closed	Open	Closed	Closed	Open
90MHz	60MHz	2 & 3	Closed	Closed	Closed	Open	Closed	Closed
100MHz (Intel)	66MHz	1 & 2	Open	Closed	Open	Open	Closed	Closed
100MHz (Cyrix)	50MHz	2 & 3	Closed	Closed	Closed	Closed	Closed	Closed
120MHz	60MHz	1 & 2	Open	Closed	Closed	Open	Closed	Closed
133MHz	66MHz	1 & 2	Open	Closed	Closed	Closed	Closed	Closed
150MHz	60MHz	1 & 2	Closed	Open	Closed	Open	Closed	Closed
166MHz	66MHz	1 & 2	Closed	Open	Closed	Closed	Closed	Closed

Note: Pins designated should be in the closed position.

CPU VOLTAGE	
Setting	E2
3.3v - 3.4v	Closed
3.4v - 3.6v	Open

Note: E2 may not be present on all boards.

VIDEO MEMORY		
Size	Bank 0	Bank 1
1MB	(4) 256K x 8	None
2MB	(4) 256K x 8	(4) 256K x 8

Note: Bank 0 is factory installed and is not configurable.

SPEAKER/LINE OUT		
Setting	E15	E16
í Output to speaker	Pins 1 & 2 closed	Pins 1 & 2 closed
Output to line	Pins 2 & 3 closed	Pins 2 & 3 closed